

3225

ASH STREET

PALO ALTO, CALIFORNIA



OFFICE SPACE FOR LEASE

NEWMARK

CARTER LYMAN

650.688.8559

carter.lyman@nrmk.com

CA RE License #02067725

CHRISTIAN PRELLE

650.688.8504

christian.prelle@nrmk.com

CA RE License #01888351

PROJECT HIGHLIGHTS

✓ ±4,700 Usable SF

🖥️ Plug and Play

👤 Perfect for Professional Service User or Creative Technology Users

🍷 Private Outdoor Patio w/BBQ - Perfect for Meetings, All Hands, and Company Events

🚶 Walkable Location!
5 mins to California Avenue Caltrain & Amenities

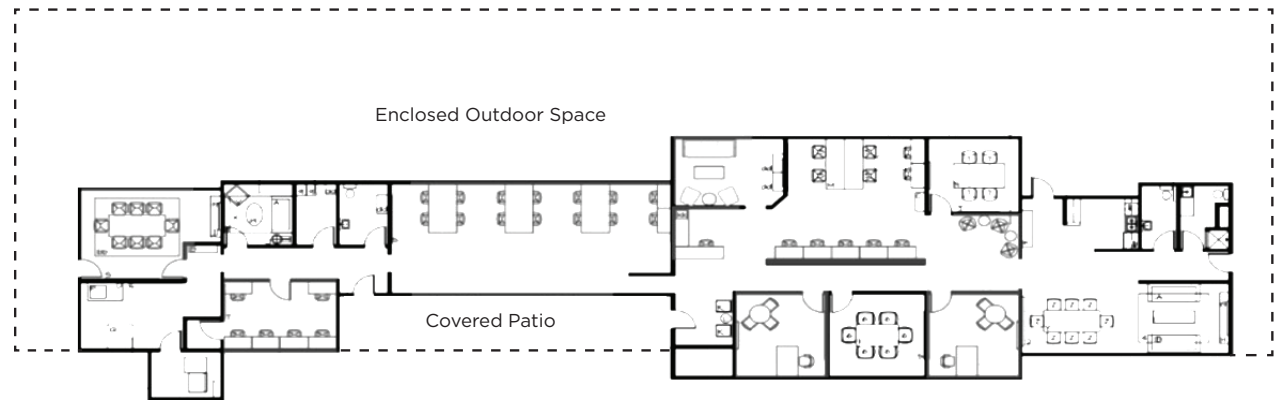
P Dedicated Parking

📅 Available Now

✉️ Please Contact Agents to Tour

3225
ASH STREET
PALO ALTO, CALIFORNIA

FLOOR PLAN



3 Large Conference Rooms

2 Kitchenettes

5 Small Conference Rooms/Private Offices

3 Bathrooms



AMENITIES MAP

RESTAURANTS

1. Caffe Riace
2. La Bodeguita Del Medio
3. Pastis
4. Mediterranean Wraps
5. The Counter
6. Italico Pizzeria Restaurant
7. Jin Sho
8. Terun
9. Palo Alto Sol
10. Spice Kit
11. Anatolian Kitchen
12. Baume
13. Palo Alto Pizza Co
14. Peking Duck
15. Bistro Elan on Birch St.
16. Chipotle
17. Odori Sushi
18. Cardinal Sushi
19. Vitality Bowls
20. Pizza Studio
21. CALAVE Wine Bar
22. Cafe Pro Bono
23. Cafe Brioche
24. The Fish Market

COFFEE SHOPS/MARKETS

1. Starbucks
2. Mollie Stone's Markets
3. Country Sun
4. Printers Cafe
5. Izzy's Brooklyn Bagels
6. Beet Cafe
7. Fambrini's Cafe
8. Starbucks
9. Zombie Runner

SHOPPING & SERVICES

1. Maximart Pharmacy
2. T-Mobile
3. Avalon Yoga
4. Village Flower Shop
5. AT&T
6. Mike's Bikes
7. Fry's Electronics
8. GreenEarth Cleaning
11. Performance Gaines
12. Pure Barre
13. Xfinity
14. CineArts
15. Verizon Wireless

BANKS

1. Bank of the West
2. Wells Fargo
3. First Republic Bank
4. Bank of America
5. Silicon Valley Bank
- First Technology Credit Union
6. Citibank
7. Technology Credit Union
8. Provident Credit Union



CARTER LYMAN

650.688.8559

carter.lyman@nmrk.com

CA RE License #02067725

CHRISTIAN PRELLE

650.688.8504

christian.prelle@nmrk.com

CA RE License #01888351

The distributor of this communication is performing acts for which a real estate license is required. The information contained herein has been obtained from sources deemed reliable but has not been verified and no guarantee, warranty or representation, either express or implied, is made with respect to such information. Terms of sale or lease and availability are subject to change or withdrawal without notice. 22-0449.05/22