



**1315 Industrial Park Drive, Smithfield, NC 27577**

# Warehouse Space Available **For Lease**

**±120,000 SF - ±210,000 SF in Smithfield Business Park**

**Larry L. Lakins II, SIOR**

Executive Vice President  
+1 919 815 5327  
larry.lakins@colliers.com

**Don Moss, SIOR | CCIM**

Executive Vice President  
+1 704 409 2372  
don.moss@colliers.com

**Colliers**



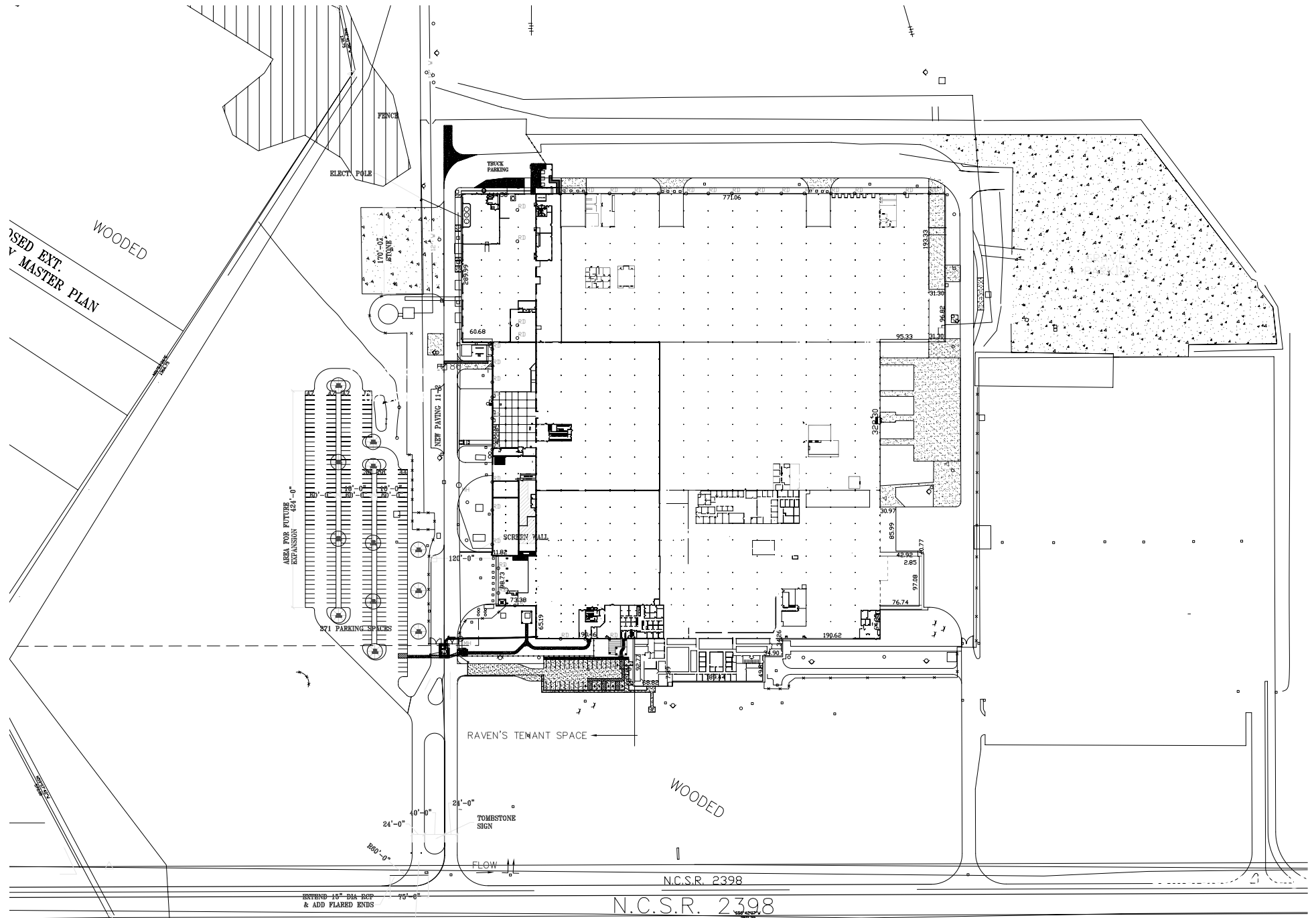
# Property Overview

Address	1315 Industrial Park Drive Smithfield, NC 27577
Timing	Available now
Zoning	IND
Year Built	1966 / 1994
Building Size	730,881
Lot Size	127.84 Acres
Available	±120,000 SF - ±210,000 SF
Office Space	±15,000 SF, additional available
Ceiling Height	20' - 24'
Column Spacing	32' x 48'
Truck Court Size	120' Plus
Loading	13 ext docks
	1 ramp
Power	3 phase
Sprinklers	ESFR
Rail to Site	Available (CSX)
Heavy Power	15 MW
Outside Storage	Available
Current use	In Place Heavy "Metal" Stamping Operation (Full spec sheet available upon request)
	Existing equipment for Sale. List available upon request



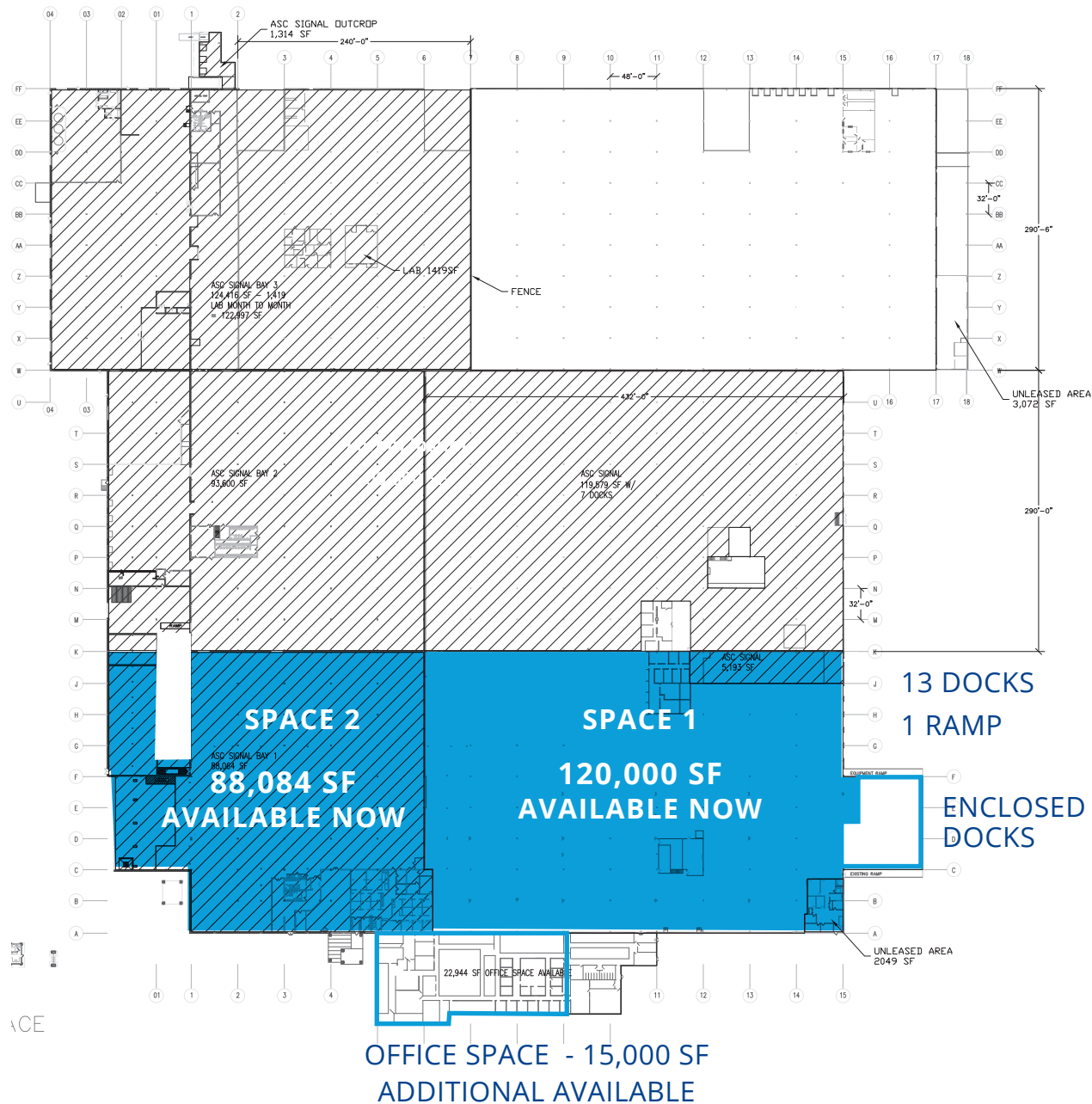


# Site Plan





# Floorplan

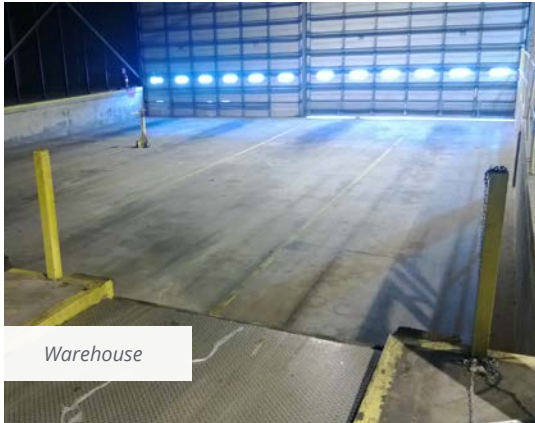


## Highlights

- ±120,000 - 210,000 SF warehouse available
- Located off I-95 where it intersects with US Hwy 70
- ±5,000 SF of office space, additional available

**±120,000 -  
210,000**  
square feet  
available now





Warehouse



Interior view of dock doors



Exterior entrance



Main entrance



Aerial view of property



Exterior view



# Property Location



## Airports

**Raleigh-Durham International**  
48.4 miles | 50 minutes

**Piedmont Triad International**  
124 miles | 1 hour 57 minutes

**Charlotte Douglas International**  
204 miles | 3 hours 6 minutes



## Ports

**Norfolk, VA**  
176 miles | 2 hours 47 minutes

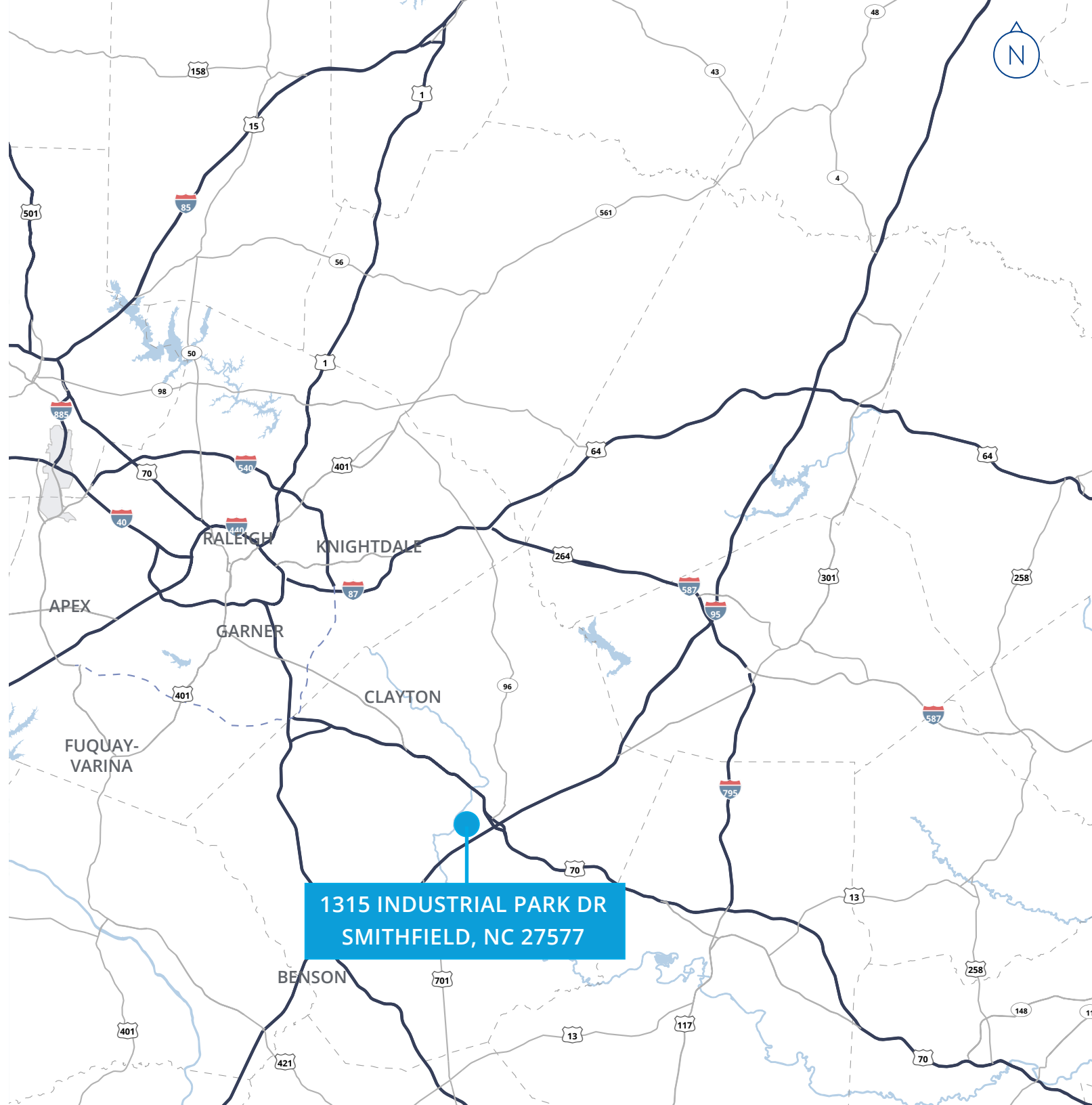
**Morehead City, NC**  
119 miles | 2 hours 12 minutes

**Wilmington, NC**  
105 miles | 1 hours 40 minutes

**Charleston, SC**  
263 miles | 4 hours 2 minutes

**Savannah, GA**  
306 miles | 4 hours 34 minutes

**Jacksonville, FL**  
438 miles | 6 hours 19 minutes



**1315 INDUSTRIAL PARK DR  
SMITHFIELD, NC 27577**





4208 Six Forks Road, Suite 800, Raleigh, NC 27609

**Larry L. Lakins II, SIOR**

Executive Vice President  
+1 919 815 5327  
larry.lakins@colliers.com

**Don Moss, SIOR | CCIM**

Executive Vice President  
+1 704 409 2372  
don.moss@colliers.com

This document has been prepared by Colliers for advertising and general information only. Colliers makes no guarantees, representations or warranties of any kind, expressed or implied, regarding the information including, but not limited to, warranties of content, accuracy and reliability. Any interested party should undertake their own inquiries as to the accuracy of the information. Colliers excludes unequivocally all inferred or implied terms, conditions and warranties arising out of this document and excludes all liability for loss and damages arising there from. This publication is the copyrighted property of Colliers and/or its licensor(s). Copyright © 2024. All rights reserved.

[colliers.com/raleigh](https://colliers.com/raleigh)