



Office For Lease



1996 E. 6400 S.
Murray, Utah 84121



Available

Suite 200
6,623 SF

Highly Competitive Lease Rate

\$23.00/SF
Full Service
TI Allowance is available



- 2-story office building
- Upscale 2-story lobby
- Furniture available
- Modern, contemporary design & flow
- Parking ratio: 4/1,000
- Spectacular Wasatch Front views

Contact:

Andrew Whitworth

Associate
+1 801 580 3895
andrew.whitworth@colliers.com

Gwen Knight

Executive Vice President
+1 314 422 0467
gwen.knight@colliers.com

Jared Booth, SIOR, CCIM

Executive Vice President
+1 801 573 5959
jared.booth@colliers.com

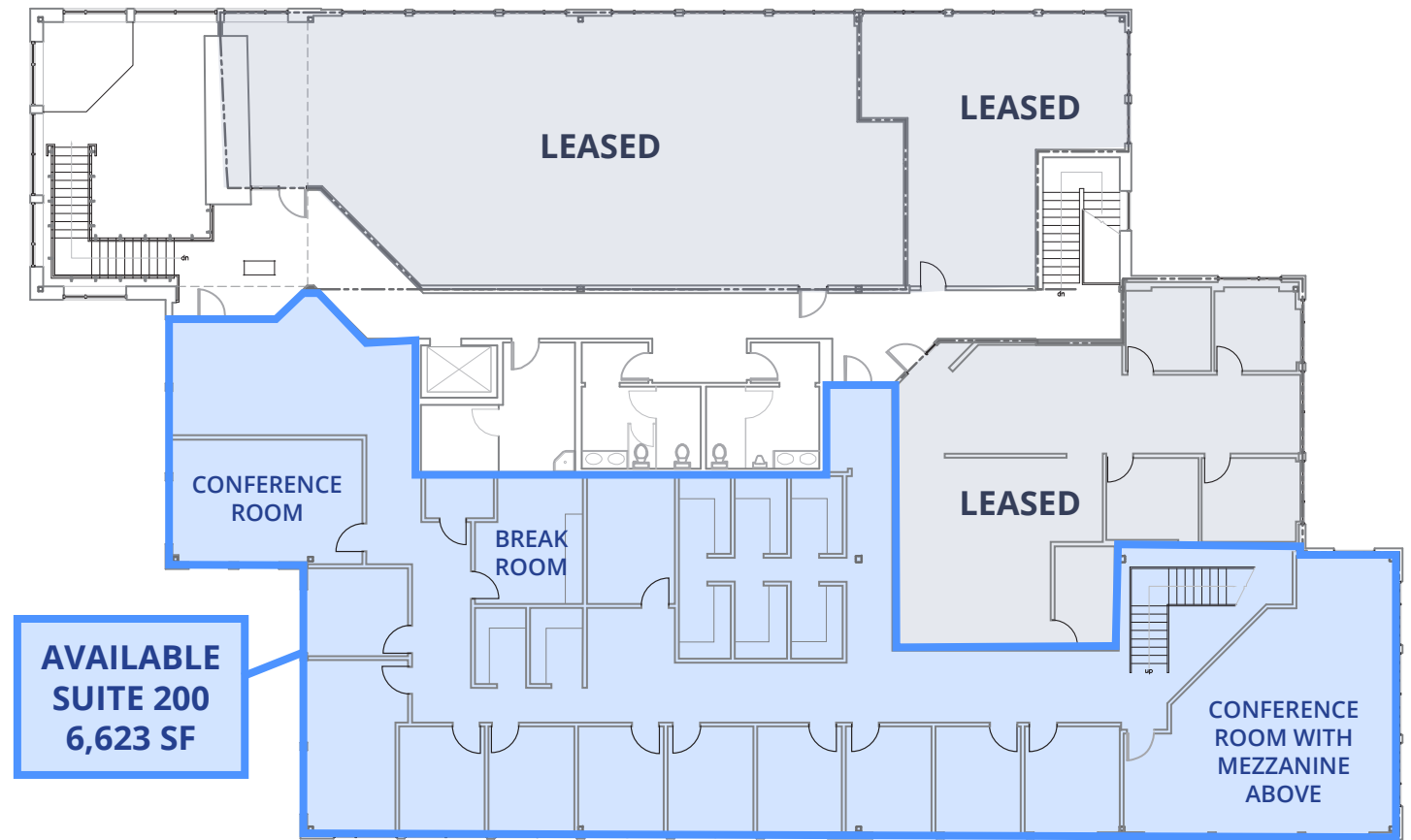
1996 E. 6400 S.
Murray, Utah 84121

| **Suite 200**

6,623 SF | **For Lease**

Freeway Exposure & Access

Unmatched freeway visibility & immediate access to I-215



East Murray Location

- Close proximity to multiple restaurants, amenities and retail services
- Strategic location without the congestion of a large business park
- Direct access to the Cottonwood Canyon Ski Resorts



1996 E. 6400 S.

Murray, Utah 84121

| Suite 200

6,623 SF | For Lease



Area Overview & Demographics

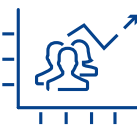
Murray city is located at the heart of the Salt Lake Valley. With a broad mix of commercial, residential and industrial use, Murray is an industrious city with quiet, suburban neighborhoods that diverge with newer, urban mixed-use developments.

Murray is home to the Intermountain Medical Center, Utah’s largest hospital complex, and Fashion Place Mall, one of the busiest and most popular shopping centers in the state. It also offers superior access with easy freeway access to I-15 and I-215, and direct connections to Salt Lake City, Draper, Daybreak, University of Utah, Provo and Ogden via UTA Trax and Frontrunner stations. Additionally, the city’s operation of its own police, fire, power, water, library, parks and recreation and school district result in low city tax rates.



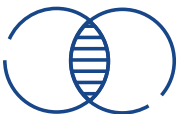
Population

52,463



2029 Projected Population

53,977



Median Age

36.8



Daytime Population

90,121



Median Household Income

\$86,765



Average Household Income

\$116,477

Utah is a national leader in high job growth, low unemployment, low cost of doing business, and talented labor. Utah regularly ranks among the best states for business, careers, living, health, and quality of life. With an array of employment opportunities in various industries, the state offers residents numerous lifestyle options ranging from quiet rural settings to thriving urban centers.

Utah is a geographically diverse state, world-renowned for an abundance of public lands and recreational opportunities from mountain wilderness to desert landscapes. Utah has five national parks, six national forests, and over a dozen ski resorts, some of which will host the 2034 Winter Olympics.

#1

Best State & Best Economy

U.S. News & World Report, 2024

#1

Best Economic Outlook

Rich States Poor States, 2024

#1

Most Affordable State to Live

USA Today, 2024



Office location less than 45 minutes from seven ski resorts

Alta	25
Snowbird	25
Solitude	26
Canyons Village at Park City	30
Brighton	31
Park City Mountain	36
Deer Valley	39





Contact:

Andrew Whitworth
Associate
+1 801 580 3895
andrew.whitworth@colliers.com

Gwen Knight
Executive Vice President
+1 314 422 0467
gwen.knight@colliers.com

Jared Booth, SIOR, CCIM
Executive Vice President
+1 801 573 5959
jared.booth@colliers.com

This document has been prepared by Colliers International for advertising and general information only. Colliers International makes no guarantees, representations or warranties of any kind, expressed or implied, regarding the information including, but not limited to, warranties of content, accuracy and reliability. Any interested party should undertake their own inquiries as to the accuracy of the information. Colliers International excludes unequivocally all inferred or implied terms, conditions and warranties arising out of this document and excludes all liability for loss and damages arising there from. This publication is the copyrighted property of Colliers International and/or its licensor(s). ©2025. All rights reserved.