



Office For Lease



1996 E. 6400 S.
Murray, Utah 84121



Available

Suite 200

8,406 SF

divisible to 1,448 SF & 6,958 SF



Available April 2025

- 2-story office building
- Upscale 2-story lobby
- Furniture available
- Modern, contemporary design & flow
- Parking ratio: 4/1,000
- Spectacular Wasatch Front views

Highly Competitive Lease Rate

\$23.00/SF

Full Service

TI Allowance is available

Contact:

Andrew Whitworth

Associate

+1 801 580 3895

andrew.whitworth@colliers.com

Gwen Knight

Executive Vice President

+1 314 422 0467

gwen.knight@colliers.com

Jared Booth, SIOR, CCIM

Executive Vice President

+1 801 573 5959

jared.booth@colliers.com

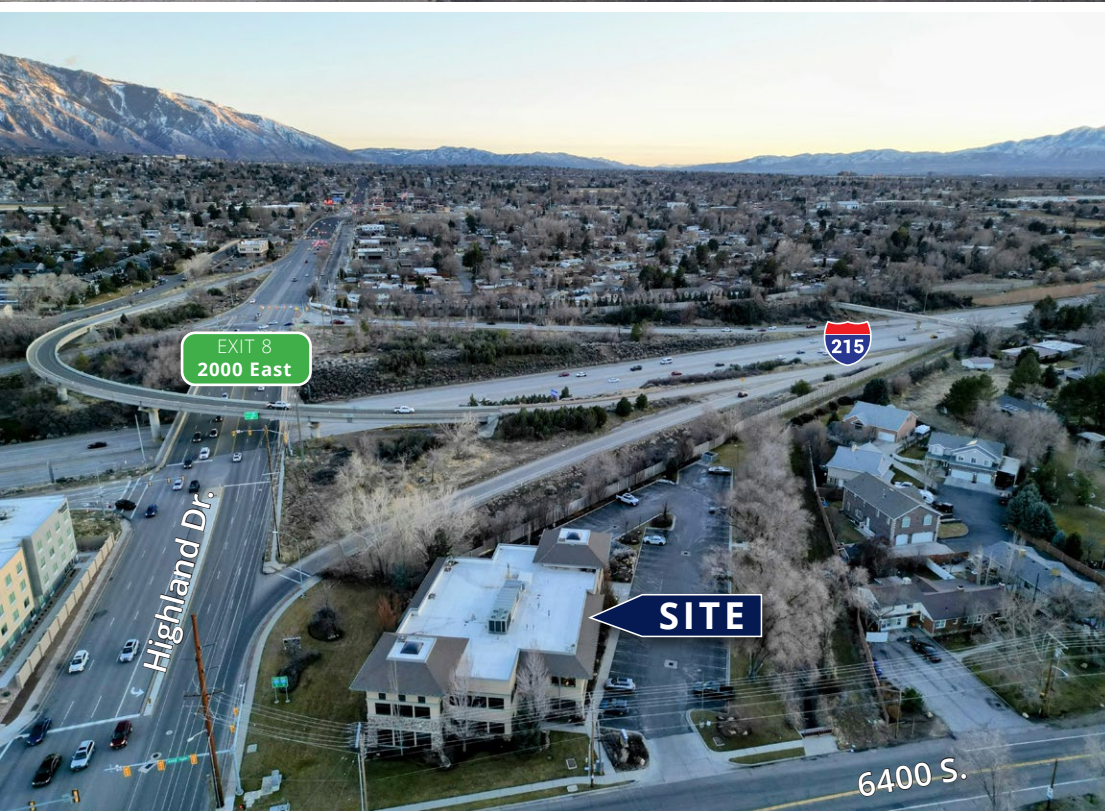
1996 E. 6400 S.

Murray, Utah 84121

Suite 200

Freeway Exposure & Access

Unmatched freeway visibility & immediate access to I-215



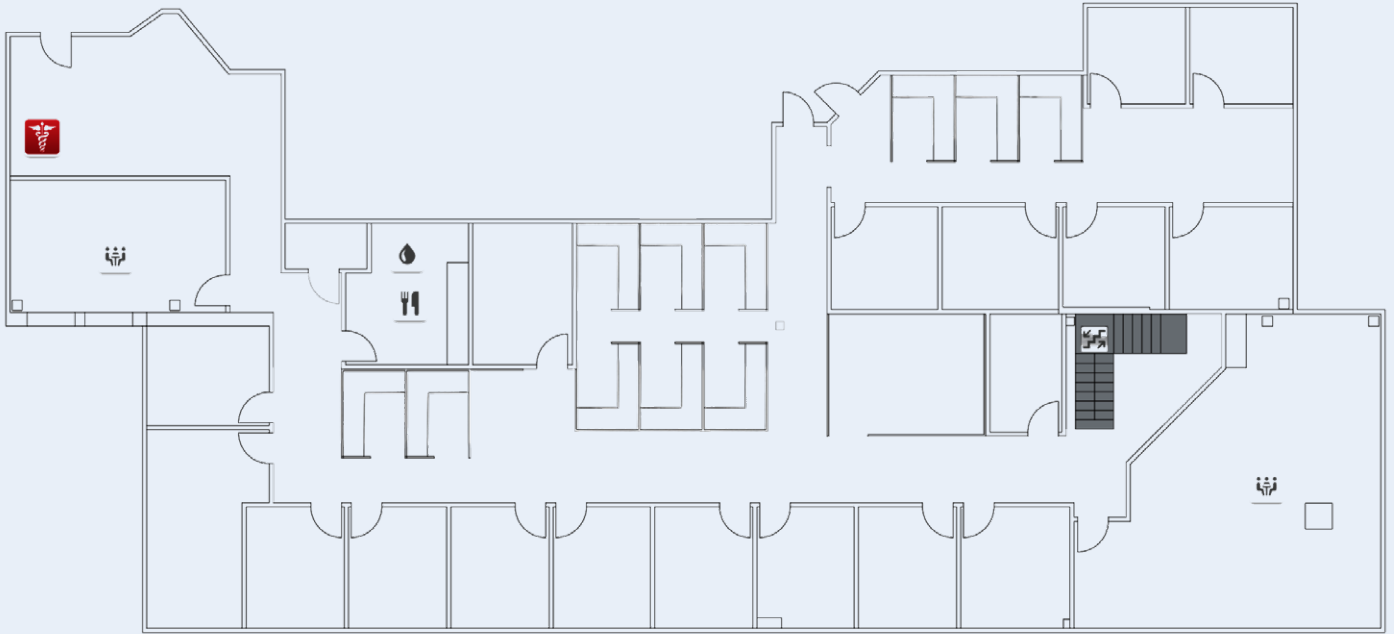
East Murray Location

- Close proximity to multiple restaurants, amenities and retail services
- Strategic location without the congestion of a large business park
- Direct access to the Cottonwood Canyon Ski Resorts

8,406 SF | **For Lease**

divisible to 1,448 SF & 6,958 SF

Colliers





Contact:

Andrew Whitworth

Associate

+1 801 580 3895

andrew.whitworth@colliers.com

Gwen Knight

Executive Vice President

+1 314 422 0467

gwen.knight@colliers.com

Jared Booth, SIOR, CCIM

Executive Vice President

+1 801 573 5959

jared.booth@colliers.com

Colliers

111 S. Main St., Suite 2200

Salt Lake City, UT 84111

Main: +1 801 947 8300

colliers.com

This document has been prepared by Colliers International for advertising and general information only. Colliers International makes no guarantees, representations or warranties of any kind, expressed or implied, regarding the information including, but not limited to, warranties of content, accuracy and reliability. Any interested party should undertake their own inquiries as to the accuracy of the information. Colliers International excludes unequivocally all inferred or implied terms, conditions and warranties arising out of this document and excludes all liability for loss and damages arising there from. This publication is the copyrighted property of Colliers International and/or its licensor(s). ©2025. All rights reserved.