

FOR LEASE > OFFICE BUILDING

300 Cherrington Center Drive

CHERRINGTON CORPORATE CENTER, BUILDING 300, MOON TOWNSHIP, PA 15108



Property Information

- > Significant building renovations recently completed
- > First floor suite up to 6,354 SF
- > Easy access to transportation corridors and excellent visibility in a premier suburban office park
- > Property management on-site
- > Institutional grade ownership

Building 300 > Amenities

- > New building systems throughout
- > Abundant free parking
- > Embassy Suites & Marriott Courtyard within walking distance

LEASE > RATE

Please contact one of our exclusive leasing professionals to discuss lease terms

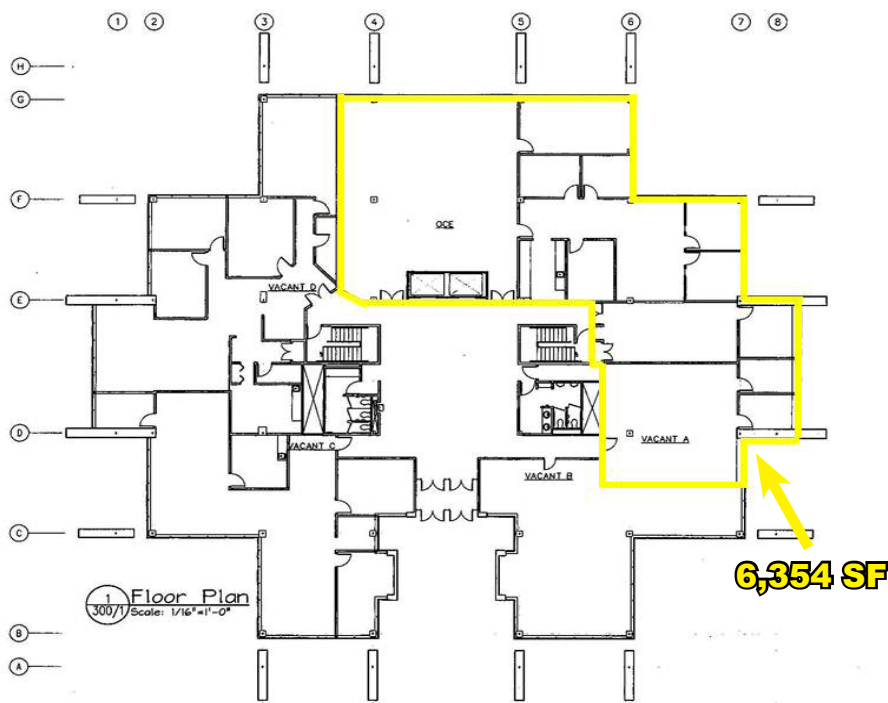


**Equity
Commonwealth**

PAUL HORAN
FOUNDING PRINCIPAL | PITTSBURGH
OFFICE BROKERAGE
412 321 4200 | EXT. 205
paul.horan@colliers.com

EDWARD LAWRENCE - MBA
PRINCIPAL | PITTSBURGH
OFFICE BROKERAGE
412 321 4200 | EXT. 213
ed.lawrence@colliers.com

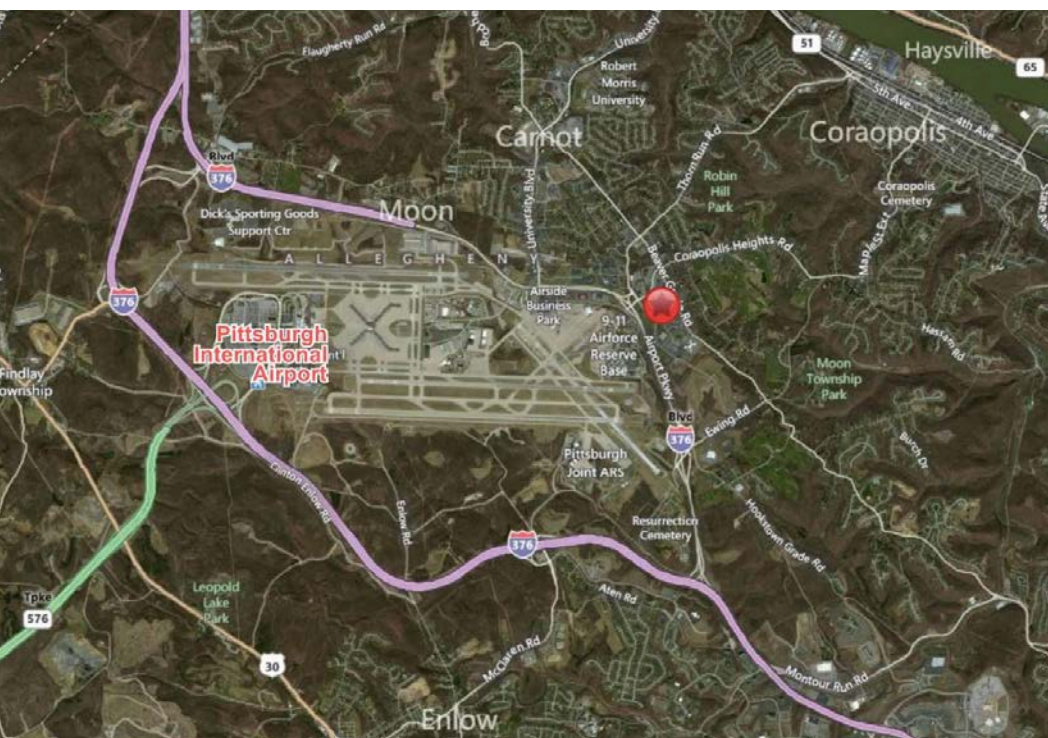
Building 300 > Floor Plan



First Floor

Location > Access

Situated along the Parkway West Corridor, Cherrington Corporate Center | Building 300 is accessible via two interchanges from Route 60 (Ewing Road and Thorn Run Road), located in close proximity to the Pittsburgh International Airport and just 20 minutes to downtown Pittsburgh.



Contact Us

PAUL HORAN

FOUNDING PRINCIPAL | PITTSBURGH

OFFICE BROKERAGE

412 321 4200 | EXT. 205

paul.horan@colliers.com

EDWARD LAWRENCE MBA

PRINCIPAL | PITTSBURGH

OFFICE BROKERAGE

412 321 4200 | EXT. 213

ed.lawrence@colliers.com

COLLIERS INTERNATIONAL | PITTSBURGH

Two Gateway Center, Suite 125

603 Stanwix Street

Pittsburgh, PA 15222

www.colliers.com/pittsburgh



The information contained herein has been given to us by the owner of the property or other sources deemed reliable. We have no reason to doubt its accuracy, but we do not guarantee it. All information should be verified prior to purchase or lease.