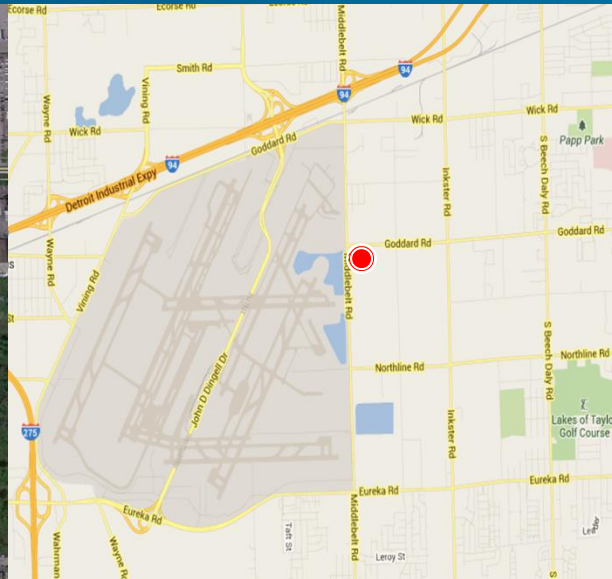


FOR SALE > 9.46 Acres

# Vacant Land Available

GODDARD & MIDDLEBELT ROAD, ROMULUS, MICHIGAN



## Property Amenities

- > 9.46 Acres
- > Zoned MT-2 – Industrial Transportation 2
- > Location Offers Immediate Access to Metro Airport
- > Approximately 1 Mile from I-94 and I-275
- > All Utilities At The Site
- > 330 Feet of Frontage on Goddard Road

## Contact Us

JIM ROBERTS  
248 540 1000 | Ext. 1814  
SOUTHFIELD, MI  
[j.roberts@colliers.com](mailto:j.roberts@colliers.com)

Colliers International has prepared this document/email for advertising or general information only. Information contained herein has been obtained from the owners or from other sources deemed reliable. We have no reason to doubt its accuracy but regret we cannot guarantee it. All properties subject to change or withdrawal without notice.

**COLLIERS INTERNATIONAL**  
2 Corporate Drive, Suite 300  
Southfield, MI 48076  
[www.colliers.com](http://www.colliers.com)

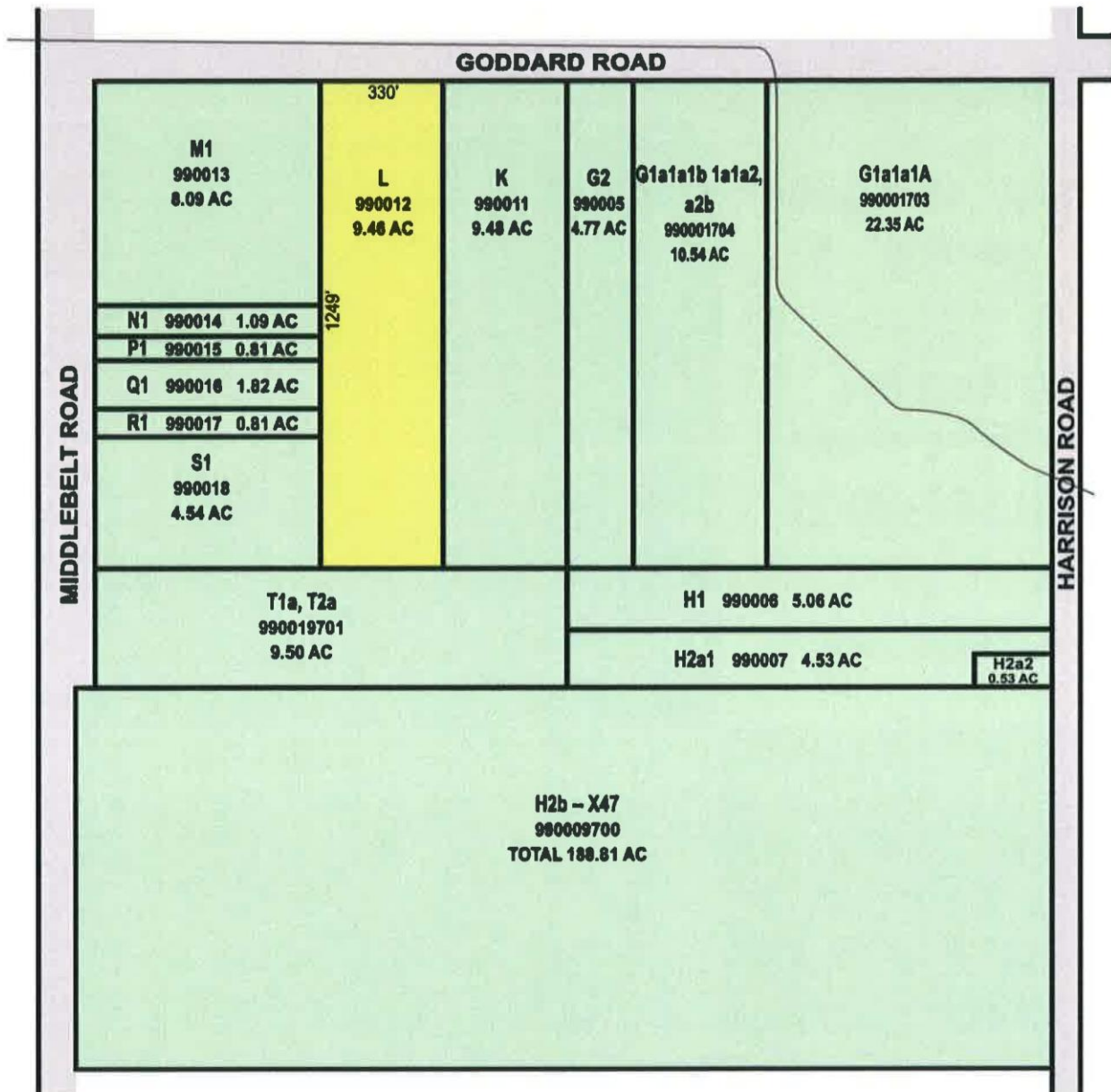
FOR SALE > 9.46 Acres



# Vacant Land Available

GODDARD & MIDDLEBELT ROAD, ROMULUS, MICHIGAN

Land Survey



Colliers International has prepared this document/email for advertising or general information only. Information contained herein has been obtained from the owners or from other sources deemed reliable. We have no reason to doubt its accuracy but regret we cannot guarantee it. All properties subject to change or withdrawal without notice.

**COLLIERS INTERNATIONAL**  
2 Corporate Drive, Suite 300  
Southfield, MI 48076  
[www.colliers.com](http://www.colliers.com)

# Land Availability

## For Sale

Vacant Land 9.46 Acres



Goddard & Middlebelt Roads

Romulus, MI 48174

**Sale Price:** \$1,419,000

**Acreage- Min.** 9.46

**Acreage-Max.** 9.46

**Dimensions:** 1249 x330

**Zoning:** MT-2 (industrial / transportation 2)

**Possible Use:** industrial, transporta

**Utilities:** water / sewer / gas

**Property Taxes:**

**Lease Price / SF:**

**School District:**

**County:** Wayne

**Crossroads:** Middlebelt Rd

**Parcel #:** 82-880-094-99-0012-000

- > One of the few vacant land parcels remaining in Romulus.
- > Zoned MT-2 ( industrial Transportation 2)
- > Superb location fo any trucking or logistics company
- > All utilities

**For more information, contact:**



**Jim Roberts**

J.Roberts@colliers.com

**(248) 540-1000**

2 Corporate Drive, Suite 300  
Southfield, MI 48076  
Phone: 248 540 1000

400 E. Washington St.  
Ann Arbor, MI 48104  
Phone: 734 994 3100