


FOR LEASE

colliers.com/tampabay  VIEW ONLINE

Incredible  
Transformation  
opportunity

10050

North Florida Avenue

TAMPA | FLORIDA | 33612

57,012 Square Feet of Office  
Space Available for Lease

- Well capitalized ownership group
- Efficient floorplate design
- Exterior building signage opportunities
- All floors available for customized build-out
- Rooftop terrace on 3<sup>rd</sup> floor
- Ground floor outdoor lounge area



Colliers International  
4380 West Kennedy Boulevard | Suite 300  
Tampa, Florida 33609  
813 221 2290

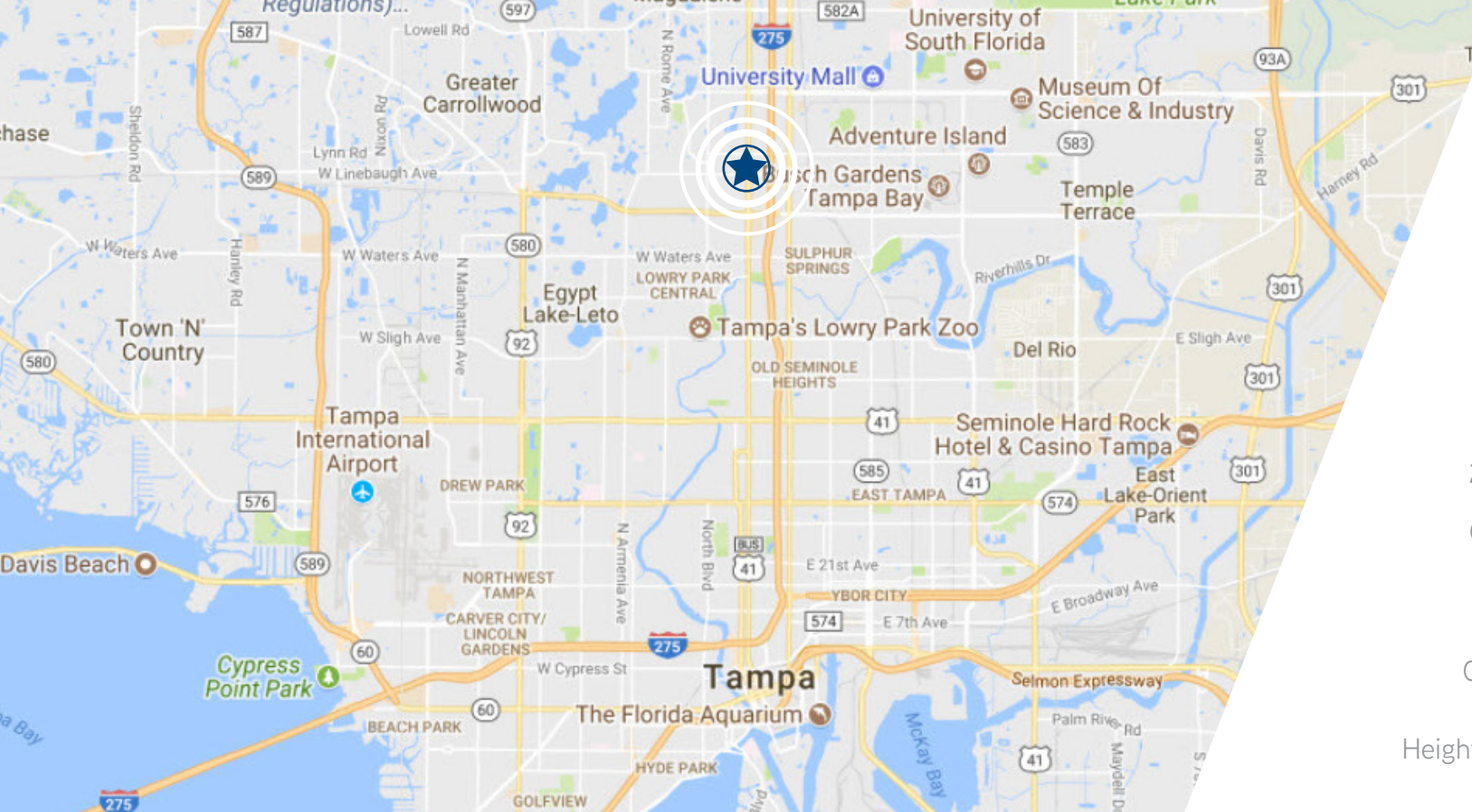
**Megan Lawler**

Associate  
Main: 813 221 2290  
Direct: 813 871 8526  
megan.lawler@colliers.com

**Mia Jarrell**

Executive Managing Director  
Main: 813 221 2290  
Direct: 813 871 8539  
mia.jarrell@colliers.com





Easy access  
to the local  
airport, public  
transportation,  
restaurants, and  
retail services

Average daily traffic volume of  
26,000 cars on Florida Avenue

Central location between North  
Tampa/Wesley Chapel and  
Downtown/South Tampa

Close proximity to I-275, Tampa  
Business District, Tampa  
Heights, and Seminole Heights areas



**Building**  
57,012  
Square Feet



**Floors**  
4-Story



**Floor Plate Sizes**  
11,554 - 21,041  
Square Feet



**Availability**  
11,554 - 57,012  
Square Feet



**Parking**  
Up to 5/1,000  
or 300 Parking  
Spaces



**24-Hour  
Secured Access**



**IT Carrier**  
Verizon or  
Spectrum



**Tampa International  
Airport**  
20 min. Drive



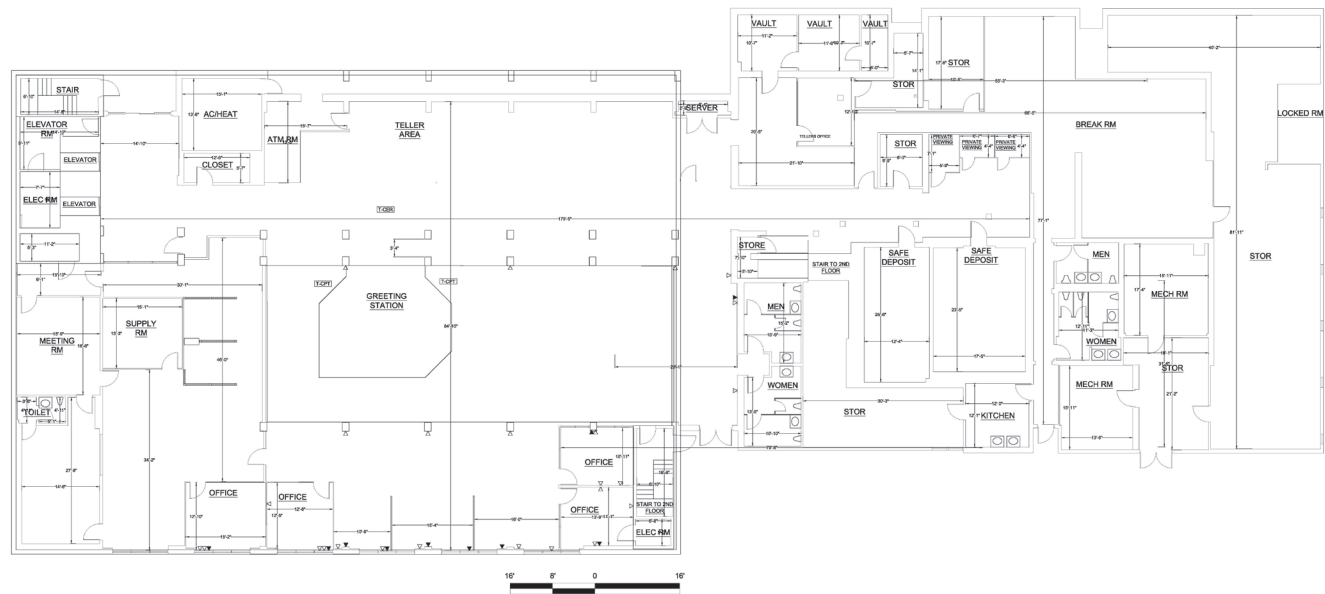




Conceptual Renderings and Images

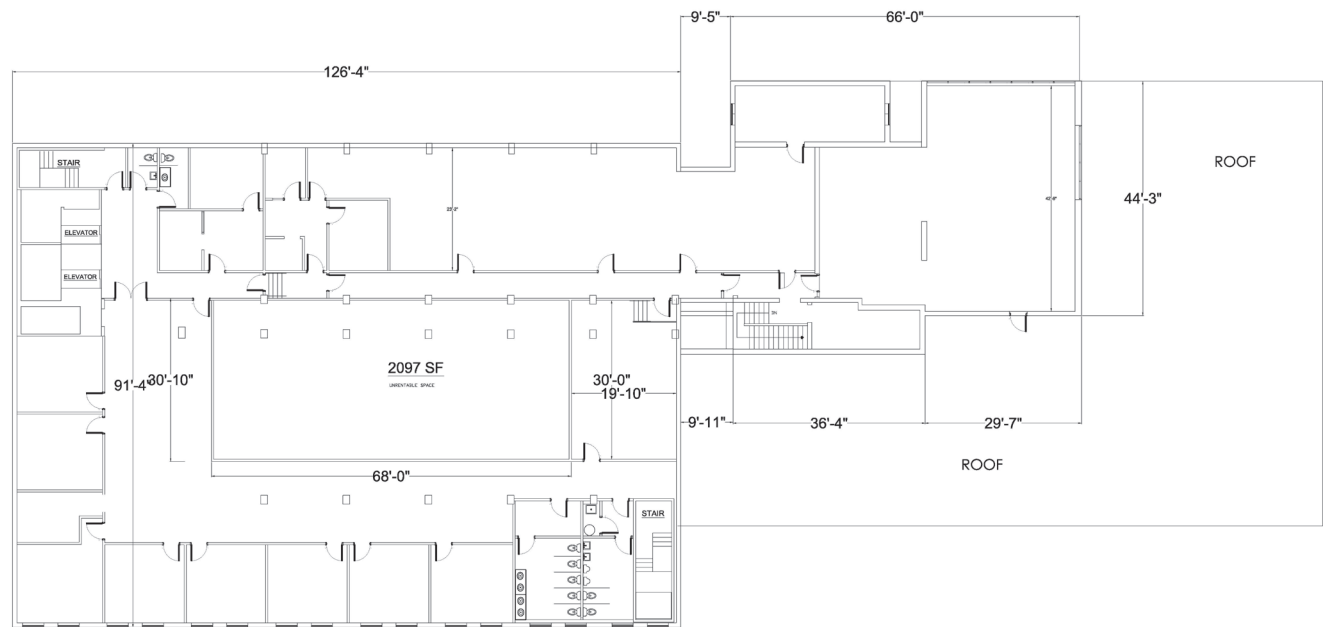
AS BUILT FLOOR PLAN

First Floor  
21,041 RSF



AS BUILT FLOOR PLAN

Second Floor  
12,863 RSF



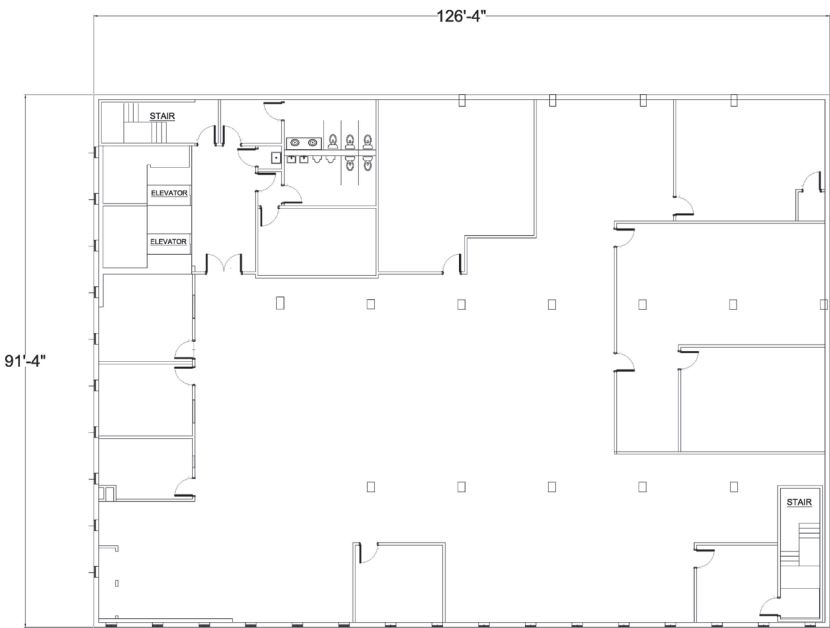
AS BUILT FLOOR PLAN

Third Floor  
11,554 RSF



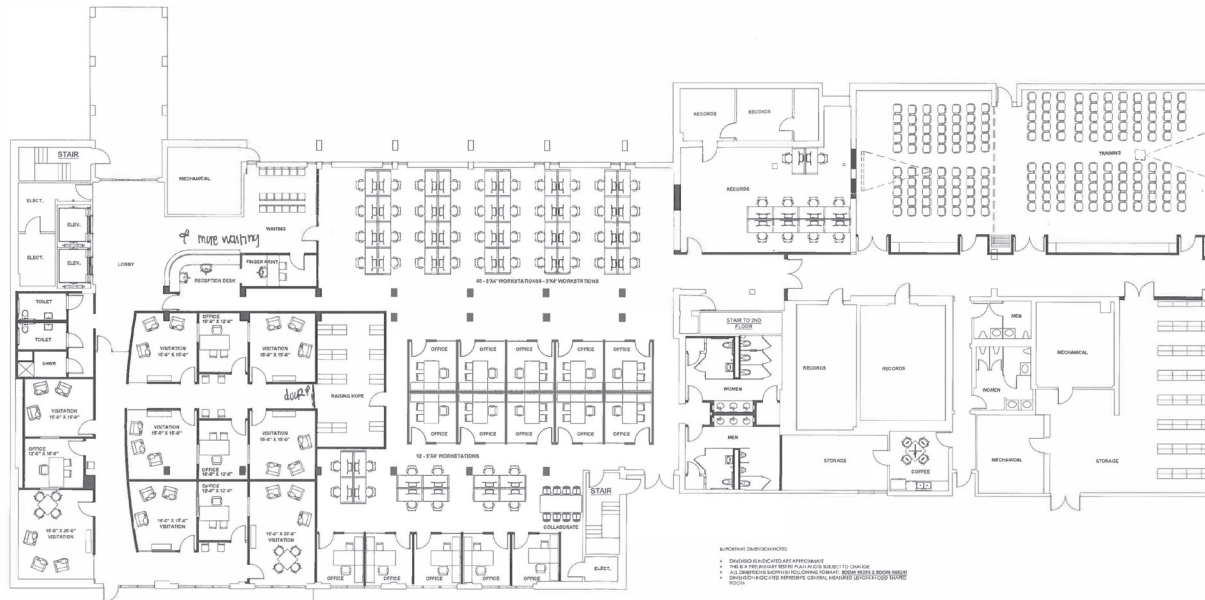
AS BUILT FLOOR PLAN

Fourth Floor  
11,554 RSF



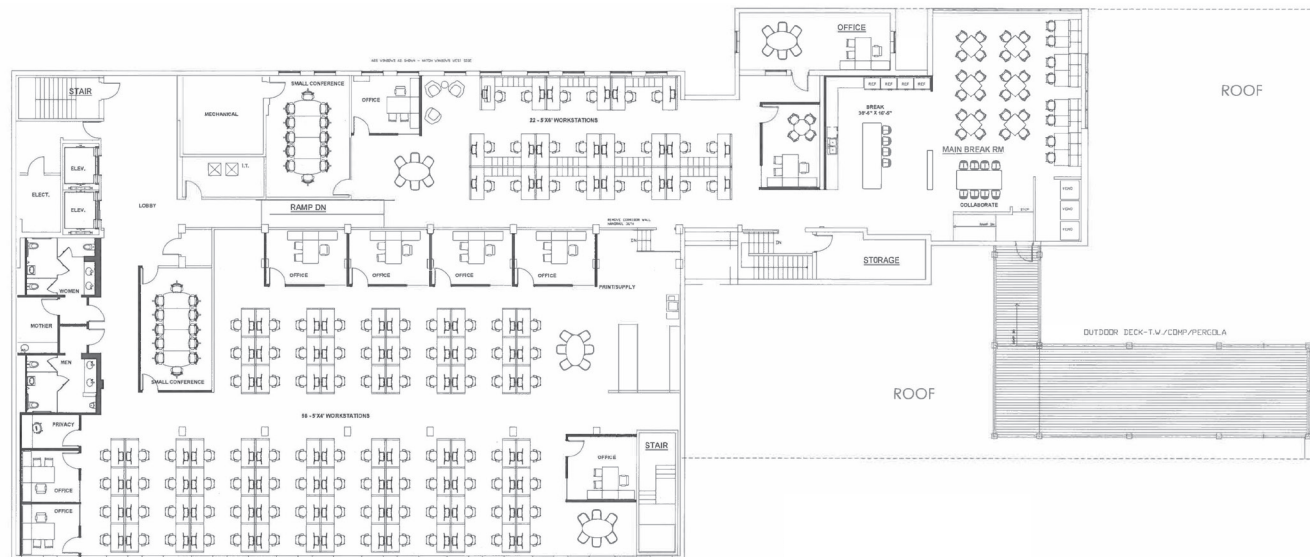
## CONCEPTUAL FLOOR PLAN

First Floor  
21,041 RSF



## CONCEPTUAL FLOOR PLAN

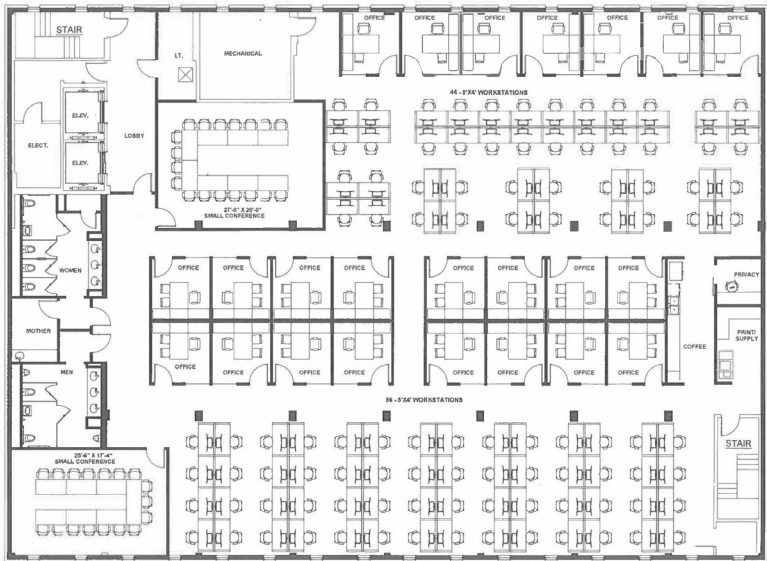
Second Floor  
12,863 RSF





CONCEPTUAL FLOOR PLAN

Third Floor  
11,554 RSF



CONCEPTUAL FLOOR PLAN

Fourth Floor  
11,554 RSF

