

FOR LEASE > RETAIL SPACE

# Brigham City Shopko

747 SOUTH MAIN STREET , BRIGHAM CITY , UTAH, 84302



## Property Information

- > Former Brigham City, Utah Shopko property available for Lease
- > Building Size: 70,000 square feet (space can be demised)
- > Lease Rate: \$6.00 PSF NNN
- > Property Size: 6.83 acres total
- > Great Pad opportunities in the existing parking lot along busy Main Street
- > Centrally and strategically located along busy Main Street with great access and exposure
- > Traffic Counts on Main Street: 19,000 ADT

DEMOGRAPHICS	1 MILE	3 MILE	5 MILE
<b>Population</b>			
2018 Estimated	9,091	23,976	26,118
2023 Projected	9,816	25,587	27,946
<b>Households</b>			
2018 Estimated	3,060	7,859	8,519
2023 Projected	3,299	8,368	9,094
<b>Income</b>			
2018 Median HHI	\$57,054	\$62,314	\$63,369
2018 Average HHI	\$68,802	\$75,208	\$76,607
2018 Per Capita	\$23,717	\$25,092	\$25,410

*Information provided by ESRI Business Analyst*

**Tyson Moore**  
+1 801 453 6815  
tyson.moore@colliers.com

**Dan Moore**  
+1 801 947 8365  
dan.moore@colliers.com

**Rob Moore, CCIM**  
+1 801 947 8370  
rob.moore@colliers.com

**Colliers International**  
6550 S Millrock Dr | Suite 200  
Salt Lake City, UT 84121  
P: +1 801 947 8300



FOR LEASE > RETAIL SPACE

# Brigham City Shopko

747 SOUTH MAIN STREET , BRIGHAM CITY , UTAH, 84302



This document has been prepared by Colliers International for advertising and general information only. Colliers International makes no guarantees, representations or warranties of any kind, expressed or implied, regarding the information including, but not limited to, warranties of content, accuracy and reliability. Any interested party should undertake their own inquiries as to the accuracy of the information. Colliers International excludes unequivocally all inferred or implied terms, conditions and warranties arising out of this document and excludes all liability for loss and damages arising there from. This publication is the copyrighted property of Colliers International and/or its licensor(s). ©2017. All rights reserved.

Colliers International  
6550 S Millrock Dr | Suite 200  
Salt Lake City, UT 84121  
P: +1 801 947 8300



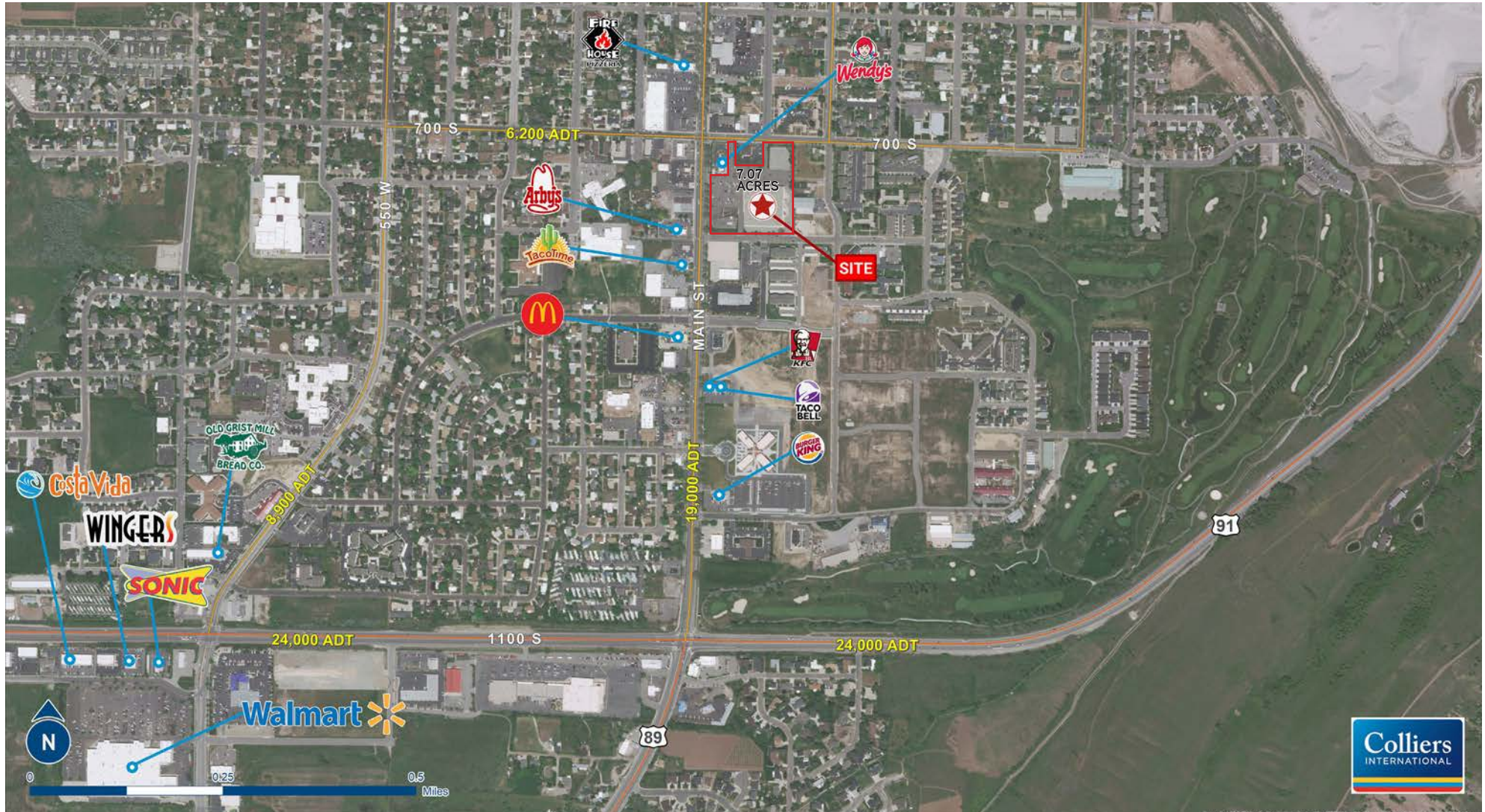
Accelerating success.



FOR LEASE > RETAIL SPACE

# Brigham City Shopko

747 SOUTH MAIN STREET , BRIGHAM CITY , UTAH, 84302



This document has been prepared by Colliers International for advertising and general information only. Colliers International makes no guarantees, representations or warranties of any kind, expressed or implied, regarding the information including, but not limited to, warranties of content, accuracy and reliability. Any interested party should undertake their own inquiries as to the accuracy of the information. Colliers International excludes unequivocally all inferred or implied terms, conditions and warranties arising out of this document and excludes all liability for loss and damages arising there from. This publication is the copyrighted property of Colliers International and/or its licensor(s). ©2017. All rights reserved.

Colliers International  
6550 S Millrock Dr | Suite 200  
Salt Lake City, UT 84121  
P: +1 801 947 8300



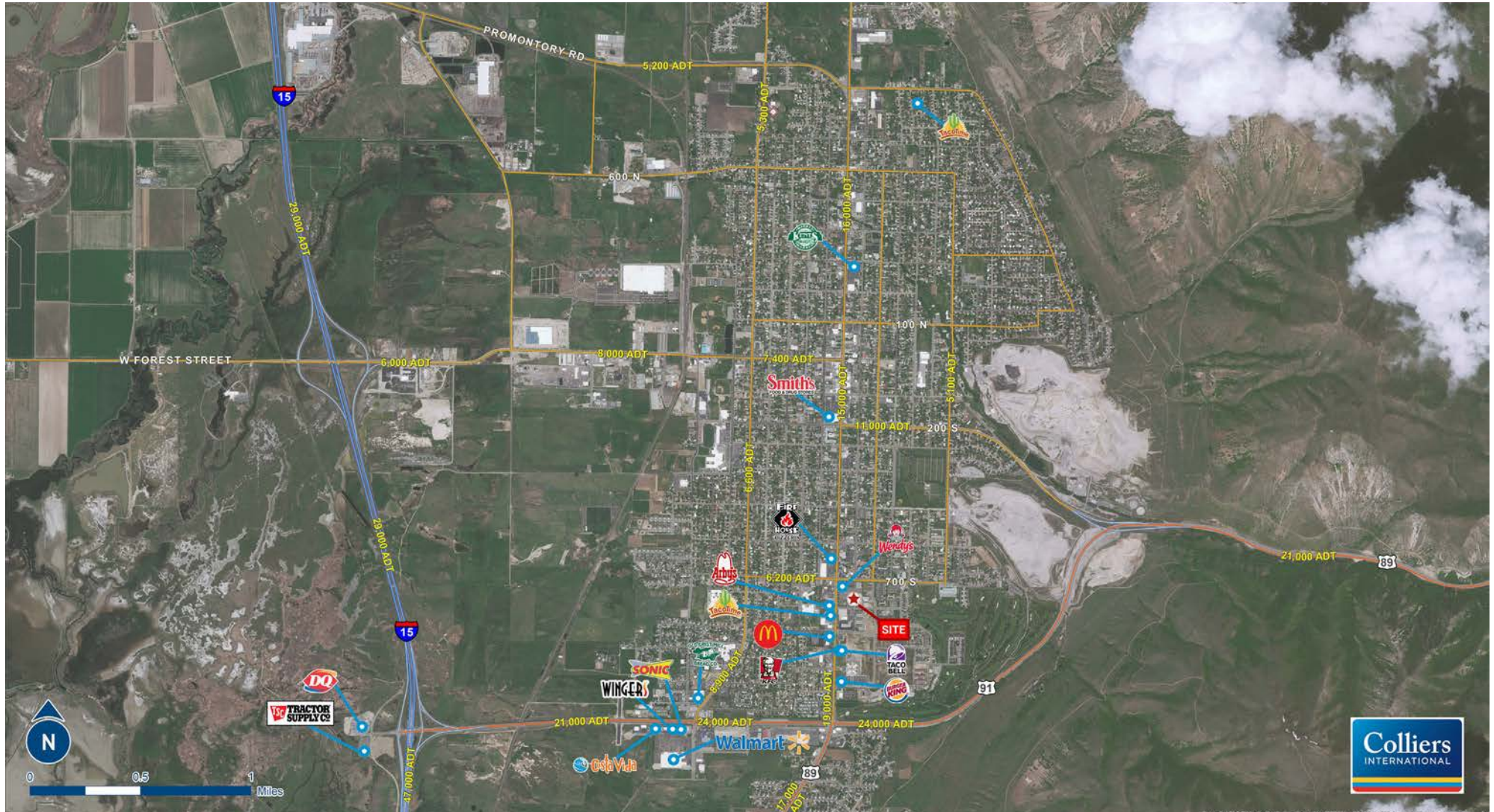
Accelerating success.



FOR LEASE > RETAIL SPACE

# Brigham City Shopko

747 SOUTH MAIN STREET , BRIGHAM CITY , UTAH, 84302



This document has been prepared by Colliers International for advertising and general information only. Colliers International makes no guarantees, representations or warranties of any kind, expressed or implied, regarding the information including, but not limited to, warranties of content, accuracy and reliability. Any interested party should undertake their own inquiries as to the accuracy of the information. Colliers International excludes unequivocally all inferred or implied terms, conditions and warranties arising out of this document and excludes all liability for loss and damages arising there from. This publication is the copyrighted property of Colliers International and/or its licensor(s). ©2017. All rights reserved.

Colliers International  
6550 S Millrock Dr | Suite 200  
Salt Lake City, UT 84121  
P: +1 801 947 8300



Accelerating success.