



Maplewood, Minnesota Land For Sale

LOUIS SUAREZ ccim
952 837 3061
louis.suarez@colliers.com

BRIAN BRUGGEMAN ccim
952 837 3079
brian.briggeman@colliers.com



COLLIERS INTERNATIONAL
900 2nd Avenue S, Suite 1575
Minneapolis, MN 55402
www.colliers.com/msp

KEY FEATURES/HIGHLIGHTS

- › Located in southwest quadrant of White Bear Avenue and County Road C East in Maplewood
- › 3.76 Acres (163,785 square feet)
- › Close to numerous restaurant, retail outlets, including Maplewood Mall
- › Nearby several lakes and park areas
- › Easy access to I-694 and Highway 36
- › Possible access from White Bear Avenue
- › Perfect location for housing development, senior housing or hotel

FOR SALE > VACANT LAND

Address: SEQ County Rd C E and White Bear Ave,
Maplewood, MN 55109

Land Size: 3.76 Acres / 1653,785 square feet

Current Zoning: Commercial Vacant Land

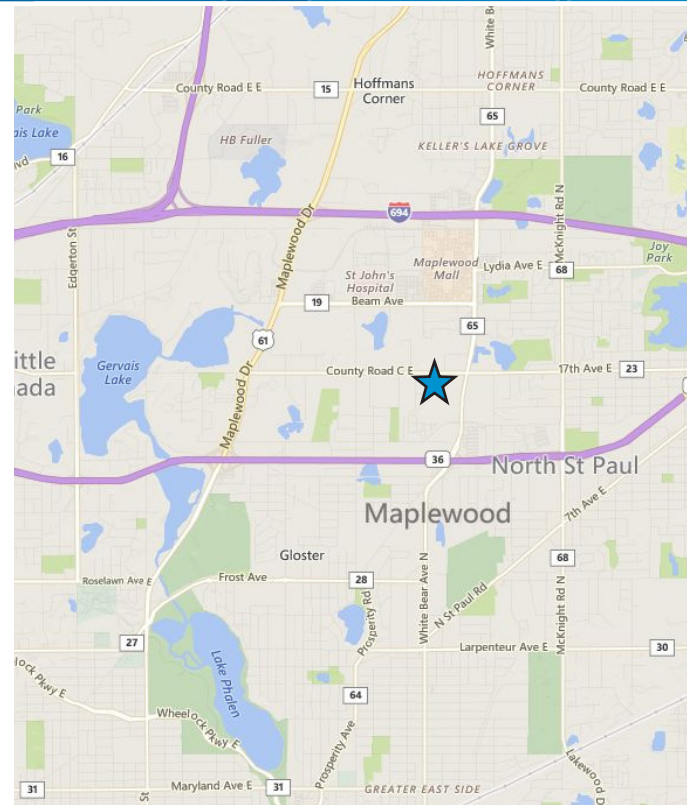
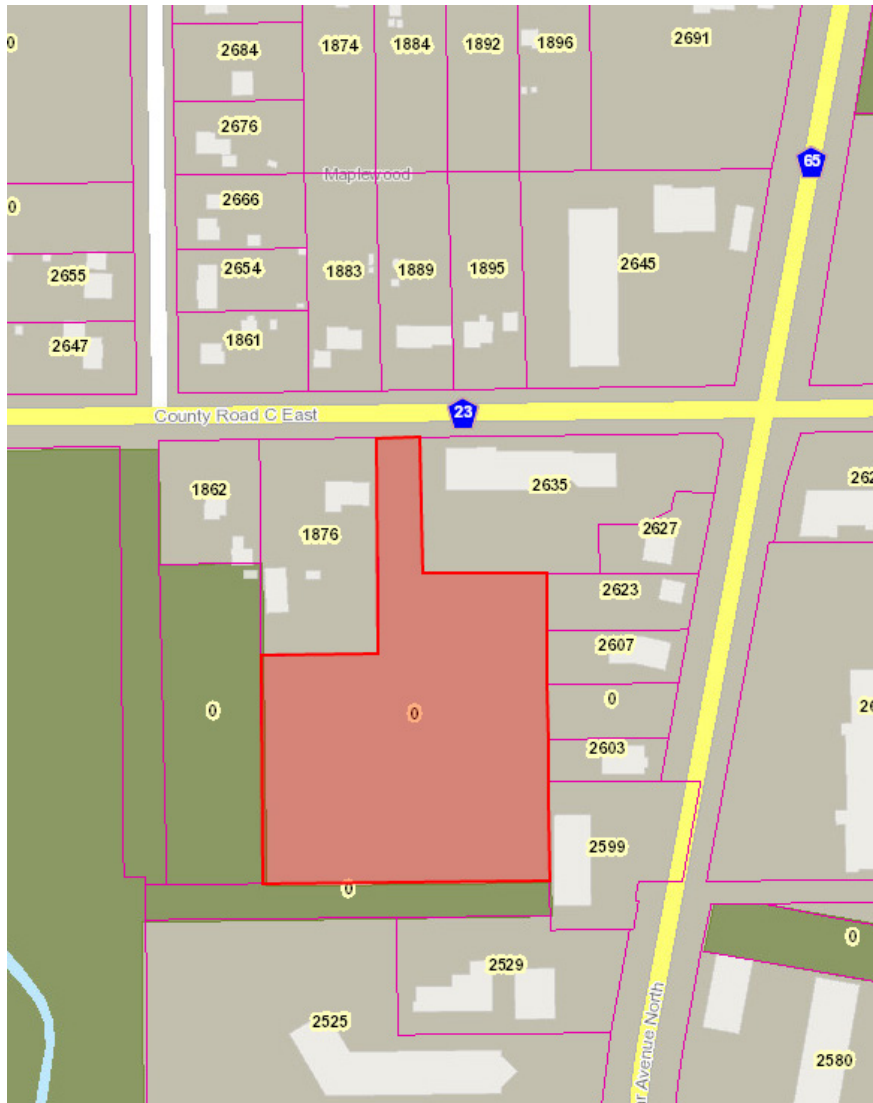
PID#: 11-29-22-22-0041

Sale Price: \$1,000,000.00

2016 Property Taxes: \$25,130

2016 Special Assessments: \$0.00

RAMSEY COUNTY PARCEL MAP



CONTACT US

LOUIS SUAREZ CCIM
952 837 3061
louis.suarez@colliers.com

BRIAN BRUGGEMAN CCIM
952 837 3079
brian.bruggeman@colliers.com

This document/email has been prepared by Colliers International for advertising and general information only. Colliers International makes no guarantees, representations or warranties of any kind, expressed or implied, regarding the information including, but not limited to, warranties of content, accuracy and reliability. Any interested party should undertake their own inquiries as to the accuracy of the information. Colliers International excludes unequivocally all inferred or implied terms, conditions and warranties arising out of this document and excludes all liability for loss and damages arising there from. This publication is the copyrighted property of Colliers International and/or its licensor(s). © 2016. All rights reserved. This communication is not intended to cause or induce breach of an existing listing agreement.



COLLIERS INTERNATIONAL
900 2nd Avenue S, Suite 1575
Minneapolis, MN 55402
www.colliers.com/msp