

OFFICE/FLEX SPACE FOR LEASE >

Eagle Lake III Business Center

7351 KIRKWOOD LANE NORTH | MAPLE GOVE, MN 55369



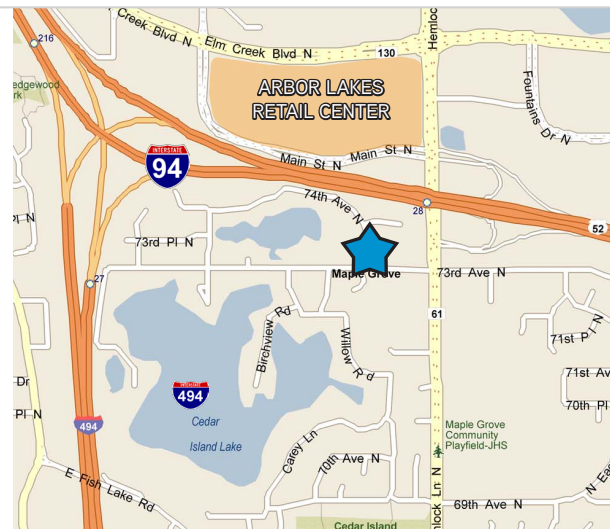
Accelerating success.



Up to 38,363 SF Available

BUILDING AMENITIES

- > 95,260 SF office/flex building
- > Available space up to 38,363 square feet
- > Freeway visibility
- > Built in 1998
- > 18' clear height
- > Dock & drive-in loading
- > Class "A" brick & ribbon-glass facility
- > 284 parking stalls or 3.00/1,000 ratio
- > Immediate access to I-94, I-494, & Highway 169
- > Near many area amenities via Arbor Lakes Retail Center
- > Individual signage for each suite



CONTACT US >

Steve Nilsson CCIM SIOR
952 897 7899

steve.nilsson@colliers.com

Erik Nordstrom
952 897 7885

erik.nordstrom@colliers.com

EAGLE LAKE III BUSINESS CENTER >

AMENITIES

- > Class "A" brick and ribbon-glass facility
- > Energy efficient construction
- > Individual signage for each suite
- > Immediate access to I-94, I-494 & Highway 169
- > Near many area amenities via Arbor Lakes Retail Center
- > Institutionally owned and professionally managed by Sentinel Real Estate



AVAILABLE VACANCY

> SUITE 126*

10,000 SF Total
5,240 SF Office
4,760 SF Warehouse
Three (3) Dock doors

> SUITE 130*

12,685 SF Total
6,395 SF Office
3,355 SF Warehouse
2,935 SF Production
One (1) Dock door

> SUITE 134-140*

15,678 SF Total
5,042 SF Office
10,636 SF Office/Tech
Three (3) Drive-in doors

> *SUITES 126 & 130 & 134-140

38,363 SF Total
22,271 SF Office/Tech
13,157 SF Warehouse
2,935 SF Production
Four (4) Dock doors and Three (3) Drive-in doors

PARKING STALLS

284 stalls or 3.00/1,000

YEAR BUILT

1998

CLEAR HEIGHT

18'

ZONING

FF, Freeway Frontage

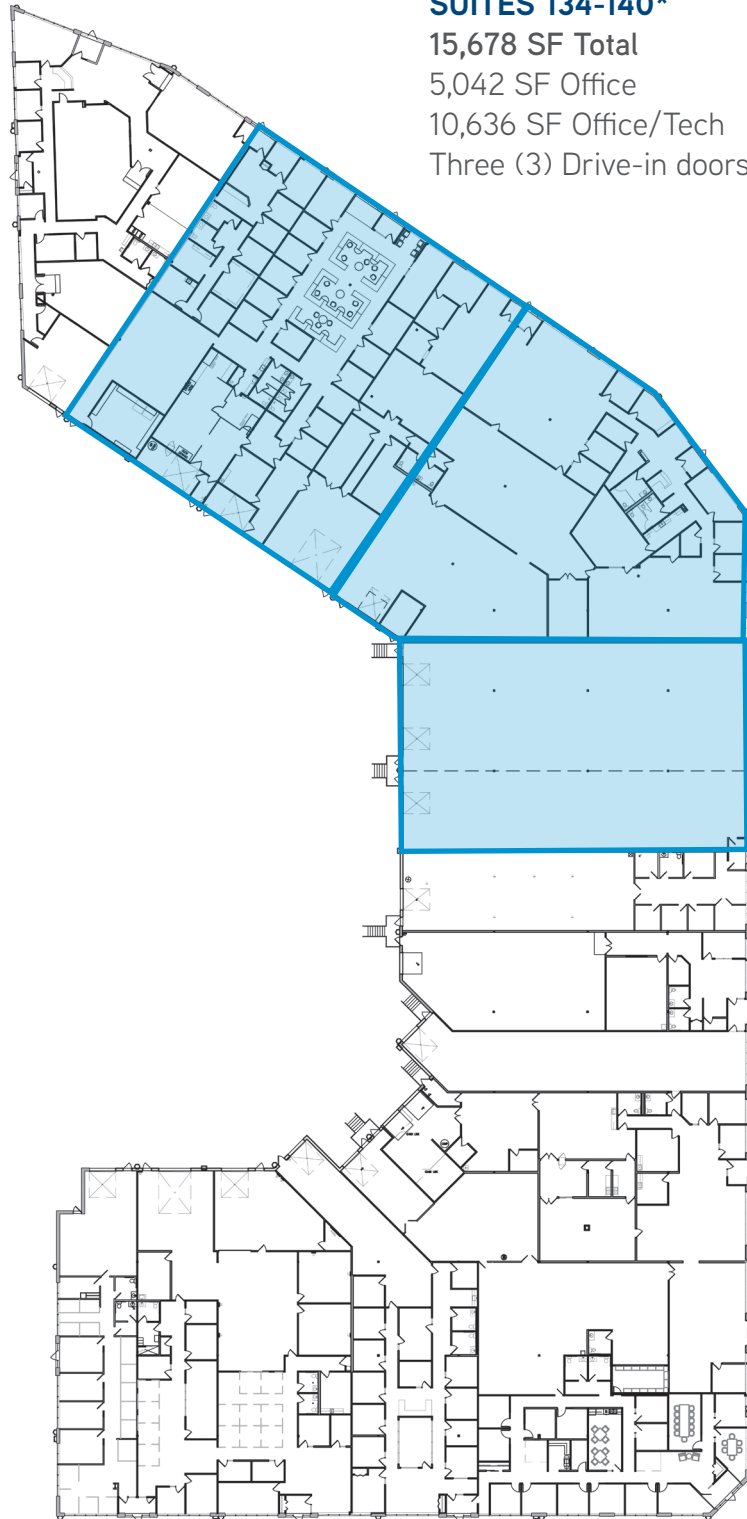
2018 CAM/TAX EST.

\$2.07 PSF CAM
\$2.21 PSF Tax
\$4.28 PSF Total

NET RENTAL RATE

\$10.00 PSF Office
\$5.00 PSF Flex/Warehouse area

SITE MAP



SUITES 134-140*

15,678 SF Total

5,042 SF Office

10,636 SF Office/Tech

Three (3) Drive-in doors

SUITE 130*

12,685 SF Total

6,395 SF Office

3,355 SF Warehouse

2,935 SF Production

One (1) Dock door

SUITE 126*

10,000 SF Total

5,240 SF Office

4,760 SF Warehouse

Three (3) Dock doors

***SUITES 126-140**

38,363 SF Total

22,271 SF Office/Tech

13,157 SF Warehouse

2,935 SF Production

Four (4) Dock doors

Three (3) Drive-in doors



ARBOR LAKES RETAIL CENTER

EAGLE LAKE III BUSINESS CENTER >



Accelerating success.

Colliers International | Minneapolis-St. Paul
900 2nd Avenue South, Suite 1575
Minneapolis | MN 55402

colliers.com/msp

CONTACT US >



Steve Nilsson CCIM SIOR
952 897 7899
steve.nilsson@colliers.com



Erik Nordstrom
952 897 7885
erik.nordstrom@colliers.com



SUBSCRIBE TO OUR BLOG

FLOOR PLAN >

EAGLE LAKE BUSINESS CENTER III

7351 KIRKWOOD LANE NORTH | MAPLE GOVE, MN 55369



Accelerating success.

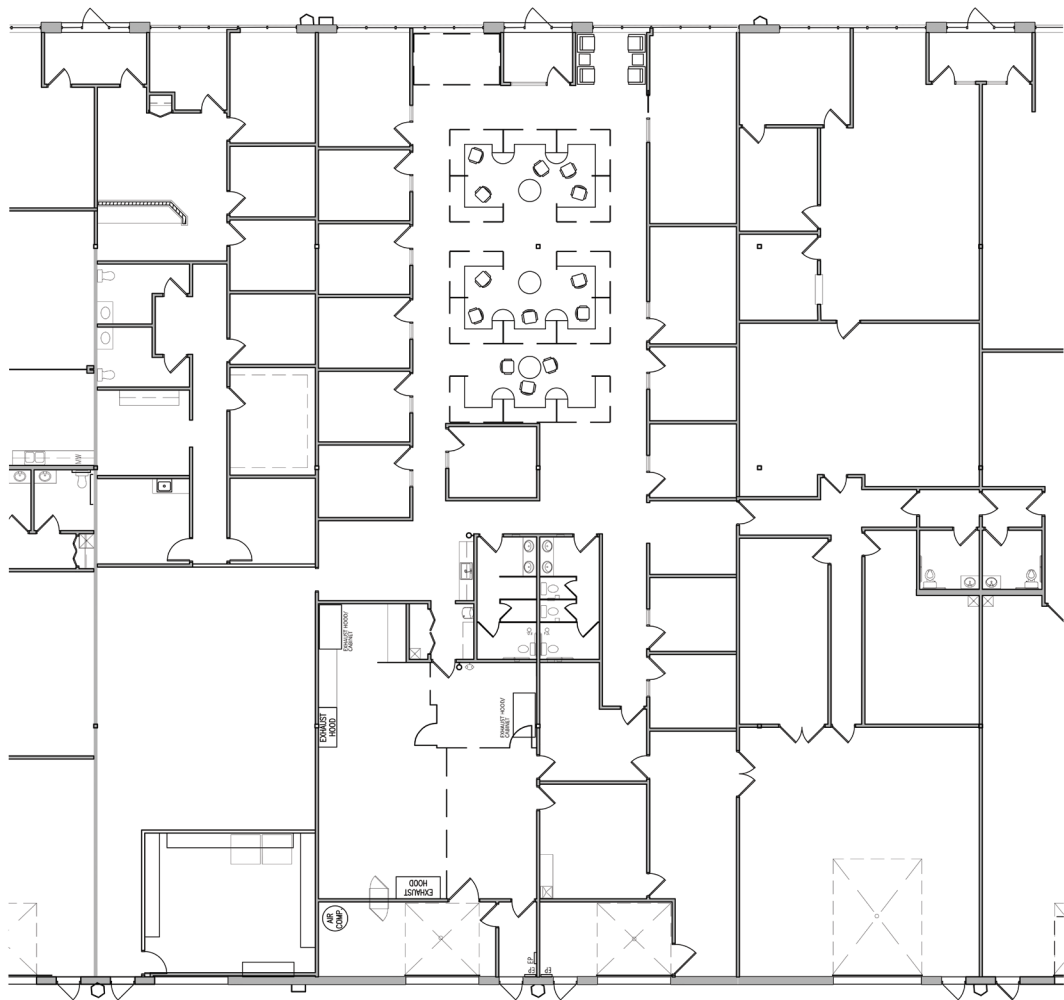
> FLOOR PLAN

SUITES 134-140

15,678 SF Total

10,636 SF Office/Tech

Three (3) Drive-in door



CONTACT US

Steve Nilsson CCIM, SIOR

952 897 7899

steve.nilsson@colliers.com

Erik Nordsrom

952 897 7885

erik.nordstrom@colliers.com

FLOOR PLAN >

EAGLE LAKE BUSINESS CENTER III

7351 KIRKWOOD LANE NORTH | MAPLE GOVE, MN 55369



Accelerating success.

> FLOOR PLAN

SUITE 130

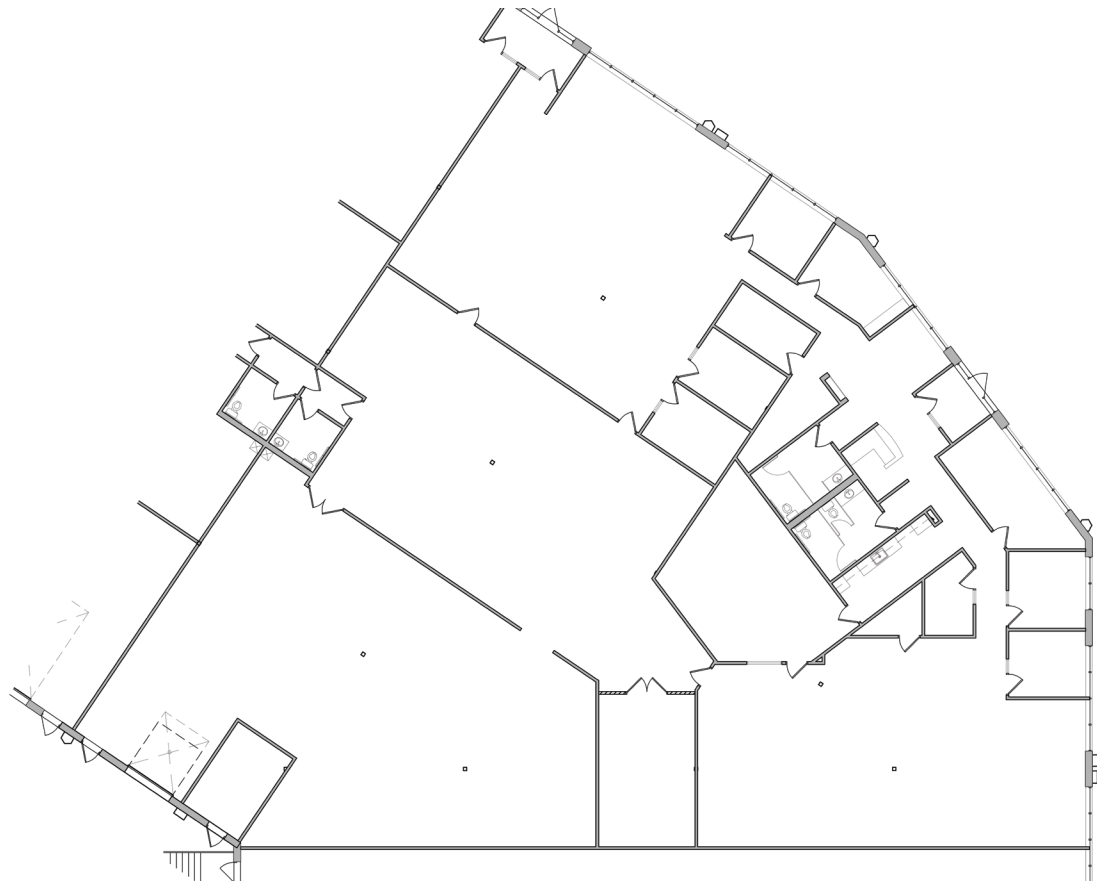
12,685 SF Total

6,395 SF Office

3,355 SF Warehouse

2,935 SF Production

One (1) Dock door



CONTACT US

Steve Nilsson CCIM, SIOR

952 897 7899

steve.nilsson@colliers.com

Erik Nordsrom

952 897 7885

erik.nordstrom@colliers.com

FLOOR PLAN >

EAGLE LAKE BUSINESS CENTER III

7351 KIRKWOOD LANE NORTH | MAPLE GOVE, MN 55369



Accelerating success.

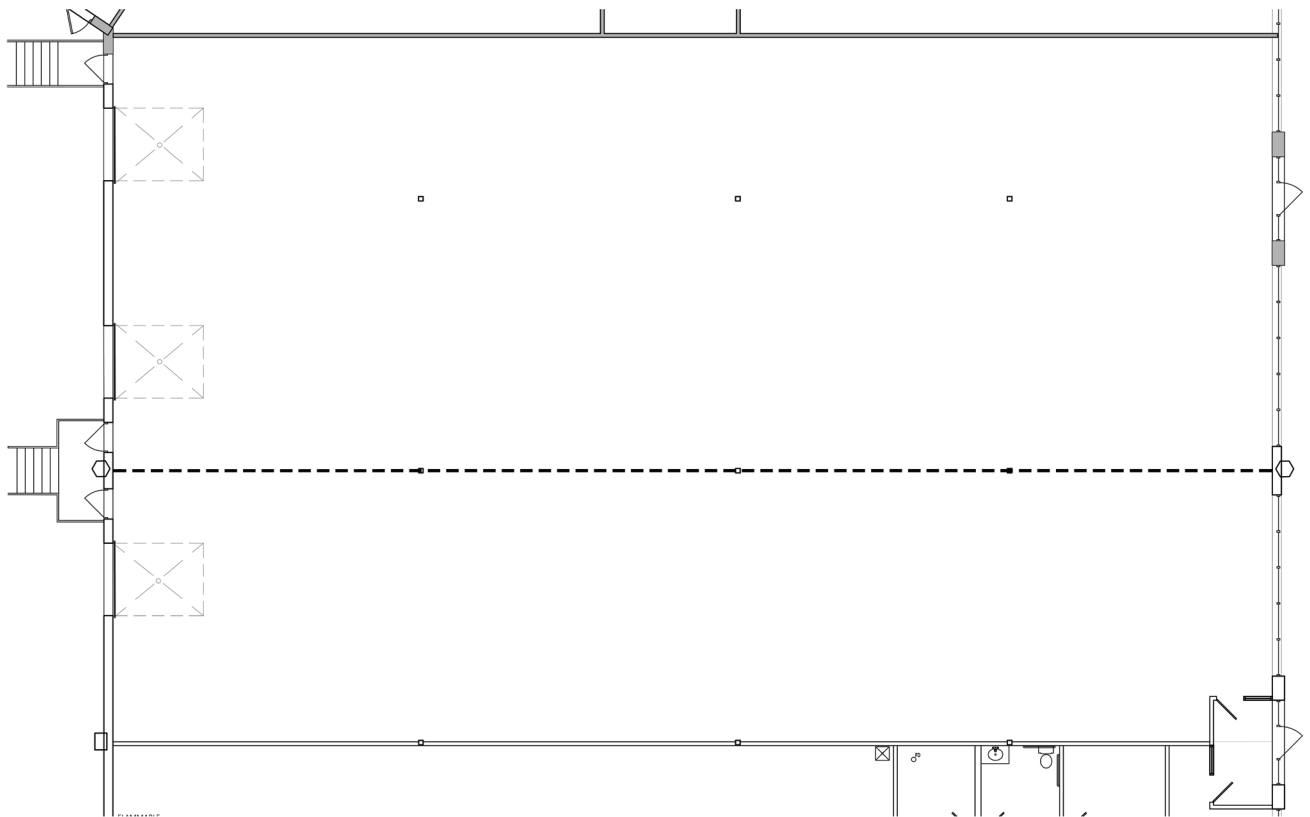
> FLOOR PLAN

SUITE 126

10,000 SF Total

5,240 SF Office

Three (3) Dock doors



CONTACT US

Steve Nilsson CCIM, SIOR

952 897 7899

steve.nilsson@colliers.com

Erik Nordsrom

952 897 7885

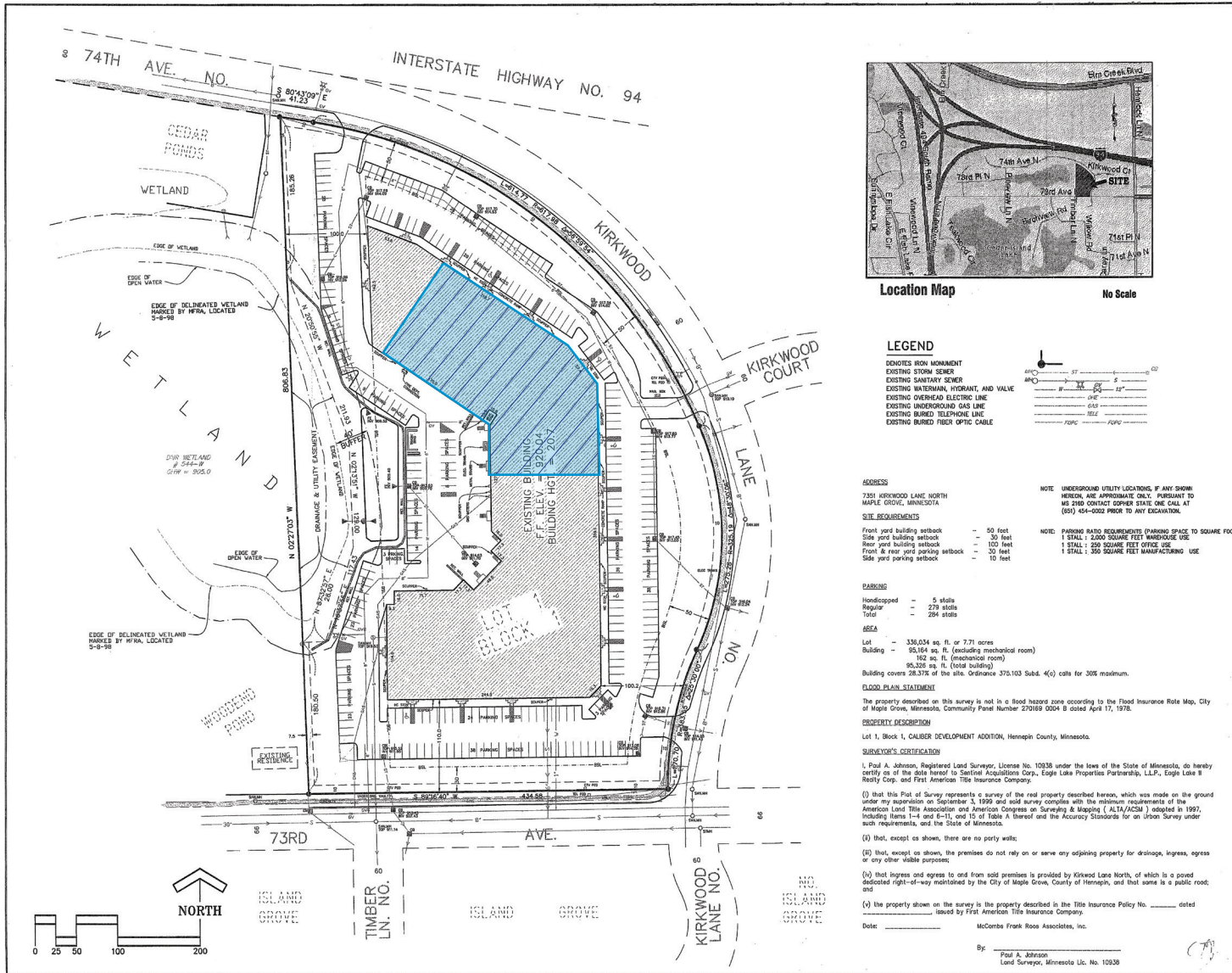
erik.nordstrom@colliers.com

SITE SURVEY >

Eagle Lake Business Center III | 7351 Kirkwood Lane North | Maple Grove, MN



Accelerating success.



CONTACT US >

Steve Nilsson CCIM SIOR

952 897 7899

steve.nilsson@colliers.com

Erik Nordstrom

952 897 7885

erik.nordstrom@colliers.com