

±1.8 ACRES LAND FOR SALE/DEVELOPMENT

HIGHWAY 101 @ CALIBER RIDGE

1455 HWY. 101, GREER, SOUTH CAROLINA 29651



- ±1.8 Acre
- Signalized corner
- All utilities
- Subdividable
- Zoned C-3/City of Greer
- Tax Map #5-24-00-118.00 (Spartanburg County)
- **SALE PRICE: \$1,275,000**

Daytime Employment⁽²⁰¹⁶⁾

	3-MILE	5-MILE
POPULATION	15,960	41,432

Demographics ⁽²⁰¹⁶⁾	3-MILE	5-MILE
2016 POPULATION	7,831	45,994
HOUSEHOLDS	2,901	17,300
AVERAGE HH INCOME	\$56,882	\$60,807



14,900 SC HWY 101
93,700 I-85

FRANK HAMMOND, CCIM, CPM

864 527 5451 DIRECT

864 297 4950 MAIN

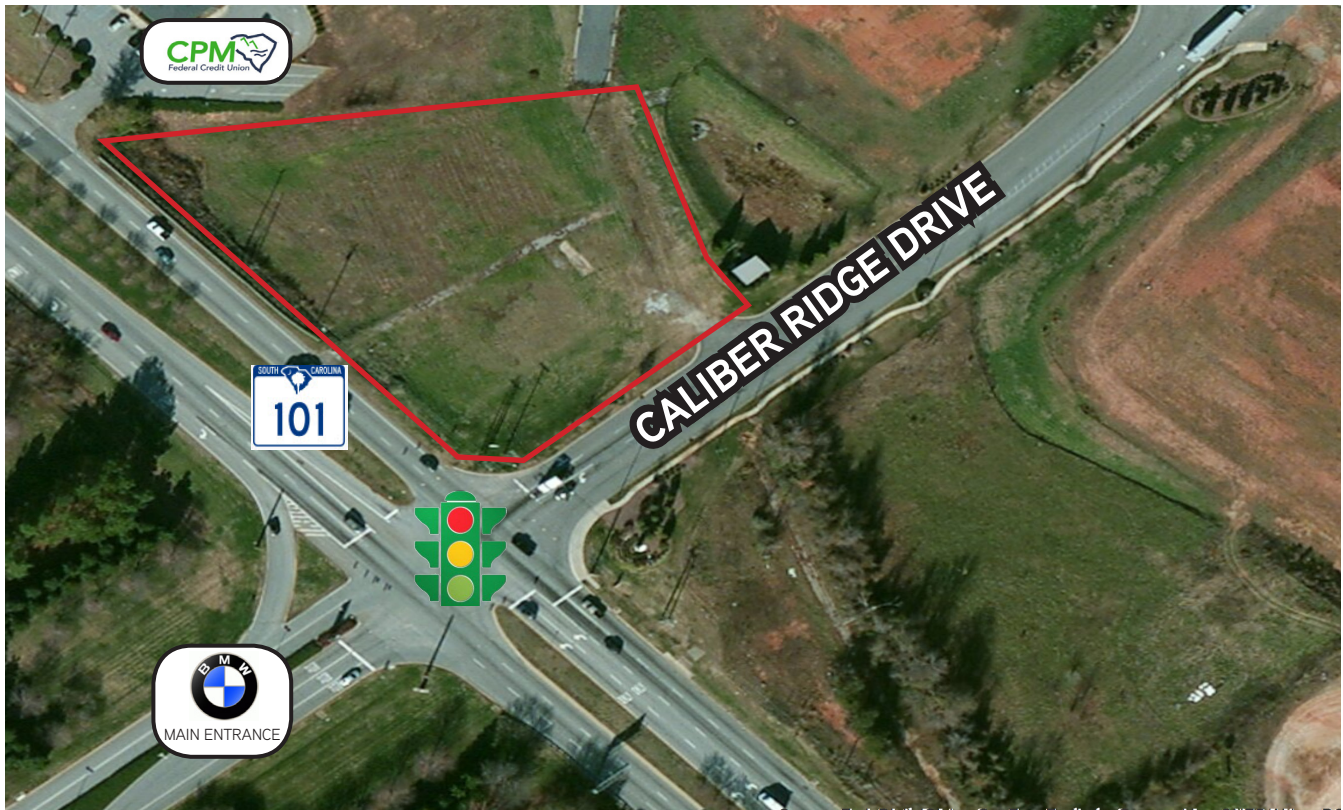
frank.hammond@colliers.com

COLLIERS INTERNATIONAL
55 E. Camperdown Way, Suite 200
Greenville, South Carolina 29601
www.colliers.com/southcarolina

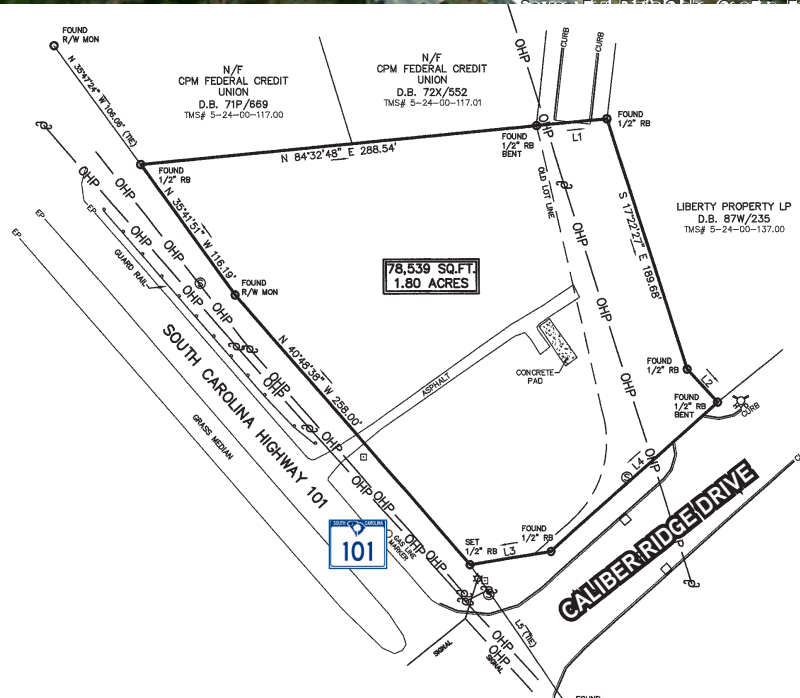
±1.8 ACRES LAND FOR SALE/DEVELOPMENT

Highway 101 @ Caliber Ridge

1455 HIGHWAY 101 GREER, SOUTH CAROLINA 29651



SITE PLAN



This document has been prepared by Colliers International for advertising and general information only. Colliers International makes no guarantees, representations or warranties of any kind, expressed or implied, regarding the information including, but not limited to, warranties of content, accuracy and reliability. Any interested party should undertake their own inquiries as to the accuracy of the information. Colliers International excludes unequivocally all inferred or implied terms, conditions and warranties arising out of this document and excludes all liability for loss and damages arising there from. This publication is the copyrighted property of Colliers International and/or its licensor(s). ©2016. All rights reserved.