

FOR LEASE > OFFICE SPACE



# 4211 Corporate Center

4211 Alderwood Mall Blvd., Lynnwood, WA 98036



## Availabilities

- > Suite 103 - 1,341 RSF (available 8/1/18)
- > Suite 202 - 1,803 RSF (available 9/1/18)
- > Suite 206 - 1,009 RSF (available 8/1/18)

## Features

- > Amenities within walking distance
- > Excellent access to I-405 and I-5
- > 4/1,000 SF parking ratio

## Rate

- > \$17.75/RSF/YR, NNN
- > NNNs = \$9.22/RSF/YR



DEREK HEED  
425 453 3133  
BELLEVUE, WA  
derek.heed@colliers.com

GREGG RIVA  
425 453 3132  
BELLEVUE, WA  
gregg.riva@colliers.com

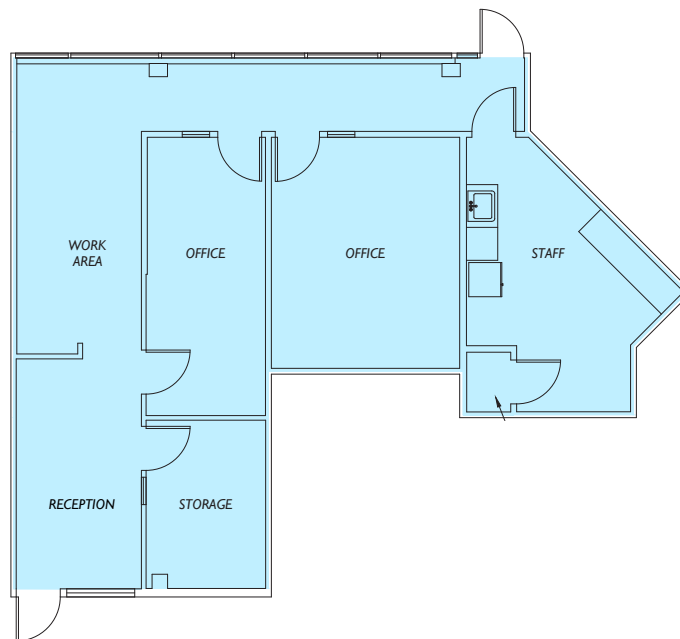


COLLIERS INTERNATIONAL  
11225 SE 6th Street, Suite 240  
Bellevue, WA 98004  
425 453 4545 | www.colliers.com

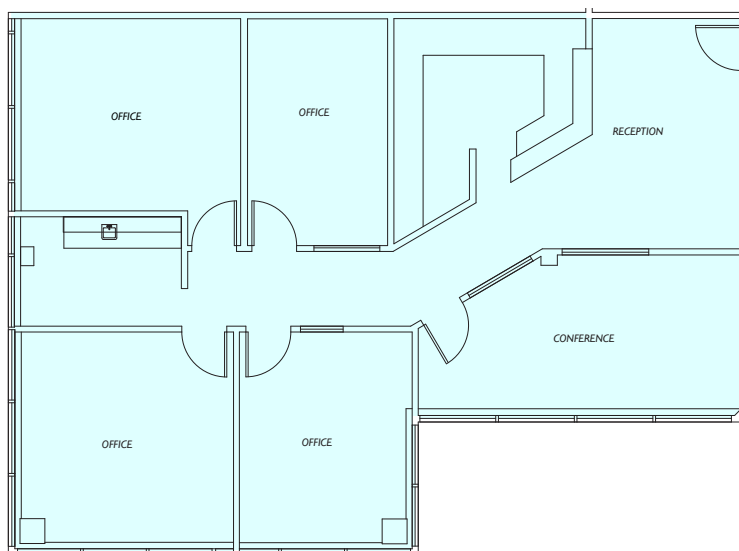
# 4211 CORPORATE CENTER

## Floor Plans

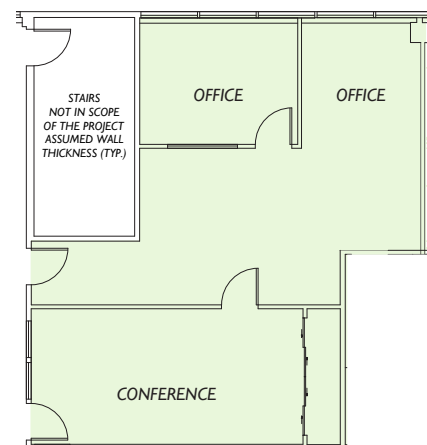
Suite 103 - 1,341 RSF



Suite 202 - 1,803 RSF



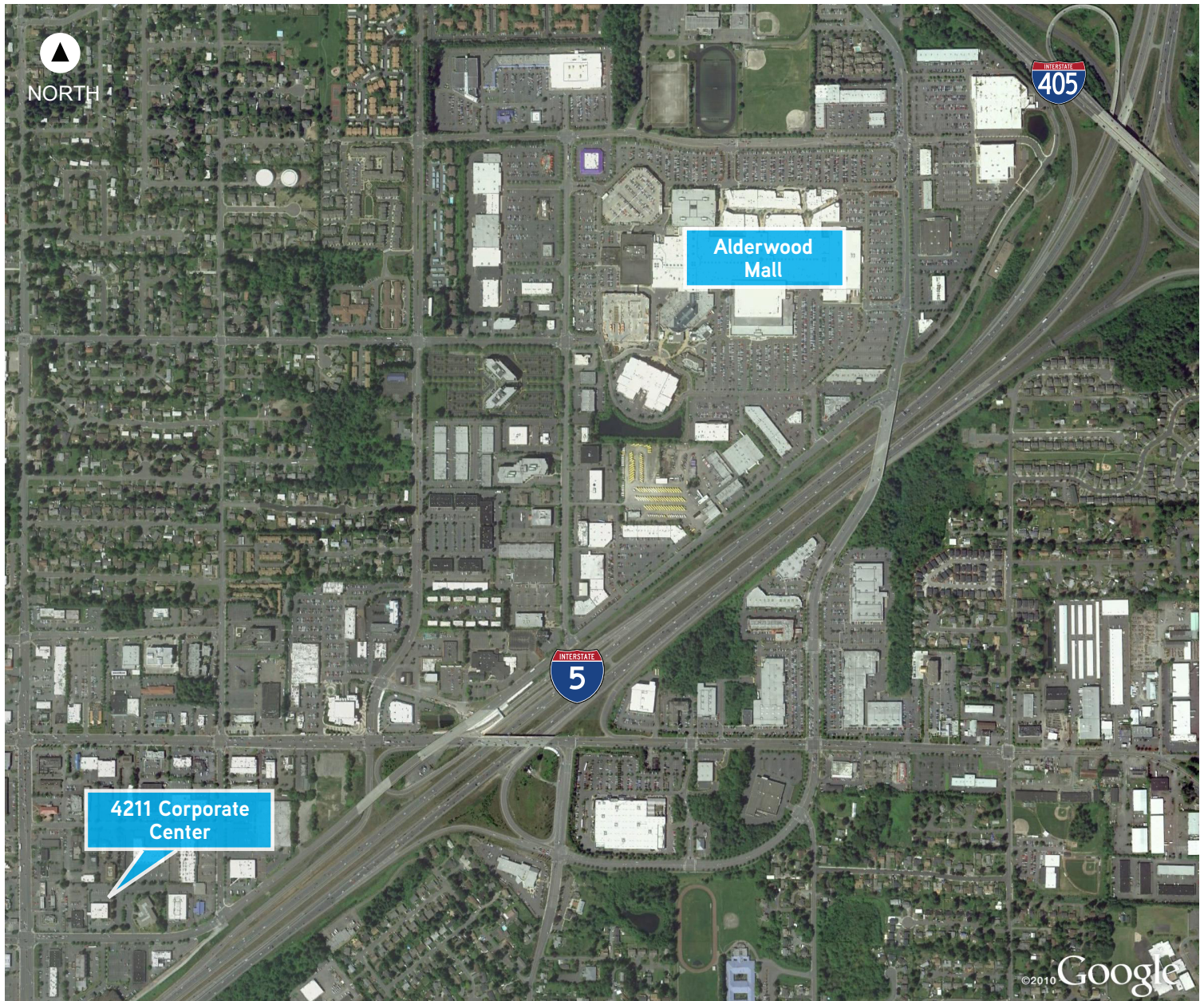
Suite 206 - 1,009 RSF





# 4211 CORPORATE CENTER

Location



DEREK HEED  
425 453 3133  
BELLEVUE, WA  
[derek.heed@colliers.com](mailto:derek.heed@colliers.com)

GREGG RIVA  
425 453 3132  
BELLEVUE, WA  
[gregg.riva@colliers.com](mailto:gregg.riva@colliers.com)

COLLIERS INTERNATIONAL  
11225 SE 6th Street, Suite 240  
Bellevue, WA 98004  
[www.colliers.com](http://www.colliers.com)

This document has been prepared by Colliers International for advertising and general information only. Colliers International makes no guarantees, representations or warranties of any kind, expressed or implied, regarding the information including, but not limited to, warranties of content, accuracy and reliability. Any interested party should undertake their own inquiries as to the accuracy of the information. Colliers International excludes unequivocally all inferred or implied terms, conditions and warranties arising out of this document and excludes all liability for loss and damages arising there from. This publication is the copyrighted property of Colliers International and /or its licensor(s). © 2018. All rights reserved.

