



Colliers



For Lease

801-823 N Central Ave. Wood Dale, IL 60191

Contact us:

John D’Orazio

+1 847 384 2823

john.dorazio@colliers.com

Jonathan Kohn

+1 847 698 8279

jonathan.kohn@colliers.com

Tommy Karnig

+1 224 306 7699

tommy.karnig@colliers.com

Colliers

6250 N River Road

Suite 11-100

Rosemont, IL 60018

Two units available for Lease

(Units 801 & 807 can be combined for a total of 6,333 SF)

Unit 801

- Unit Size: 2,933 SF
- Office Size: +-700 SF
- Ceiling Height: 16’
- Loading: 1 Drive in Door (12x14)
- Asking Price: \$14.75 MG
- Available: Immediately

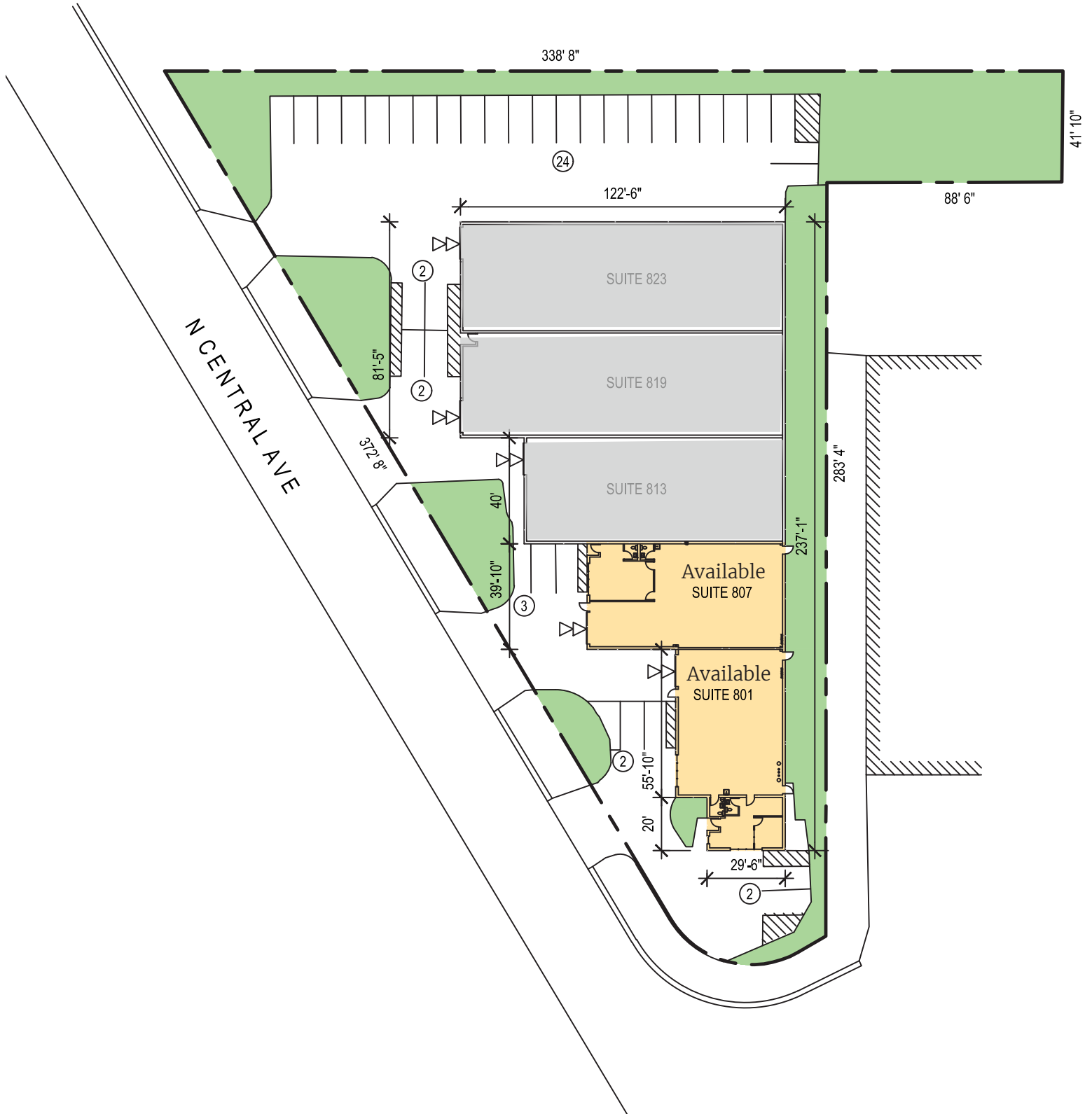
Unit 807

- Unit Size: 3,400 SF
- Office Size: +-500 SF
- Ceiling Height: 16’
- Loading: 1 Drive in Door (12x14)
- Asking Price: \$14.75 MG
- Available: 6/1/2026

Accelerating success.

Property Drawings

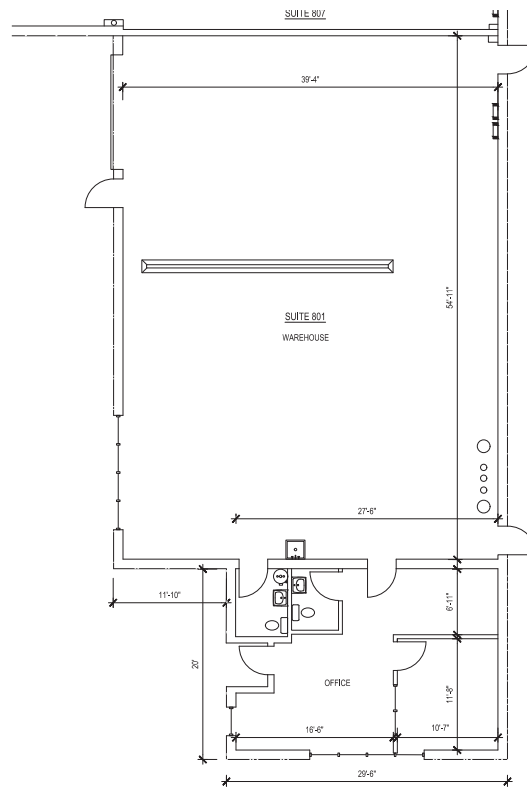
Site Plan



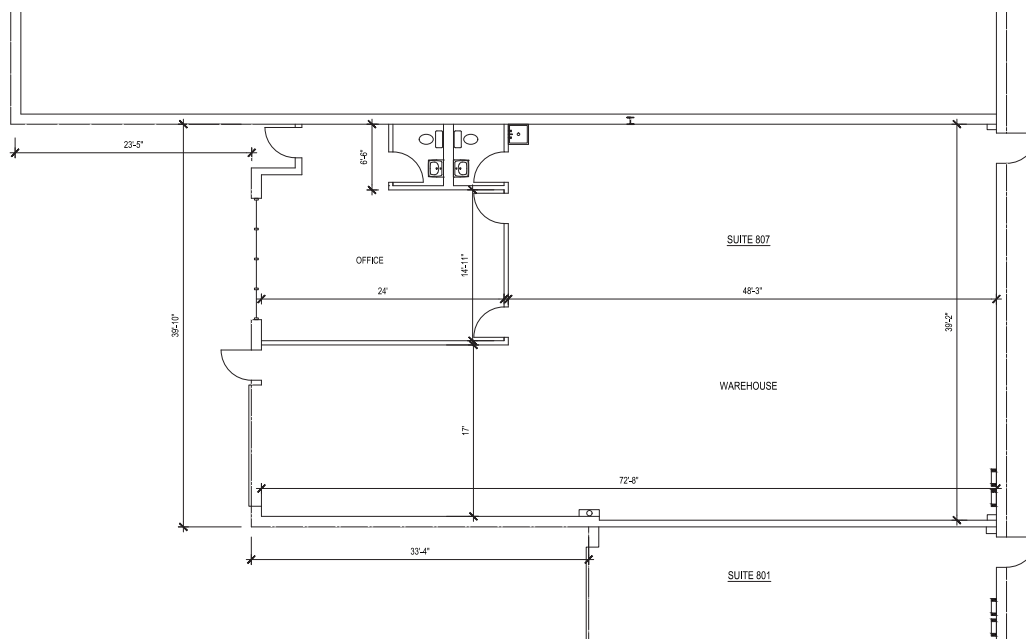
Property Drawings

Floor Plan - Suite 801

* Units 801 & 807 can be combined for a total of 6,333 SF



Floor Plan - Suite 807

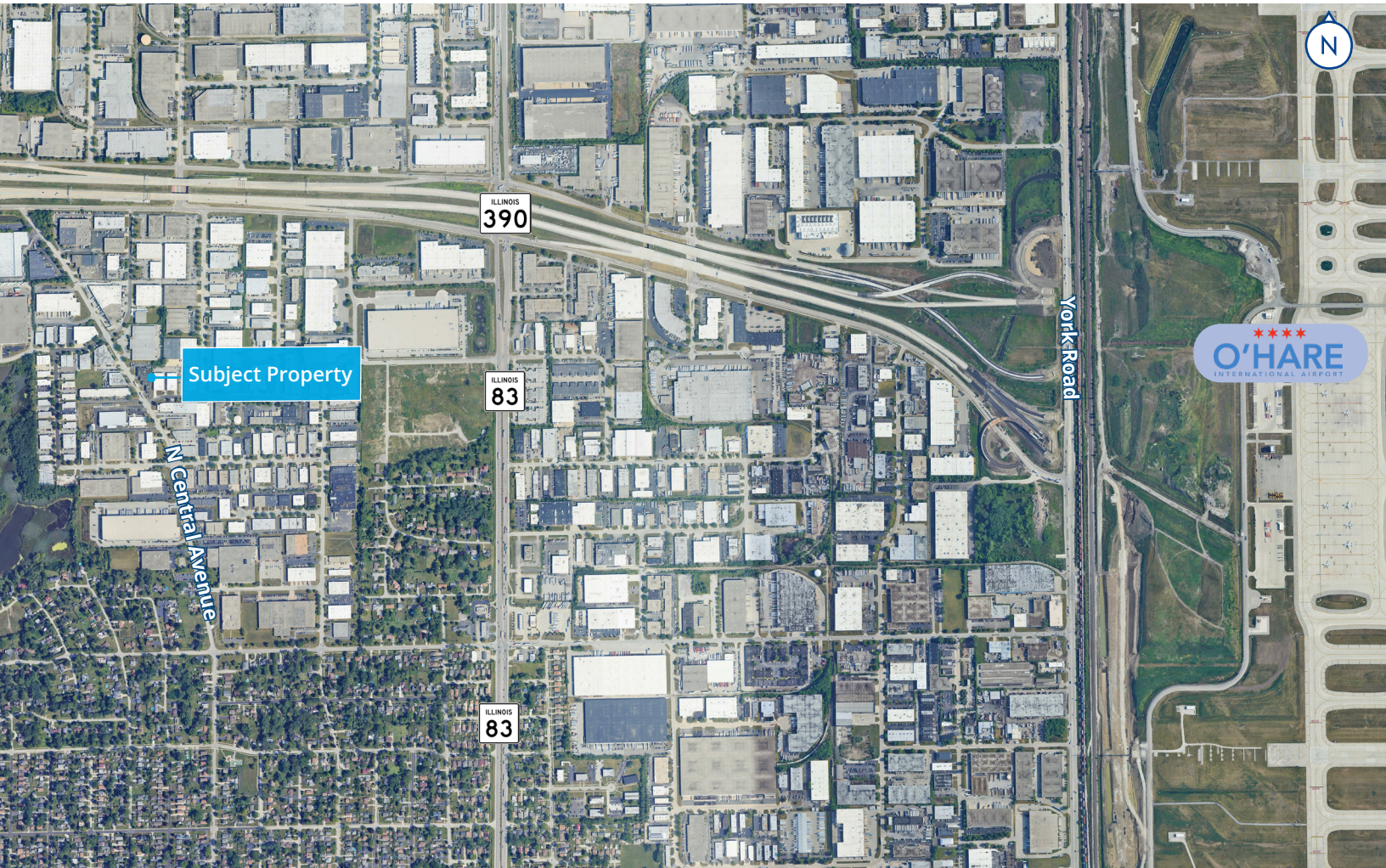


Property Gallery



Property Location

801-823 N Central Ave., Wood Dale



This document/email has been prepared by Colliers for advertising and general information only. Colliers makes no guarantees, representations or warranties of any kind, expressed or implied, regarding the information including, but not limited to, warranties of content, accuracy and reliability. Any interested party should undertake their own inquiries as to the accuracy of the information. Colliers excludes unequivocally all inferred or implied terms, conditions and warranties arising out of this document and excludes all liability for loss and damages arising there from. This publication is the copyrighted property of Colliers and /or its licensor(s). © 2026. All rights reserved. This communication is not intended to cause or induce breach of an existing listing agreement.