

# FOR LEASE > RETAIL SPACE

# LIGHTHOUSE PLAZA

4340 Leavitt Road, Lorain, Ohio 44053

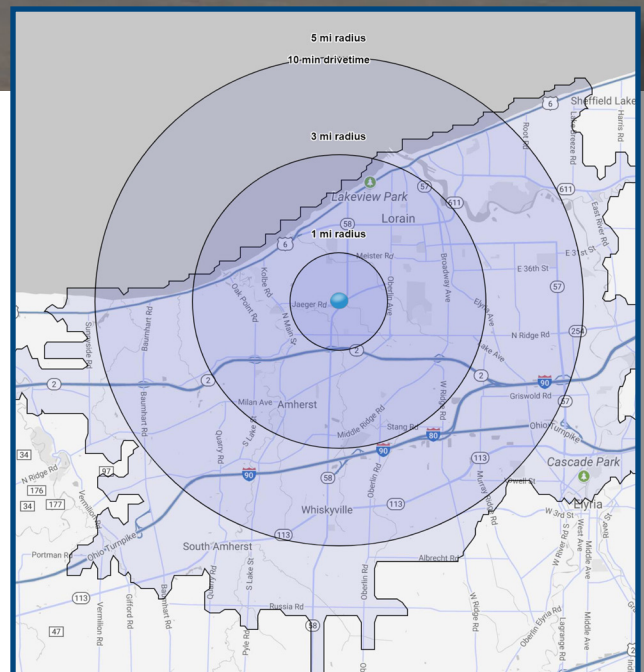
Colliers  
INTERNATIONAL



## PROPERTY HIGHLIGHTS

- > 34,312 SF retail strip center
- > 2,000 SF available for lease
- > Traffic Count: 19,280 N. Leavitt Road
- > Local Merchants: Home Depot, Wal-Mart, Kohl's

DEMOGRAPHICS	1 mile	3 mile	5 mile
Total Population	9,184	56,007	89,130
Total Daytime Employees	3,702	19,874	35,464
Average Household Income	\$67,863	\$59,225	\$58,376



PETER GREALIS  
+1 216 239 5118  
peter.grealis@colliers.com

COLLIERS INTERNATIONAL  
200 Public Square | Suite 1200  
Cleveland, OH 44114  
www.colliers.com/ohio



# SITE AERIAL

Colliers  
INTERNATIONAL



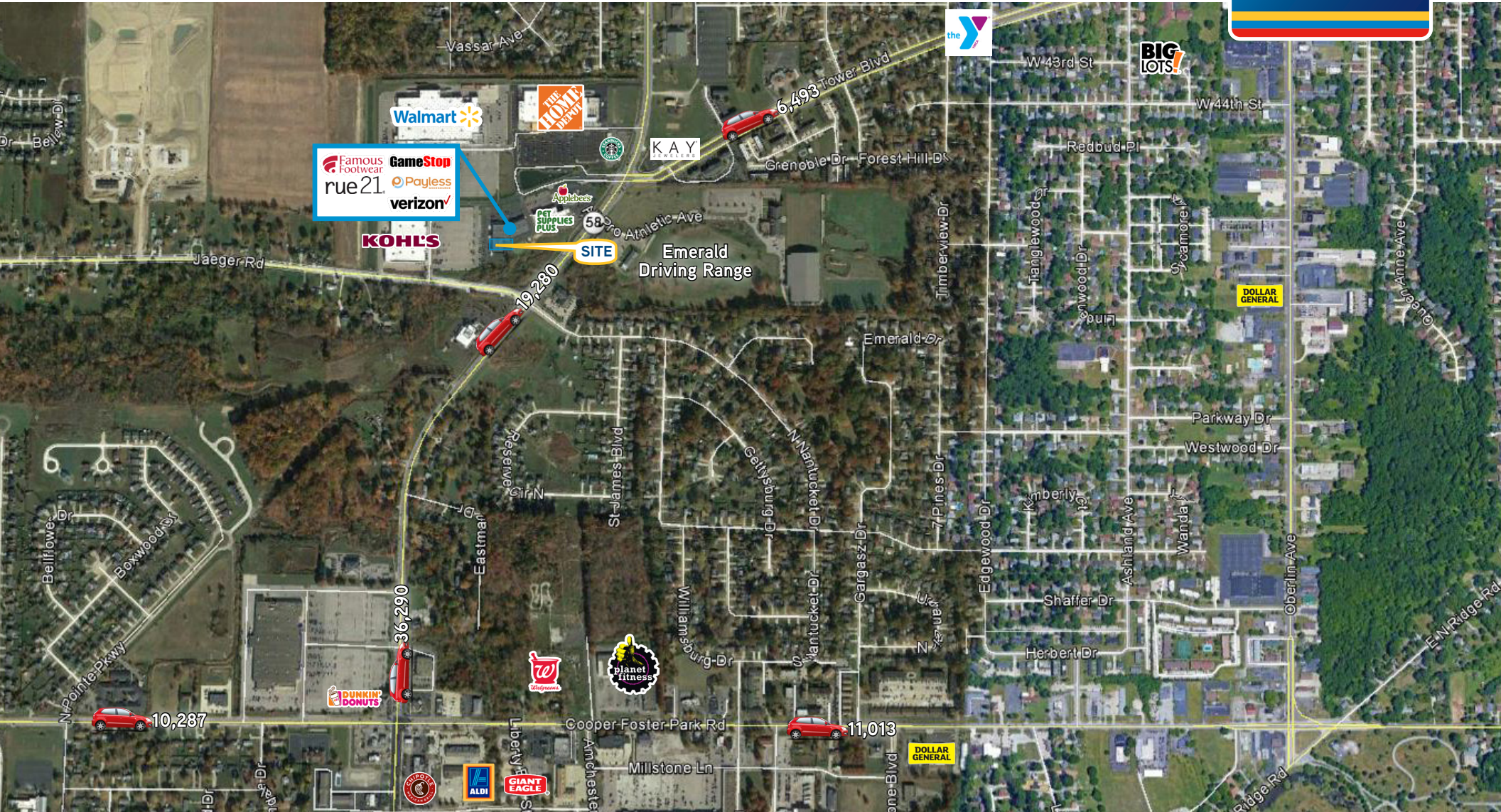
PETER GREALIS  
+1 216 239 5118  
peter.grealis@colliers.com

COLLIERS INTERNATIONAL  
200 Public Square | Suite 1200  
Cleveland, OH 44114  
www.colliers.com/ohio

The information contained herein was obtained from sources believed reliable; however, Colliers International makes no guarantees, warranties, or representations as to the completeness or accuracy thereof. The presentation of this property is submitted subject to errors, omissions, change of price or conditions prior to sale or lease, or withdrawal without notice.



# MARKET AERIAL



PETER GREALIS  
+1 216 239 5118  
peter.grealis@colliers.com

**COLLIERS INTERNATIONAL**  
200 Public Square | Suite 1200  
Cleveland, OH 44114  
[www.colliers.com/ohio](http://www.colliers.com/ohio)



# DEMOGRAPHIC REPORT

4340 N Leavitt Rd

Lorain, OH 44053

1 mi radius

3 mi radius

5 mi radius

10 min  
drivetime

**POPULATION**

2017 Estimated Population	9,184	56,007	89,130	117,416
2022 Projected Population	9,317	58,611	93,273	122,433
2010 Census Population	8,751	56,198	89,902	118,675
2000 Census Population	7,808	58,532	95,420	125,080
Projected Annual Growth 2017 to 2022	0.3%	0.9%	0.9%	0.9%
Historical Annual Growth 2000 to 2017	1.0%	-0.3%	-0.4%	-0.4%
2017 Median Age	42.4	40	39.7	40

**HOUSEHOLDS**

2017 Estimated Households	4,072	23,325	37,014	49,223
2022 Projected Households	4,202	24,753	39,270	52,049
2010 Census Households	3,764	22,540	35,966	47,879
2000 Census Households	3,271	22,855	36,861	48,515
Projected Annual Growth 2017 to 2022	0.6%	1.2%	1.2%	1.1%
Historical Annual Growth 2000 to 2017	1.4%	0.1%	-	0.1%

**RACE AND ETHNICITY**

2017 Estimated White	76.3%	71.5%	73.2%	75.0%
2017 Estimated Black or African American	12.8%	15.9%	14.2%	13.6%
2017 Estimated Asian or Pacific Islander	0.9%	0.6%	0.6%	0.8%
2017 Estimated American Indian or Native Alaskan	0.2%	0.4%	0.4%	0.4%
2017 Estimated Other Races	9.7%	11.6%	11.6%	10.2%
2017 Estimated Hispanic	17.7%	19.2%	20.8%	17.7%

**INCOME**

2017 Estimated Average Household Income	\$67,863	\$59,225	\$58,376	\$60,065
2017 Estimated Median Household Income	\$59,324	\$48,614	\$47,130	\$48,126
2017 Estimated Per Capita Income	\$30,122	\$24,745	\$24,302	\$25,248

**EDUCATION  
(AGE 25+)**

2017 Estimated Elementary (Grade Level 0 to 8)	2.0%	3.7%	3.9%	3.6%
2017 Estimated Some High School (Grade Level 9 to 11)	5.5%	8.9%	9.7%	9.2%
2017 Estimated High School Graduate	39.3%	35.6%	36.0%	36.1%
2017 Estimated Some College	24.1%	25.6%	25.0%	25.0%
2017 Estimated Associates Degree Only	12.2%	10.1%	10.0%	10.0%
2017 Estimated Bachelors Degree Only	11.3%	10.6%	10.0%	10.2%
2017 Estimated Graduate Degree	5.6%	5.5%	5.3%	5.9%

**BUSINESS**

2017 Estimated Total Businesses	383	1,787	2,942	4,151
2017 Estimated Total Employees	3,702	19,874	35,464	50,286
2017 Estimated Employee Population per Business	9.7	11.1	12.1	12.1
2017 Estimated Residential Population per Business	24.0	31.3	30.3	28.3