

FOR LEASE > OFFICE SPACE



14300 Metcalf Avenue

OVERLAND PARK, KANSAS



Property Features

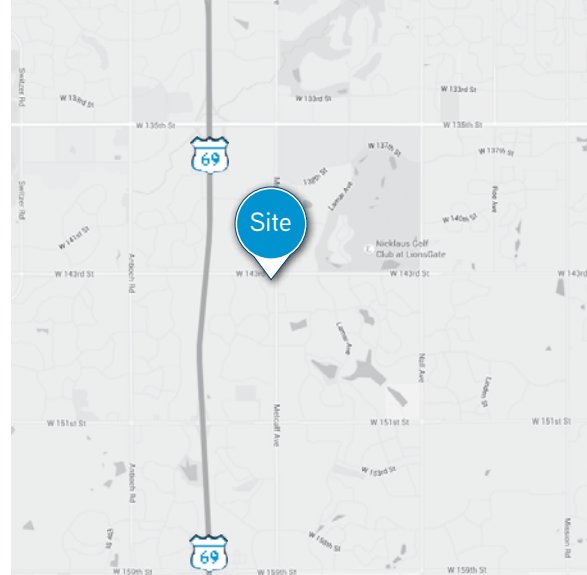
- > Excellent location at the corner of 143rd and Metcalf
- > "Class A" building
- > Built in 2003
- > Exterior and monument signage available
- > 4,161 RSF located at the entrance of the building
- > Lease rate: \$23.50, full service

MATT STOVER
+1 816 556 1116
KANSAS CITY, MO
matt.stover@colliers.com

COLLIERS INTERNATIONAL
4520 Main Street, Suite 1000
Kansas City, MO 64111
www.colliers.com

14300 Metcalf Avenue > For Lease

AERIAL



Contact Us

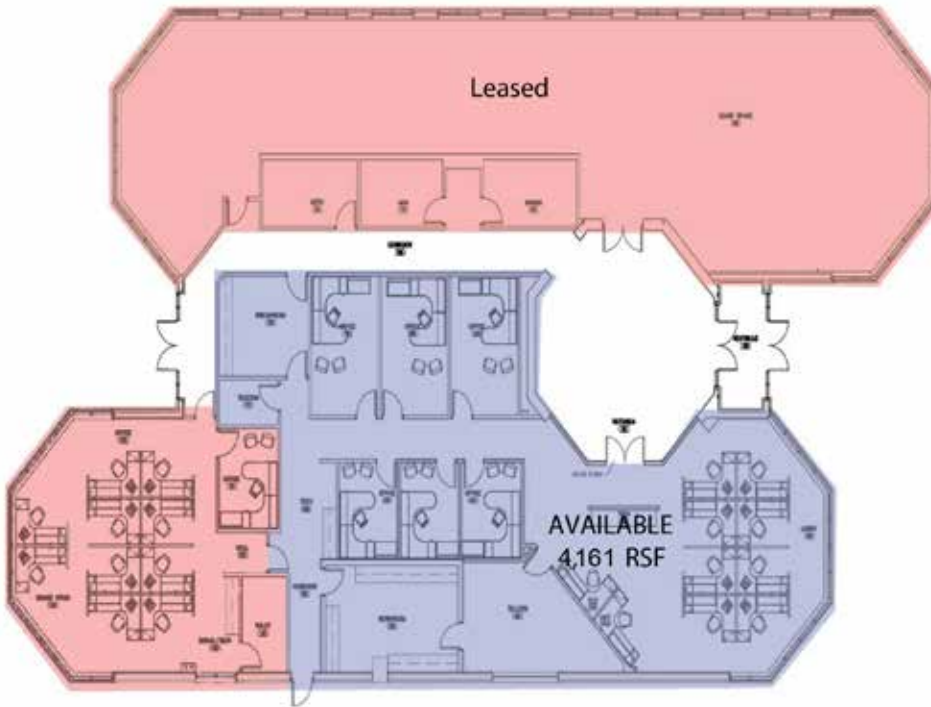
MATT STOVER

+1 816 556 1116

KANSAS CITY, MO

matt.stover@colliers.com

FLOOR PLAN



COLLIERS INTERNATIONAL
4520 Main Street, Suite 1000
Kansas City, MO 64111

www.collier.com

This document has been prepared by Colliers International for advertising and general information only. Colliers International makes no guarantees, representations or warranties of any kind, expressed or implied, regarding the information including, but not limited to, warranties of content, accuracy and reliability. Any interested party should undertake their own inquiries as to the accuracy of the information. Colliers International excludes unequivocally all inferred or implied terms, conditions and warranties arising out of this document and excludes all liability for loss and damages arising there from. This publication is the copyrighted property of Colliers International and/or its licensor(s). ©2016. All rights reserved.

