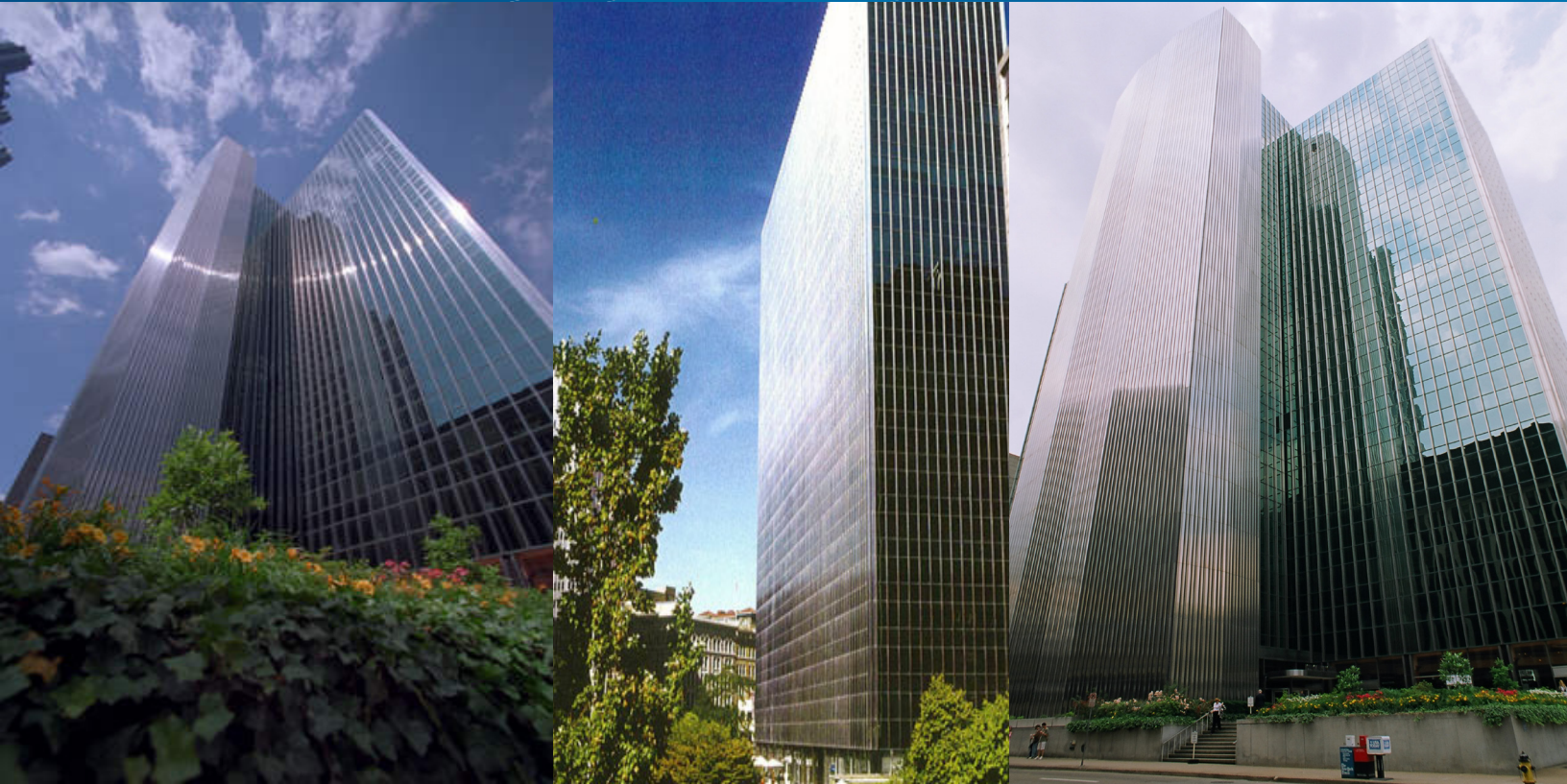


FOR LEASE > CLASS A OFFICE SPACE



444 Liberty Avenue

(FOUR GATEWAY CENTER)
PITTSBURGH, PA 15222



444 Liberty Avenue > Property Highlights

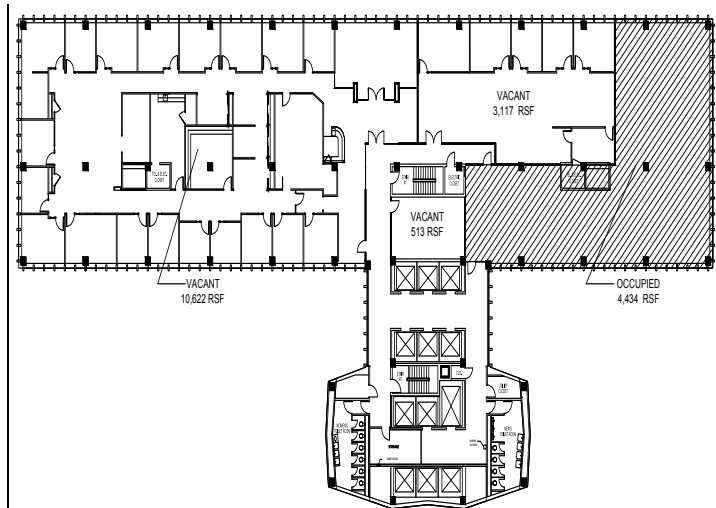
- > **1,000 SF - 14,393 SF contiguous space**
- > 24 hour security service
- > Property management on site
- > Planned full renovation of the building lobby and lower level
- > Highly efficient foot print only 8% common area factor for full floor users
- > Park like courtyard located adjacent to building
- > Abundant underground onsite parking
- > Conveniently located with easy access to I-279; I-79; I-376; Route 28; and 20 minutes from Pittsburgh International Airport
- > Numerous amenities within the building and nearby
- > Free courtesy shuttle service for tenants within the Downtown area
- > Close proximity to the "new" PAT North Shore Connector

PAUL HORAN
FOUNDING PRINCIPAL | PITTSBURGH
OFFICE BROKERAGE
412 321 4200 | EXT. 205
paul.horan@colliers.com

EDWARD LAWRENCE ^{MBA}
PRINCIPAL | PITTSBURGH
OFFICE BROKERAGE
412 321 4200 | EXT. 213
ed.lawrence@colliers.com

COLLIERS INTERNATIONAL | PITTSBURGH
Two Gateway Center
603 Stanwix Street, Suite 125
Pittsburgh, PA 15222
www.colliers.com/pittsburgh

10th Floor Availability



Example of Reception area



Example of Conference Area



Example of Reception area



Courtyard

Spectacular Views



Contact Us

PAUL HORAN
FOUNDING PRINCIPAL | PITTSBURGH
OFFICE BROKERAGE
412 321 4200 EXT. 205
paul.horan@colliers.com

EDWARD LAWRENCE MBA
PRINCIPAL | PITTSBURGH
OFFICE BROKERAGE
412 321 4200 EXT. 213
ed.lawrence@colliers.com

COLLIERS INTERNATIONAL | PITTSBURGH
Two Gateway Center, Suite 125
603 Stanwix Street
Pittsburgh, PA 15222
www.colliers.com/pittsburgh

The information contained herein has been given to us by the owner of the property or other sources we deem reliable. We have no reason to doubt its accuracy, but we do not guarantee it. All information should be verified prior to purchase or lease.

