



Colliers

Accelerating success.

FOR LEASE

Asking Rate:

\$12.50 PSF
NNN

Square-footage:

17,890

Contact us:

Wade Smith, SIOR

Brokerage | Arkansas
+1 214 924 1605
wade.smith@ar.colliers.com

John Rowland

Brokerage | Arkansas
+1 501 804 2514
john.rowland@ar.colliers.com

Price Reduction!

2209 Hawks Landing

Fayetteville, Arkansas

Property Features

- 3,040 SF of Mezzanine Office Area
- 1 Dock & 2 Roll-up Doors
- Steel Frame, Built in 2016
- 100% HVAC in Building
- 3-Phase Power
- 1.05 Acre Site

Discover the flexibility and convenience of 2209 Hawks Landing in Fayetteville. This 17,890 SF modern warehouse features a mezzanine office, break area, 100% HVAC, and 3-phase power. Building includes efficient loading with one dock and two roll-up doors.

Copyright © 2025 Colliers International.

Information herein has been obtained from sources deemed reliable, however its accuracy cannot be guaranteed. The user is required to conduct their own due diligence and verification.



Colliers

Accelerating success.

3503 S 55th Street, Suite 200
Rogers, AR 72758
P: +1 479 636 9000
colliers.com

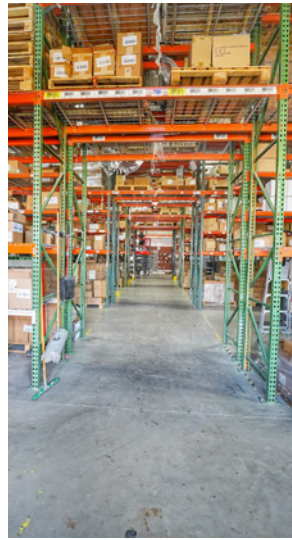
Hawks Landing



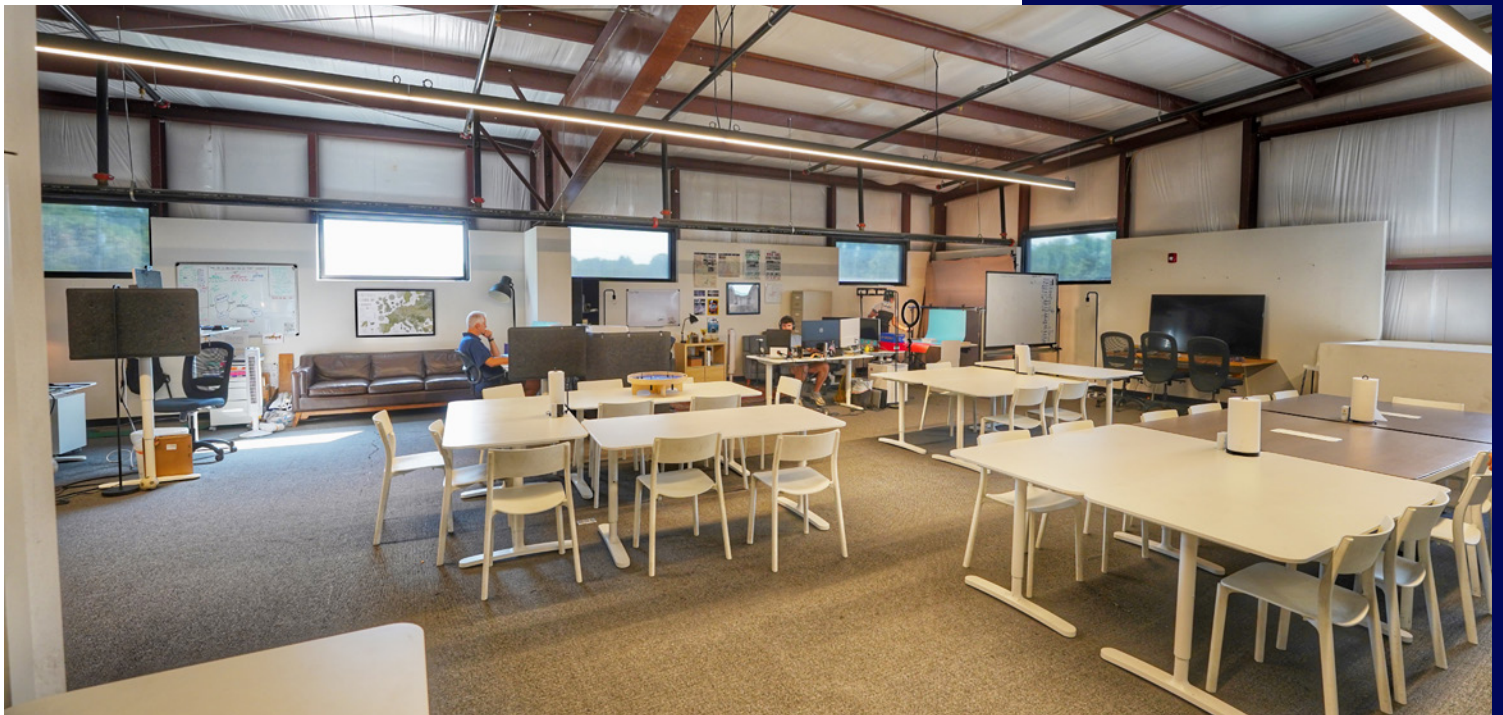
Property Photos



Interior | Racks



Interior | Mezzanine



Location



Demographics

	1 Mile	3 Mile	5 Mile
Population (2025)	5,899	45,698	147,183
Projected Population (2030)	5,596	47,185	151,243
Households (2025)	2,685	19,478	56,501
Average HH Income (2025)	\$119,442		

Contact us:

Wade Smith, SIOR

Brokerage | Arkansas
 +1 214 924 1605
 wade.smith@ar.colliers.com

John Rowland

Brokerage | Arkansas
 +1 501 804 2514
 john.rowland@ar.colliers.com



Accelerating success.

3503 S 55th Street, Suite 200
 Rogers, AR 72758
 P: +1 479 636 9000
 colliers.com

Copyright © 2025 Colliers International.

Information herein has been obtained from sources deemed reliable, however its accuracy cannot be guaranteed. The user is required to conduct their own due diligence and verification.