

# BOUTIQUE BRICK & TIMBER BUILDING FOR LEASE IN JACKSON SQUARE

# 832

SANSOME STREET

## THE BUILDING

832 Sansome Street is a five-story, class B quality, brick and timber property strategically located in San Francisco's coveted Jackson Square District. The building was built in 1912 and renovated in 1979. The exterior of the building features a classic brick-and-timber design with subtle detailing and exposed fire escapes. The landmark building is a charming and iconic presence in one of the city's most beautiful neighborhoods.

The location is ideal and puts tenants and employees close to all neighborhood amenities, including transit. Numerous transportation stops are within a few steps, including the Battery and Broadway station with numerous lines.



For More Information Contact:

**Jim Sobel**

LIC: 00965752  
415 288 7804  
jim.sobel@colliers.com

**Brendon Kane**

LIC: 01884552  
415 288 7868  
brendon.kane@colliers.com

**Andrew Bland**

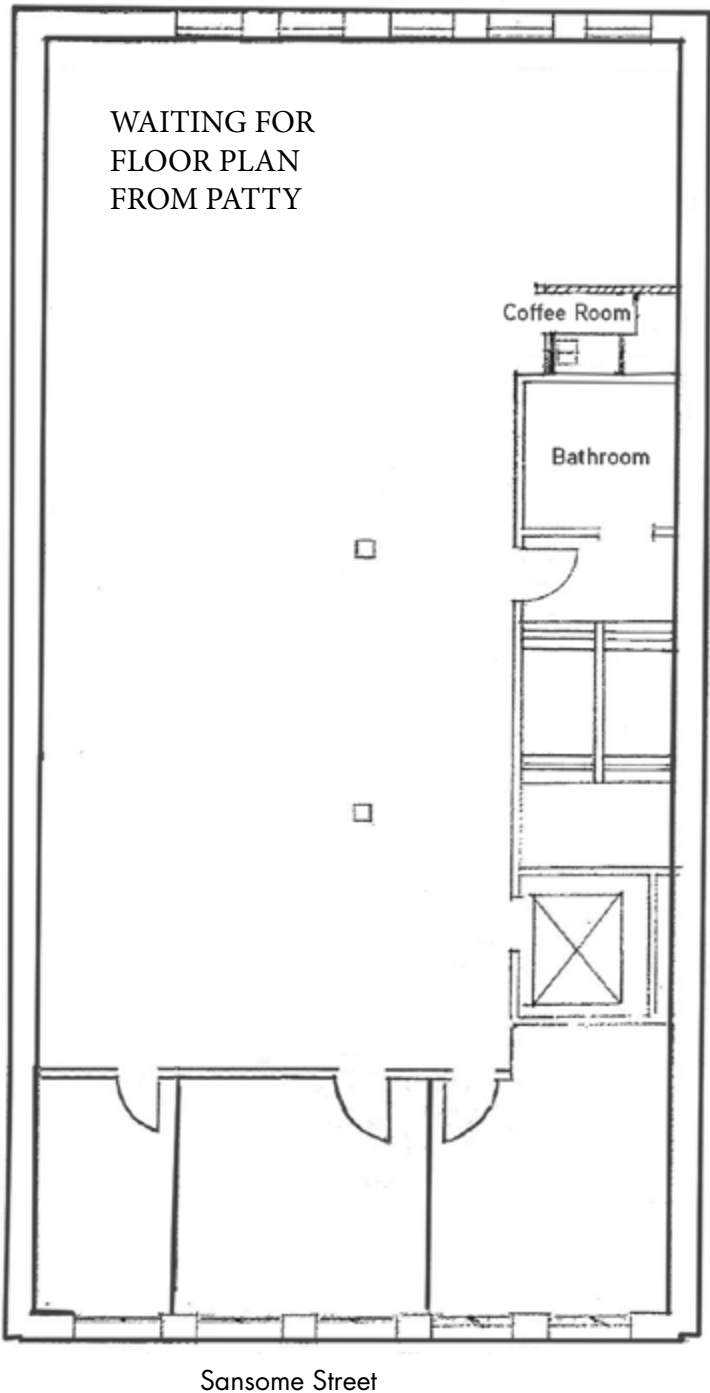
LIC: 02088083  
415 510 4719  
andrew.bland@colliers.com



**Colliers International**

101 Second Street, 11th Floor  
San Francisco, CA 94105  
415 788 3100

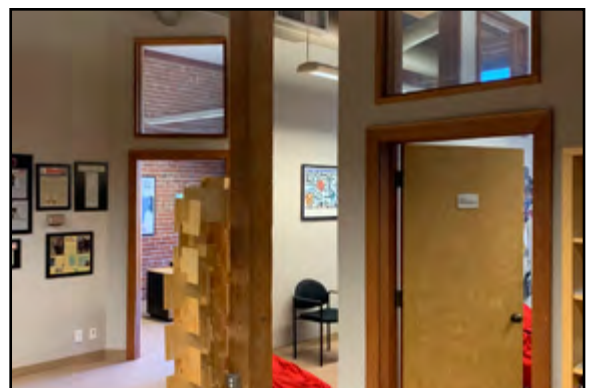
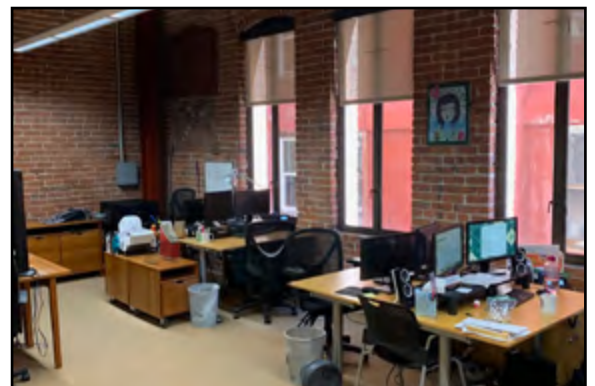
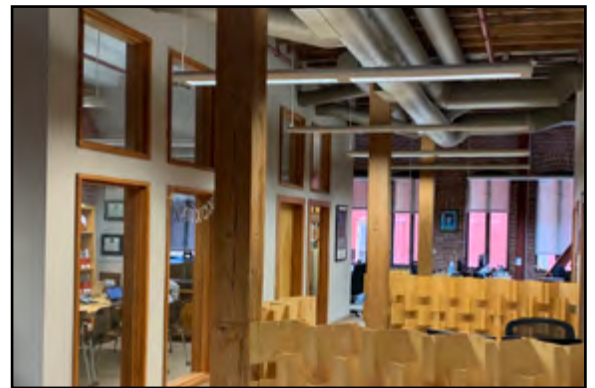
## Available Space



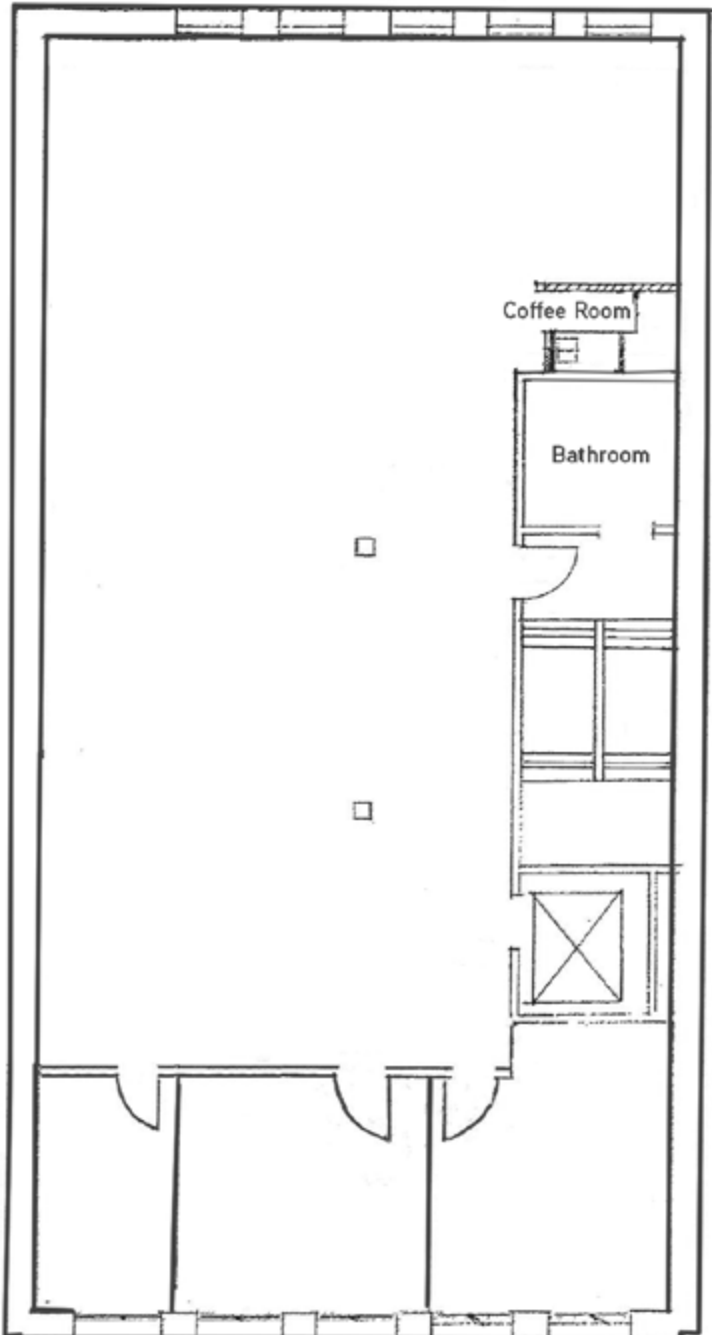
## Second Floor

2,500 RSF

Available Now



## Available Space



Sansome Street

## Third Floor

2,441 RSF

Available Now

