

FOR LEASE > RETAIL SPACE

"Marty Gras" Shopping Center

NWC SHAW AND MARTY, FRESNO, CALIFORNIA



Property Summary

- > Location: Northwest corner of Shaw and Marty, Fresno, California, behind Applebee's, east of Walmart.
- > Sizes: 2,050 SF Available
- > Rent: **REDUCED: \$0.95 NNN**
- > Zoning: RMX, City of Fresno
- > Customer Traffic:
 - Shaw Avenue: 42,200 cars per day
 - Marty Avenue: 12,173 cars per day

> Customer Demographics:	Population	Avg. HH Income	Daytime Population
1 Mile:	16,349	\$61,647	7,429
2 Miles:	62,771	\$69,740	21,127
3 Miles:	122,695	\$74,734	34,991
4 Miles:	174,955	\$73,623	60,292
5 Miles:	224,182	\$69,510	94,360

- > Near Many National Retailers.
- > New Housing Growth.
- > Available 2018.

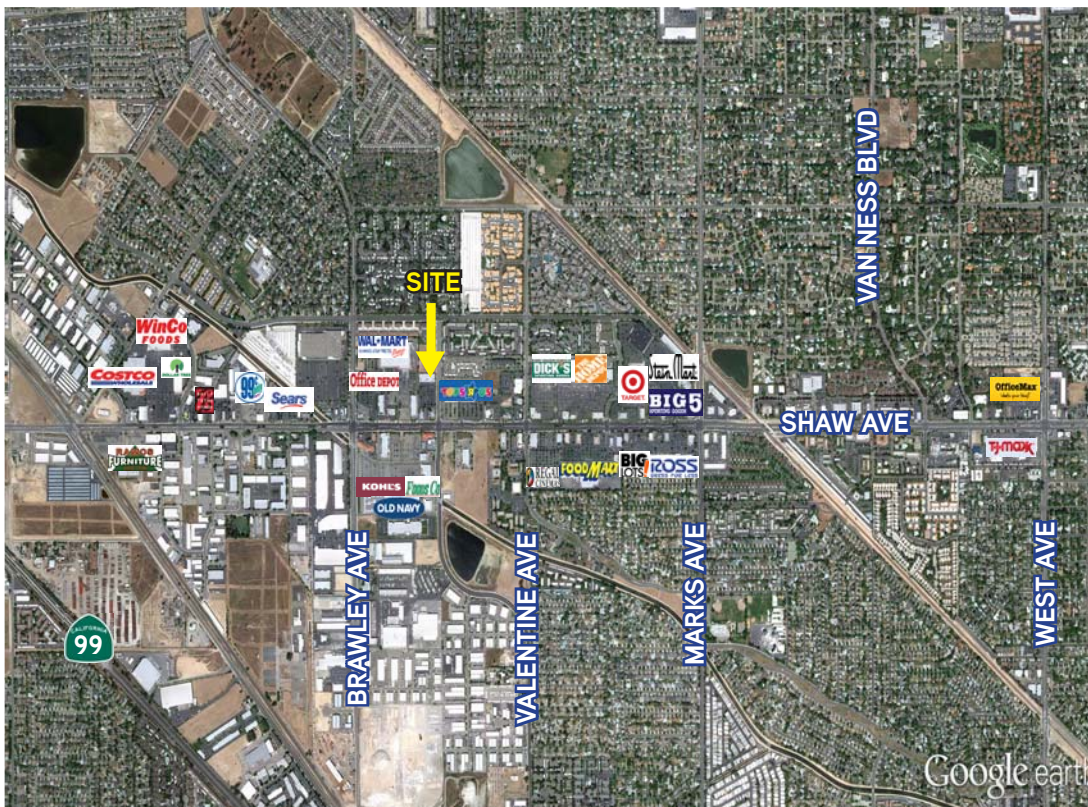
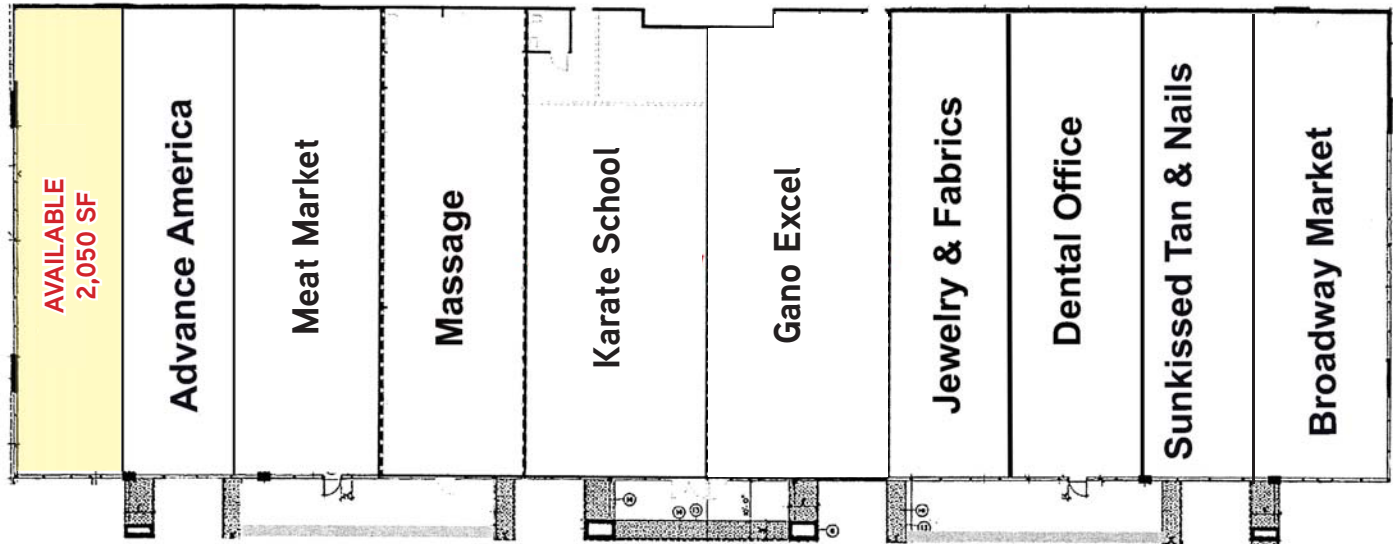


AGENT: STEVE RONTTELL
559 221 1271 | EXT. 113
FRESNO, CA
steve.ronttell@colliers.com
BRE #00932510

COLLIERS INTERNATIONAL
7485 N. Palm Avenue, #110
Fresno, CA 93711
www.colliers.com/fresno

"Marty Gras" Shopping Center > Site Plan

NWC Shaw and Marty, Fresno, California



Contact Us

AGENT: STEVE RONTOLL
559 221 1271 | EXT. 113
steve.rontell@colliers.com
BRE #00932510

COLLIERS INTERNATIONAL
7485 N. Palm Avenue, #110
Fresno, CA 93711
www.colliers.com/fresno

This document has been prepared by Colliers International for advertising and general information only. Colliers International makes no guarantees, representations or warranties of any kind, expressed or implied, regarding the information including, but not limited to, warranties of content, accuracy and reliability. Any interested party should undertake their own inquiries as to the accuracy of the information. Colliers International excludes unequivocally all inferred or implied terms, conditions and warranties arising out of this document and excludes all liability for loss and damages arising there from. This publication is the copyrighted property of Colliers International and/or its licensor(s). ©2017. All rights reserved. Owner and Broker do not warrant how long Wal-Mart will be open for business next door.

