

NORTH CALIFORNIA BOULEVARD

SUITE 260

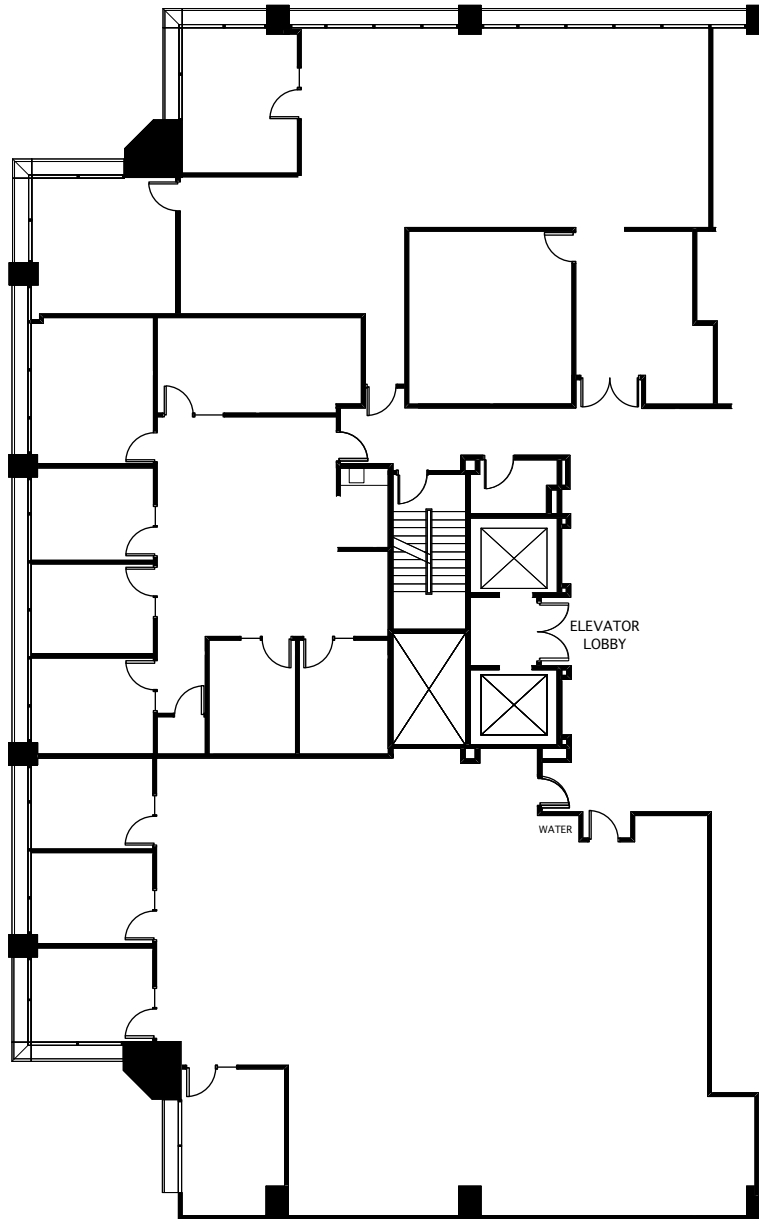
2,679 RSF

SUITE 250

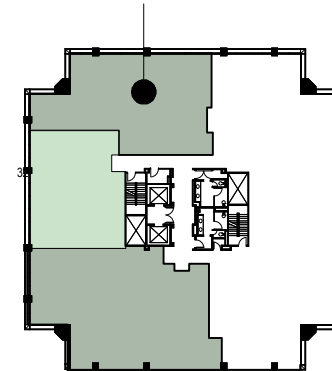
2,072RSF

SUITE 210

3,738 RSF



**SUITE FLOOR
LOCATION**



SECOND FLOOR KEY PLAN

Colliers
INTERNATIONAL

Colliers International
1850 Mount Diablo Boulevard, Suite 200
Walnut Creek, CA 94596 | United States
www.colliers.com

LEASING AGENT

Scott Ellis
(925) 279-5575

scott.ellis@colliers.com

Matt Hurd
(925) 279-5567

matt.hurd@colliers.com

**Growers
Square**

1676 N. California Blvd.
Walnut Creek, CA 94596

Second Floor

Owned by:
Growers Square, Inc.

Managed by:
CB Richard Ellis

Approximate Area Calculations
Subject To Verification:

8,489 rsf

As-built Plan To Be Verified

This information displayed while not guaranteed has been secured by sources we believe to be reliable. This information is subject to errors & omissions. Any tenant should conduct their own investigation.

Plan Revision - 2-7-18