

FOR LEASE • ±4.06 ACRE PAVED TRUCK YARD UNDER CONSTRUCTION

CONTACT BROKER FOR PRICING INFORMATION

1549 Industrial Drive • Stockton, CA



COMING SOON

**FEATURES:
FENCED, LIT, PAVED & STRIPED TRUCK YARD**

EXCLUSIVE BROKER - INDUSTRIAL SERVICES TEAM:

Ryan McShane, SIOR
Senior Vice President
(209) 475-5105
ryan.mcshane@colliers.com
CA License No. 01295796

Mike Goldstein, SIOR
Executive Managing Director
(209) 475-5106
michael.goldstein@colliers.com
CA License No. 01319234



Wes Widmer
Senior Vice President
(209) 475-5109
wes.widmer@colliers.com
CA License No. 01315686



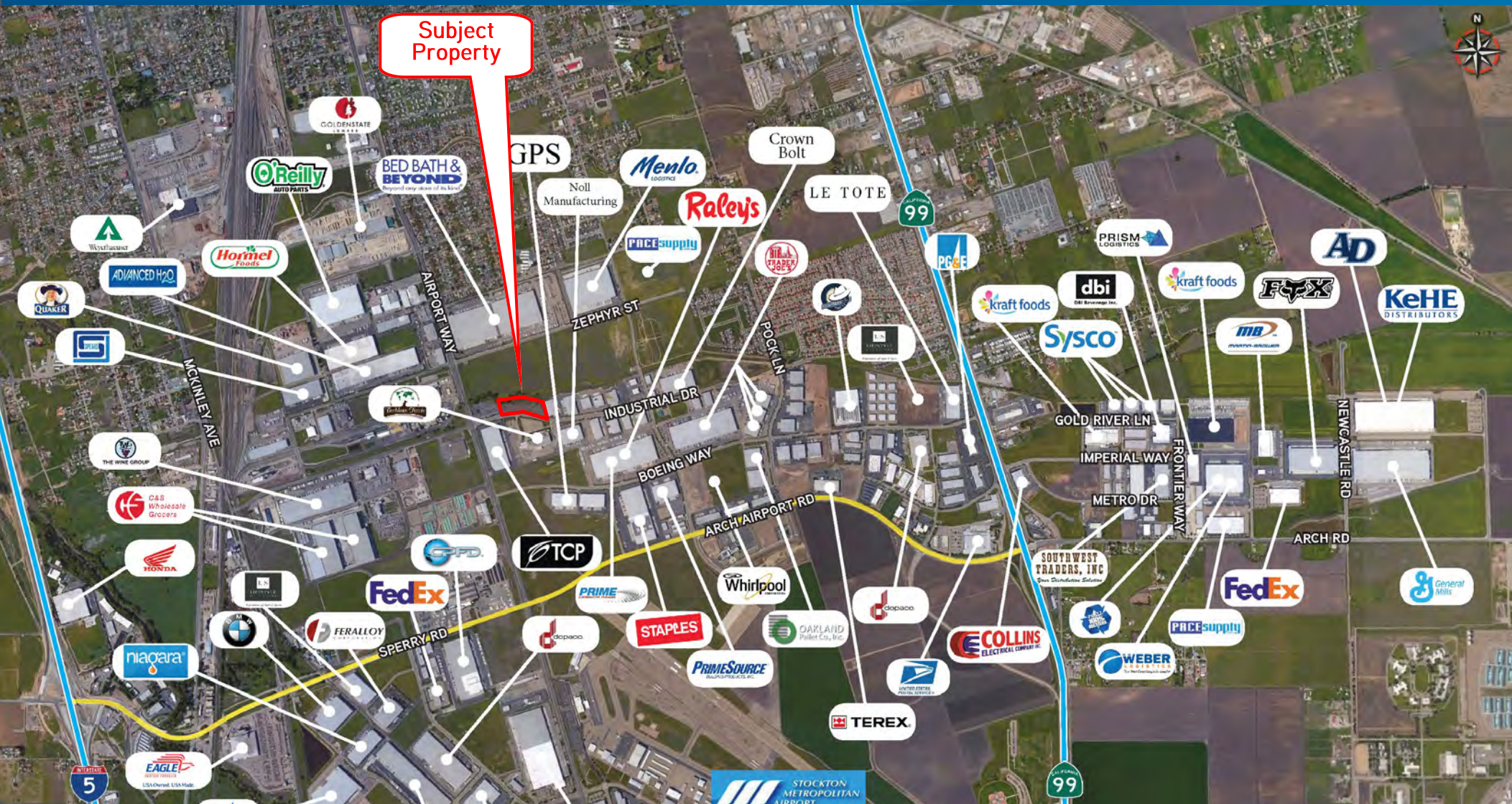
COLLIERS INTERNATIONAL
3439 Brookside Road, Suite 108
Stockton, CA USA 95219
www.colliers.com

The information furnished has been obtained from sources we deem reliable and is submitted subject to errors, omissions and changes. Although Colliers International has no reason to doubt its accuracy, we do not guarantee it. All information should be verified by the recipient prior to lease, purchase, exchange, or execution of legal documents.

FOR LEASE • ±4.06 ACRE PAVED TRUCK YARD UNDER CONSTRUCTION

CONTACT BROKER FOR PRICING INFORMATION

1549 Industrial Drive • Stockton, CA



EXCLUSIVE BROKER - INDUSTRIAL SERVICES TEAM:

Ryan McShane, SIOR
Senior Vice President
(209) 475-5105
ryan.mcshane@colliers.com
CA License No. 01295796

Mike Goldstein, SIOR
Executive Managing Director
(209) 475-5106
michael.goldstein@colliers.com
CA License No. 01319234



Wes Widmer
Senior Vice President
(209) 475-5109
wes.widmer@colliers.com
CA License No. 01315686



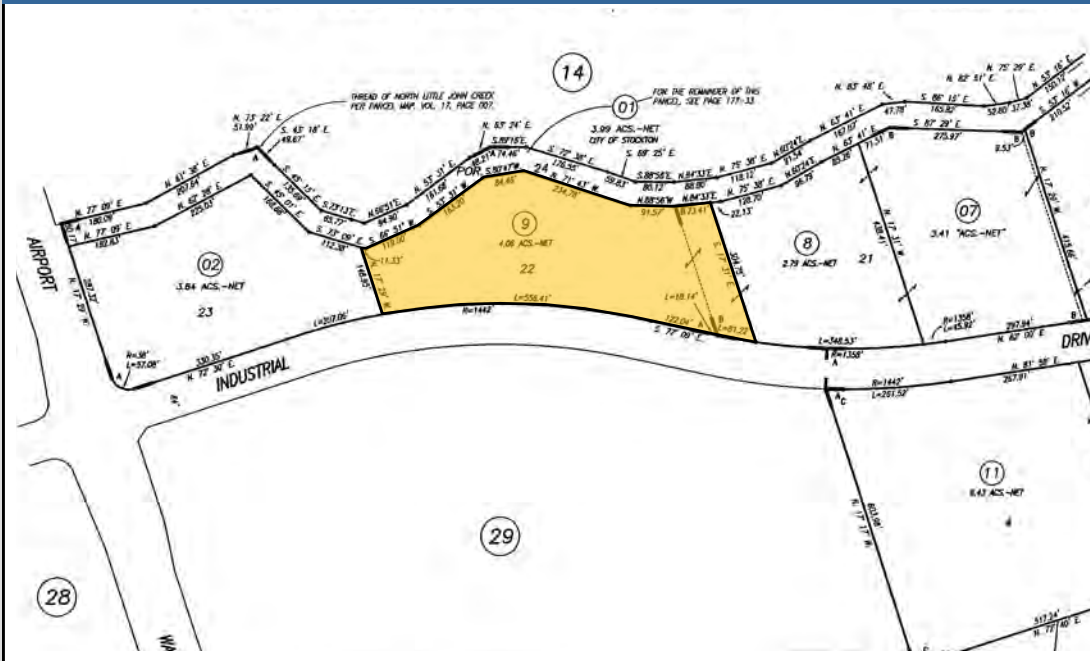
COLLIERS INTERNATIONAL
3439 Brookside Road, Suite 108
Stockton, CA USA 95219
www.colliers.com

FOR LEASE • ±4.06 ACRE PAVED TRUCK YARD UNDER CONSTRUCTION

CONTACT BROKER FOR PRICING INFORMATION

1549 Industrial Drive • Stockton, CA

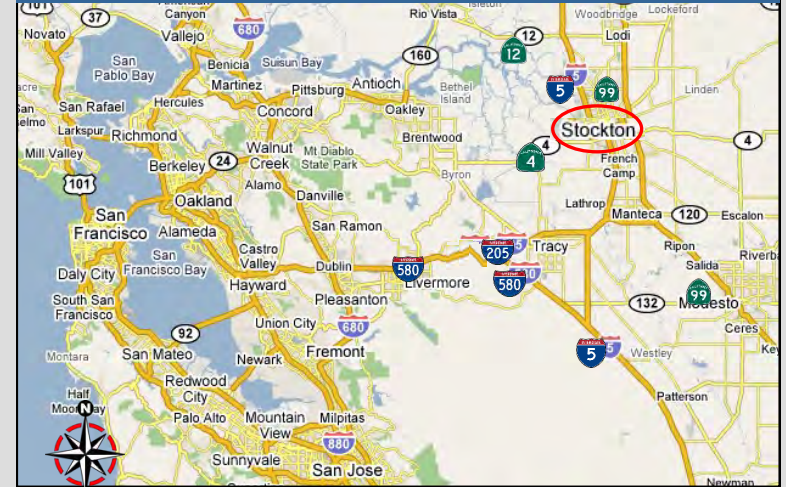
Parcel Map



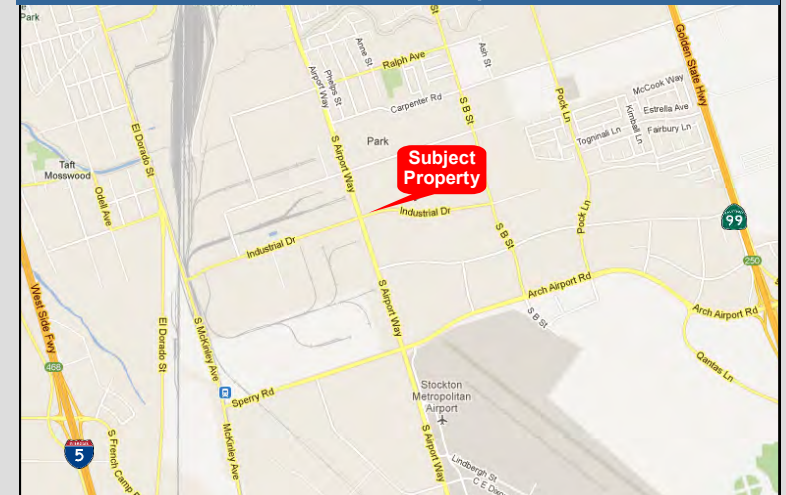
Features

- ±4.06 Acre Parcel
- APN: 177-320-09
- Zoned: IG, Industrial General
- Located near the Stockton Airport
- Excellent access to I-5 and HWY99 via the new Arch-Sperry connector
- Rare truck yard located in the heart of the Central Valley's Distribution hub. Neighboring tenants include Bed, Bath & Beyond, Trader Joe's, BMW, Raley's, The Wine Group, and C&S Wholesale Grocers. Amazon is under construction just to the north.

Regional Map



Location Map



EXCLUSIVE BROKER - INDUSTRIAL SERVICES TEAM:

Ryan McShane, SIOR
Senior Vice President
(209) 475-5105
ryan.mcshane@colliers.com
CA License No. 01295796

Mike Goldstein, SIOR
Executive Managing Director
(209) 475-5106
michael.goldstein@colliers.com
CA License No. 01319234



Wes Widmer
Senior Vice President
(209) 475-5109
wes.widmer@colliers.com
CA License No. 01315686



COLLIERS INTERNATIONAL
3439 Brookside Road, Suite 108
Stockton, CA USA 95219
www.colliers.com