

# LAND FOR SALE - EXCELLENT ROSEDALE HIGHWAY LOCATION

## 4000-4020 ROSEDALE HIGHWAY, BAKERSFIELD, CA 93308



**JOHN HALE**  
Senior Vice President & Principal  
Hale Retail Team  
Central California  
john.hale@colliers.com  
661 631 3815  
BRE License # 00870084

**STEPHEN HALE**  
Associate  
Hale Retail Team  
Central California  
stephen.hale@colliers.com  
661 631 3820  
BRE License # 01997969

**KEVIN HALE**  
Associate  
Hale Retail Team  
Central California  
kevin.hale@colliers.com  
661 631 3825  
BRE License # 02044018

**COLLIERS INTERNATIONAL**  
10000 Stockdale Highway, Suite 102  
Bakersfield, CA 93311  
661 631 3800  
www.colliers.com/bakersfield



# FOR SALE > EXCELLENT ROSEDALE HIGHWAY VISIBILITY

## PROPERTY INFORMATION & DEMOGRAPHICS

4000-4020 ROSEDALE HIGHWAY, BAKERSFIELD, CA

**4000-4020 Rosedale Highway** consists of approximately 7.36 acres of land and two (2) buildings totaling approximately 33,119 SF located at the signalized intersection of Rosedale Highway and Gibson Street. The property benefits from high traffic counts, a robust daytime population (due to surrounding hospitality, retail and industrial businesses) and its proximity to Freeway 99.

### FOR SALE

**2 Buildings**  
**Site Size**

**Approximately 33,119 SF**  
**Approximately 7.36 acres**

**PRICE: \$4,170,000 (\$13.00 PSF)**

### HIGHLIGHTS

- > Signalized intersection at Rosedale Highway and Gibson Street
- > Close proximity to Freeway 99
- > Surrounded by hospitality, retail, and industrial businesses, creating a high daytime population
- > Zoned M-3
- > Great location on Rosedale Highway (Highway 58) which is a major east/west arterial

### TRAFFIC COUNTS / DEMOGRAPHICS

Property Address	4000 & 4020 Rosedale Highway, Bakersfield, California 93308
APN	332-141-15, 17, 72 & 73
Land Size	7.36 Acres
Land zone	M-3 Heavy Industrial
Traffic Counts	Gibson St. at Rosedale Hwy. (Northbound): 3,979 AADT Rosedale Hwy at Camino Del Rio Ct: 51,075 AADT <small>2017 kerncog.com</small>

#### DEMOGRAPHICS 2017 Estimates *Alteryx, Inc.*

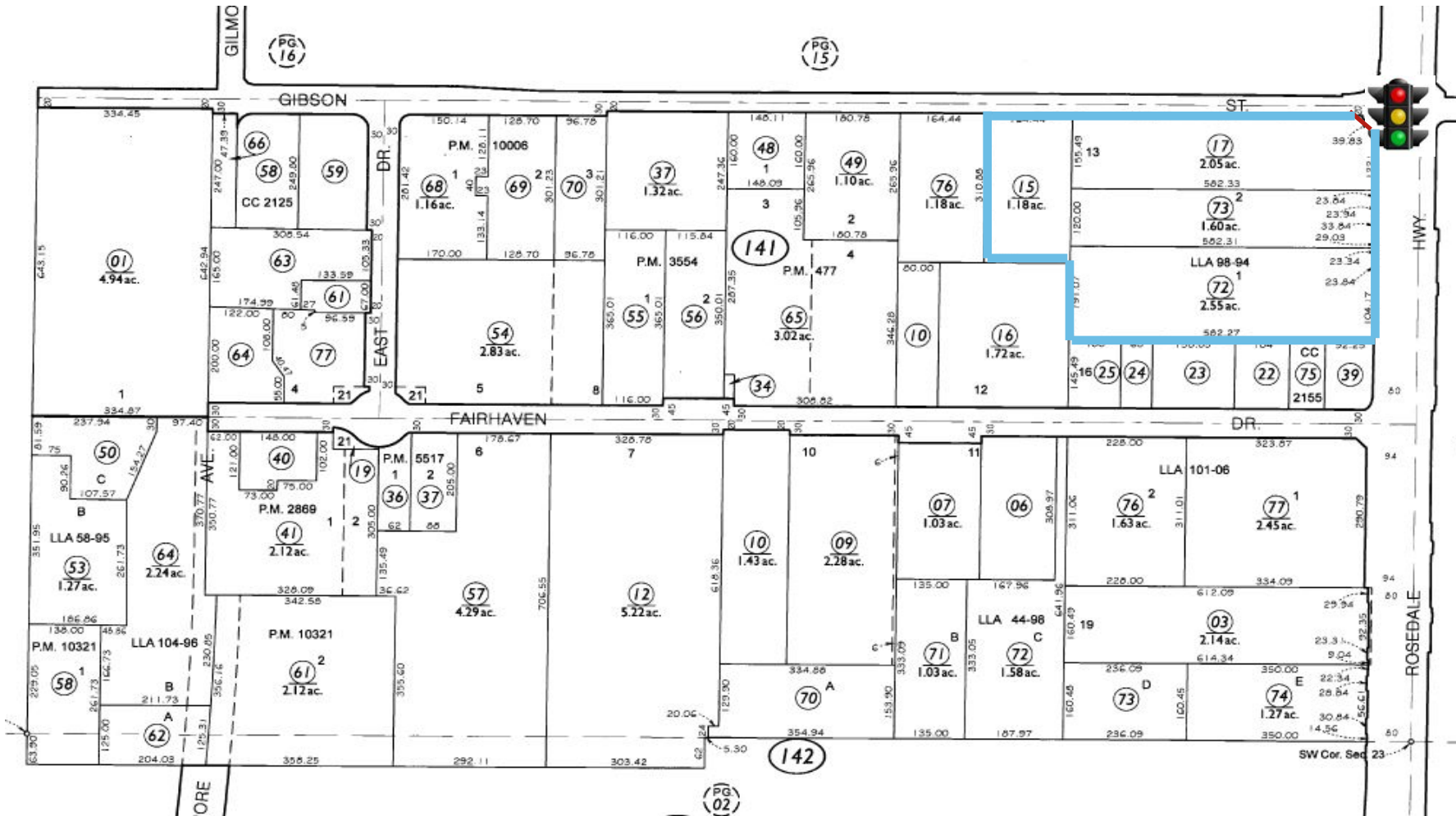
Description	1 Mile	3 Miles	5 Miles
Total Population	510	93,760	297,234
Households	223	35,937	151,515
Average HH Income	\$92,719	\$62,075	\$69,175
Daytime Population Q2 2017	7,650	71,487	127
Establishments - Total Q2 2017	530	6,122	11,058

2017 ALTERYX, INC. (Q2-2017)



# FOR SALE > EXCELLENT ROSEDALE HIGHWAY VISIBILITY APN MAP

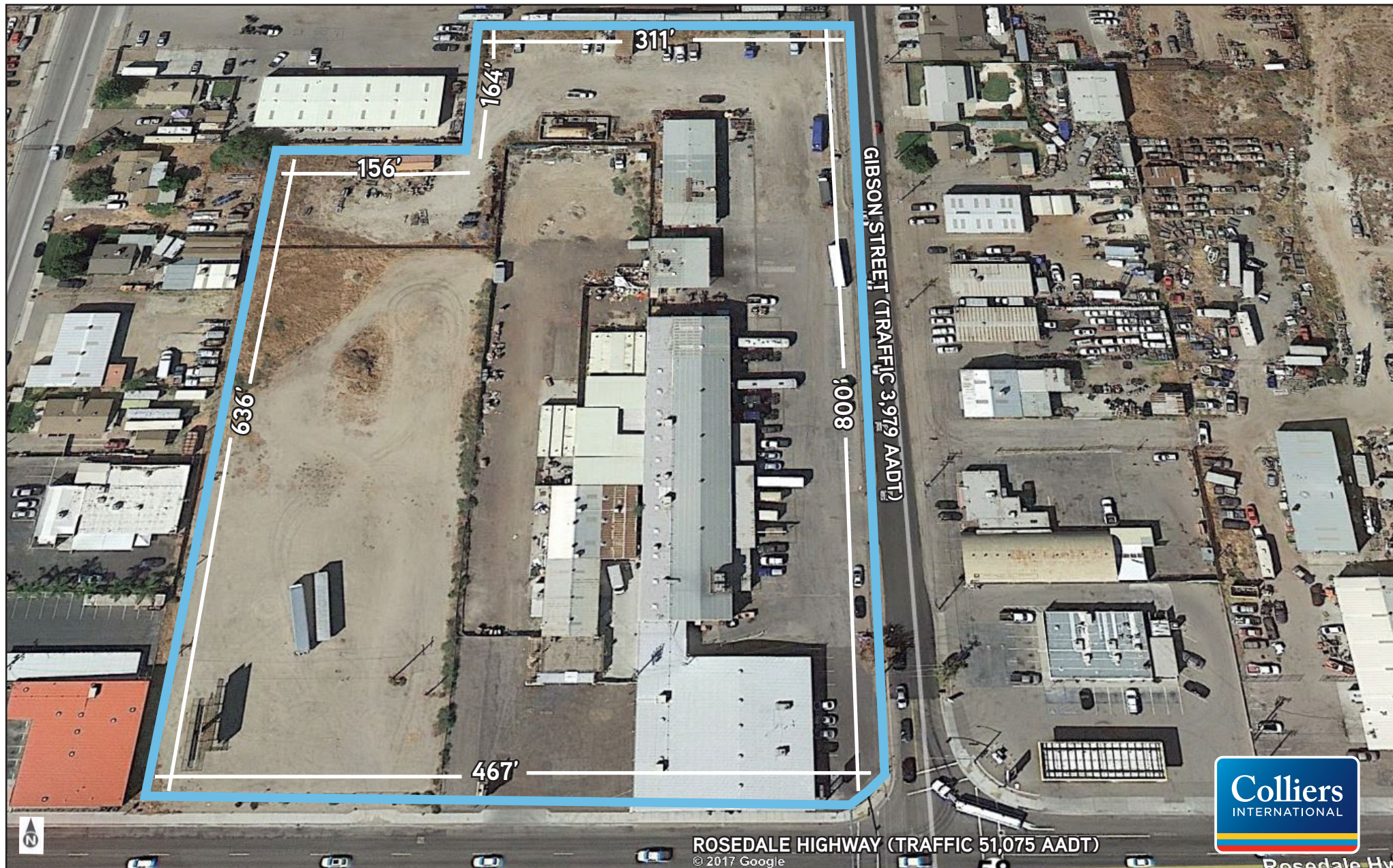
4000-4020 ROSEDALE HIGHWAY, BAKERSFIELD, CA





FOR SALE > EXCELLENT ROSEDALE HIGHWAY VISIBILITY  
PROPERTY AERIAL

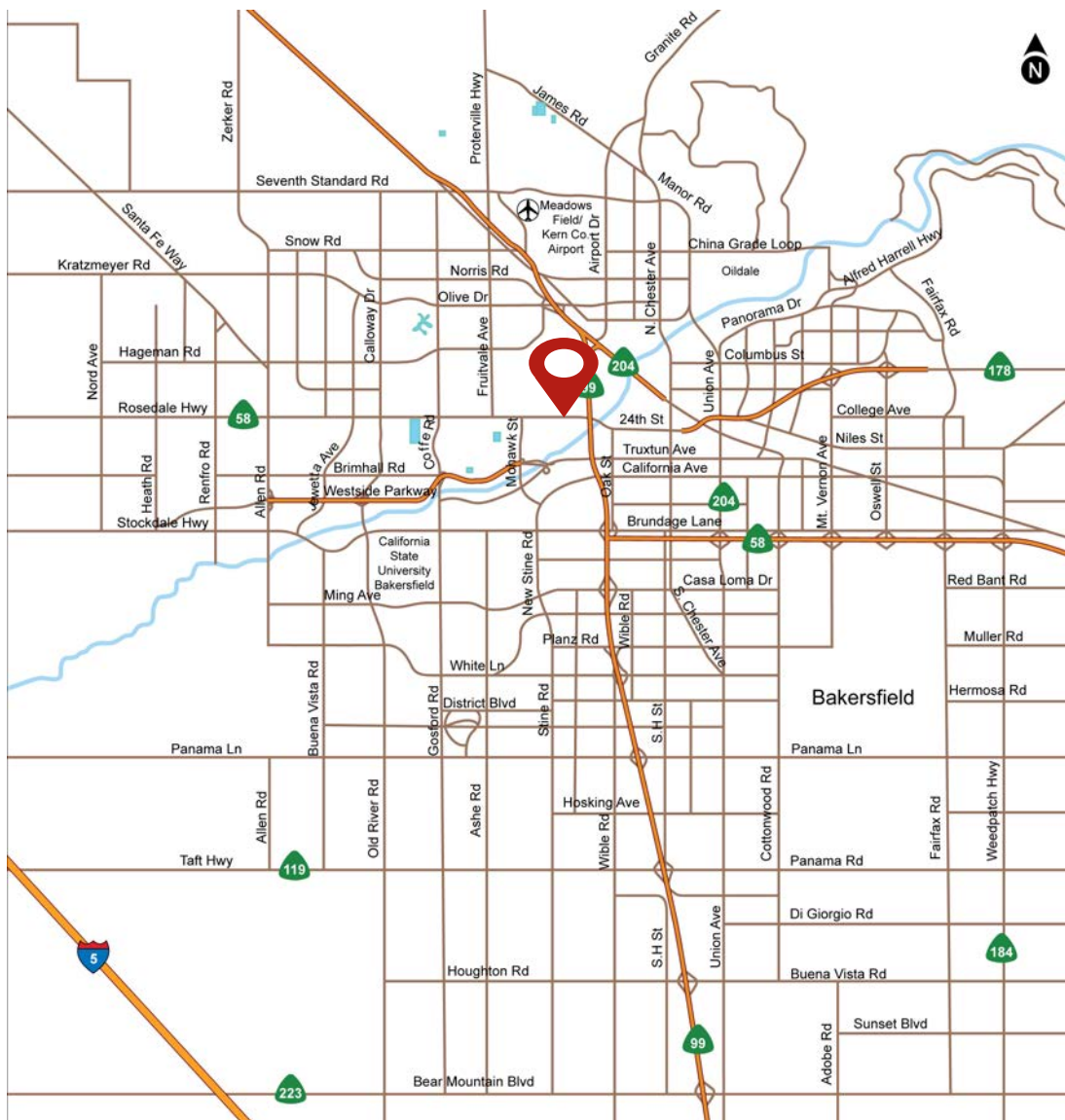
4000-4020 ROSEDALE HIGHWAY, BAKERSFIELD, CA






# FOR SALE > EXCELLENT ROSEDALE HIGHWAY VISIBILITY BAKERSFIELD CITY MAP

4000-4020 ROSEDALE HIGHWAY, BAKERSFIELD, CA



 **Subject**  
**4000-4020 Rosedale Highway**

## CONTACT US

JOHN HALE  
SENIOR VICE PRESIDENT & PRINCIPAL  
HALE RETAIL TEAM  
CENTRAL CALIFORNIA  
LICENSE NUMBER 00870084  
661 631 3815  
[john.hale@colliers.com](mailto:john.hale@colliers.com)

STEPHEN HALE  
ASSOCIATE  
HALE RETAIL TEAM  
CENTRAL CALIFORNIA  
LICENSE NUMBER 01997969  
661 631 3820  
[stephen.hale@colliers.com](mailto:stephen.hale@colliers.com)

KEVIN HALE  
ASSOCIATE  
HALE RETAIL TEAM  
CENTRAL CALIFORNIA  
LICENSE NUMBER 02044018  
661 631 3825  
[kevin.hale@colliers.com](mailto:kevin.hale@colliers.com)

This document has been prepared by Colliers International for advertising and general information only. Colliers International makes no guarantees, representations or warranties of any kind, expressed or implied, regarding the information including, but not limited to, warranties of content, accuracy and reliability. Any interested party should undertake their own inquiries as to the accuracy of the information. Colliers International excludes unequivocally all inferred or implied terms, conditions and warranties arising out of this document and excludes all liability for loss and damages arising there from. This publication is the copyrighted property of Colliers International and/or its licensor(s). ©2017. All rights reserved.

COLLIERS INTERNATIONAL  
10000 Stockdale Highway, Suite 102  
Bakersfield, CA 93311  
[www.colliers.com/bakersfield](http://www.colliers.com/bakersfield)

