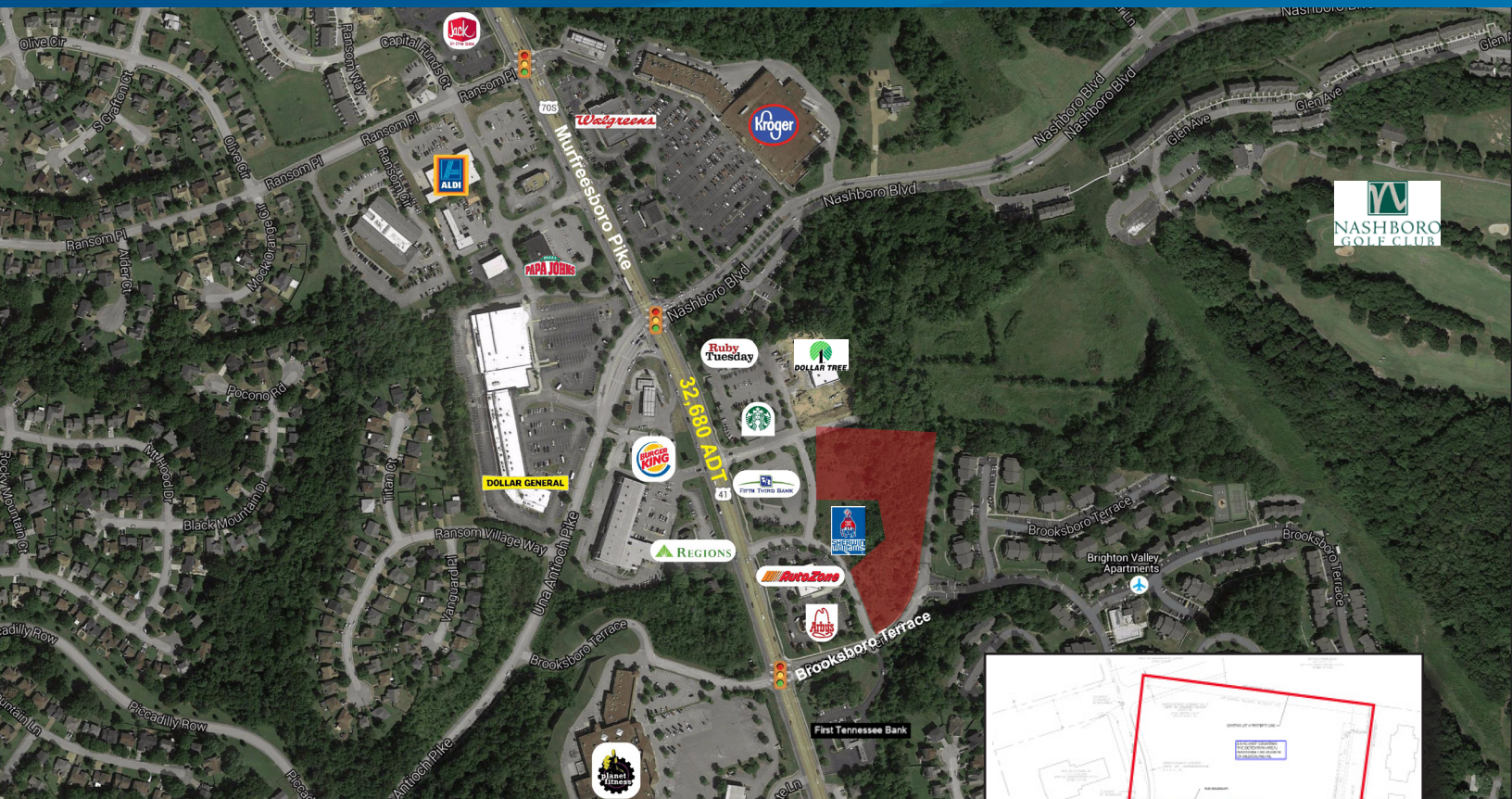


FOR SALE > COMMERCIAL LAND



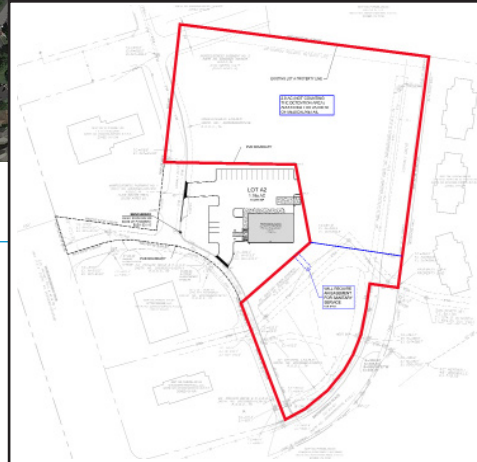
Nashboro Village Area

2338 MURFREESBORO PIKE, NASHVILLE, TN 37217



Site Features

- > ±2.8 AC
- > On site detention
- > Zoned Commercial
- > Adjacent to NEW Sherwin Williams
- > This property is located in the high density Nashboro Village submarket
- > Access is between Starbucks and Fifth Third Bank and/or Brooksboro Terrace
- > Traffic Count: 32,680 VPD - Murfreesboro Pike



Demographics

	1 MILE	3 MILE	5 MILE
Population	14,156	68,064	162,868
Average Family Income	\$54,148	\$54,966	\$52,367
Traffic	32,680 VPD (2014)		

Sale Price: \$450,000

The information contained herein has been given to us by the owner of the property or other sources we deem reliable. We have no reason to doubt its accuracy, but we do not guarantee it. All information should be verified prior to purchase or lease.

AGENT: MIKE BAGGETT
DIR: 615 850 2777
NASHVILLE, TN
mike.baggett@colliers.com

COLLIERS INTERNATIONAL
615 3rd Avenue South, Suite 500
Nashville, TN 37210
615 850 2700
www.colliers.com