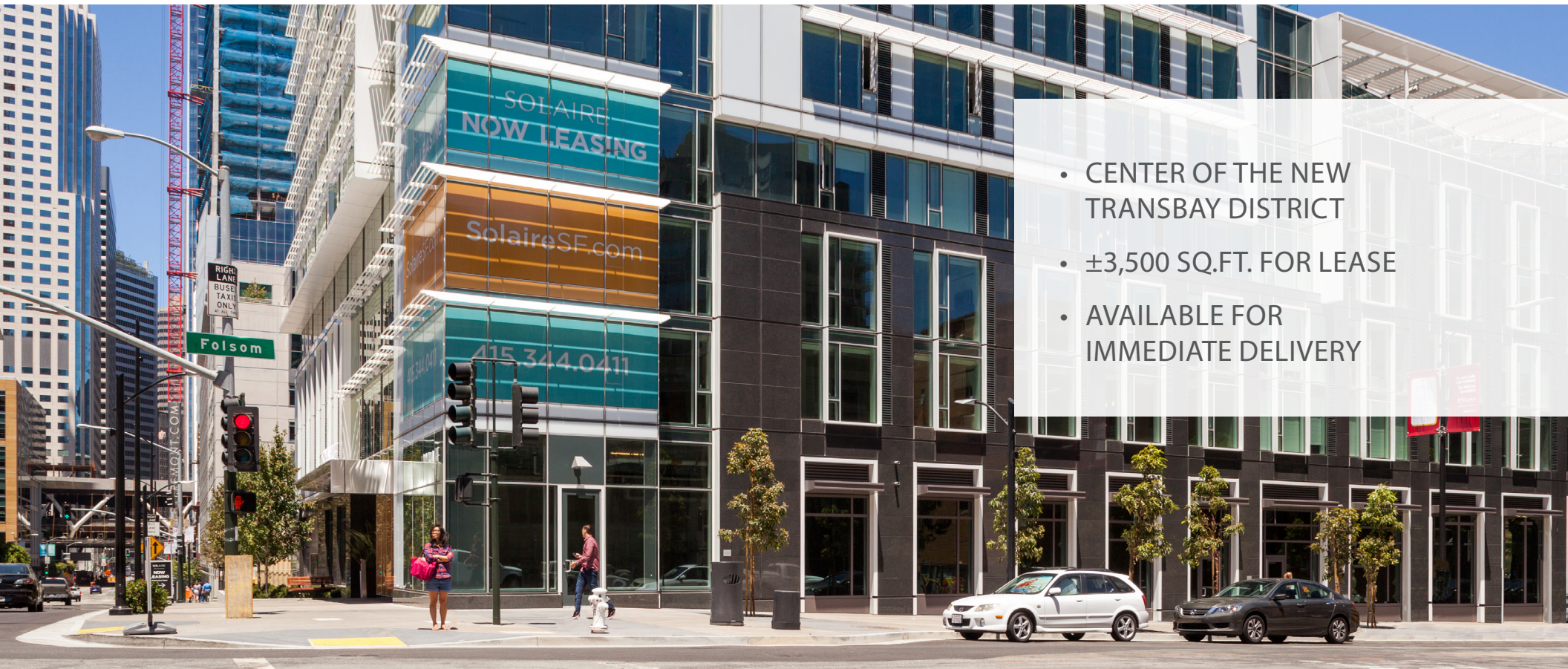


# SOLAIRE

# URBAN RETAIL

## 299 FREMONT STREET



- CENTER OF THE NEW TRANSBAY DISTRICT
- ±3,500 SQ.FT. FOR LEASE
- AVAILABLE FOR IMMEDIATE DELIVERY

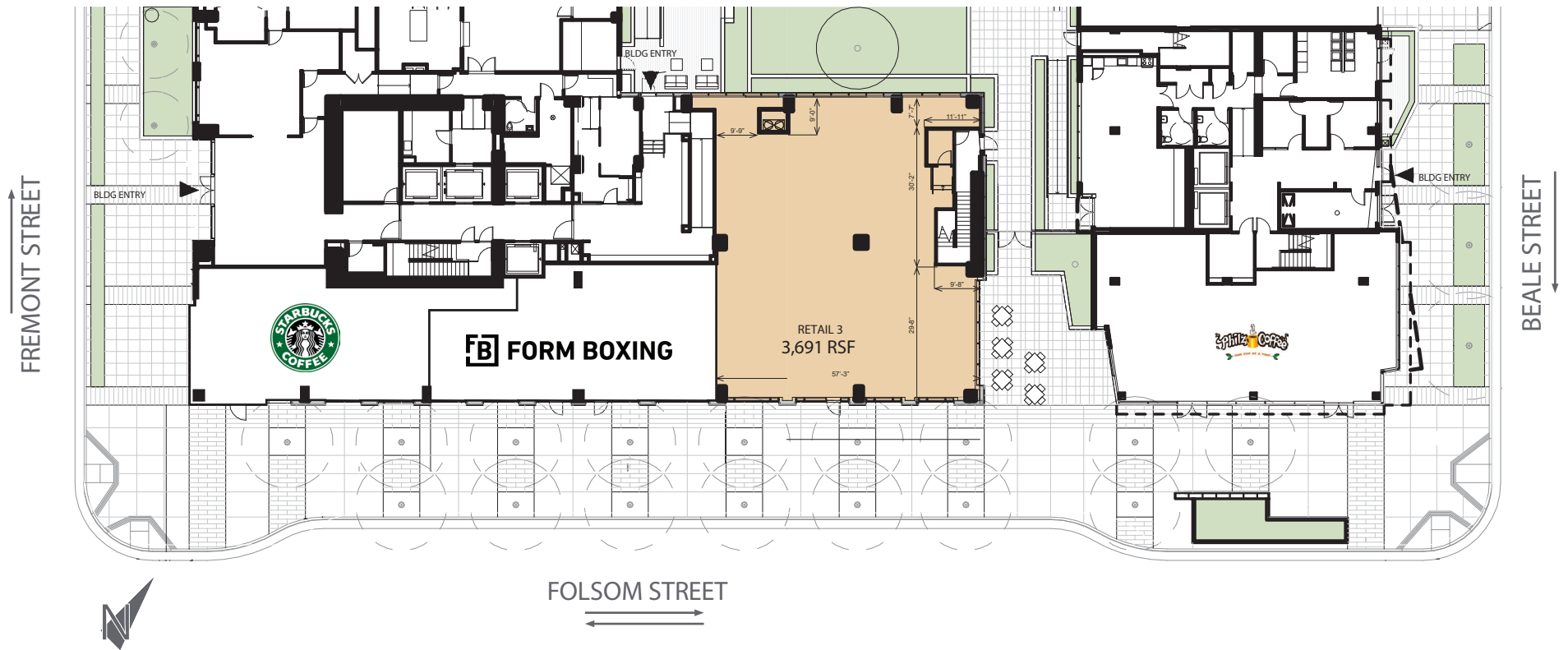


ERIKA ELLIOTT  
415 293 6295  
erika.elliott@colliers.com

JULIE TAYLOR  
415 293 6293  
julie.taylor@colliers.com

A DEVELOPMENT OF  
GOLUB & COMPANY  


# OVERALL GROUND FLOOR RETAIL PLAN



## IDEAL SPACE FOR:

- Restaurants
- Financial Users
- Retail Shops + Boutiques
- Business Services

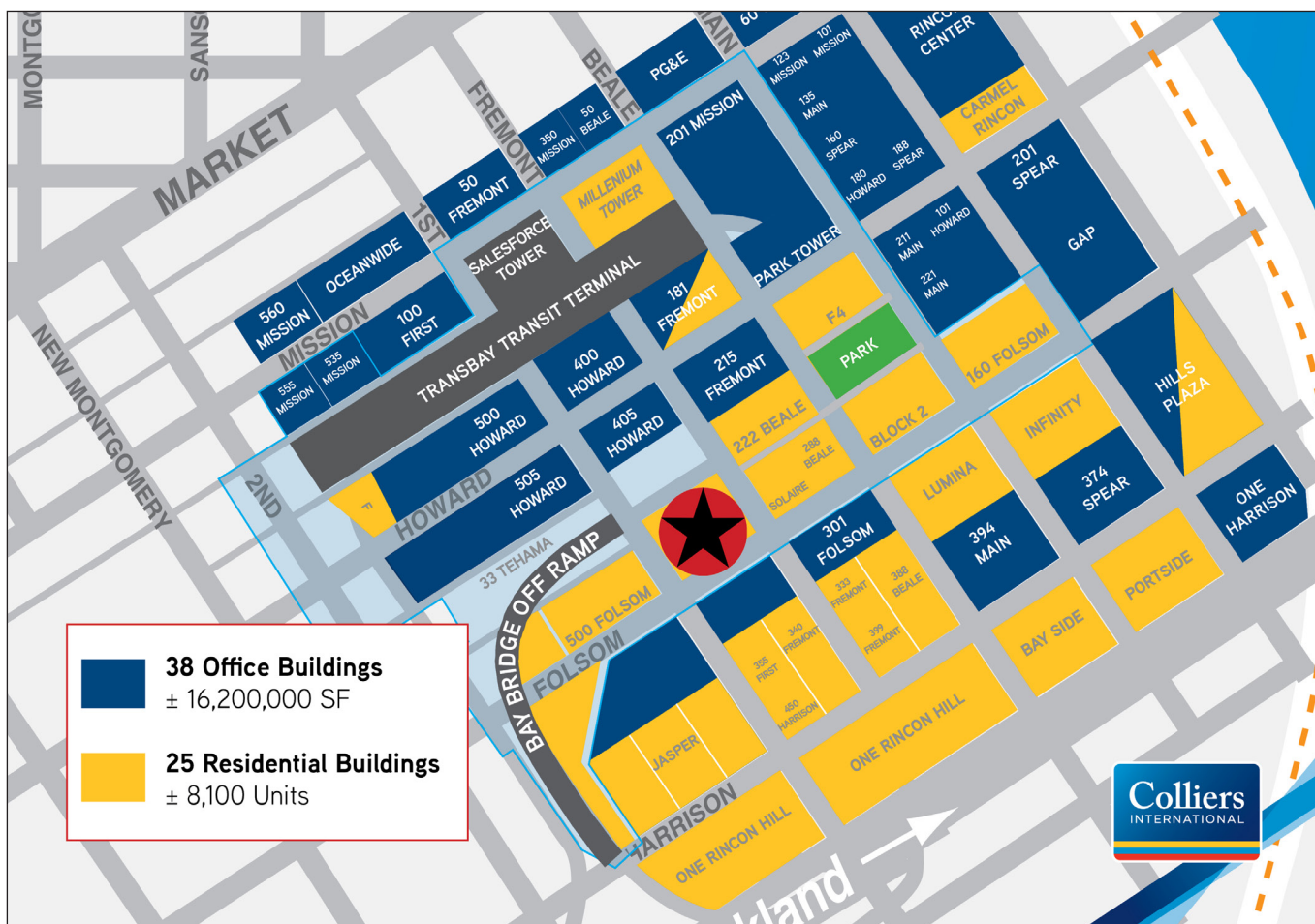


ERIKA ELLIOTT  
415 293 6295  
erika.elliott@colliers.com

JULIE TAYLOR  
415 293 6293  
julie.taylor@colliers.com

A DEVELOPMENT OF  
**GOLUB & COMPANY**  
**GOLUB**





## Surrounded by the Transbay Office Submarket

Headquarters for Salesforce, Gymboree, Charles Schwab, Orrick Harrington, FitBit & LinkedIn

- 43,800 Employees within ¼ mile
- 4.8 Million Square Feet of Office Space (Existing & Coming Soon)

## At the center of the new Folsom Street Residential corridor

- 5,700 new units by 2018
- 8,500 units within 2 blocks
- 21,631 cars that use the Fremont Street off ramp each day

This marketing piece has been prepared by Colliers International for general information only. Information contained herein has been obtained from sources deemed reliable and no representation is made as to the accuracy thereof. Colliers International does not guarantee, warrant or represent that the information contained in this document is correct. Any interested party should undertake their own inquiries as to the accuracy of the information. Colliers International excludes unequivocally all inferred or implied terms, conditions and warranties arising out of this document and excludes all liability for loss and damages arising there from.



ERIKA ELLIOTT  
415 293 6295  
erika.elliott@colliers.com

JULIE TAYLOR  
415 293 6293  
julie.taylor@colliers.com

A DEVELOPMENT OF  
GOLUB & COMPANY  
**GOLUB**