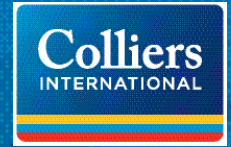


FOR LEASE > MEDICAL OFFICE SPACE

1100 WILSHIRE BLVD

LOS ANGELES, CA 90017



AVAILABLE SPACES

Floor 1 - Suite 1

±7,680 SF - ±10,680 SF*

*±10,680 SF available if 2nd floor space consisting of ±3,000 SF is created above suite.

Floor 1 - Suite 2

±3,809 gsf

Floor 2 - Suite 3

±3,991 gsf

GENERAL PRICING

Asking Rent \$4.00 NNN

TI Allowance Negotiable

Parking Up to 82 spaces available on-site

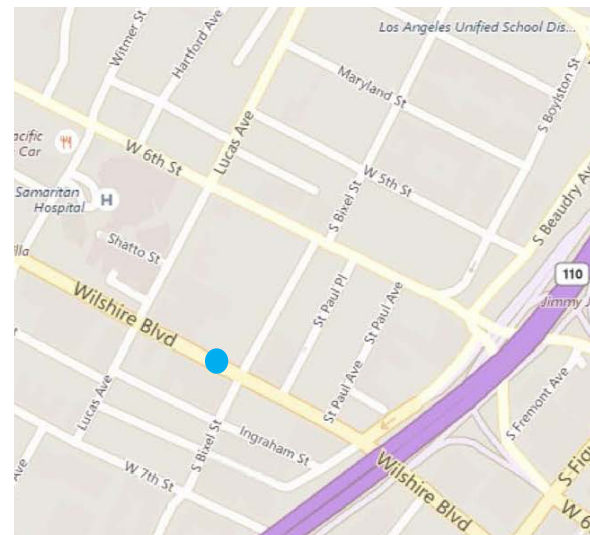
Garage Secure, Direct Access

Covered Yes

1100 Wilshire Blvd. > Medical Office Space

This cohesive medical epicenter boasts Good Samaritan Hospital, Samaritan Medical Tower, City of Hope medical offices, the California CardioVascular Institute, Urgent Care Medical Pharmacy, Esthetic Dentistry, and several medical/office buildings.

The property is within two blocks of eight (8) existing residential projects totaling 2,261 residential units including GLO luxury apartment community with 201 units and Starbucks, Chase Bank, Subway, and Plan Check. There are seven (7) additional residential developments in some stage of development that may bring an additional 2,899 households to the immediate area.



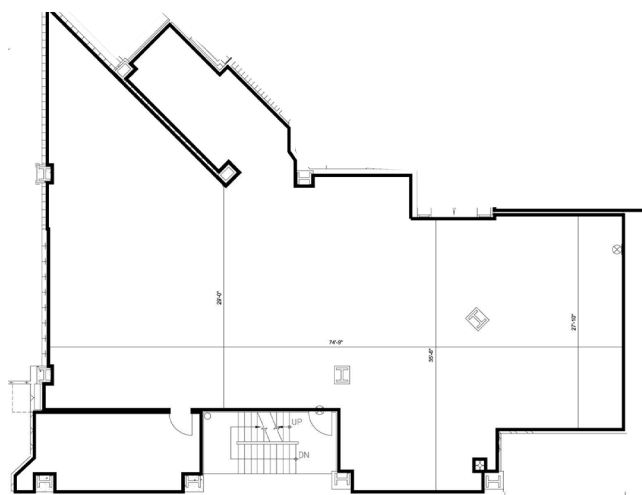
ANGIE WEBER
VICE PRESIDENT
818 325 4114
angie.weber@colliers.com

DANA NIALIS
ASSOCIATE
818 325 4107
dana.nialis@colliers.com

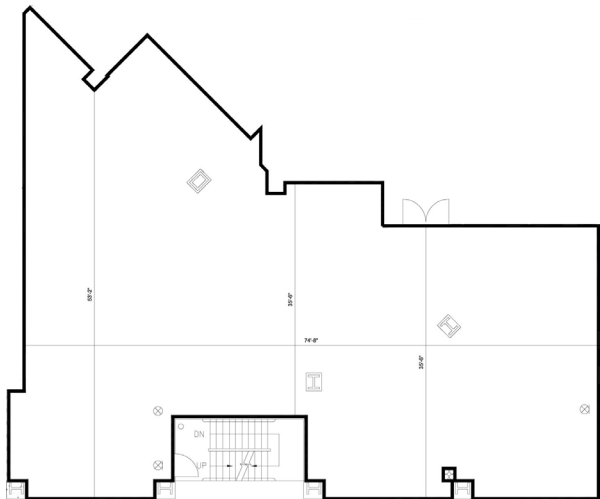
COLLIERS INTERNATIONAL
16830 Ventura Blvd., Suite J
Encino, CA 90017
www.colliers.com

1100 Wilshire Blvd. > Floor Plan

Floor 1 - Suite 2 ±3,809 SF

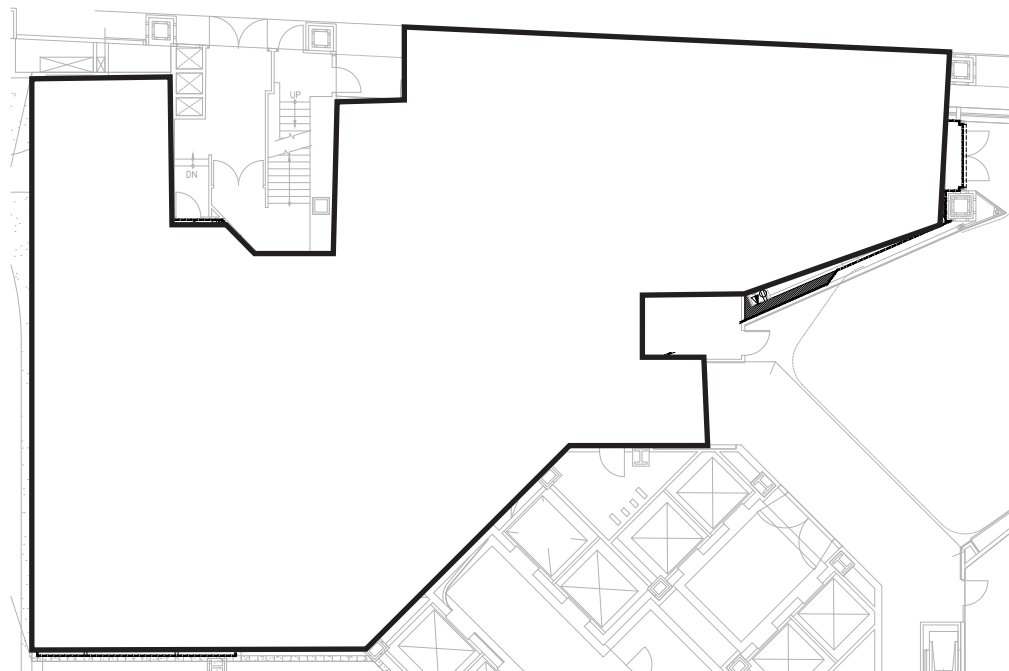


Floor 2 - Suite 3 ±3,991 SF



Floor 1 - Suite 1 ±7,680 SF - ±10,680 SF*

*10,680 SF available if 2nd floor space consisting of ±3,000 SF is created above suite.



ANGIE WEBER
VICE PRESIDENT
818 325 4114
angie.weber@colliers.com

DANA NIALIS
ASSOCIATE
818 325 4107
dana.nialis@colliers.com

COLLIERS INTERNATIONAL
16830 Ventura Blvd. Suite J
Encino, CA 91436
www.colliers.com

