

FOR LEASE > OFFICE SPACE



Seton Center

2816 E 23RD STREET, KANSAS CITY, MISSOURI



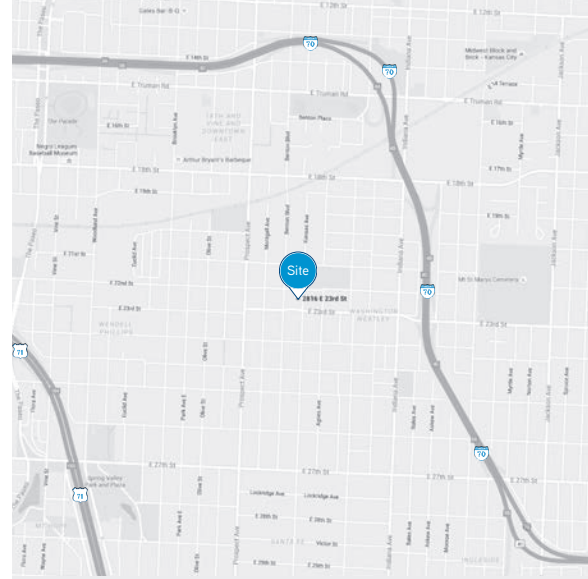
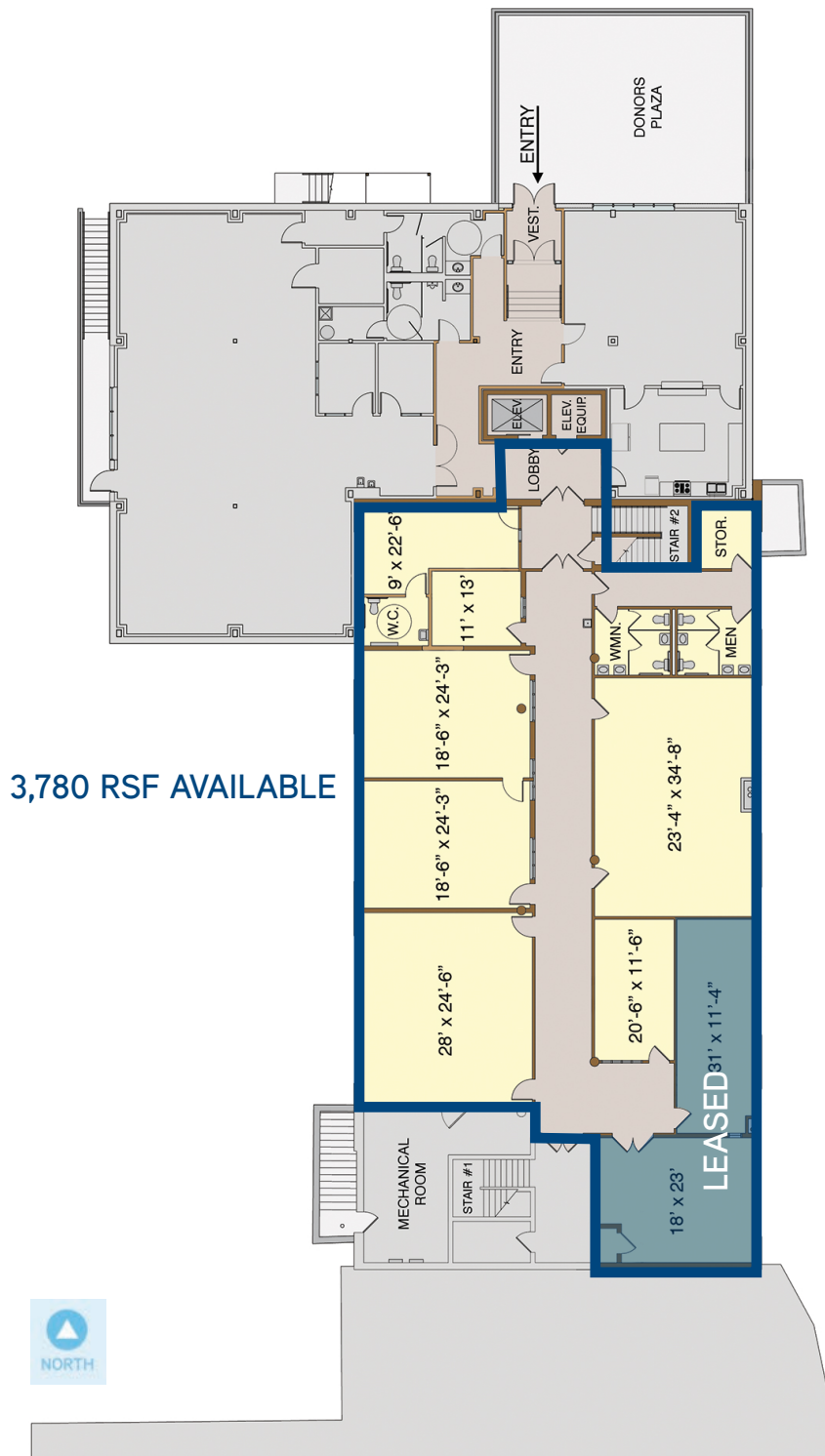
Property Features

- > 3,780 RSF available - space divisible
- > Great not-for-profit lease space
- > Convenient access to I-70
- > Flexible lease terms
- > \$12.50 per rentable square feet

AGENT: PAT COPPINGER
+1 816 556 1110
KANSAS CITY, MO
pat.coppinger@colliers.com

COLLIERS INTERNATIONAL
4520 Main Street, Suite 1000
Kansas City, MO 64111
www.colliers.com

Seton Center > Floor Plan



Contact Us

AGENT: PAT COPPINGER
+1 816 556 1110
KANSAS CITY, MO
pat.coppinger@colliers.com

COLLIERS INTERNATIONAL
4520 Main Street, Suite 1000
Kansas City, MO 64111
www.colliers.com