

1720 WEST HIGHWAY 326, OCALA, FL 34475

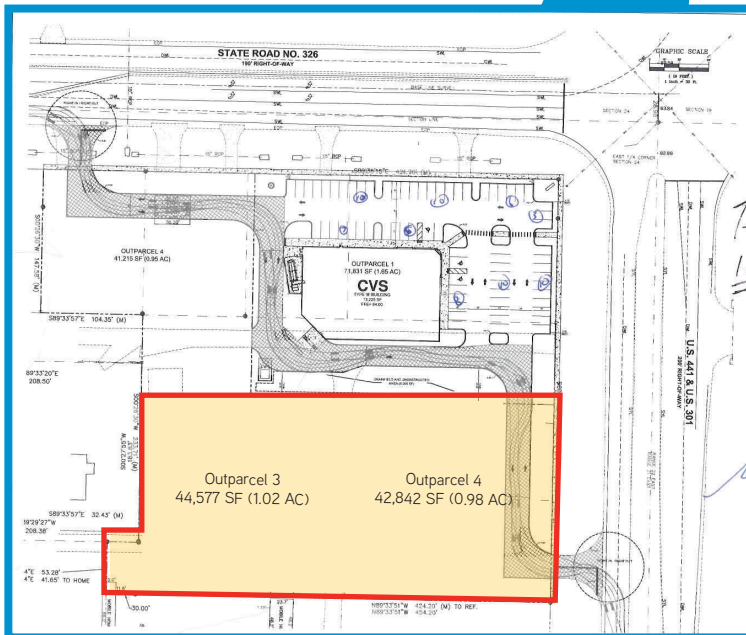


- > Land available: 2± AC
- > Zoning: B2
- > 2 adjacent parcels totaling 2± AC for sale or ground lease
- > Excellent visibility to Hwy. 441
- > Surrounding retailers include: Sweetbay Supermarket, Dollar Tree, Dollar General, CVS Pharmacy and Tractor Supply
- > Multiple points of ingress/egress; shared access with CVS
- > Traffic Counts: 17,300 VPD on Hwy. 441
11,500 VPD on W. SR 326

[illegible]

	<u>1-Mile</u>	<u>3-Mile</u>	<u>5-Mile</u>
Total Population	1,161	10,582	46,100
Total Households	417	4,143	15,902
Average HH Income	\$50,626	\$46,832	\$45,481

COLLIERS INTERNATIONAL
255 S. Orange Avenue, Suite 1300
Orlando, FL 32801
www.colliers.com



Contact Us

SCOTT CORBIN

Executive Managing Director

Retail Services

+ 1 407 362 6164

scott.corbin@colliers.com

COLLIERS INTERNATIONAL

255 S. Orange Avenue Suite 1300

Orlando, FL 32801

www.colliers.com