

FOR SALE OR LEASE > RETAIL

FORMER PHARMACY

4058 WEST JEFFERSON AVENUE | ECORSE, MICHIGAN



GREAT SIGNAGE AND VISIBILITY

> PROPERTY HIGHLIGHTS

- 1,500 SF Former Pharmacy Available
- Has Drive-Thru & Electronic Sign
- Traffic Counts of 18,000

> DEMOGRAPHICS

	1 MILE	3 MILE	5 MILE
POPULATION	10,718	75,360	189,168
AVG. INCOME	\$41,122	\$47,658	\$54,352
HOUSEHOLDS	4,145	30,441	75,458

COLLIERS INTERNATIONAL
2 Corporate Drive | Suite 300
Southfield, Michigan 48076

For More Information Call:

BRIAN WHITFIELD

PHONE 248 540 1000 EXT 1646

EMAIL brian.whitfield@colliers.com



colliers.com/detroit



FOR SALE OR LEASE > RETAIL

FORMER PHARMACY

4058 WEST JEFFERSON AVENUE | ECORSE, MICHIGAN



> AERIAL MAP



BRIAN WHITFIELD

PHONE 248 540 1000 EXT 1646

EMAIL brian.whitfield@colliers.com



COLLIERS INTERNATIONAL

2 Corporate Dr. | Suite 300
Southfield, Michigan 48076

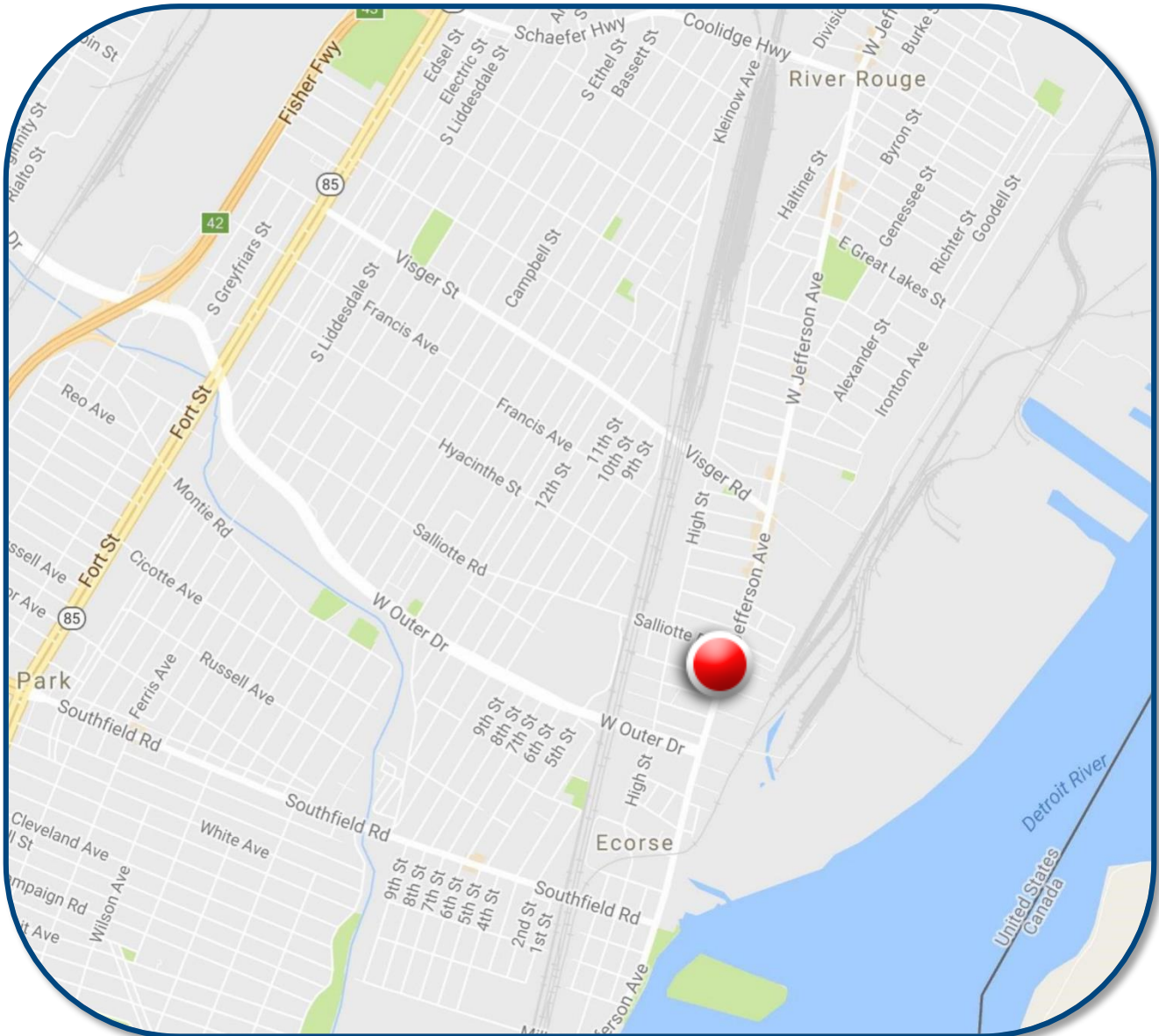
FOR SALE OR LEASE > RETAIL

FORMER PHARMACY

4058 WEST JEFFERSON AVENUE | ECORSE, MICHIGAN



> LOCATION MAP



BRIAN WHITFIELD

PHONE 248 540 1000 EXT 1646

EMAIL brian.whitfield@colliers.com



COLLIERS INTERNATIONAL

2 Corporate Dr. | Suite 300

Southfield, Michigan 48076

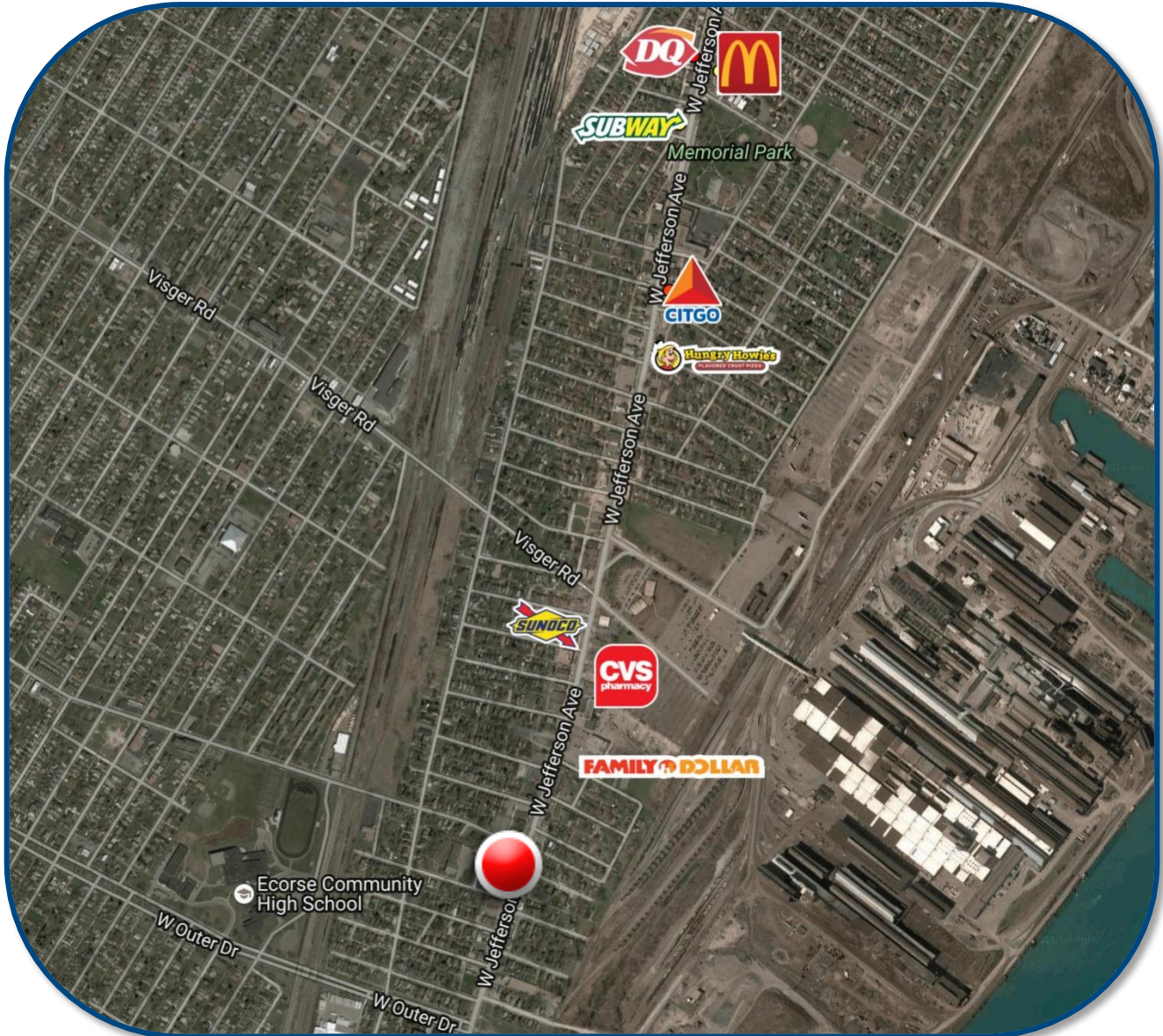
FOR SALE OR LEASE > RETAIL

FORMER PHARMACY

4058 WEST JEFFERSON AVENUE | ECORSE, MICHIGAN



> AREA MERCHANT MAP



BRIAN WHITFIELD

PHONE 248 540 1000 EXT 1646

EMAIL brian.whitfield@colliers.com



COLLIERS INTERNATIONAL

2 Corporate Dr. | Suite 300
Southfield, Michigan 48076

SUMMARY PROFILE

2000-2010 Census, 2016 Estimates with 2021 Projections

Calculated using Weighted Block Centroid from Block Groups



Lat/Lon: 42.2511/-83.1414

RS1

4058 W Jefferson Ave

Ecorse, MI 48229

1 mi radius

3 mi radius

5 mi radius

POPULATION	2016 Estimated Population	10,718	75,360	189,168
	2021 Projected Population	10,950	73,760	184,028
	2010 Census Population	10,838	79,495	200,502
	2000 Census Population	12,735	88,404	217,348
	Projected Annual Growth 2016 to 2021	0.4%	-0.4%	-0.5%
	Historical Annual Growth 2000 to 2016	-1.0%	-0.9%	-0.8%
	2016 Median Age	34.3	36.1	36
HOUSEHOLDS	2016 Estimated Households	4,145	30,441	75,458
	2021 Projected Households	4,332	30,387	74,645
	2010 Census Households	4,074	31,210	77,809
	2000 Census Households	4,818	35,094	84,762
	Projected Annual Growth 2016 to 2021	0.9%	-	-0.2%
	Historical Annual Growth 2000 to 2016	-0.9%	-0.8%	-0.7%
RACE AND ETHNICITY	2016 Estimated White	47.4%	67.1%	73.7%
	2016 Estimated Black or African American	42.6%	23.1%	14.0%
	2016 Estimated Asian or Pacific Islander	0.7%	0.9%	1.2%
	2016 Estimated American Indian or Native Alaskan	0.7%	0.6%	0.7%
	2016 Estimated Other Races	8.6%	8.3%	10.4%
	2016 Estimated Hispanic	13.4%	13.5%	18.1%
INCOME	2016 Estimated Average Household Income	\$41,122	\$47,658	\$54,352
	2016 Estimated Median Household Income	\$33,292	\$40,836	\$46,406
	2016 Estimated Per Capita Income	\$15,934	\$19,268	\$21,706
EDUCATION (AGE 25+)	2016 Estimated Elementary (Grade Level 0 to 8)	7.8%	6.2%	7.2%
	2016 Estimated Some High School (Grade Level 9 to 11)	15.4%	13.0%	11.8%
	2016 Estimated High School Graduate	38.5%	37.7%	34.5%
	2016 Estimated Some College	21.0%	24.1%	23.3%
	2016 Estimated Associates Degree Only	5.7%	7.6%	8.3%
	2016 Estimated Bachelors Degree Only	7.4%	7.5%	9.4%
	2016 Estimated Graduate Degree	4.3%	4.1%	5.6%
BUSINESS	2016 Estimated Total Businesses	231	1,896	5,898
	2016 Estimated Total Employees	3,141	25,876	74,829
	2016 Estimated Employee Population per Business	13.6	13.6	12.7
	2016 Estimated Residential Population per Business	46.4	39.7	32.1

This report was produced using data from private and government sources deemed to be reliable. The information herein is provided without representation or warranty.