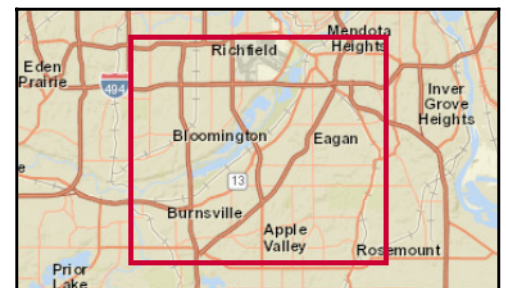
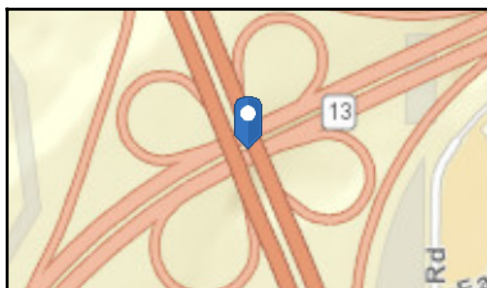


MN-13 N, Saint Paul, Minnesota, 55122  
Rings: 1, 3, 5 mile radii

Prepared by Esri  
Latitude: 44.81506  
Longitude: -93.22112





## Executive Summary

MN-13 N, Saint Paul, Minnesota, 55122  
Rings: 1, 3, 5 mile radii

Prepared by Esri  
Latitude: 44.81506  
Longitude: -93.22112

	1 mile	3 miles	5 miles
<b>Population</b>			
2000 Population	5,174	60,489	163,277
2010 Population	5,302	60,466	164,281
2017 Population	5,794	63,088	171,692
2022 Population	5,999	64,792	176,555
2000-2010 Annual Rate	0.24%	0.00%	0.06%
2010-2017 Annual Rate	1.23%	0.59%	0.61%
2017-2022 Annual Rate	0.70%	0.53%	0.56%
2017 Male Population	49.2%	49.0%	49.1%
2017 Female Population	50.8%	51.0%	50.9%
2017 Median Age	35.7	38.6	38.7

In the identified area, the current year population is 171,692. In 2010, the Census count in the area was 164,281. The rate of change since 2010 was 0.61% annually. The five-year projection for the population in the area is 176,555 representing a change of 0.56% annually from 2017 to 2022. Currently, the population is 49.1% male and 50.9% female.

### Median Age

The median age in this area is 35.7, compared to U.S. median age of 38.2.

### Race and Ethnicity

2017 White Alone	72.7%	73.1%	73.3%
2017 Black Alone	11.6%	11.0%	10.0%
2017 American Indian/Alaska Native Alone	0.4%	0.4%	0.5%
2017 Asian Alone	8.4%	8.4%	7.6%
2017 Pacific Islander Alone	0.2%	0.1%	0.1%
2017 Other Race	2.9%	3.2%	4.8%
2017 Two or More Races	4.0%	3.8%	3.8%
2017 Hispanic Origin (Any Race)	6.3%	7.0%	9.4%

Persons of Hispanic origin represent 9.4% of the population in the identified area compared to 18.1% of the U.S. population. Persons of Hispanic Origin may be of any race. The Diversity Index, which measures the probability that two people from the same area will be from different race/ethnic groups, is 54.1 in the identified area, compared to 64.0 for the U.S. as a whole.

### Households

2000 Households	2,308	24,869	64,930
2010 Households	2,447	25,299	66,504
2017 Total Households	2,686	26,441	69,407
2022 Total Households	2,794	27,189	71,394
2000-2010 Annual Rate	0.59%	0.17%	0.24%
2010-2017 Annual Rate	1.29%	0.61%	0.59%
2017-2022 Annual Rate	0.79%	0.56%	0.57%
2017 Average Household Size	2.15	2.37	2.45

The household count in this area has changed from 66,504 in 2010 to 69,407 in the current year, a change of 0.59% annually. The five-year projection of households is 71,394, a change of 0.57% annually from the current year total. Average household size is currently 2.45, compared to 2.45 in the year 2010. The number of families in the current year is 43,589 in the specified area.

**Data Note:** Income is expressed in current dollars

**Source:** U.S. Census Bureau, Census 2010 Summary File 1. Esri forecasts for 2017 and 2022. Esri converted Census 2000 data into 2010 geography.

August 08, 2017



## Executive Summary

MN-13 N, Saint Paul, Minnesota, 55122  
Rings: 1, 3, 5 mile radii

Prepared by Esri  
Latitude: 44.81506  
Longitude: -93.22112

	1 mile	3 miles	5 miles
<b>Median Household Income</b>			
2017 Median Household Income	\$61,791	\$69,583	\$69,979
2022 Median Household Income	\$68,122	\$76,551	\$76,603
2017-2022 Annual Rate	1.97%	1.93%	1.83%
<b>Average Household Income</b>			
2017 Average Household Income	\$82,323	\$93,643	\$93,578
2022 Average Household Income	\$92,733	\$104,429	\$103,943
2017-2022 Annual Rate	2.41%	2.20%	2.12%
<b>Per Capita Income</b>			
2017 Per Capita Income	\$36,136	\$39,306	\$38,015
2022 Per Capita Income	\$40,887	\$43,876	\$42,220
2017-2022 Annual Rate	2.50%	2.22%	2.12%

Current median household income is \$69,979 in the area, compared to \$56,124 for all U.S. households. Median household income is projected to be \$76,603 in five years, compared to \$62,316 for all U.S. households

Current average household income is \$93,578 in this area, compared to \$80,675 for all U.S. households. Average household income is projected to be \$103,943 in five years, compared to \$91,585 for all U.S. households

Current per capita income is \$38,015 in the area, compared to the U.S. per capita income of \$30,820. The per capita income is projected to be \$42,220 in five years, compared to \$34,828 for all U.S. households

<b>Housing</b>			
2000 Total Housing Units	2,351	25,366	66,373
2000 Owner Occupied Housing Units	1,445	17,588	45,826
2000 Renter Occupied Housing Units	863	7,281	19,104
2000 Vacant Housing Units	43	497	1,443
2010 Total Housing Units	2,623	26,720	70,029
2010 Owner Occupied Housing Units	1,528	17,740	45,660
2010 Renter Occupied Housing Units	919	7,559	20,844
2010 Vacant Housing Units	176	1,421	3,525
2017 Total Housing Units	2,874	27,840	72,810
2017 Owner Occupied Housing Units	1,586	17,973	46,384
2017 Renter Occupied Housing Units	1,099	8,468	23,024
2017 Vacant Housing Units	188	1,399	3,403
2022 Total Housing Units	2,987	28,647	74,856
2022 Owner Occupied Housing Units	1,616	18,368	47,518
2022 Renter Occupied Housing Units	1,178	8,821	23,877
2022 Vacant Housing Units	193	1,458	3,462

Currently, 63.7% of the 72,810 housing units in the area are owner occupied; 31.6%, renter occupied; and 4.7% are vacant. Currently, in the U.S., 55.6% of the housing units in the area are owner occupied; 33.1% are renter occupied; and 11.3% are vacant. In 2010, there were 70,029 housing units in the area - 65.2% owner occupied, 29.8% renter occupied, and 5.0% vacant. The annual rate of change in housing units since 2010 is 1.75%. Median home value in the area is \$237,191, compared to a median home value of \$207,344 for the U.S. In five years, median value is projected to change by 1.90% annually to \$260,553.

**Data Note:** Income is expressed in current dollars

**Source:** U.S. Census Bureau, Census 2010 Summary File 1. Esri forecasts for 2017 and 2022. Esri converted Census 2000 data into 2010 geography.

August 08, 2017





## 2010 Census Profile

MN-13 N, Saint Paul, Minnesota, 55122  
Ring: 1 mile radius

Prepared by Esri  
Latitude: 44.81506  
Longitude: -93.22112

	2000	2010	2000-2010 Annual Rate
Population	5,174	5,302	0.24%
Households	2,308	2,447	0.59%
Housing Units	2,351	2,623	1.10%
<b>Population by Race</b>			
Total		5,302	100.0%
Population Reporting One Race		5,125	96.7%
White		4,136	78.0%
Black		447	8.4%
American Indian		18	0.3%
Asian		390	7.4%
Pacific Islander		11	0.2%
Some Other Race		123	2.3%
Population Reporting Two or More Races		177	3.3%
Total Hispanic Population		278	5.2%
<b>Population by Sex</b>			
Male		2,625	49.5%
Female		2,677	50.5%
<b>Population by Age</b>			
Total		5,301	100.0%
Age 0 - 4		371	7.0%
Age 5 - 9		320	6.0%
Age 10 - 14		282	5.3%
Age 15 - 19		312	5.9%
Age 20 - 24		418	7.9%
Age 25 - 29		563	10.6%
Age 30 - 34		473	8.9%
Age 35 - 39		369	7.0%
Age 40 - 44		331	6.2%
Age 45 - 49		418	7.9%
Age 50 - 54		350	6.6%
Age 55 - 59		280	5.3%
Age 60 - 64		209	3.9%
Age 65 - 69		200	3.8%
Age 70 - 74		147	2.8%
Age 75 - 79		118	2.2%
Age 80 - 84		73	1.4%
Age 85+		68	1.3%
Age 18+		4,122	77.7%
Age 65+		606	11.4%

**Data Note:** Hispanic population can be of any race. Census 2010 medians are computed from reported data distributions.

**Source:** U.S. Census Bureau, Census 2010 Summary File 1. Esri converted Census 2000 data into 2010 geography.

Households by Type		
Total	2,447	100.0%
Households with 1 Person	816	33.3%
Households with 2+ People	1,631	66.7%
Family Households	1,416	57.9%
Husband-wife Families	1,076	44.0%
With Own Children	445	18.2%
Other Family (No Spouse Present)	340	13.9%
With Own Children	198	8.1%
Nonfamily Households	215	8.8%
All Households with Children	683	27.9%
Multigenerational Households	55	2.2%
Unmarried Partner Households	175	7.2%
Male-female	164	6.7%
Same-sex	11	0.4%
Average Household Size	2.16	
Family Households by Size		
Total	1,417	100.0%
2 People	630	44.5%
3 People	342	24.1%
4 People	266	18.8%
5 People	116	8.2%
6 People	37	2.6%
7+ People	26	1.8%
Average Family Size	2.83	
Nonfamily Households by Size		
Total	1,031	100.0%
1 Person	816	79.1%
2 People	184	17.8%
3 People	24	2.3%
4 People	6	0.6%
5 People	1	0.1%
6 People	0	0.0%
7+ People	0	0.0%
Average Nonfamily Size	1.16	
Population by Relationship and Household Type		
Total	5,302	100.0%
In Households	5,288	99.7%
In Family Households	4,097	77.3%
Householder	1,330	25.1%
Spouse	1,013	19.1%
Child	1,490	28.1%
Other relative	169	3.2%
Nonrelative	94	1.8%
In Nonfamily Households	1,191	22.5%
In Group Quarters	14	0.3%
Institutionalized Population	6	0.1%
Noninstitutionalized Population	7	0.1%

**Data Note:** **Households with children** include any households with people under age 18, related or not. **Multigenerational households** are families with 3 or more parent-child relationships. **Unmarried partner households** are usually classified as nonfamily households unless there is another member of the household related to the householder. Multigenerational and unmarried partner households are reported only to the tract level. Esri estimated block group data, which is used to estimate polygons or non-standard geography. **Average family size** excludes nonrelatives.

**Source:** U.S. Census Bureau, Census 2010 Summary File 1.



## 2010 Census Profile

MN-13 N, Saint Paul, Minnesota, 55122  
Ring: 1 mile radius

Prepared by Esri  
Latitude: 44.81506  
Longitude: -93.22112

### Family Households by Age of Householder

Total	1,417	100.0%
Householder Age 15 - 44	649	45.8%
Householder Age 45 - 54	313	22.1%
Householder Age 55 - 64	211	14.9%
Householder Age 65 - 74	140	9.9%
Householder Age 75+	104	7.3%

### Nonfamily Households by Age of Householder

Total	1,032	100.0%
Householder Age 15 - 44	547	53.0%
Householder Age 45 - 54	185	17.9%
Householder Age 55 - 64	111	10.8%
Householder Age 65 - 74	88	8.5%
Householder Age 75+	101	9.8%

### Households by Race of Householder

Total	2,449	100.0%
Householder is White Alone	2,061	84.2%
Householder is Black Alone	156	6.4%
Householder is American Indian Alone	10	0.4%
Householder is Asian Alone	138	5.6%
Householder is Pacific Islander Alone	1	0.0%
Householder is Some Other Race Alone	39	1.6%
Householder is Two or More Races	44	1.8%
Households with Hispanic Householder	89	3.6%

### Husband-wife Families by Race of Householder

Total	1,077	100.0%
Householder is White Alone	917	85.1%
Householder is Black Alone	57	5.3%
Householder is American Indian Alone	4	0.4%
Householder is Asian Alone	71	6.6%
Householder is Pacific Islander Alone	1	0.1%
Householder is Some Other Race Alone	17	1.6%
Householder is Two or More Races	10	0.9%
Husband-wife Families with Hispanic Householder	37	3.4%

### Other Families (No Spouse) by Race of Householder

Total	339	100.0%
Householder is White Alone	241	71.1%
Householder is Black Alone	47	13.9%
Householder is American Indian Alone	1	0.3%
Householder is Asian Alone	25	7.4%
Householder is Pacific Islander Alone	0	0.0%
Householder is Some Other Race Alone	7	2.1%
Householder is Two or More Races	18	5.3%
Other Families with Hispanic Householder	21	6.2%

### Nonfamily Households by Race of Householder

Total	1,031	100.0%
Householder is White Alone	903	87.6%
Householder is Black Alone	51	4.9%
Householder is American Indian Alone	5	0.5%
Householder is Asian Alone	42	4.1%
Householder is Pacific Islander Alone	0	0.0%
Householder is Some Other Race Alone	14	1.4%
Householder is Two or More Races	16	1.6%
Nonfamily Households with Hispanic Householder	31	3.0%

Source: U.S. Census Bureau, Census 2010 Summary File 1.



## 2010 Census Profile

MN-13 N, Saint Paul, Minnesota, 55122  
Ring: 1 mile radius

Prepared by Esri  
Latitude: 44.81506  
Longitude: -93.22112

### Total Housing Units by Occupancy

Total	2,618	100.0%
Occupied Housing Units	2,447	93.5%
Vacant Housing Units		
For Rent	119	4.5%
Rented, not Occupied	4	0.2%
For Sale Only	25	1.0%
Sold, not Occupied	4	0.2%
For Seasonal/Recreational/Occasional Use	8	0.3%
For Migrant Workers	0	0.0%
Other Vacant	11	0.4%
Total Vacancy Rate	6.7%	

### Households by Tenure and Mortgage Status

Total	2,447	100.0%
Owner Occupied	1,528	62.4%
Owned with a Mortgage/Loan	1,203	49.2%
Owned Free and Clear	325	13.3%
Average Household Size	2.37	
Renter Occupied	919	37.6%
Average Household Size	1.82	

### Owner-occupied Housing Units by Race of Householder

Total	1,528	100.0%
Householder is White Alone	1,390	91.0%
Householder is Black Alone	42	2.7%
Householder is American Indian Alone	3	0.2%
Householder is Asian Alone	75	4.9%
Householder is Pacific Islander Alone	1	0.1%
Householder is Some Other Race Alone	6	0.4%
Householder is Two or More Races	11	0.7%
Owner-occupied Housing Units with Hispanic Householder	26	1.7%

### Renter-occupied Housing Units by Race of Householder

Total	919	100.0%
Householder is White Alone	671	73.0%
Householder is Black Alone	114	12.4%
Householder is American Indian Alone	7	0.8%
Householder is Asian Alone	63	6.9%
Householder is Pacific Islander Alone	0	0.0%
Householder is Some Other Race Alone	32	3.5%
Householder is Two or More Races	32	3.5%
Renter-occupied Housing Units with Hispanic Householder	62	6.7%

### Average Household Size by Race/Hispanic Origin of Householder

Householder is White Alone	2.06
Householder is Black Alone	2.75
Householder is American Indian Alone	2.00
Householder is Asian Alone	2.70
Householder is Pacific Islander Alone	3.00
Householder is Some Other Race Alone	3.00
Householder is Two or More Races	2.39
Householder is Hispanic	2.89

Source: U.S. Census Bureau, Census 2010 Summary File 1.



## 2010 Census Profile

MN-13 N, Saint Paul, Minnesota, 55122  
Ring: 3 mile radius

Prepared by Esri  
Latitude: 44.81506  
Longitude: -93.22112

	2000	2010	2000-2010 Annual Rate
Population	60,489	60,466	0.00%
Households	24,869	25,299	0.17%
Housing Units	25,366	26,720	0.52%
<b>Population by Race</b>			
Total		60,466	100.0%
Population Reporting One Race		58,471	96.7%
White		46,886	77.5%
Black		5,173	8.6%
American Indian		213	0.4%
Asian		4,418	7.3%
Pacific Islander		51	0.1%
Some Other Race		1,730	2.9%
Population Reporting Two or More Races		1,995	3.3%
Total Hispanic Population		3,724	6.2%
<b>Population by Sex</b>			
Male		29,547	48.9%
Female		30,919	51.1%
<b>Population by Age</b>			
Total		60,467	100.0%
Age 0 - 4		4,039	6.7%
Age 5 - 9		3,714	6.1%
Age 10 - 14		3,550	5.9%
Age 15 - 19		3,582	5.9%
Age 20 - 24		3,653	6.0%
Age 25 - 29		5,248	8.7%
Age 30 - 34		4,583	7.6%
Age 35 - 39		3,962	6.6%
Age 40 - 44		4,010	6.6%
Age 45 - 49		4,727	7.8%
Age 50 - 54		4,932	8.2%
Age 55 - 59		4,130	6.8%
Age 60 - 64		3,217	5.3%
Age 65 - 69		2,370	3.9%
Age 70 - 74		1,656	2.7%
Age 75 - 79		1,269	2.1%
Age 80 - 84		967	1.6%
Age 85+		857	1.4%
Age 18+		46,850	77.5%
Age 65+		7,119	11.8%

**Data Note:** Hispanic population can be of any race. Census 2010 medians are computed from reported data distributions.

**Source:** U.S. Census Bureau, Census 2010 Summary File 1. Esri converted Census 2000 data into 2010 geography.





## 2010 Census Profile

MN-13 N, Saint Paul, Minnesota, 55122  
Ring: 3 mile radius

Prepared by Esri  
Latitude: 44.81506  
Longitude: -93.22112

### Households by Type

Total	25,299	100.0%
Households with 1 Person	7,734	30.6%
Households with 2+ People	17,565	69.4%
Family Households	15,507	61.3%
Husband-wife Families	11,876	46.9%
With Own Children	4,886	19.3%
Other Family (No Spouse Present)	3,631	14.4%
With Own Children	2,004	7.9%
Nonfamily Households	2,058	8.1%
All Households with Children	7,383	29.2%
Multigenerational Households	596	2.4%
Unmarried Partner Households	1,704	6.7%
Male-female	1,548	6.1%
Same-sex	156	0.6%
Average Household Size	2.38	

### Family Households by Size

Total	15,506	100.0%
2 People	6,912	44.6%
3 People	3,652	23.6%
4 People	2,944	19.0%
5 People	1,247	8.0%
6 People	440	2.8%
7+ People	311	2.0%
Average Family Size	3.00	

### Nonfamily Households by Size

Total	9,791	100.0%
1 Person	7,734	79.0%
2 People	1,730	17.7%
3 People	215	2.2%
4 People	87	0.9%
5 People	14	0.1%
6 People	6	0.1%
7+ People	5	0.1%
Average Nonfamily Size	1.26	

### Population by Relationship and Household Type

Total	60,466	100.0%
In Households	60,127	99.4%
In Family Households	47,786	79.0%
Householder	15,479	25.6%
Spouse	11,858	19.6%
Child	17,170	28.4%
Other relative	2,080	3.4%
Nonrelative	1,201	2.0%
In Nonfamily Households	12,341	20.4%
In Group Quarters	339	0.6%
Institutionalized Population	172	0.3%
Noninstitutionalized Population	167	0.3%

**Data Note:** Households with children include any households with people under age 18, related or not. Multigenerational households are families with 3 or more parent-child relationships. Unmarried partner households are usually classified as nonfamily households unless there is another member of the household related to the householder. Multigenerational and unmarried partner households are reported only to the tract level. Esri estimated block group data, which is used to estimate polygons or non-standard geography. Average family size excludes nonrelatives.

**Source:** U.S. Census Bureau, Census 2010 Summary File 1.

Family Households by Age of Householder		
Total	15,507	100.0%
Householder Age 15 - 44	6,357	41.0%
Householder Age 45 - 54	3,768	24.3%
Householder Age 55 - 64	2,842	18.3%
Householder Age 65 - 74	1,522	9.8%
Householder Age 75+	1,018	6.6%
Nonfamily Households by Age of Householder		
Total	9,793	100.0%
Householder Age 15 - 44	4,118	42.1%
Householder Age 45 - 54	1,895	19.4%
Householder Age 55 - 64	1,672	17.1%
Householder Age 65 - 74	1,023	10.4%
Householder Age 75+	1,085	11.1%
Households by Race of Householder		
Total	25,299	100.0%
Householder is White Alone	21,274	84.1%
Householder is Black Alone	1,736	6.9%
Householder is American Indian Alone	83	0.3%
Householder is Asian Alone	1,356	5.4%
Householder is Pacific Islander Alone	10	0.0%
Householder is Some Other Race Alone	443	1.8%
Householder is Two or More Races	397	1.6%
Households with Hispanic Householder	973	3.8%
Husband-wife Families by Race of Householder		
Total	11,877	100.0%
Householder is White Alone	10,107	85.1%
Householder is Black Alone	593	5.0%
Householder is American Indian Alone	26	0.2%
Householder is Asian Alone	810	6.8%
Householder is Pacific Islander Alone	6	0.1%
Householder is Some Other Race Alone	202	1.7%
Householder is Two or More Races	133	1.1%
Husband-wife Families with Hispanic Householder	454	3.8%
Other Families (No Spouse) by Race of Householder		
Total	3,630	100.0%
Householder is White Alone	2,517	69.3%
Householder is Black Alone	591	16.3%
Householder is American Indian Alone	19	0.5%
Householder is Asian Alone	238	6.6%
Householder is Pacific Islander Alone	4	0.1%
Householder is Some Other Race Alone	129	3.6%
Householder is Two or More Races	132	3.6%
Other Families with Hispanic Householder	276	7.6%
Nonfamily Households by Race of Householder		
Total	9,792	100.0%
Householder is White Alone	8,650	88.3%
Householder is Black Alone	552	5.6%
Householder is American Indian Alone	38	0.4%
Householder is Asian Alone	309	3.2%
Householder is Pacific Islander Alone	0	0.0%
Householder is Some Other Race Alone	111	1.1%
Householder is Two or More Races	132	1.3%
Nonfamily Households with Hispanic Householder	243	2.5%

Source: U.S. Census Bureau, Census 2010 Summary File 1.



## 2010 Census Profile

MN-13 N, Saint Paul, Minnesota, 55122  
Ring: 3 mile radius

Prepared by Esri  
Latitude: 44.81506  
Longitude: -93.22112

### Total Housing Units by Occupancy

Total	26,714	100.0%
Occupied Housing Units	25,299	94.7%
Vacant Housing Units		
For Rent	709	2.7%
Rented, not Occupied	25	0.1%
For Sale Only	297	1.1%
Sold, not Occupied	51	0.2%
For Seasonal/Recreational/Occasional Use	154	0.6%
For Migrant Workers	2	0.0%
Other Vacant	177	0.7%
Total Vacancy Rate	5.3%	

### Households by Tenure and Mortgage Status

Total	25,299	100.0%
Owner Occupied	17,740	70.1%
Owned with a Mortgage/Loan	14,102	55.7%
Owned Free and Clear	3,638	14.4%
Average Household Size	2.46	
Renter Occupied	7,559	29.9%
Average Household Size	2.17	

### Owner-occupied Housing Units by Race of Householder

Total	17,740	100.0%
Householder is White Alone	15,987	90.1%
Householder is Black Alone	518	2.9%
Householder is American Indian Alone	32	0.2%
Householder is Asian Alone	880	5.0%
Householder is Pacific Islander Alone	7	0.0%
Householder is Some Other Race Alone	146	0.8%
Householder is Two or More Races	170	1.0%
Owner-occupied Housing Units with Hispanic Householder	401	2.3%

### Renter-occupied Housing Units by Race of Householder

Total	7,559	100.0%
Householder is White Alone	5,287	69.9%
Householder is Black Alone	1,218	16.1%
Householder is American Indian Alone	51	0.7%
Householder is Asian Alone	477	6.3%
Householder is Pacific Islander Alone	3	0.0%
Householder is Some Other Race Alone	297	3.9%
Householder is Two or More Races	226	3.0%
Renter-occupied Housing Units with Hispanic Householder	573	7.6%

### Average Household Size by Race/Hispanic Origin of Householder

Householder is White Alone	2.24
Householder is Black Alone	2.92
Householder is American Indian Alone	2.24
Householder is Asian Alone	3.17
Householder is Pacific Islander Alone	3.70
Householder is Some Other Race Alone	3.77
Householder is Two or More Races	2.78
Householder is Hispanic	3.47

Source: U.S. Census Bureau, Census 2010 Summary File 1.



## 2010 Census Profile

MN-13 N, Saint Paul, Minnesota, 55122  
Ring: 5 mile radius

Prepared by Esri  
Latitude: 44.81506  
Longitude: -93.22112

	2000	2010	2000-2010 Annual Rate
Population	163,277	164,281	0.06%
Households	64,930	66,504	0.24%
Housing Units	66,373	70,029	0.54%
<b>Population by Race</b>			
Total		164,281	100.0%
Population Reporting One Race		158,827	96.7%
White		126,886	77.2%
Black		13,239	8.1%
American Indian		736	0.4%
Asian		10,755	6.5%
Pacific Islander		116	0.1%
Some Other Race		7,095	4.3%
Population Reporting Two or More Races		5,454	3.3%
Total Hispanic Population		13,894	8.5%
<b>Population by Sex</b>			
Male		80,621	49.1%
Female		83,660	50.9%
<b>Population by Age</b>			
Total		164,279	100.0%
Age 0 - 4		10,839	6.6%
Age 5 - 9		10,342	6.3%
Age 10 - 14		10,401	6.3%
Age 15 - 19		10,457	6.4%
Age 20 - 24		10,027	6.1%
Age 25 - 29		13,288	8.1%
Age 30 - 34		11,588	7.1%
Age 35 - 39		10,489	6.4%
Age 40 - 44		10,789	6.6%
Age 45 - 49		13,190	8.0%
Age 50 - 54		13,541	8.2%
Age 55 - 59		11,165	6.8%
Age 60 - 64		8,602	5.2%
Age 65 - 69		6,073	3.7%
Age 70 - 74		4,347	2.6%
Age 75 - 79		3,448	2.1%
Age 80 - 84		2,885	1.8%
Age 85+		2,811	1.7%
Age 18+		125,852	76.6%
Age 65+		19,564	11.9%

**Data Note:** Hispanic population can be of any race. Census 2010 medians are computed from reported data distributions.

**Source:** U.S. Census Bureau, Census 2010 Summary File 1. Esri converted Census 2000 data into 2010 geography.



## 2010 Census Profile

MN-13 N, Saint Paul, Minnesota, 55122  
Ring: 5 mile radius

Prepared by Esri  
Latitude: 44.81506  
Longitude: -93.22112

### Households by Type

Total	66,504	100.0%
Households with 1 Person	19,296	29.0%
Households with 2+ People	47,208	71.0%
Family Households	42,165	63.4%
Husband-wife Families	32,272	48.5%
With Own Children	13,563	20.4%
Other Family (No Spouse Present)	9,893	14.9%
With Own Children	5,486	8.2%
Nonfamily Households	5,043	7.6%
All Households with Children	20,450	30.8%
Multigenerational Households	1,671	2.5%
Unmarried Partner Households	4,341	6.5%
Male-female	3,910	5.9%
Same-sex	431	0.6%
Average Household Size	2.45	

### Family Households by Size

Total	42,165	100.0%
2 People	18,337	43.5%
3 People	9,788	23.2%
4 People	8,305	19.7%
5 People	3,512	8.3%
6 People	1,304	3.1%
7+ People	919	2.2%
Average Family Size	3.05	

### Nonfamily Households by Size

Total	24,339	100.0%
1 Person	19,296	79.3%
2 People	4,177	17.2%
3 People	569	2.3%
4 People	224	0.9%
5 People	41	0.2%
6 People	24	0.1%
7+ People	8	0.0%
Average Nonfamily Size	1.26	

### Population by Relationship and Household Type

Total	164,281	100.0%
In Households	162,933	99.2%
In Family Households	132,204	80.5%
Householder	42,195	25.7%
Spouse	32,290	19.7%
Child	48,310	29.4%
Other relative	5,807	3.5%
Nonrelative	3,602	2.2%
In Nonfamily Households	30,729	18.7%
In Group Quarters	1,348	0.8%
Institutionalized Population	639	0.4%
Noninstitutionalized Population	709	0.4%

**Data Note:** Households with children include any households with people under age 18, related or not. Multigenerational households are families with 3 or more parent-child relationships. Unmarried partner households are usually classified as nonfamily households unless there is another member of the household related to the householder. Multigenerational and unmarried partner households are reported only to the tract level. Esri estimated block group data, which is used to estimate polygons or non-standard geography. Average family size excludes nonrelatives.

**Source:** U.S. Census Bureau, Census 2010 Summary File 1.





## 2010 Census Profile

MN-13 N, Saint Paul, Minnesota, 55122  
Ring: 5 mile radius

Prepared by Esri  
Latitude: 44.81506  
Longitude: -93.22112

### Family Households by Age of Householder

Total	42,167	100.0%
Householder Age 15 - 44	16,777	39.8%
Householder Age 45 - 54	10,815	25.6%
Householder Age 55 - 64	7,830	18.6%
Householder Age 65 - 74	4,009	9.5%
Householder Age 75+	2,736	6.5%

### Nonfamily Households by Age of Householder

Total	24,340	100.0%
Householder Age 15 - 44	9,535	39.2%
Householder Age 45 - 54	4,563	18.7%
Householder Age 55 - 64	4,157	17.1%
Householder Age 65 - 74	2,532	10.4%
Householder Age 75+	3,553	14.6%

### Households by Race of Householder

Total	66,504	100.0%
Householder is White Alone	55,790	83.9%
Householder is Black Alone	4,435	6.7%
Householder is American Indian Alone	258	0.4%
Householder is Asian Alone	3,300	5.0%
Householder is Pacific Islander Alone	35	0.1%
Householder is Some Other Race Alone	1,616	2.4%
Householder is Two or More Races	1,070	1.6%
Households with Hispanic Householder	3,327	5.0%

### Husband-wife Families by Race of Householder

Total	32,272	100.0%
Householder is White Alone	27,536	85.3%
Householder is Black Alone	1,431	4.4%
Householder is American Indian Alone	87	0.3%
Householder is Asian Alone	1,970	6.1%
Householder is Pacific Islander Alone	23	0.1%
Householder is Some Other Race Alone	844	2.6%
Householder is Two or More Races	381	1.2%
Husband-wife Families with Hispanic Householder	1,702	5.3%

### Other Families (No Spouse) by Race of Householder

Total	9,893	100.0%
Householder is White Alone	6,845	69.2%
Householder is Black Alone	1,581	16.0%
Householder is American Indian Alone	80	0.8%
Householder is Asian Alone	561	5.7%
Householder is Pacific Islander Alone	6	0.1%
Householder is Some Other Race Alone	483	4.9%
Householder is Two or More Races	337	3.4%
Other Families with Hispanic Householder	955	9.7%

### Nonfamily Households by Race of Householder

Total	24,340	100.0%
Householder is White Alone	21,409	88.0%
Householder is Black Alone	1,423	5.8%
Householder is American Indian Alone	91	0.4%
Householder is Asian Alone	770	3.2%
Householder is Pacific Islander Alone	6	0.0%
Householder is Some Other Race Alone	290	1.2%
Householder is Two or More Races	351	1.4%
Nonfamily Households with Hispanic Householder	671	2.8%

Source: U.S. Census Bureau, Census 2010 Summary File 1.



## 2010 Census Profile

MN-13 N, Saint Paul, Minnesota, 55122  
Ring: 5 mile radius

Prepared by Esri  
Latitude: 44.81506  
Longitude: -93.22112

### Total Housing Units by Occupancy

Total	70,012	100.0%
Occupied Housing Units	66,504	95.0%
Vacant Housing Units		
For Rent	1,745	2.5%
Rented, not Occupied	66	0.1%
For Sale Only	777	1.1%
Sold, not Occupied	122	0.2%
For Seasonal/Recreational/Occasional Use	339	0.5%
For Migrant Workers	2	0.0%
Other Vacant	457	0.7%
Total Vacancy Rate	5.0%	

### Households by Tenure and Mortgage Status

Total	66,504	100.0%
Owner Occupied	45,660	68.7%
Owned with a Mortgage/Loan	35,886	54.0%
Owned Free and Clear	9,774	14.7%
Average Household Size	2.56	
Renter Occupied	20,844	31.3%
Average Household Size	2.22	

### Owner-occupied Housing Units by Race of Householder

Total	45,661	100.0%
Householder is White Alone	41,368	90.6%
Householder is Black Alone	1,155	2.5%
Householder is American Indian Alone	114	0.2%
Householder is Asian Alone	1,987	4.4%
Householder is Pacific Islander Alone	26	0.1%
Householder is Some Other Race Alone	554	1.2%
Householder is Two or More Races	457	1.0%
Owner-occupied Housing Units with Hispanic Householder	1,242	2.7%

### Renter-occupied Housing Units by Race of Householder

Total	20,845	100.0%
Householder is White Alone	14,422	69.2%
Householder is Black Alone	3,280	15.7%
Householder is American Indian Alone	144	0.7%
Householder is Asian Alone	1,314	6.3%
Householder is Pacific Islander Alone	9	0.0%
Householder is Some Other Race Alone	1,063	5.1%
Householder is Two or More Races	613	2.9%
Renter-occupied Housing Units with Hispanic Householder	2,086	10.0%

### Average Household Size by Race/Hispanic Origin of Householder

Householder is White Alone	2.31
Householder is Black Alone	2.92
Householder is American Indian Alone	2.68
Householder is Asian Alone	3.16
Householder is Pacific Islander Alone	3.14
Householder is Some Other Race Alone	4.26
Householder is Two or More Races	2.83
Householder is Hispanic	3.88

Source: U.S. Census Bureau, Census 2010 Summary File 1.



## Demographic and Income Profile

MN-13 N, Saint Paul, Minnesota, 55122  
Ring: 1 mile radius

Prepared by Esri  
Latitude: 44.81506  
Longitude: -93.22112

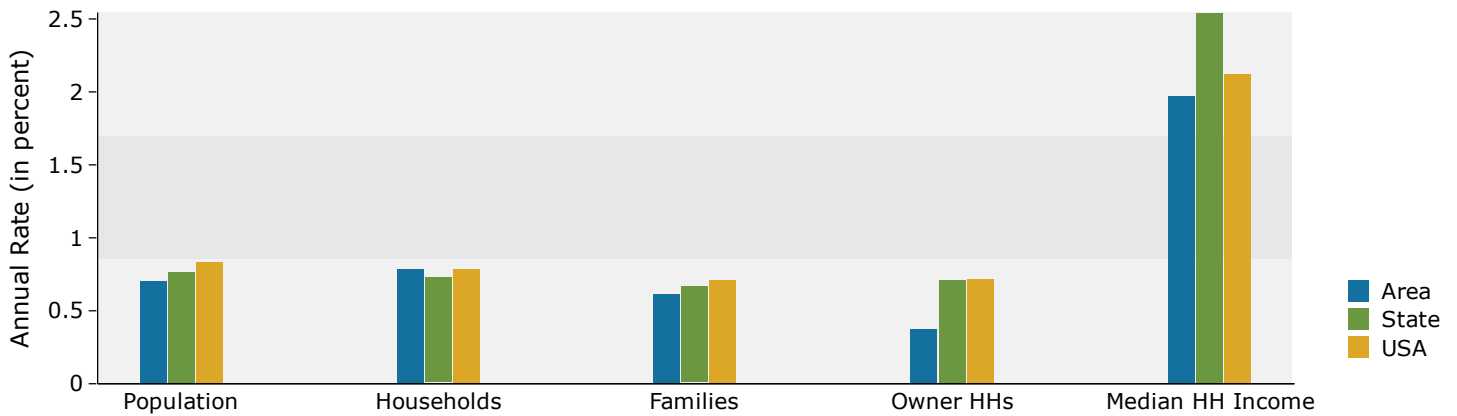
Summary	Census 2010	2017	2022				
Population	5,302	5,794	5,999				
Households	2,447	2,686	2,794				
Families	1,416	1,524	1,571				
Average Household Size	2.16	2.15	2.14				
Owner Occupied Housing Units	1,528	1,586	1,616				
Renter Occupied Housing Units	919	1,099	1,178				
Median Age	34.1	35.7	35.9				
Trends: 2017 - 2022 Annual Rate	Area	State	National				
Population	0.70%	0.76%	0.83%				
Households	0.79%	0.73%	0.79%				
Families	0.61%	0.67%	0.71%				
Owner HHs	0.38%	0.71%	0.72%				
Median Household Income	1.97%	2.54%	2.12%				
Households by Income	2017		2022				
	Number	Percent	Number	Percent			
	<\$15,000	171	6.4%	179	6.4%		
	\$15,000 - \$24,999	161	6.0%	158	5.7%		
	\$25,000 - \$34,999	246	9.2%	231	8.3%		
	\$35,000 - \$49,999	456	17.0%	430	15.4%		
	\$50,000 - \$74,999	540	20.1%	504	18.0%		
	\$75,000 - \$99,999	377	14.0%	393	14.1%		
	\$100,000 - \$149,999	399	14.9%	482	17.3%		
	\$150,000 - \$199,999	230	8.6%	284	10.2%		
	\$200,000+	105	3.9%	133	4.8%		
	Median Household Income	\$61,791		\$68,122			
Average Household Income	\$82,323		\$92,733				
Per Capita Income	\$36,136		\$40,887				
Population by Age	Census 2010		2017		2022		
	Number	Percent	Number	Percent	Number	Percent	
	0 - 4	371	7.0%	375	6.5%	394	6.6%
	5 - 9	320	6.0%	357	6.2%	353	5.9%
	10 - 14	282	5.3%	336	5.8%	337	5.6%
	15 - 19	312	5.9%	307	5.3%	327	5.5%
	20 - 24	418	7.9%	413	7.1%	447	7.5%
	25 - 34	1,036	19.5%	1,039	17.9%	1,054	17.6%
	35 - 44	700	13.2%	862	14.9%	895	14.9%
	45 - 54	768	14.5%	734	12.7%	683	11.4%
	55 - 64	489	9.2%	641	11.1%	689	11.5%
	65 - 74	347	6.5%	399	6.9%	442	7.4%
	75 - 84	191	3.6%	240	4.1%	276	4.6%
	85+	68	1.3%	89	1.5%	101	1.7%
	Race and Ethnicity	Census 2010		2017		2022	
Number		Percent	Number	Percent	Number	Percent	
White Alone		4,136	78.0%	4,210	72.7%	4,090	68.2%
Black Alone		447	8.4%	671	11.6%	866	14.4%
American Indian Alone		18	0.3%	21	0.4%	21	0.4%
Asian Alone		390	7.4%	484	8.4%	541	9.0%
Pacific Islander Alone		11	0.2%	12	0.2%	13	0.2%
Some Other Race Alone		123	2.3%	166	2.9%	199	3.3%
Two or More Races		177	3.3%	230	4.0%	269	4.5%
Hispanic Origin (Any Race)		278	5.2%	367	6.3%	442	7.4%

**Data Note:** Income is expressed in current dollars.

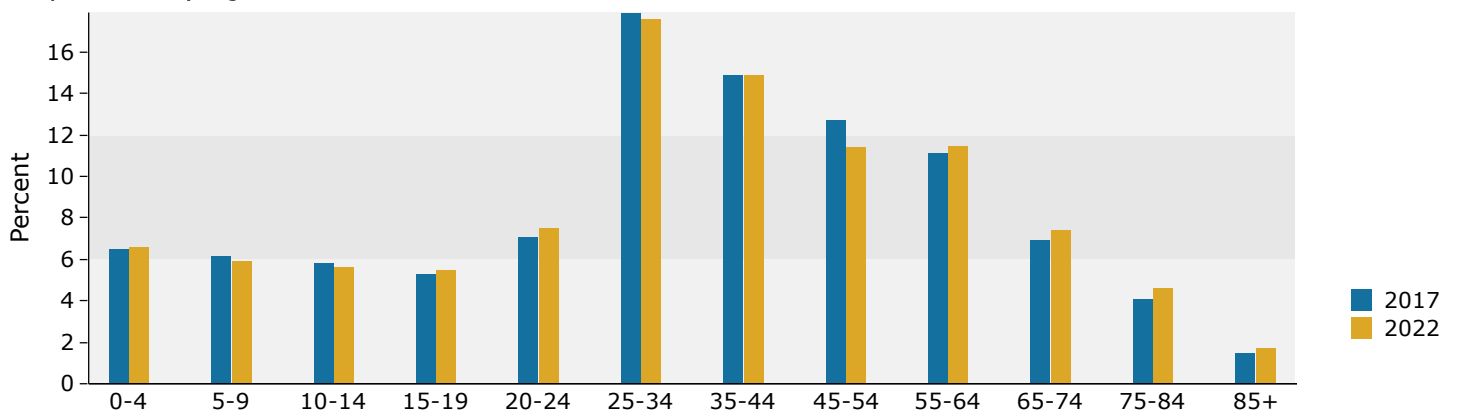
**Source:** U.S. Census Bureau, Census 2010 Summary File 1. Esri forecasts for 2017 and 2022.

August 08, 2017

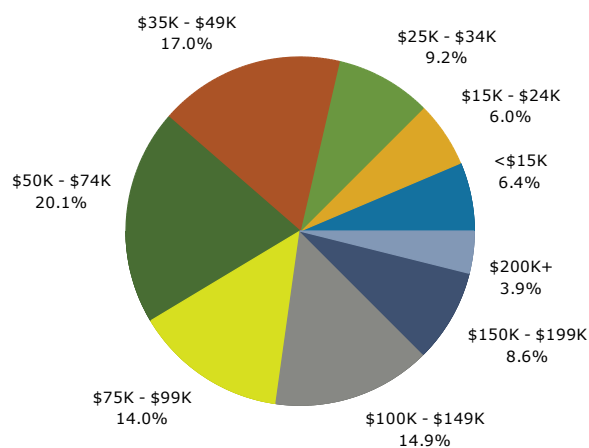
## Trends 2017-2022



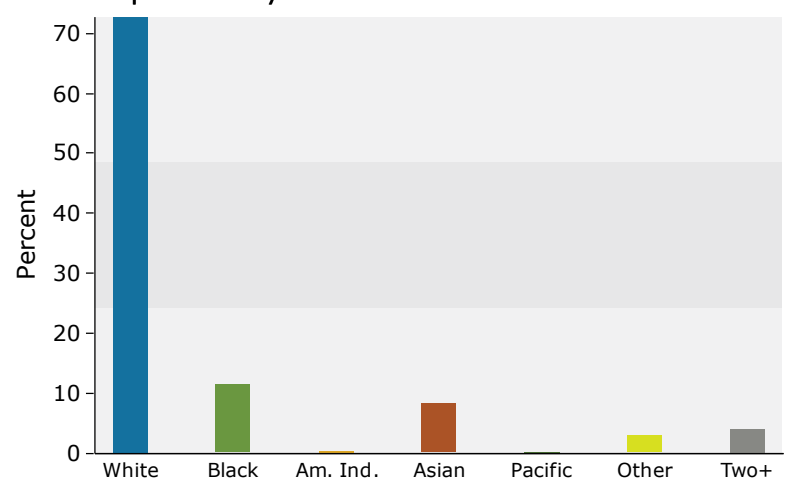
## Population by Age



## 2017 Household Income



## 2017 Population by Race



2017 Percent Hispanic Origin: 6.3%



## Demographic and Income Profile

MN-13 N, Saint Paul, Minnesota, 55122  
Ring: 3 mile radius

Prepared by Esri  
Latitude: 44.81506  
Longitude: -93.22112

Summary	Census 2010	2017	2022				
Population	60,466	63,088	64,792				
Households	25,299	26,441	27,189				
Families	15,507	16,007	16,352				
Average Household Size	2.38	2.37	2.37				
Owner Occupied Housing Units	17,740	17,973	18,368				
Renter Occupied Housing Units	7,559	8,468	8,821				
Median Age	37.4	38.6	39.6				
Trends: 2017 - 2022 Annual Rate	Area	State	National				
Population	0.53%	0.76%	0.83%				
Households	0.56%	0.73%	0.79%				
Families	0.43%	0.67%	0.71%				
Owner HHs	0.44%	0.71%	0.72%				
Median Household Income	1.93%	2.54%	2.12%				
Households by Income	2017		2022				
	Number	Percent	Number	Percent			
	<\$15,000	1,250	4.7%	1,315	4.8%		
	\$15,000 - \$24,999	1,677	6.3%	1,649	6.1%		
	\$25,000 - \$34,999	2,060	7.8%	1,918	7.1%		
	\$35,000 - \$49,999	3,749	14.2%	3,497	12.9%		
	\$50,000 - \$74,999	5,332	20.2%	4,902	18.0%		
	\$75,000 - \$99,999	3,756	14.2%	3,814	14.0%		
	\$100,000 - \$149,999	4,593	17.4%	5,362	19.7%		
	\$150,000 - \$199,999	2,185	8.3%	2,563	9.4%		
	\$200,000+	1,839	7.0%	2,169	8.0%		
Median Household Income	\$69,583		\$76,551				
Average Household Income	\$93,643		\$104,429				
Per Capita Income	\$39,306		\$43,876				
Population by Age	Census 2010		2017		2022		
	Number	Percent	Number	Percent	Number	Percent	
	0 - 4	4,039	6.7%	3,825	6.1%	3,919	6.0%
	5 - 9	3,714	6.1%	3,882	6.2%	3,761	5.8%
	10 - 14	3,550	5.9%	3,765	6.0%	3,851	5.9%
	15 - 19	3,582	5.9%	3,375	5.3%	3,548	5.5%
	20 - 24	3,653	6.0%	3,764	6.0%	3,764	5.8%
	25 - 34	9,831	16.3%	9,551	15.1%	9,247	14.3%
	35 - 44	7,972	13.2%	8,660	13.7%	9,273	14.3%
	45 - 54	9,659	16.0%	8,280	13.1%	7,823	12.1%
	55 - 64	7,347	12.2%	8,624	13.7%	8,392	13.0%
	65 - 74	4,026	6.7%	5,571	8.8%	6,597	10.2%
	75 - 84	2,236	3.7%	2,698	4.3%	3,435	5.3%
	85+	857	1.4%	1,093	1.7%	1,183	1.8%
Race and Ethnicity	Census 2010		2017		2022		
	Number	Percent	Number	Percent	Number	Percent	
	White Alone	46,886	77.5%	46,128	73.1%	44,870	69.3%
	Black Alone	5,173	8.6%	6,921	11.0%	8,539	13.2%
	American Indian Alone	213	0.4%	233	0.4%	241	0.4%
	Asian Alone	4,418	7.3%	5,294	8.4%	5,966	9.2%
	Pacific Islander Alone	51	0.1%	54	0.1%	54	0.1%
	Some Other Race Alone	1,730	2.9%	2,043	3.2%	2,360	3.6%
	Two or More Races	1,995	3.3%	2,417	3.8%	2,761	4.3%
	Hispanic Origin (Any Race)	3,724	6.2%	4,419	7.0%	5,134	7.9%

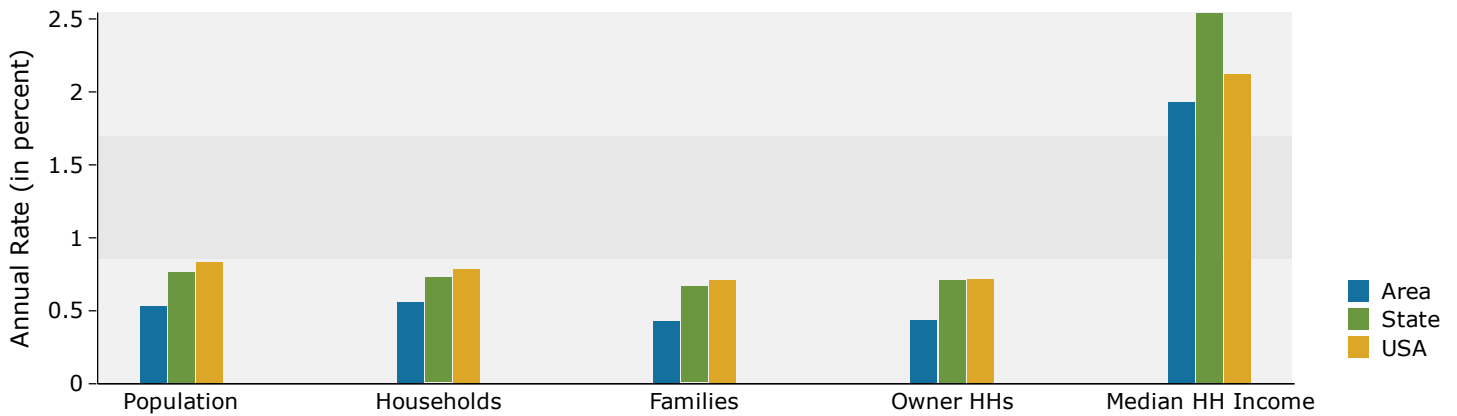
**Data Note:** Income is expressed in current dollars.

**Source:** U.S. Census Bureau, Census 2010 Summary File 1. Esri forecasts for 2017 and 2022.

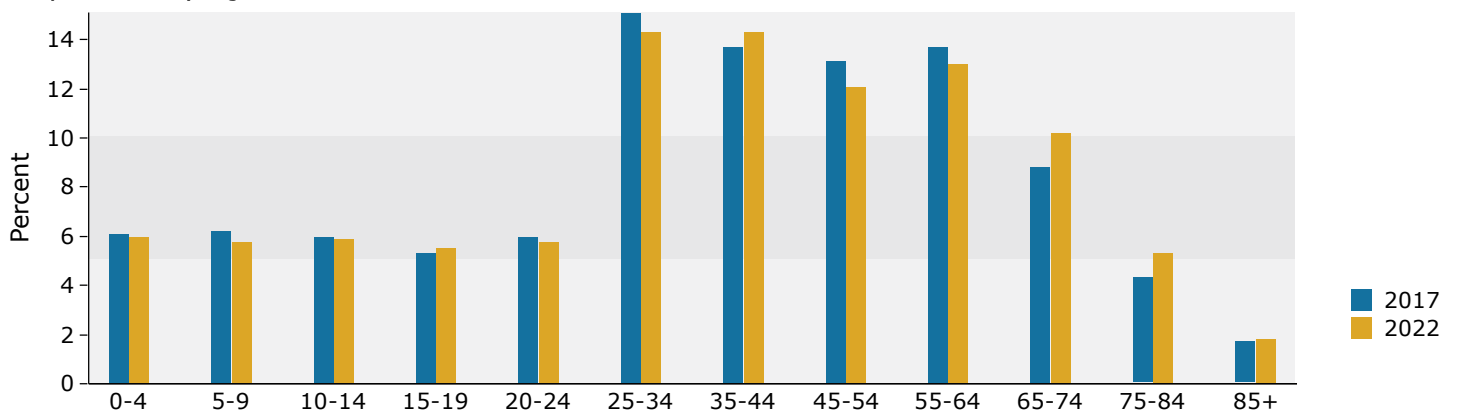
August 08, 2017



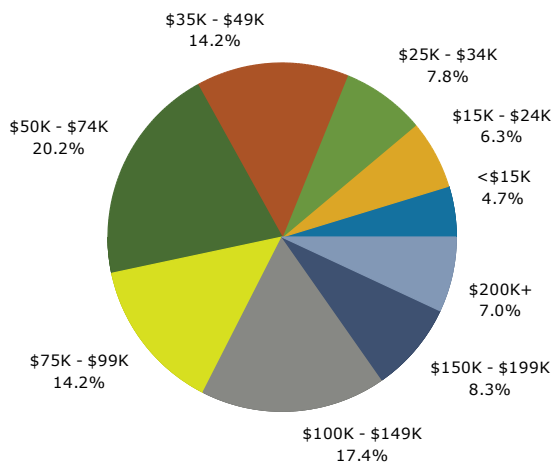
## Trends 2017-2022



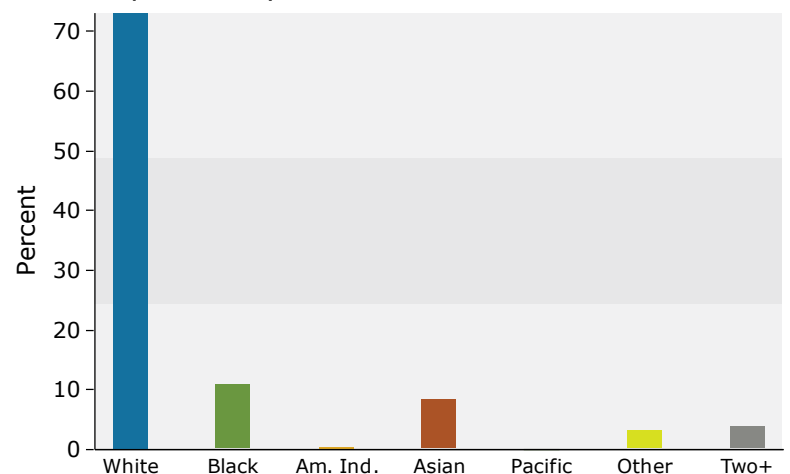
## Population by Age



## 2017 Household Income



## 2017 Population by Race



2017 Percent Hispanic Origin: 7.0%



## Demographic and Income Profile

MN-13 N, Saint Paul, Minnesota, 55122  
Ring: 5 mile radius

Prepared by Esri  
Latitude: 44.81506  
Longitude: -93.22112

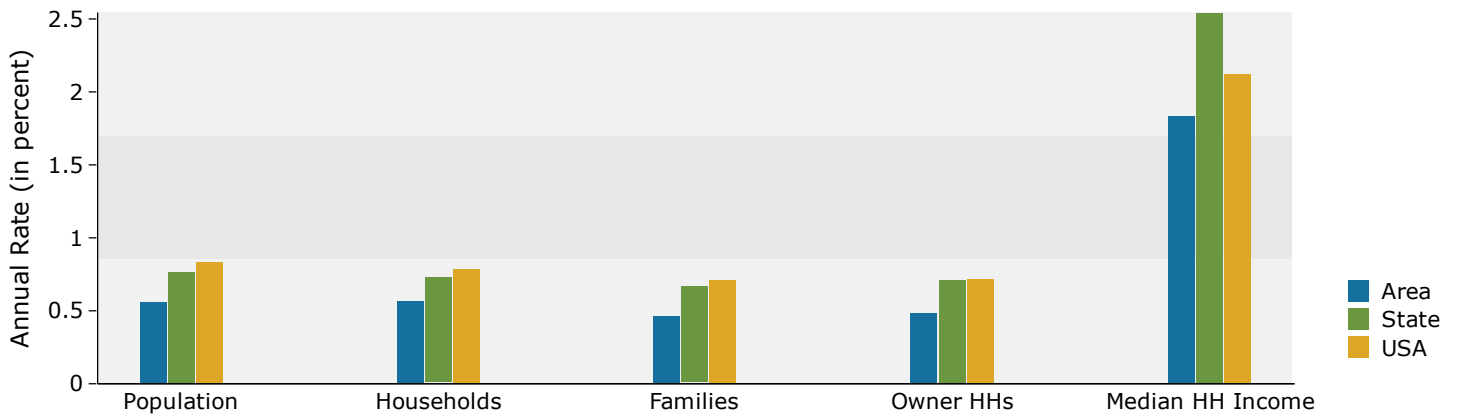
Summary	Census 2010	2017	2022				
Population	164,281	171,692	176,555				
Households	66,504	69,407	71,394				
Families	42,165	43,589	44,603				
Average Household Size	2.45	2.45	2.45				
Owner Occupied Housing Units	45,660	46,384	47,518				
Renter Occupied Housing Units	20,844	23,024	23,877				
Median Age	37.5	38.7	39.8				
Trends: 2017 - 2022 Annual Rate	Area	State	National				
Population	0.56%	0.76%	0.83%				
Households	0.57%	0.73%	0.79%				
Families	0.46%	0.67%	0.71%				
Owner HHs	0.48%	0.71%	0.72%				
Median Household Income	1.83%	2.54%	2.12%				
Households by Income	2017		2022				
	Number	Percent	Number	Percent			
	<\$15,000	3,796	5.5%	3,993	5.6%		
	\$15,000 - \$24,999	5,146	7.4%	5,089	7.1%		
	\$25,000 - \$34,999	5,451	7.9%	5,081	7.1%		
	\$35,000 - \$49,999	8,919	12.9%	8,350	11.7%		
	\$50,000 - \$74,999	13,363	19.3%	12,329	17.3%		
	\$75,000 - \$99,999	9,897	14.3%	10,060	14.1%		
	\$100,000 - \$149,999	12,274	17.7%	14,173	19.9%		
	\$150,000 - \$199,999	5,651	8.1%	6,602	9.2%		
\$200,000+	4,909	7.1%	5,717	8.0%			
Median Household Income	\$69,979		\$76,603				
Average Household Income	\$93,578		\$103,943				
Per Capita Income	\$38,015		\$42,220				
Population by Age	Census 2010		2017		2022		
	Number	Percent	Number	Percent	Number	Percent	
	0 - 4	10,839	6.6%	10,303	6.0%	10,554	6.0%
	5 - 9	10,342	6.3%	10,630	6.2%	10,330	5.9%
	10 - 14	10,401	6.3%	10,684	6.2%	10,864	6.2%
	15 - 19	10,457	6.4%	9,728	5.7%	10,056	5.7%
	20 - 24	10,027	6.1%	10,007	5.8%	9,565	5.4%
	25 - 34	24,876	15.1%	25,408	14.8%	24,443	13.8%
	35 - 44	21,278	13.0%	22,807	13.3%	25,163	14.3%
	45 - 54	26,731	16.3%	22,823	13.3%	21,556	12.2%
	55 - 64	19,767	12.0%	23,732	13.8%	23,391	13.2%
	65 - 74	10,420	6.3%	14,815	8.6%	17,888	10.1%
	75 - 84	6,333	3.9%	7,261	4.2%	9,128	5.2%
	85+	2,811	1.7%	3,493	2.0%	3,615	2.0%
Race and Ethnicity	Census 2010		2017		2022		
	Number	Percent	Number	Percent	Number	Percent	
	White Alone	126,886	77.2%	125,797	73.3%	123,164	69.8%
	Black Alone	13,239	8.1%	17,124	10.0%	20,708	11.7%
	American Indian Alone	736	0.4%	780	0.5%	803	0.5%
	Asian Alone	10,755	6.5%	13,089	7.6%	14,925	8.5%
	Pacific Islander Alone	116	0.1%	131	0.1%	137	0.1%
	Some Other Race Alone	7,095	4.3%	8,229	4.8%	9,383	5.3%
	Two or More Races	5,454	3.3%	6,541	3.8%	7,434	4.2%
	Hispanic Origin (Any Race)	13,894	8.5%	16,123	9.4%	18,420	10.4%

**Data Note:** Income is expressed in current dollars.

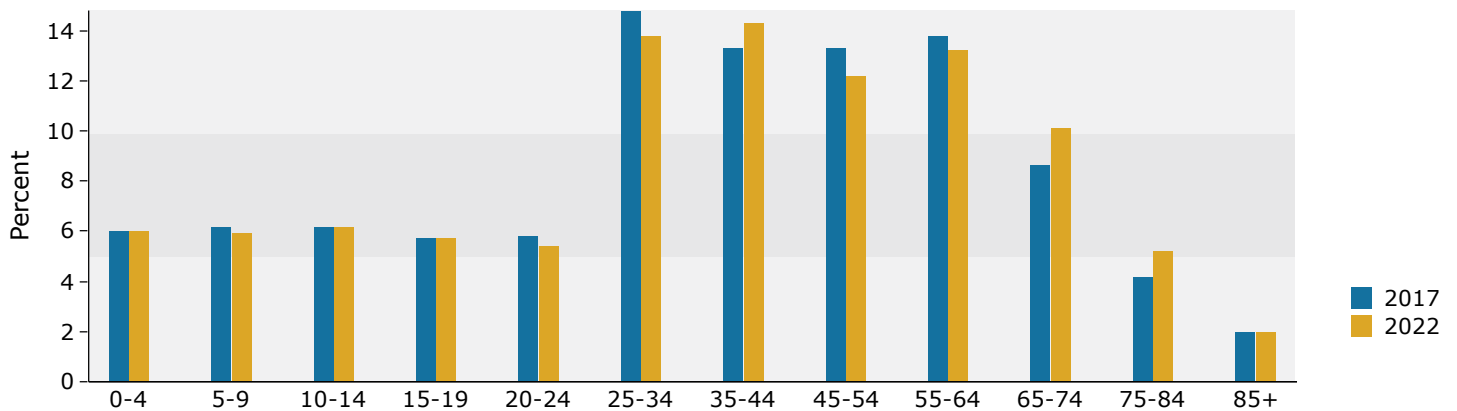
**Source:** U.S. Census Bureau, Census 2010 Summary File 1. Esri forecasts for 2017 and 2022.

August 08, 2017

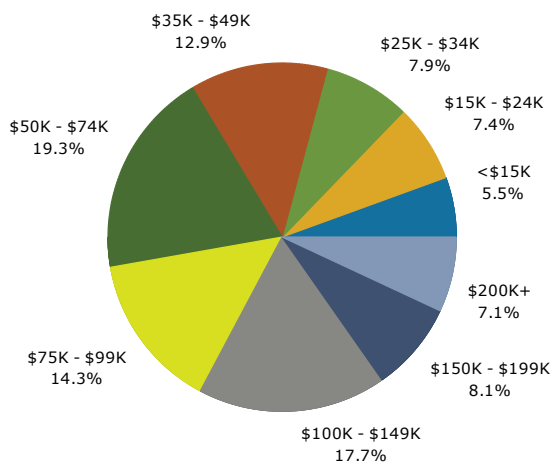
## Trends 2017-2022



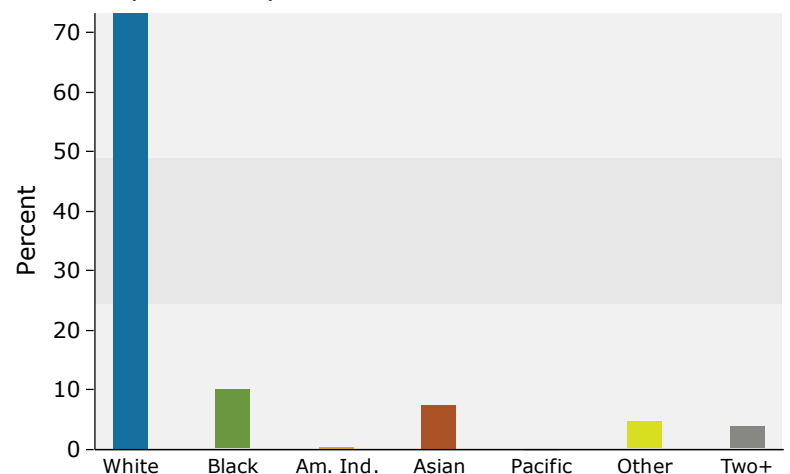
## Population by Age



## 2017 Household Income



## 2017 Population by Race



2017 Percent Hispanic Origin: 9.4%



## Market Profile

MN-13 N, Saint Paul, Minnesota, 55122  
Rings: 1, 3, 5 mile radii

Prepared by Esri  
Latitude: 44.81506  
Longitude: -93.22112

	1 mile	3 miles	5 miles
<b>Population Summary</b>			
2000 Total Population	5,174	60,489	163,277
2010 Total Population	5,302	60,466	164,281
2017 Total Population	5,794	63,088	171,692
2017 Group Quarters	14	339	1,357
2022 Total Population	5,999	64,792	176,555
2017-2022 Annual Rate	0.70%	0.53%	0.56%
2017 Total Daytime Population	4,798	69,541	199,734
Workers	2,403	41,739	121,227
Residents	2,395	27,802	78,507
<b>Household Summary</b>			
2000 Households	2,308	24,869	64,930
2000 Average Household Size	2.24	2.42	2.49
2010 Households	2,447	25,299	66,504
2010 Average Household Size	2.16	2.38	2.45
2017 Households	2,686	26,441	69,407
2017 Average Household Size	2.15	2.37	2.45
2022 Households	2,794	27,189	71,394
2022 Average Household Size	2.14	2.37	2.45
2017-2022 Annual Rate	0.79%	0.56%	0.57%
2010 Families	1,416	15,507	42,165
2010 Average Family Size	2.83	3.00	3.05
2017 Families	1,524	16,007	43,589
2017 Average Family Size	2.83	3.01	3.06
2022 Families	1,571	16,352	44,603
2022 Average Family Size	2.82	3.01	3.06
2017-2022 Annual Rate	0.61%	0.43%	0.46%
<b>Housing Unit Summary</b>			
2000 Housing Units	2,351	25,366	66,373
Owner Occupied Housing Units	61.5%	69.3%	69.0%
Renter Occupied Housing Units	36.7%	28.7%	28.8%
Vacant Housing Units	1.8%	2.0%	2.2%
2010 Housing Units	2,623	26,720	70,029
Owner Occupied Housing Units	58.3%	66.4%	65.2%
Renter Occupied Housing Units	35.0%	28.3%	29.8%
Vacant Housing Units	6.7%	5.3%	5.0%
2017 Housing Units	2,874	27,840	72,810
Owner Occupied Housing Units	55.2%	64.6%	63.7%
Renter Occupied Housing Units	38.2%	30.4%	31.6%
Vacant Housing Units	6.5%	5.0%	4.7%
2022 Housing Units	2,987	28,647	74,856
Owner Occupied Housing Units	54.1%	64.1%	63.5%
Renter Occupied Housing Units	39.4%	30.8%	31.9%
Vacant Housing Units	6.5%	5.1%	4.6%
<b>Median Household Income</b>			
2017	\$61,791	\$69,583	\$69,979
2022	\$68,122	\$76,551	\$76,603
<b>Median Home Value</b>			
2017	\$214,292	\$230,698	\$237,191
2022	\$226,645	\$256,105	\$260,553
<b>Per Capita Income</b>			
2017	\$36,136	\$39,306	\$38,015
2022	\$40,887	\$43,876	\$42,220
<b>Median Age</b>			
2010	34.1	37.4	37.5
2017	35.7	38.6	38.7
2022	35.9	39.6	39.8

**Data Note:** Household population includes persons not residing in group quarters. Average Household Size is the household population divided by total households. Persons in families include the householder and persons related to the householder by birth, marriage, or adoption. Per Capita Income represents the income received by all persons aged 15 years and over divided by the total population.

**Source:** U.S. Census Bureau, Census 2010 Summary File 1. Esri forecasts for 2017 and 2022 Esri converted Census 2000 data into 2010 geography.

August 08, 2017



## Market Profile

MN-13 N, Saint Paul, Minnesota, 55122  
Rings: 1, 3, 5 mile radii

Prepared by Esri  
Latitude: 44.81506  
Longitude: -93.22112

	1 mile	3 miles	5 miles
<b>2017 Households by Income</b>			
Household Income Base	2,686	26,441	69,407
<\$15,000	6.4%	4.7%	5.5%
\$15,000 - \$24,999	6.0%	6.3%	7.4%
\$25,000 - \$34,999	9.2%	7.8%	7.9%
\$35,000 - \$49,999	17.0%	14.2%	12.9%
\$50,000 - \$74,999	20.1%	20.2%	19.3%
\$75,000 - \$99,999	14.0%	14.2%	14.3%
\$100,000 - \$149,999	14.9%	17.4%	17.7%
\$150,000 - \$199,999	8.6%	8.3%	8.1%
\$200,000+	3.9%	7.0%	7.1%
Average Household Income	\$82,323	\$93,643	\$93,578
<b>2022 Households by Income</b>			
Household Income Base	2,794	27,189	71,394
<\$15,000	6.4%	4.8%	5.6%
\$15,000 - \$24,999	5.7%	6.1%	7.1%
\$25,000 - \$34,999	8.3%	7.1%	7.1%
\$35,000 - \$49,999	15.4%	12.9%	11.7%
\$50,000 - \$74,999	18.0%	18.0%	17.3%
\$75,000 - \$99,999	14.1%	14.0%	14.1%
\$100,000 - \$149,999	17.3%	19.7%	19.9%
\$150,000 - \$199,999	10.2%	9.4%	9.2%
\$200,000+	4.8%	8.0%	8.0%
Average Household Income	\$92,733	\$104,429	\$103,943
<b>2017 Owner Occupied Housing Units by Value</b>			
Total	1,586	17,965	46,369
<\$50,000	1.3%	1.0%	2.1%
\$50,000 - \$99,999	1.1%	3.1%	3.1%
\$100,000 - \$149,999	10.8%	10.9%	8.7%
\$150,000 - \$199,999	26.9%	21.3%	19.1%
\$200,000 - \$249,999	34.3%	22.2%	22.7%
\$250,000 - \$299,999	12.9%	15.5%	16.7%
\$300,000 - \$399,999	4.4%	13.3%	15.5%
\$400,000 - \$499,999	4.9%	7.8%	7.2%
\$500,000 - \$749,999	1.5%	3.9%	3.9%
\$750,000 - \$999,999	0.8%	0.5%	0.5%
\$1,000,000 +	1.0%	0.5%	0.3%
Average Home Value	\$240,789	\$262,017	\$263,997
<b>2022 Owner Occupied Housing Units by Value</b>			
Total	1,616	18,360	47,503
<\$50,000	0.7%	0.5%	1.2%
\$50,000 - \$99,999	0.8%	2.0%	2.1%
\$100,000 - \$149,999	8.5%	8.3%	6.8%
\$150,000 - \$199,999	22.4%	17.0%	15.5%
\$200,000 - \$249,999	32.9%	20.1%	20.6%
\$250,000 - \$299,999	15.5%	17.2%	18.1%
\$300,000 - \$399,999	6.1%	16.8%	19.3%
\$400,000 - \$499,999	7.4%	10.9%	9.7%
\$500,000 - \$749,999	2.2%	5.5%	5.3%
\$750,000 - \$999,999	1.4%	0.7%	0.7%
\$1,000,000 +	2.2%	1.0%	0.7%
Average Home Value	\$274,212	\$294,840	\$292,524

**Data Note:** Income represents the preceding year, expressed in current dollars. Household income includes wage and salary earnings, interest dividends, net rents, pensions, SSI and welfare payments, child support, and alimony.

**Source:** U.S. Census Bureau, Census 2010 Summary File 1. Esri forecasts for 2017 and 2022 Esri converted Census 2000 data into 2010 geography.

August 08, 2017





## Market Profile

MN-13 N, Saint Paul, Minnesota, 55122  
Rings: 1, 3, 5 mile radii

Prepared by Esri  
Latitude: 44.81506  
Longitude: -93.22112

	1 mile	3 miles	5 miles
<b>2010 Population by Age</b>			
Total	5,301	60,467	164,279
0 - 4	7.0%	6.7%	6.6%
5 - 9	6.0%	6.1%	6.3%
10 - 14	5.3%	5.9%	6.3%
15 - 24	13.8%	12.0%	12.5%
25 - 34	19.5%	16.3%	15.1%
35 - 44	13.2%	13.2%	13.0%
45 - 54	14.5%	16.0%	16.3%
55 - 64	9.2%	12.2%	12.0%
65 - 74	6.5%	6.7%	6.3%
75 - 84	3.6%	3.7%	3.9%
85 +	1.3%	1.4%	1.7%
18 +	77.8%	77.5%	76.6%
<b>2017 Population by Age</b>			
Total	5,792	63,088	171,691
0 - 4	6.5%	6.1%	6.0%
5 - 9	6.2%	6.2%	6.2%
10 - 14	5.8%	6.0%	6.2%
15 - 24	12.4%	11.3%	11.5%
25 - 34	17.9%	15.1%	14.8%
35 - 44	14.9%	13.7%	13.3%
45 - 54	12.7%	13.1%	13.3%
55 - 64	11.1%	13.7%	13.8%
65 - 74	6.9%	8.8%	8.6%
75 - 84	4.1%	4.3%	4.2%
85 +	1.5%	1.7%	2.0%
18 +	78.2%	78.5%	78.0%
<b>2022 Population by Age</b>			
Total	5,998	64,793	176,553
0 - 4	6.6%	6.0%	6.0%
5 - 9	5.9%	5.8%	5.9%
10 - 14	5.6%	5.9%	6.2%
15 - 24	12.9%	11.3%	11.1%
25 - 34	17.6%	14.3%	13.8%
35 - 44	14.9%	14.3%	14.3%
45 - 54	11.4%	12.1%	12.2%
55 - 64	11.5%	13.0%	13.2%
65 - 74	7.4%	10.2%	10.1%
75 - 84	4.6%	5.3%	5.2%
85 +	1.7%	1.8%	2.0%
18 +	78.5%	78.8%	78.4%
<b>2010 Population by Sex</b>			
Males	2,625	29,547	80,621
Females	2,677	30,919	83,660
<b>2017 Population by Sex</b>			
Males	2,851	30,886	84,365
Females	2,943	32,202	87,326
<b>2022 Population by Sex</b>			
Males	2,930	31,740	86,866
Females	3,069	33,052	89,688

Source: U.S. Census Bureau, Census 2010 Summary File 1. Esri forecasts for 2017 and 2022 Esri converted Census 2000 data into 2010 geography.

August 08, 2017



## Market Profile

MN-13 N, Saint Paul, Minnesota, 55122  
Rings: 1, 3, 5 mile radii

Prepared by Esri  
Latitude: 44.81506  
Longitude: -93.22112

	1 mile	3 miles	5 miles
<b>2010 Population by Race/Ethnicity</b>			
Total	5,302	60,466	164,281
White Alone	78.0%	77.5%	77.2%
Black Alone	8.4%	8.6%	8.1%
American Indian Alone	0.3%	0.4%	0.4%
Asian Alone	7.4%	7.3%	6.5%
Pacific Islander Alone	0.2%	0.1%	0.1%
Some Other Race Alone	2.3%	2.9%	4.3%
Two or More Races	3.3%	3.3%	3.3%
Hispanic Origin	5.2%	6.2%	8.5%
Diversity Index	44.1	45.7	48.7
<b>2017 Population by Race/Ethnicity</b>			
Total	5,794	63,090	171,691
White Alone	72.7%	73.1%	73.3%
Black Alone	11.6%	11.0%	10.0%
American Indian Alone	0.4%	0.4%	0.5%
Asian Alone	8.4%	8.4%	7.6%
Pacific Islander Alone	0.2%	0.1%	0.1%
Some Other Race Alone	2.9%	3.2%	4.8%
Two or More Races	4.0%	3.8%	3.8%
Hispanic Origin	6.3%	7.0%	9.4%
Diversity Index	51.7	51.8	54.1
<b>2022 Population by Race/Ethnicity</b>			
Total	5,999	64,791	176,554
White Alone	68.2%	69.3%	69.8%
Black Alone	14.4%	13.2%	11.7%
American Indian Alone	0.4%	0.4%	0.5%
Asian Alone	9.0%	9.2%	8.5%
Pacific Islander Alone	0.2%	0.1%	0.1%
Some Other Race Alone	3.3%	3.6%	5.3%
Two or More Races	4.5%	4.3%	4.2%
Hispanic Origin	7.4%	7.9%	10.4%
Diversity Index	57.4	56.8	58.7
<b>2010 Population by Relationship and Household Type</b>			
Total	5,302	60,466	164,281
In Households	99.7%	99.4%	99.2%
In Family Households	77.3%	79.0%	80.5%
Householder	25.1%	25.6%	25.7%
Spouse	19.1%	19.6%	19.7%
Child	28.1%	28.4%	29.4%
Other relative	3.2%	3.4%	3.5%
Nonrelative	1.8%	2.0%	2.2%
In Nonfamily Households	22.5%	20.4%	18.7%
In Group Quarters	0.3%	0.6%	0.8%
Institutionalized Population	0.1%	0.3%	0.4%
Noninstitutionalized Population	0.1%	0.3%	0.4%

**Data Note:** Persons of Hispanic Origin may be of any race. The Diversity Index measures the probability that two people from the same area will be from different race/ethnic groups.

**Source:** U.S. Census Bureau, Census 2010 Summary File 1. Esri forecasts for 2017 and 2022 Esri converted Census 2000 data into 2010 geography.

August 08, 2017



## Market Profile

MN-13 N, Saint Paul, Minnesota, 55122  
Rings: 1, 3, 5 mile radii

Prepared by Esri  
Latitude: 44.81506  
Longitude: -93.22112

	1 mile	3 miles	5 miles
<b>2017 Population 25+ by Educational Attainment</b>			
Total	4,005	44,477	120,338
Less than 9th Grade	1.3%	2.1%	2.8%
9th - 12th Grade, No Diploma	1.8%	3.0%	3.5%
High School Graduate	18.6%	17.0%	17.4%
GED/Alternative Credential	3.3%	2.3%	2.3%
Some College, No Degree	21.8%	21.3%	21.0%
Associate Degree	12.6%	12.4%	11.4%
Bachelor's Degree	30.2%	29.0%	28.2%
Graduate/Professional Degree	10.4%	12.8%	13.4%
<b>2017 Population 15+ by Marital Status</b>			
Total	4,726	51,616	140,073
Never Married	35.4%	31.8%	32.0%
Married	45.8%	51.5%	51.8%
Widowed	4.7%	4.2%	5.0%
Divorced	14.1%	12.5%	11.3%
<b>2017 Civilian Population 16+ in Labor Force</b>			
Civilian Employed	96.1%	95.9%	95.6%
Civilian Unemployed (Unemployment Rate)	3.9%	4.1%	4.4%
<b>2017 Employed Population 16+ by Industry</b>			
Total	3,468	35,936	94,818
Agriculture/Mining	0.1%	0.3%	0.3%
Construction	5.9%	4.1%	4.2%
Manufacturing	9.9%	11.1%	11.3%
Wholesale Trade	2.5%	3.0%	2.9%
Retail Trade	12.1%	10.5%	10.6%
Transportation/Utilities	7.1%	6.6%	5.8%
Information	2.0%	2.4%	2.1%
Finance/Insurance/Real Estate	11.3%	10.3%	10.3%
Services	46.0%	48.8%	49.9%
Public Administration	3.1%	2.8%	2.6%
<b>2017 Employed Population 16+ by Occupation</b>			
Total	3,468	35,935	94,817
White Collar	65.9%	67.7%	67.1%
Management/Business/Financial	16.8%	17.3%	18.0%
Professional	20.0%	24.1%	23.9%
Sales	10.4%	10.9%	10.6%
Administrative Support	18.7%	15.4%	14.7%
Services	15.4%	15.8%	16.4%
Blue Collar	18.7%	16.5%	16.4%
Farming/Forestry/Fishing	0.0%	0.2%	0.2%
Construction/Extraction	4.4%	2.4%	2.9%
Installation/Maintenance/Repair	2.3%	2.4%	2.3%
Production	5.9%	5.5%	5.9%
Transportation/Material Moving	6.1%	6.0%	5.2%
<b>2010 Population By Urban/ Rural Status</b>			
Total Population	5,302	60,466	164,281
Population Inside Urbanized Area	100.0%	100.0%	100.0%
Population Inside Urbanized Cluster	0.0%	0.0%	0.0%
Rural Population	0.0%	0.0%	0.0%

Source: U.S. Census Bureau, Census 2010 Summary File 1. Esri forecasts for 2017 and 2022 Esri converted Census 2000 data into 2010 geography.

August 08, 2017



## Market Profile

MN-13 N, Saint Paul, Minnesota, 55122  
Rings: 1, 3, 5 mile radii

Prepared by Esri  
Latitude: 44.81506  
Longitude: -93.22112

	1 mile	3 miles	5 miles
<b>2010 Households by Type</b>			
Total	2,447	25,299	66,504
Households with 1 Person	33.3%	30.6%	29.0%
Households with 2+ People	66.7%	69.4%	71.0%
Family Households	57.9%	61.3%	63.4%
Husband-wife Families	44.0%	46.9%	48.5%
With Related Children	18.8%	20.0%	21.2%
Other Family (No Spouse Present)	13.9%	14.4%	14.9%
Other Family with Male Householder	4.3%	4.0%	4.3%
With Related Children	2.2%	2.2%	2.4%
Other Family with Female Householder	9.6%	10.3%	10.6%
With Related Children	6.7%	6.7%	6.9%
Nonfamily Households	8.8%	8.1%	7.6%
All Households with Children	27.9%	29.2%	30.8%
Multigenerational Households	2.2%	2.4%	2.5%
Unmarried Partner Households	7.2%	6.7%	6.5%
Male-female	6.7%	6.1%	5.9%
Same-sex	0.4%	0.6%	0.6%
<b>2010 Households by Size</b>			
Total	2,448	25,297	66,504
1 Person Household	33.3%	30.6%	29.0%
2 Person Household	33.3%	34.2%	33.9%
3 Person Household	15.0%	15.3%	15.6%
4 Person Household	11.1%	12.0%	12.8%
5 Person Household	4.8%	5.0%	5.3%
6 Person Household	1.5%	1.8%	2.0%
7 + Person Household	1.1%	1.2%	1.4%
<b>2010 Households by Tenure and Mortgage Status</b>			
Total	2,447	25,299	66,504
Owner Occupied	62.4%	70.1%	68.7%
Owned with a Mortgage/Loan	49.2%	55.7%	54.0%
Owned Free and Clear	13.3%	14.4%	14.7%
Renter Occupied	37.6%	29.9%	31.3%
<b>2010 Housing Units By Urban/ Rural Status</b>			
Total Housing Units	2,623	26,720	70,029
Housing Units Inside Urbanized Area	100.0%	100.0%	100.0%
Housing Units Inside Urbanized Cluster	0.0%	0.0%	0.0%
Rural Housing Units	0.0%	0.0%	0.0%

**Data Note:** Households with children include any households with people under age 18, related or not. Multigenerational households are families with 3 or more parent-child relationships. Unmarried partner households are usually classified as nonfamily households unless there is another member of the household related to the householder. Multigenerational and unmarried partner households are reported only to the tract level. Esri estimated block group data, which is used to estimate polygons or non-standard geography.

**Source:** U.S. Census Bureau, Census 2010 Summary File 1. Esri forecasts for 2017 and 2022 Esri converted Census 2000 data into 2010 geography.

August 08, 2017



## Market Profile

MN-13 N, Saint Paul, Minnesota, 55122  
Rings: 1, 3, 5 mile radii

Prepared by Esri  
Latitude: 44.81506  
Longitude: -93.22112

	1 mile	3 miles	5 miles
<b>Top 3 Tapestry Segments</b>			
	1. Young and Restless (11B)	Bright Young Professionals	Bright Young Professionals
	2. Old and Newcomers (8F)	Home Improvement (4B)	Parks and Rec (5C)
	3. Enterprising Professionals	Parks and Rec (5C)	Savvy Suburbanites (1D)
<b>2017 Consumer Spending</b>			
Apparel & Services: Total \$	\$6,169,226	\$67,116,097	\$175,011,307
Average Spent	\$2,296.81	\$2,538.33	\$2,521.52
Spending Potential Index	106	118	117
Education: Total \$	\$4,148,895	\$46,585,539	\$123,818,200
Average Spent	\$1,544.64	\$1,761.87	\$1,783.94
Spending Potential Index	106	121	123
Entertainment/Recreation: Total \$	\$8,481,051	\$94,835,840	\$248,294,330
Average Spent	\$3,157.50	\$3,586.70	\$3,577.37
Spending Potential Index	101	115	115
Food at Home: Total \$	\$14,188,999	\$152,793,499	\$397,765,216
Average Spent	\$5,282.58	\$5,778.66	\$5,730.91
Spending Potential Index	105	115	114
Food Away from Home: Total \$	\$9,694,249	\$103,977,492	\$269,584,682
Average Spent	\$3,609.18	\$3,932.43	\$3,884.11
Spending Potential Index	108	118	117
Health Care: Total \$	\$14,362,770	\$165,528,867	\$435,464,003
Average Spent	\$5,347.27	\$6,260.31	\$6,274.06
Spending Potential Index	96	112	112
HH Furnishings & Equipment: Total \$	\$5,374,565	\$59,710,687	\$155,684,116
Average Spent	\$2,000.95	\$2,258.26	\$2,243.06
Spending Potential Index	103	116	115
Personal Care Products & Services: Total \$	\$2,231,277	\$24,608,281	\$64,252,568
Average Spent	\$830.71	\$930.69	\$925.74
Spending Potential Index	104	117	116
Shelter: Total \$	\$46,471,554	\$506,651,420	\$1,324,813,356
Average Spent	\$17,301.40	\$19,161.58	\$19,087.60
Spending Potential Index	107	118	118
Support Payments/Cash Contributions/Gifts in Kind: Total \$	\$6,150,636	\$70,836,654	\$185,940,535
Average Spent	\$2,289.89	\$2,679.05	\$2,678.99
Spending Potential Index	98	114	114
Travel: Total \$	\$5,486,826	\$63,758,245	\$168,438,450
Average Spent	\$2,042.75	\$2,411.34	\$2,426.82
Spending Potential Index	99	116	117
Vehicle Maintenance & Repairs: Total \$	\$2,937,513	\$32,525,443	\$84,931,977
Average Spent	\$1,093.64	\$1,230.11	\$1,223.68
Spending Potential Index	102	115	114

**Data Note:** Consumer spending shows the amount spent on a variety of goods and services by households that reside in the area. Expenditures are shown by broad budget categories that are not mutually exclusive. Consumer spending does not equal business revenue. Total and Average Amount Spent Per Household represent annual figures. The Spending Potential Index represents the amount spent in the area relative to a national average of 100.

**Source:** Consumer Spending data are derived from the 2013 and 2014 Consumer Expenditure Surveys, Bureau of Labor Statistics. Esri.

**Source:** U.S. Census Bureau, Census 2010 Summary File 1. Esri forecasts for 2017 and 2022 Esri converted Census 2000 data into 2010 geography.

August 08, 2017