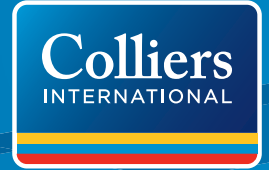


FOR SALE > LAND

3.3± Acres Available on Soutel Drive

SOUTEL DRIVE & OLD KINGS RD | JACKSONVILLE, FL 32202



Description

- > Lot Size: 3.3± Acres
- > Zoning: Residential Rural- Acre (RR-ACRE)
- > Parcel ID: #003459 - 0102
- > Emerging Industrial corridor
- > Easy Access to I-295
- > Minutes from Downtown Jacksonville
- > Please call for pricing

Contact

W. WADE POWERS
Corporate Solutions Associate
+1 904 861 1155
wade.powers@colliers.com

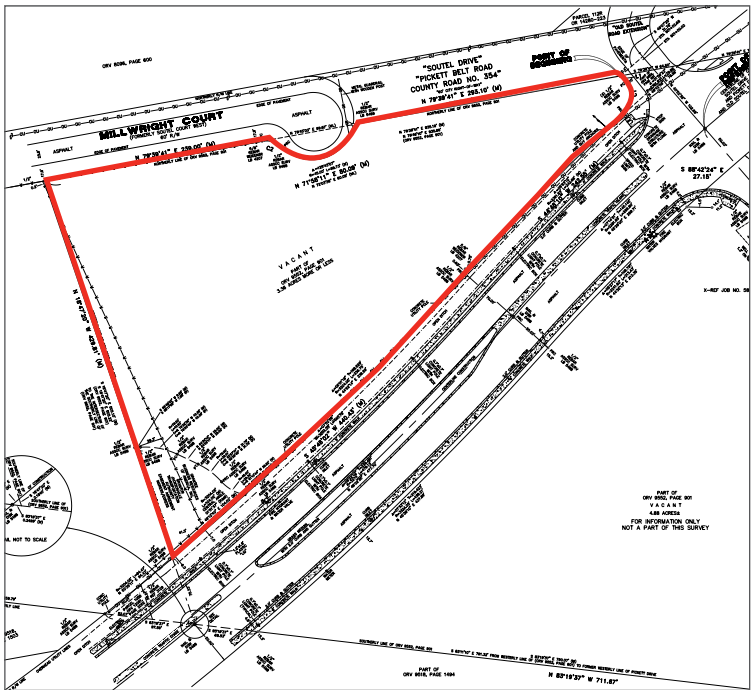
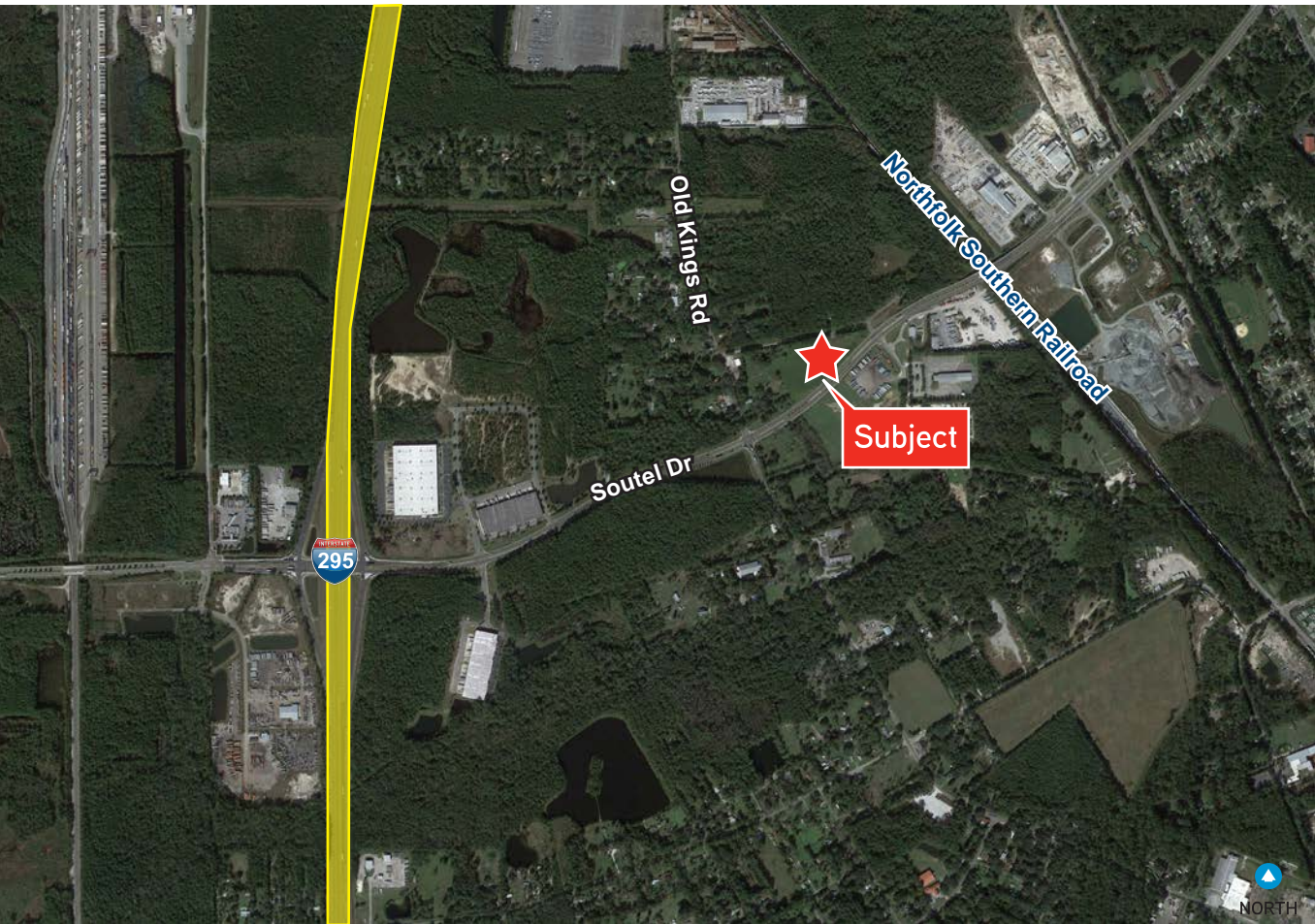


NORTH

FOR SALE > LAND

3.3± Acres Available on Soutel Drive

SOUTEL DRIVE & OLD KINGS RD | JACKSONVILLE, FL 32202



Contact

W. WADE POWERS
Corporate Solutions Associate
+1 904 861 1155
wade.powers@colliers.com

**COLLIERS INTERNATIONAL
NORTHEAST FLORIDA**
50 N. Laura Street, Suite 1725
Jacksonville, FL 32202
MAIN: +1 904 358 1206
FAX: +1 904 353 4949
www.colliers.com/jacksonville

Demographics	1 Mile	3 Mile	5 Mile
Pop. Est. 2016	2,143	31,054	104,277
2016 Est. Households	847	11,786	39,777
2016 Est. Avg. HH Income	\$46,524	\$41,626	\$42,166

Source: Esri Business Analyst Online

This document has been prepared by Colliers International for advertising and general information only. Colliers International makes no guarantees, representations or warranties of any kind, expressed or implied, regarding the information including, but not limited to, warranties of content, accuracy and reliability. Any interested party should undertake their own inquiries as to the accuracy of the information. Colliers International excludes unequivocally all inferred or implied terms, conditions and warranties arising out of this document and excludes all liability for loss and damages arising there from. This publication is the copyrighted property of Colliers International and/or its licensor(s). ©2017. All rights reserved.