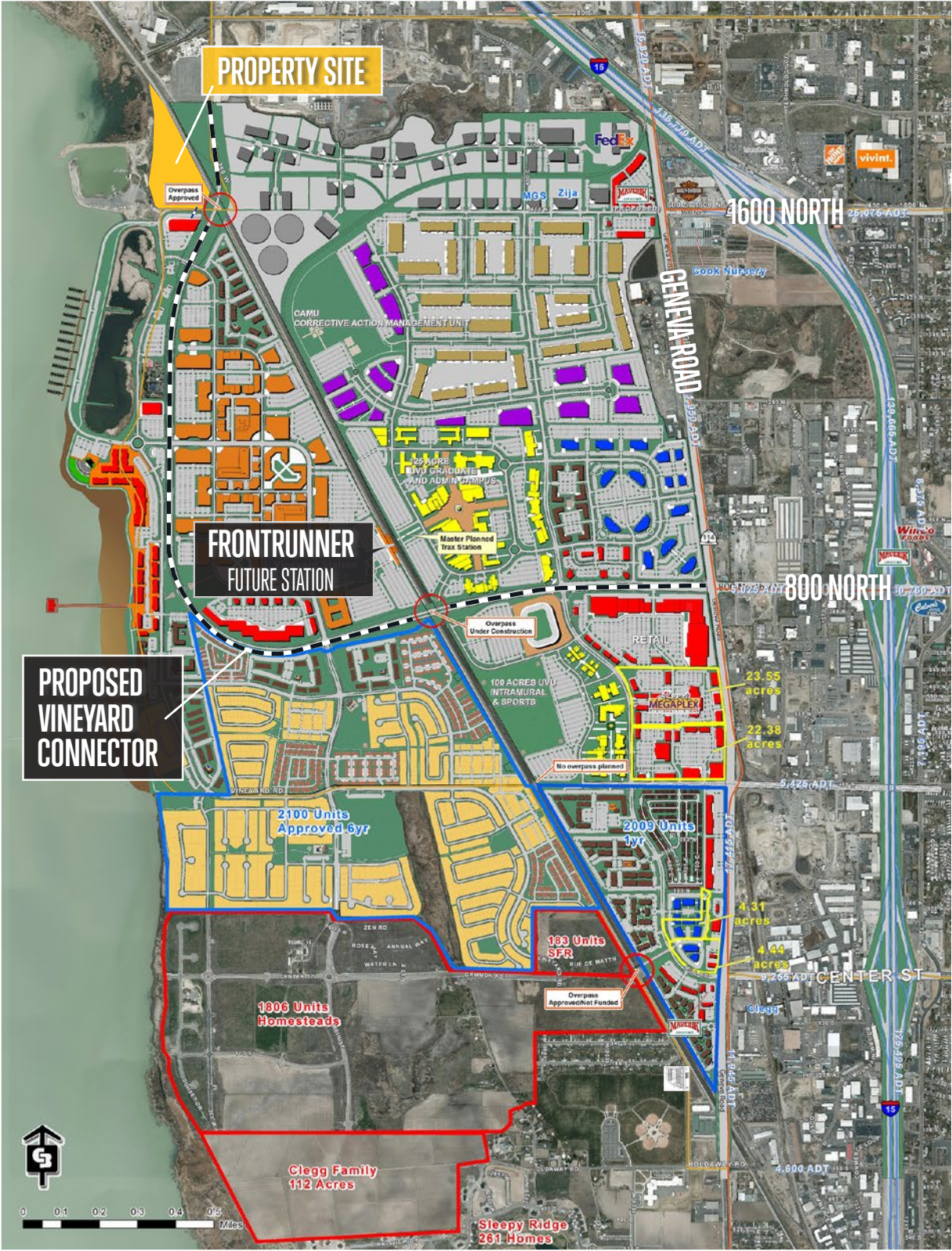


Lindon City Excess Land

2100 WEST 600 SOUTH LINDON - UTAH



Lindon City Excess Land

2100 WEST 600 SOUTH LINDON - UTAH



Property Information

- > 9 Acres +/-
- > \$4.75 per Square Foot
- > Zoning: Recreational Mixed Use or Light Industrial
- > Water, Sewer, Electrical to Site
Natural Gas Not Stubbed
- > Flexible Lot Configuration
- > Ready to Develop - Level Site
- > Adjacent to Lindon Boat Harbor

This document has been prepared by Colliers International for advertising and general information only. Colliers International makes no guarantees, representations or warranties of any kind, expressed or implied, regarding the information including, but not limited to, warranties of content, accuracy and reliability. Any interested party should undertake their own inquiries as to the accuracy of the information. Colliers International excludes unequivocally all inferred or implied terms, conditions and warranties arising out of this document and excludes all liability for loss and damages arising there from. This publication is the copyrighted property of Colliers International and/or its licensor(s). ©2017. All rights reserved.



Jarrod Hunt
+1 801 787 8940
jarrod.hunt@colliers.com

Gordon Jacobson
+1 801 597 5500
jarrod.hunt@colliers.com

Colliers International
2100 Pleasant Grove Blvd. | Suite 200
Pleasant Grove, UT 84062
P: +1 801 610 1300

Lindon City Excess Land

2100 WEST 600 SOUTH LINDON - UTAH

