

FOR SALE > 7,000+/- SF



1550 Bonnie Lane

NATIONWIDE PLAZA, CORDOVA, TENNESSEE 38018



Nationwide Plaza is located on Bonnie Lane just off Germantown Pkwy in Cordova, Tennessee with convenient access to I-40. Germantown Parkway is the major north/south thoroughfare in east Shelby County with over 45,000 vehicles per day. Surrounded by Class A retailers, which includes Kroger, Stein Mart, Kohl's, Costco, and more.

Property Features

- > 100 % occupied
- > 7,000+/- square foot office/retail space
- > Space is divisible at 3,500 square feet
- > Single story brick building constructed in 2005
- > Formerly occupied by Nationwide Insurance
- > 46,407 VPD at Dexter Road and N. Germantown Pkwy
- > Tenants : TNS Salon and Massage Envy
- > Highly visible location with easy access
- > Ample parking
- > Income producing



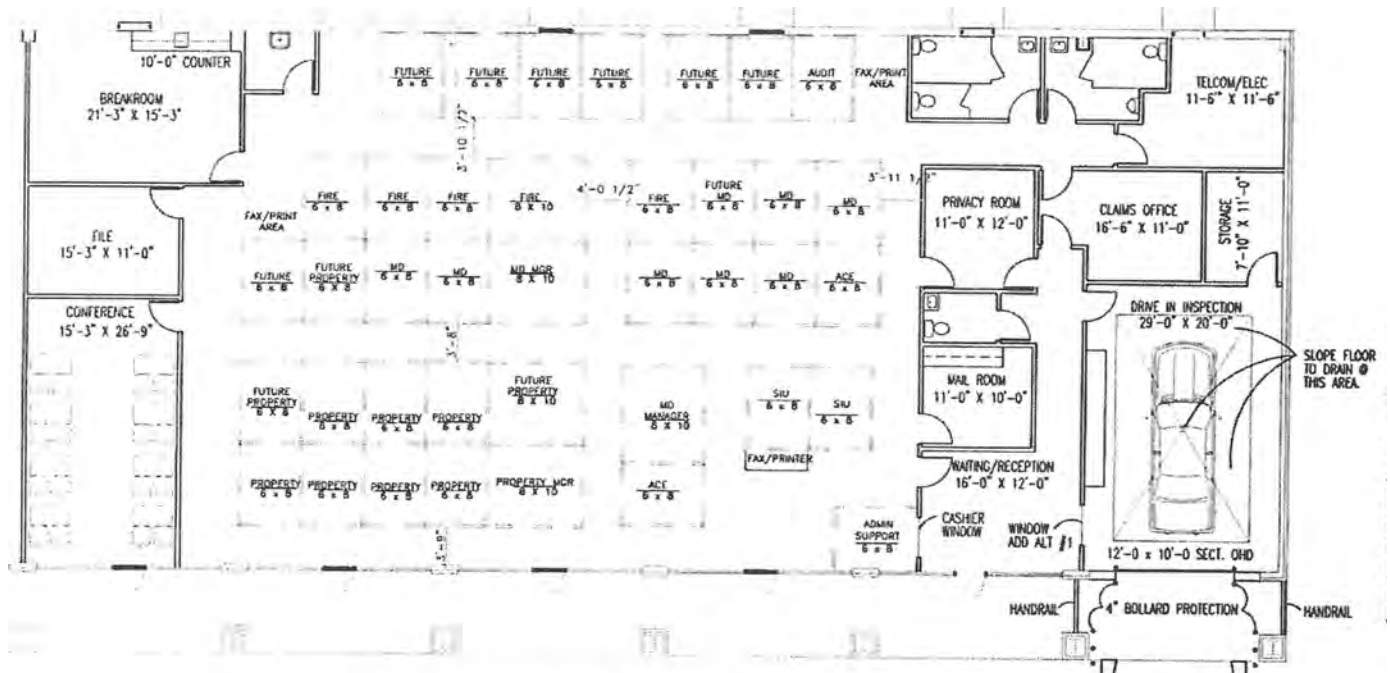
AGENT: ED THOMAS, CCIM
901 375 4800 | EXT 4912
MEMPHIS, TN
ed.thomas@colliers.com

AGENT: HUNTER ADAMS
901 375 4800 | EXT 4915
MEMPHIS, TN
hunter.adams@colliers.com

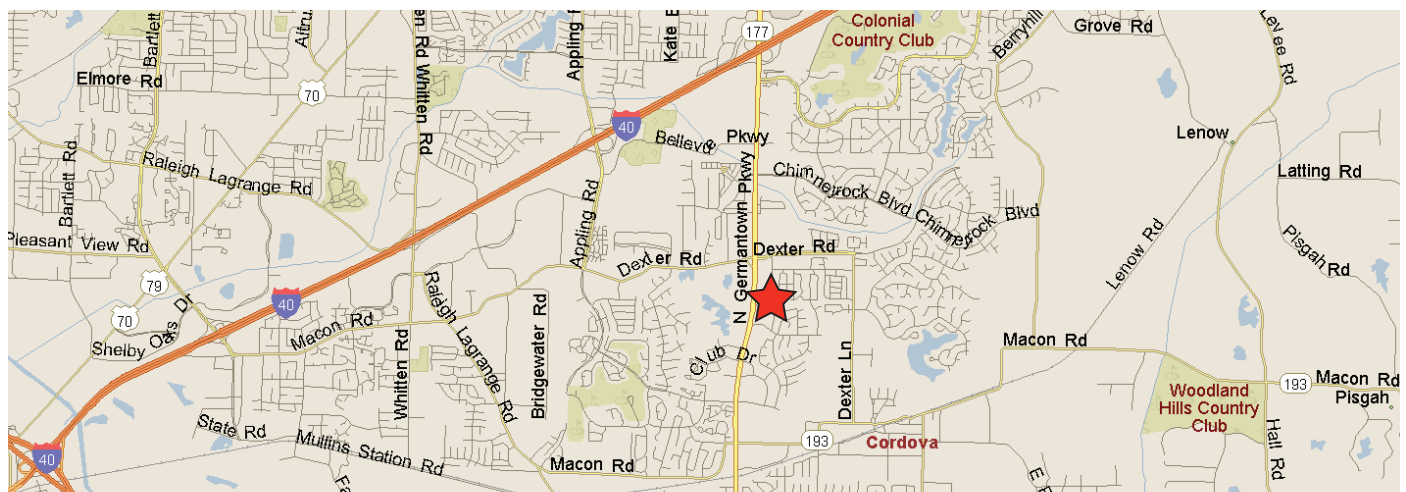
COLLIERS INTERNATIONAL
6363 Poplar Avenue, Suite 220
Memphis, TN 38119

www.Colliers.com/memphis

1550 Bonnie Lane > Site Plan



1550 Bonnie Lane › Location Map



2015 Demographic and Income Profile

	1.0 Mile	3.0 Miles	5.0 Miles
Population	12,884	69,201	156,790
Households	5,881	28,134	60,658
Average Household Income	\$70,980	\$78,737	\$87,479

Copyright © 2018 Colliers International.
Information herein has been obtained from sources deemed reliable, however its accuracy cannot be guaranteed. The user is required to conduct their own due diligence and verification.

