

FOR LEASE > OFFICE BUILDING

680 Century Point

Lake Mary, FL 32746



The 680 Century Point building is a single story class A office building located in Lake Mary, Florida. Access to Lake Mary will be enhanced with the connection of the 429 Western Beltway to SR 417. Plans are to be completed by 2019. This extension will expand Lake Mary's access to the western boundaries of Windermere and Horizons West.

Richard Solik
407 362 6179
Orlando, Florida
richard.solik@colliers.com

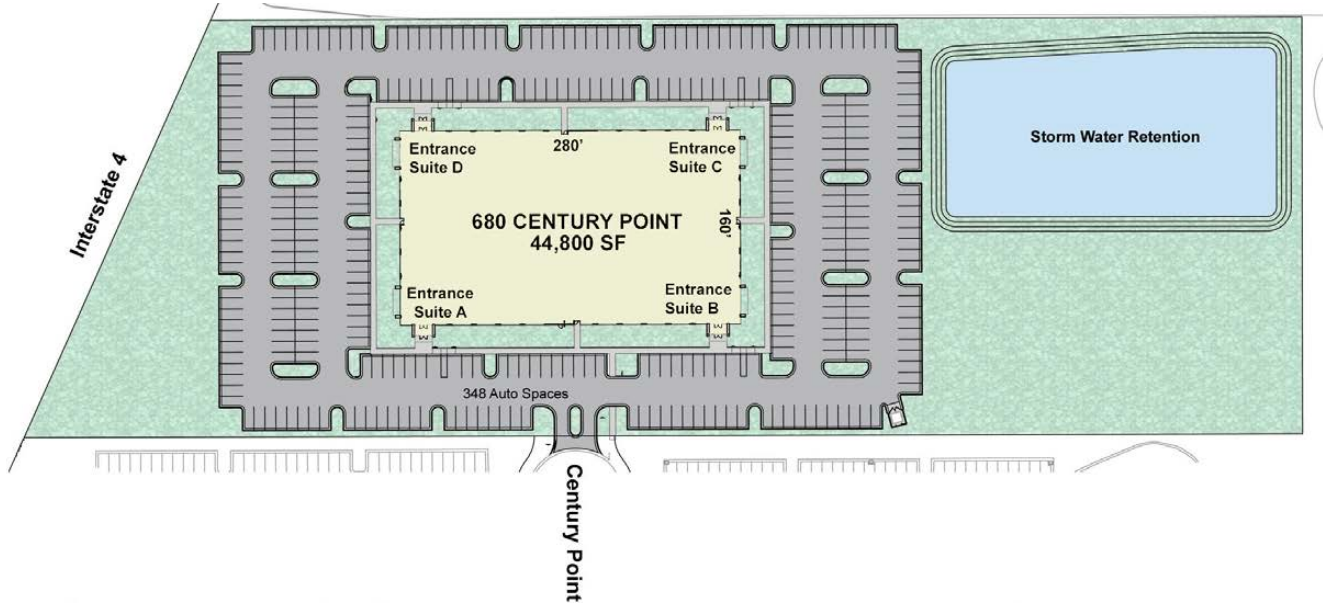
Matthew McKeever
407 362 6137
Orlando, Florida
matthew.mckeever@colliers.com

COLLIERS INTERNATIONAL
255 South Orange Avenue,
Suite 1300
Orlando, FL 32801
www.colliers.com

FOR LEASE > OFFICE SPACE

680 Century Point

Lake Mary, Florida 32746



Single Story > Office Space

The building has I-4 visibility and excellent access from Rinehart Road. The property is well landscaped and has an above market parking ratio of 7.8/1000. The building is designed for both single and multi-tenant occupancy.

Property Description

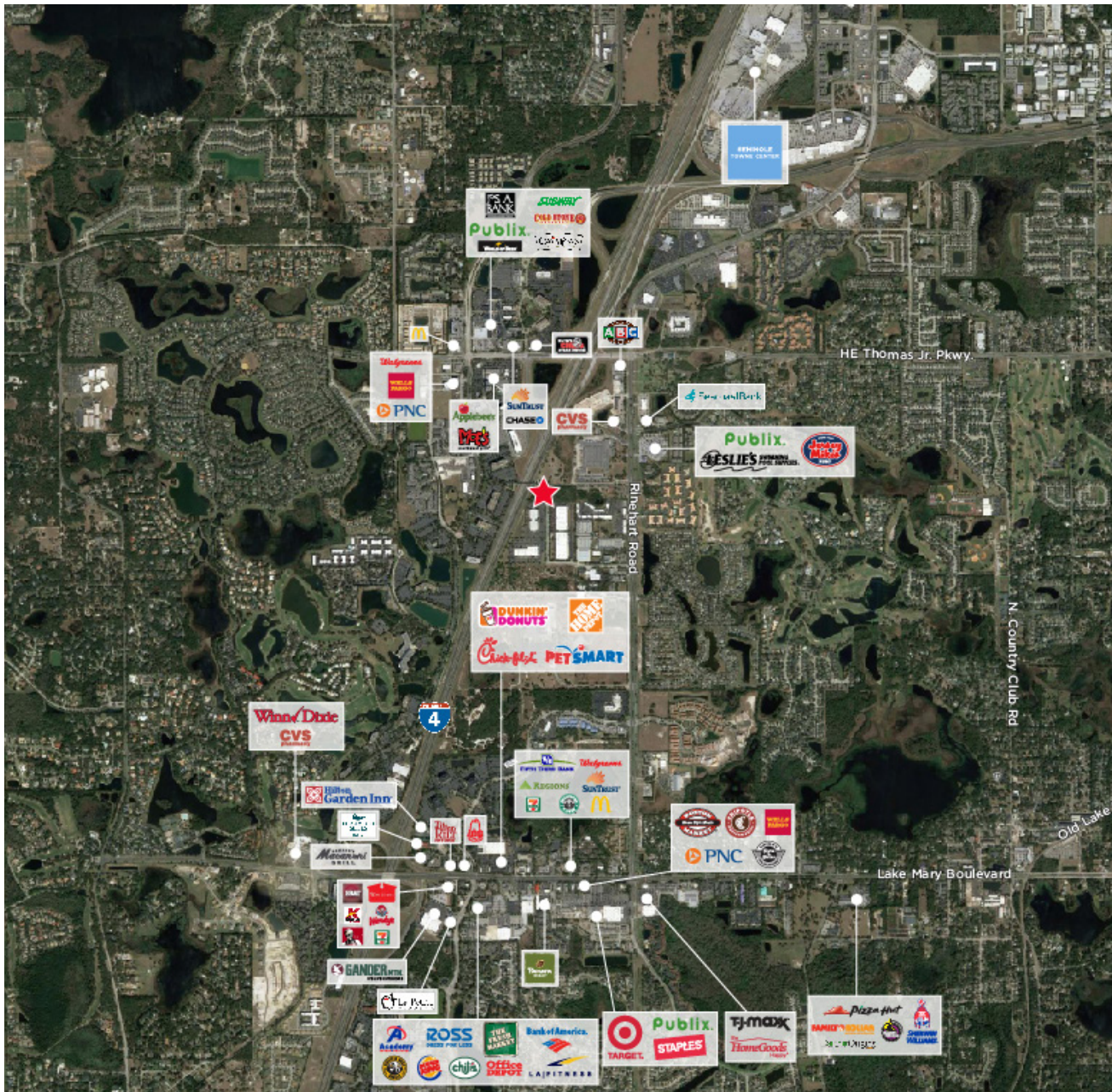
- > Building Class A
- > Single Story Office Space
- > 44,800 SF
- > Single Story
- > Parking 7.8/1000 SF (348 spaces)
- > Year Built 2017

FOR LEASE > OFFICE SPACE

680 Century Point

Lake Mary, FL 32746

The property is surrounded with high quality retail, including multiple restaurants, banks, hotels and shopping. Residential housing availability ranges from exclusive golf course community to middle management neighborhoods to area apartments.

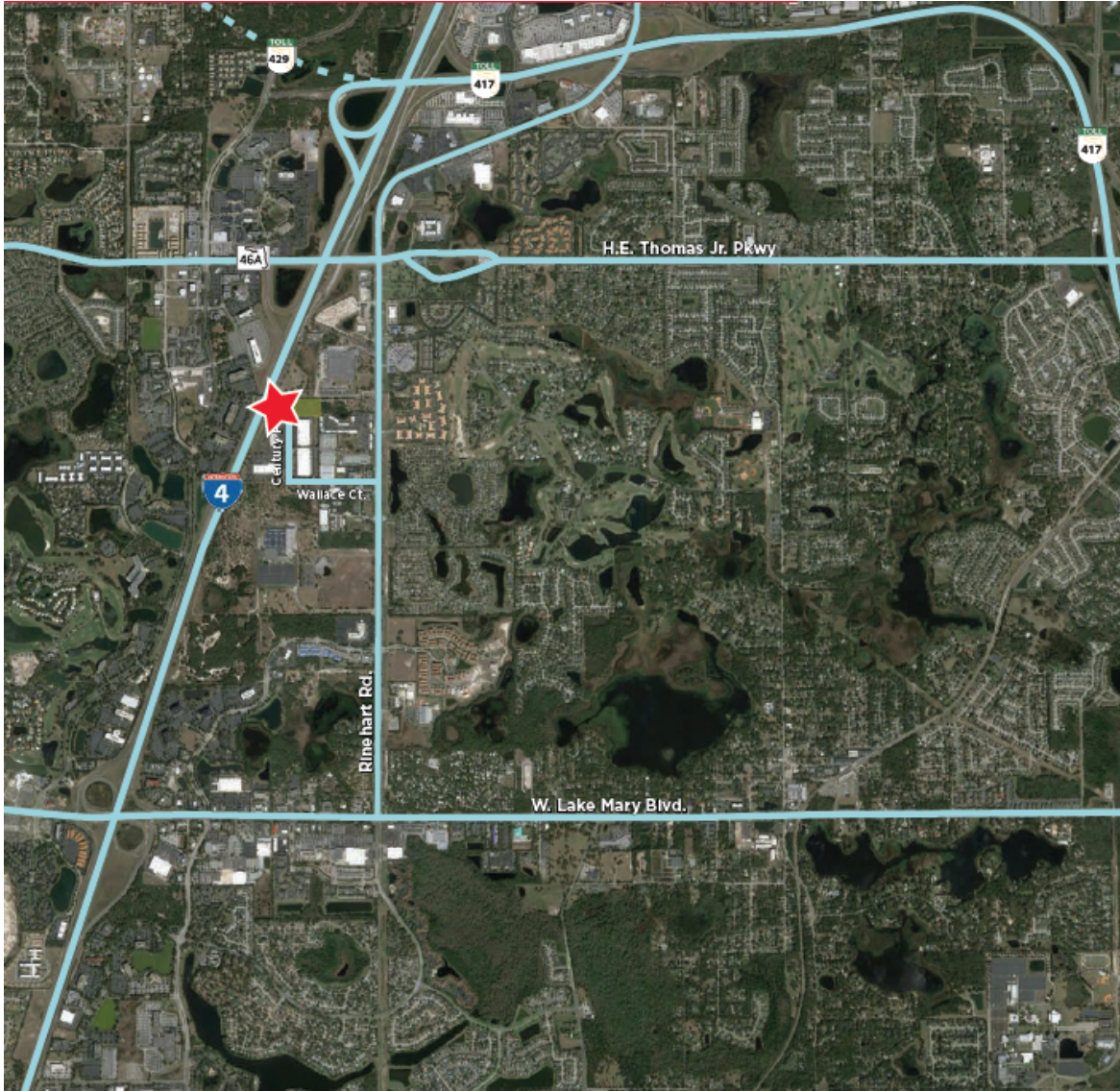


COLLIERS INTERNATIONAL
255 South Orange Avenue,
Suite 1300
Orlando, FL 32801
www.colliers.com

FOR LEASE > OFFICE SPACE

680 Century Point

Lake Mary, FL 32746



Contact Us

Richard Solik

Executive Managing Director

407 362 6179

Orlando, Florida

richard.solik@colliers.com

Matthew McKeever

Executive Managing Director

407 362 6137

Orlando, Florida

matthew.mckeever@colliers.com

COLLIERS INTERNATIONAL

255 South Orange Avenue,

Suite 1300

Orlando, FL 32801

www.colliers.com

The information contained herein has either been given to us by the owner of the property or has been obtained from sources that we deem reliable. We have no reason to doubt its accuracy, but we do not guarantee it. This property is subject to prior sale, lease, price change or withdrawal without notice. Note: Broker participation is welcomed. Compensation is offered to buyer/tenant's agent.

