

FOR LEASE > RETAIL / OFFICE

BERKLEY SQUARE

28913 - 28997 WOODWARD AVENUE | BERKLEY, MICHIGAN



GREAT VISIBILITY & ACCESSIBILITY

> PROPERTY HIGHLIGHTS

- 1,065 & 1,120 SF Spaces Available, Can Combine for 2,185 SF
- 650' of Frontage on Woodward Avenue
- Located at the Corner of Woodward Avenue & 12 Mile Road
- Traffic Counts: 76,000 on Woodward
18,000 on 12 Mile Road
- Three Building Center Occupied by Retail & Office Tenants

DEMOGRAPHICS	Category	1 Mile	3 Mile	5 Mile
	Population	15,987	139,522	325,600
	Average Income	\$89,150	\$79,946	\$77,850
	Households	7,429	64,133	146,012

COLLIERS INTERNATIONAL
2 Corporate Drive | Suite 300
Southfield, Michigan 48076

For More Information Call:

BRIAN WHITFIELD
PHONE 248 540 1000 EXT 1646
EMAIL brian.whitfield@colliers.com



colliers.com/detroit



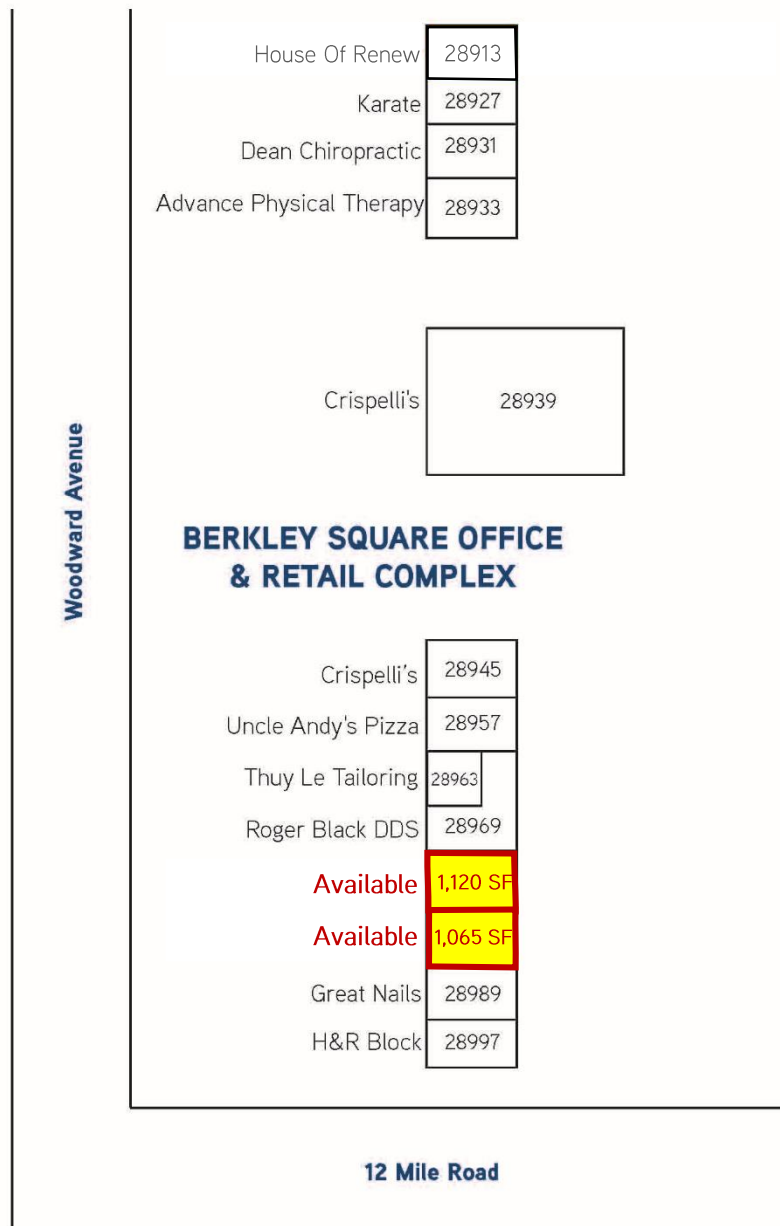
FULLY LEASED > RETAIL / OFFICE

BERKLEY SQUARE

28913 - 28997 WOODWARD AVENUE | BERKLEY, MICHIGAN



> SITE PLAN



BRIAN WHITFIELD
PHONE 248 540 1000 EXT 1646
EMAIL brian.whitfield@colliers.com



COLLIERS INTERNATIONAL
2 Corporate Dr. | Suite 300
Southfield, Michigan 48076

FULLY LEASED > RETAIL / OFFICE

BERKLEY SQUARE

28913 - 28997 WOODWARD AVENUE | BERKLEY, MICHIGAN



> PROPERTY PHOTOS



BRIAN WHITFIELD
PHONE 248 540 1000 EXT 1646
EMAIL brian.whitfield@colliers.com



COLLIERS INTERNATIONAL
2 Corporate Dr. | Suite 300
Southfield, Michigan 48076

FULLY LEASED > RETAIL / OFFICE

BERKLEY SQUARE

28913 - 28997 WOODWARD AVENUE | BERKLEY, MICHIGAN



> PROPERTY PHOTOS



BRIAN WHITFIELD
PHONE 248 540 1000 EXT 1646
EMAIL brian.whitfield@colliers.com



COLLIERS INTERNATIONAL
2 Corporate Dr. | Suite 300
Southfield, Michigan 48076

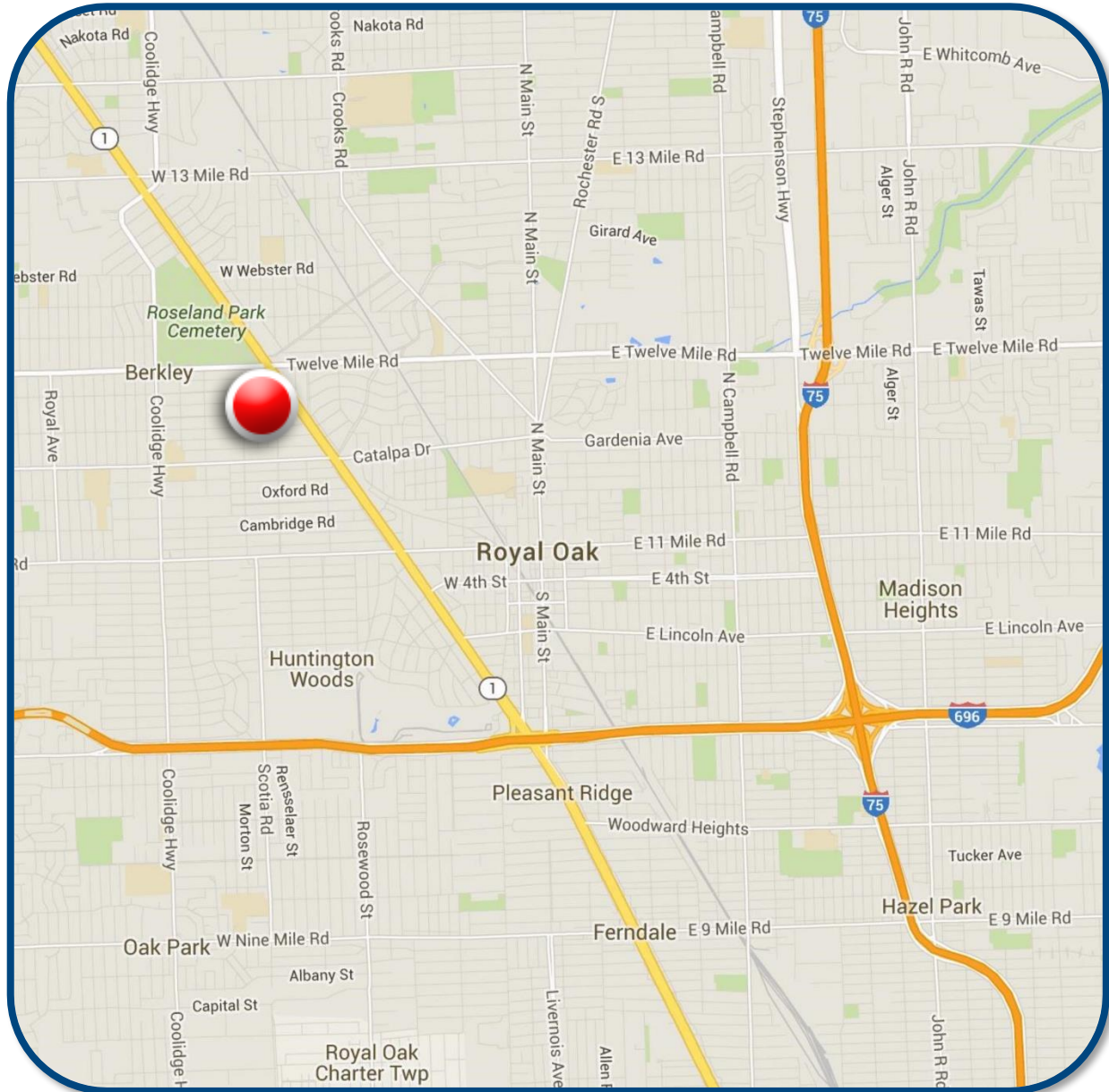
FULLY LEASED > RETAIL / OFFICE

BERKLEY SQUARE

28913 - 28997 WOODWARD AVENUE | BERKLEY, MICHIGAN



> LOCATION MAP



BRIAN WHITFIELD
PHONE 248 540 1000 EXT 1646
EMAIL brian.whitfield@colliers.com



COLLIERS INTERNATIONAL
2 Corporate Dr. | Suite 300
Southfield, Michigan 48076

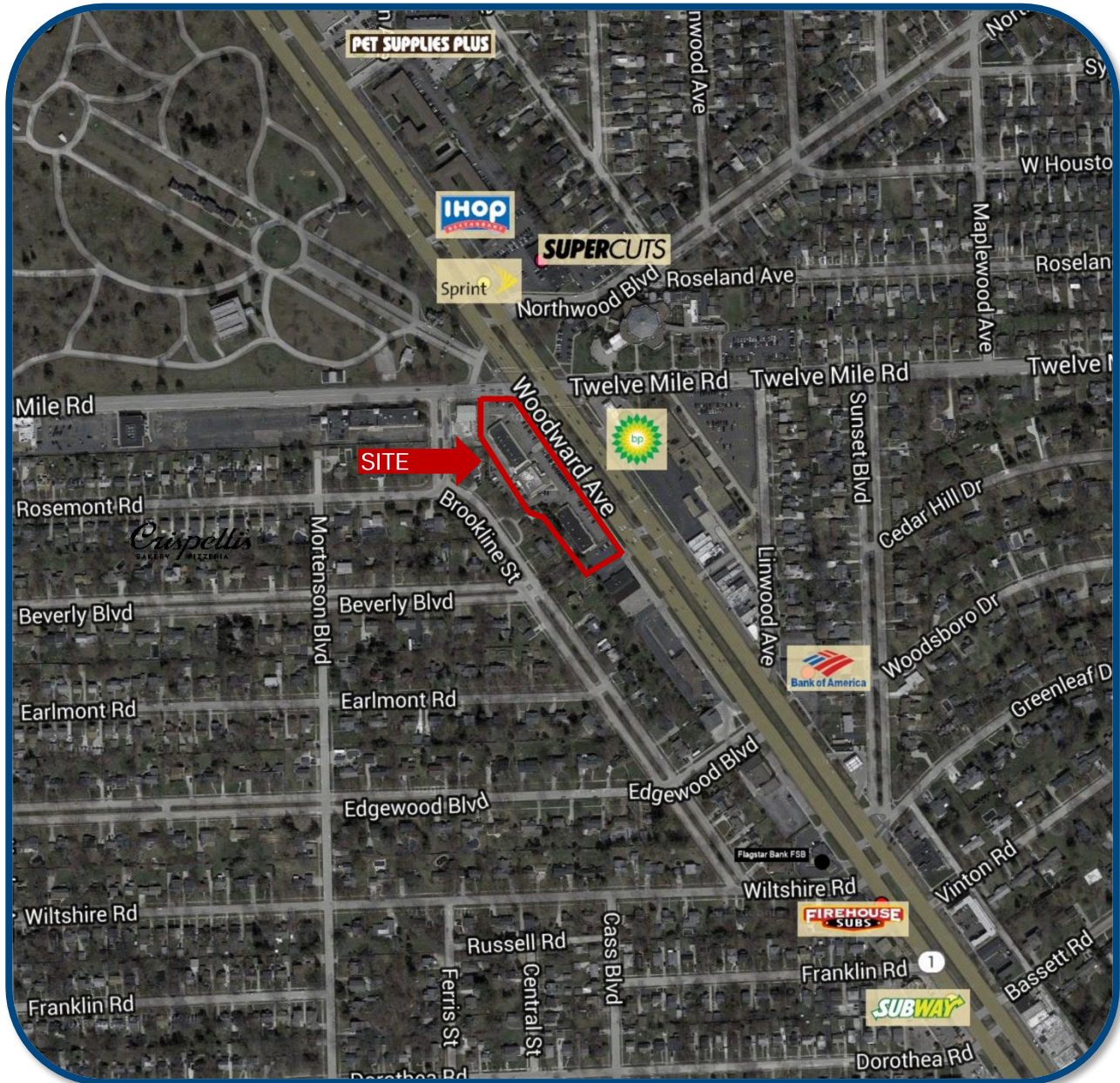
FULLY LEASED > RETAIL / OFFICE

BERKLEY SQUARE

28913 - 28997 WOODWARD AVENUE | BERKLEY, MICHIGAN



> AREA MERCHANT MAP



BRIAN WHITFIELD
PHONE 248 540 1000 EXT 1646
EMAIL brian.whitfield@colliers.com



COLLIERS INTERNATIONAL
2 Corporate Dr. | Suite 300
Southfield, Michigan 48076

SUMMARY PROFILE

2000-2010 Census, 2015 Estimates with 2020 Projections

Calculated using Weighted Block Centroid from Block Groups



Lat/Lon: 42.5027/-83.1724

RS1

28913-28997 Woodward Ave

Berkley, MI 48072

1 mi radius

3 mi radius

5 mi radius

POPULATION	2015 Estimated Population	15,987	139,522	325,600
	2020 Projected Population	16,328	142,984	333,019
	2010 Census Population	16,000	137,747	320,231
	2000 Census Population	16,630	145,251	340,386
	Projected Annual Growth 2015 to 2020	0.4%	0.5%	0.5%
	Historical Annual Growth 2000 to 2015	-0.3%	-0.3%	-0.3%
	2015 Median Age	40.5	39.1	40.1
HOUSEHOLDS	2015 Estimated Households	7,429	64,133	146,012
	2020 Projected Households	7,753	67,186	152,685
	2010 Census Households	7,253	61,792	139,873
	2000 Census Households	7,427	64,113	145,655
	Projected Annual Growth 2015 to 2020	0.9%	1.0%	0.9%
	Historical Annual Growth 2000 to 2015	-	-	-
RACE AND ETHNICITY	2015 Estimated White	91.5%	76.5%	65.1%
	2015 Estimated Black or African American	4.0%	18.0%	27.1%
	2015 Estimated Asian or Pacific Islander	2.1%	2.7%	4.7%
	2015 Estimated American Indian or Native Alaskan	0.3%	0.2%	0.2%
	2015 Estimated Other Races	2.0%	2.6%	2.9%
	2015 Estimated Hispanic	2.3%	2.2%	2.2%
INCOME	2015 Estimated Average Household Income	\$89,150	\$79,946	\$77,850
	2015 Estimated Median Household Income	\$74,158	\$67,516	\$63,522
	2015 Estimated Per Capita Income	\$41,439	\$36,791	\$34,963
EDUCATION (AGE 25+)	2015 Estimated Elementary (Grade Level 0 to 8)	1.1%	1.2%	2.3%
	2015 Estimated Some High School (Grade Level 9 to 11)	3.5%	3.6%	4.8%
	2015 Estimated High School Graduate	14.6%	17.7%	20.1%
	2015 Estimated Some College	20.1%	20.8%	21.5%
	2015 Estimated Associates Degree Only	8.6%	8.7%	8.1%
	2015 Estimated Bachelors Degree Only	29.4%	27.5%	24.3%
	2015 Estimated Graduate Degree	22.6%	20.4%	18.8%
BUSINESS	2015 Estimated Total Businesses	712	7,013	21,511
	2015 Estimated Total Employees	8,373	71,553	243,208
	2015 Estimated Employee Population per Business	11.8	10.2	11.3
	2015 Estimated Residential Population per Business	22.5	19.9	15.1

This report was produced using data from private and government sources deemed to be reliable. The information herein is provided without representation or warranty.