



Lease Rates:

\$15.50 - \$17.50
PSF NET

Contact us:

Michael Falk SIOR CCIM

Managing Director

+1 561 662 2624

michael.falk@colliers.com

Scott Weprin SIOR CCIM

Senior Director

+1 561 239 9386

scott.weprin@colliers.com

FOR LEASE | 1555 Palm Beach Lakes Blvd, West Palm Beach, FL

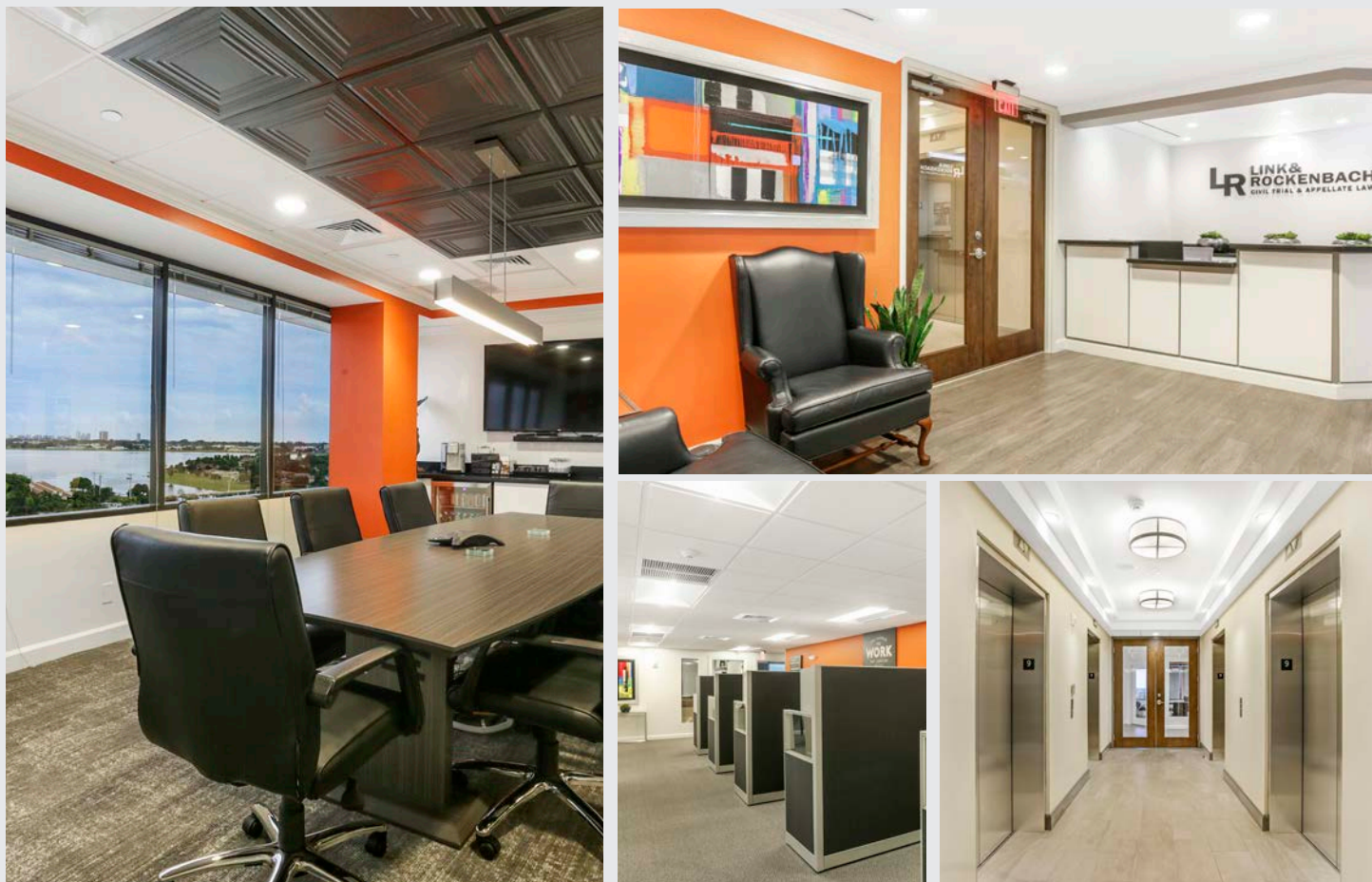
Newly Renovated Class A Office Tower

Tower 1555 is conveniently located on Palm Beach Lakes Boulevard, minutes from the Palm Beach Outlets Mall, with direct access to I-95 and Downtown West Palm Beach. This striking, 16-story Class A building offers covered parking, panoramic views of West Palm Beach, an on-site café and newly renovated common areas.

Colliers International
South Florida, LLC
901 Northpoint Parkway
Suite 109
West Palm Beach, FL 33407
Tel +1 561 478 6400



FOR LEASE | 1555 Palm Beach Lakes Blvd, West Palm Beach, FL



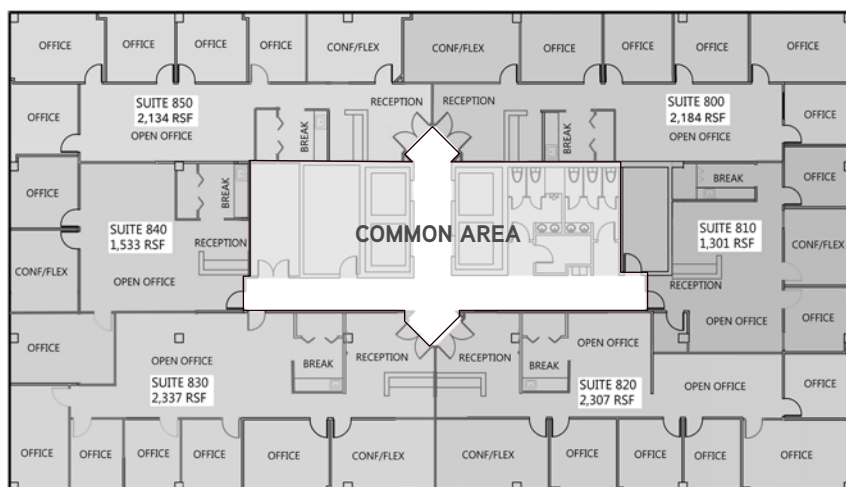
CLOCKWISE FROM TOP LEFT: New Tenant Conference Room | New Tenant Reception Area | Lobby Area | Newly Built-out Open Workspace

Available Space & Costs

300	2,712 SF	\$15.50 PSF
320	3,439 SF	\$15.50 PSF
410	1,258 SF	\$16.00 PSF
500	11,801 F	\$15.50 PSF
800 ¹	2,124SF	\$16.50 PSF
810	1,301 SF	\$17.00 PSF
820	2,307 SF	\$16.50 PSF
830 ²	2,337 SF	\$16.50 PSF
840	1,533 SF	\$17.00 PSF
850	2,134 SF	\$16.50 PSF
1400	11,801 SF	\$17.50 PSF

¹ May be combined with Suite 810

² May be combined with Suite 840



FEATURED FLOOR PLAN: 8th Floor - Contiguous space

FOR LEASE | 1555 Palm Beach Lakes Blvd, West Palm Beach, FL

Tower 1555 offers easy access to premium amenities, Downtown West Palm Beach and more.



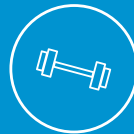
16
Stories



11,801 SF
Max. Contiguous



1,258 SF
Min. Divisible



Concierge
Fitness On-Site*



24/7
Secured Access



Covered
Parking Garage



Class A
Office Building



Brightline
2.4 Miles Away



I-95
2 Min. Drive

**Requires membership with Fitness Instructor*

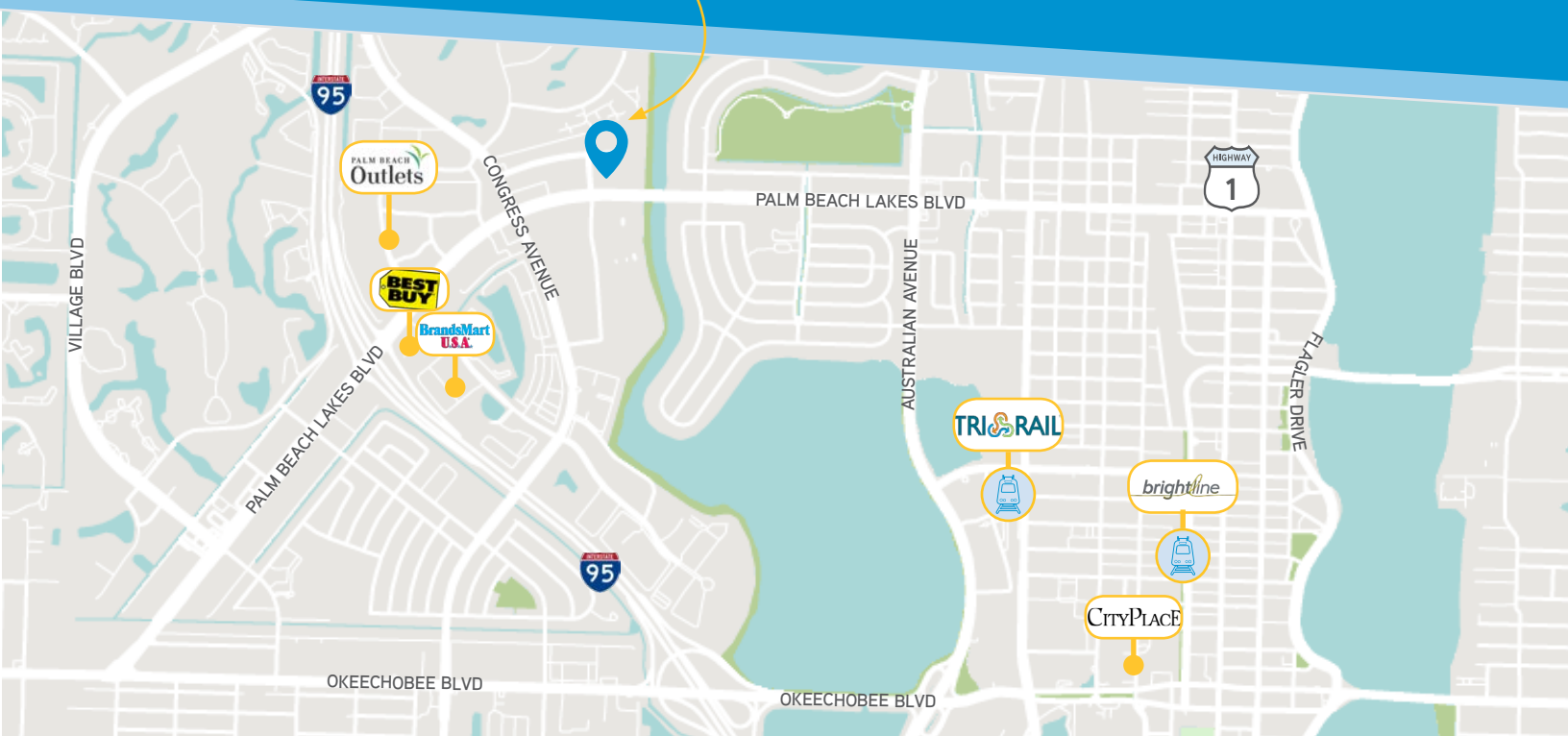
THE BUILDING

Tower 1555 features recently updated common areas and premium finished spaces with panoramic views of West Palm Beach. The building also offers a tremendous branding opportunity with featured signage facing Palm Beach Lakes Boulevard.

THE LOCATION

Tower 1555 is conveniently located just east of Interstate 95, minutes from a heavy concentration of retail including, numerous restaurants, hotels, and the Palm Beach Outlets Mall. Tower 1555 also offers excellent accessibility to primary market drivers that include: Downtown West Palm Beach, CityPlace, the Clematis Street District and Palm Beach International Airport.

Excellent location on Palm
Beach Lakes Boulevard, minutes
from it all.





For additional information
please contact:

Michael Falk SIOR CCIM

Managing Director

+1 561 662 2624

michael.falk@colliers.com

Scott Weprin SIOR CCIM

Senior Director

+1 561 239 9386

scott.weprin@colliers.com

colliers.com

This document has been prepared by Colliers International for advertising and general information only. Colliers International makes no guarantees, representations or warranties of any kind, expressed or implied, regarding the information including, but not limited to, warranties of content, accuracy and reliability. Any interested party should undertake their own inquiries as to the accuracy of the information. Colliers International excludes unequivocally all inferred or implied terms, conditions and warranties arising out of this document and excludes all liability for loss and damages arising there from. This publication is the copyrighted property of Colliers International and/or its licensor(s). ©2019. All rights reserved.

Colliers International South Florida, LLC

901 Northpoint Parkway

Suite 109

West Palm Beach, FL 33407

Tel +1 561 478 6400



Accelerating success.

