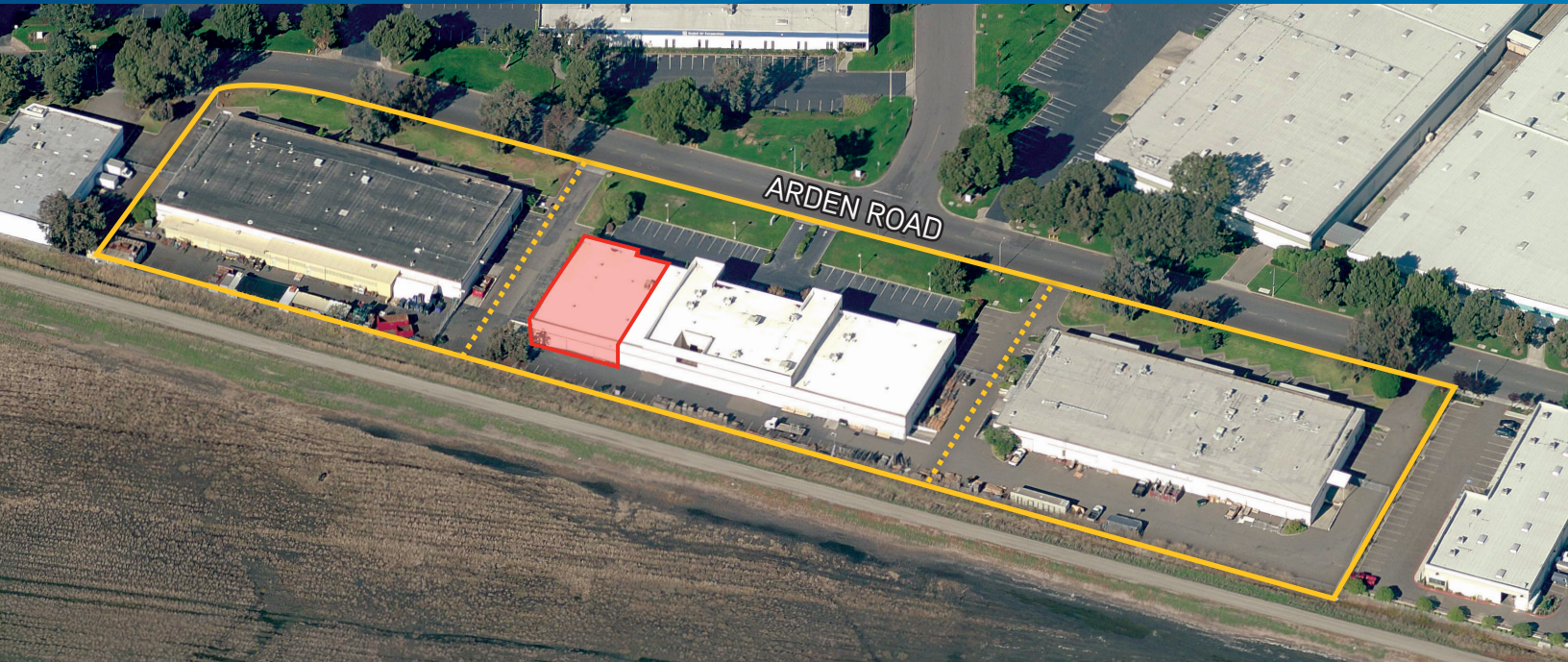


FOR LEASE > LIGHT INDUSTRIAL

3430 Arden Road

HAYWARD, CA



ADDRESS	SF	TYPE	FEATURES	RATE
3430 Arden Rd	10,387	Warehouse/Light Industrial	Functional Warehouse Space with Dock and Grade Level Loading, 25% Office/Corner Unit.	\$1.00 NNN (\$0.27 operating expenses)

PROPERTY OVERVIEW

3340–3450 Arden Road is comprised of three buildings totaling ±102,121 SF on ±4.93 Acres. This multi-tenant business park offers a mix of Light Industrial, Light Manufacturing and Office Space all located in the Eden Landing Area of Hayward. The Property offers prime street frontage on Arden Rd and is conveniently located with easy and immediate access to Highway 92, Highway 880, and Foster City/Peninsula via San Mateo Bridge. Additionally the premises is in close proximity to Highway 84/Dumbarton Bridge, The San Francisco and Oakland International Airports the Port of Oakland and the Silicon Valley.



NICK OUSMAN
+1 510 433 5820
nick.ousman@colliers.com
CA License No. 01908981

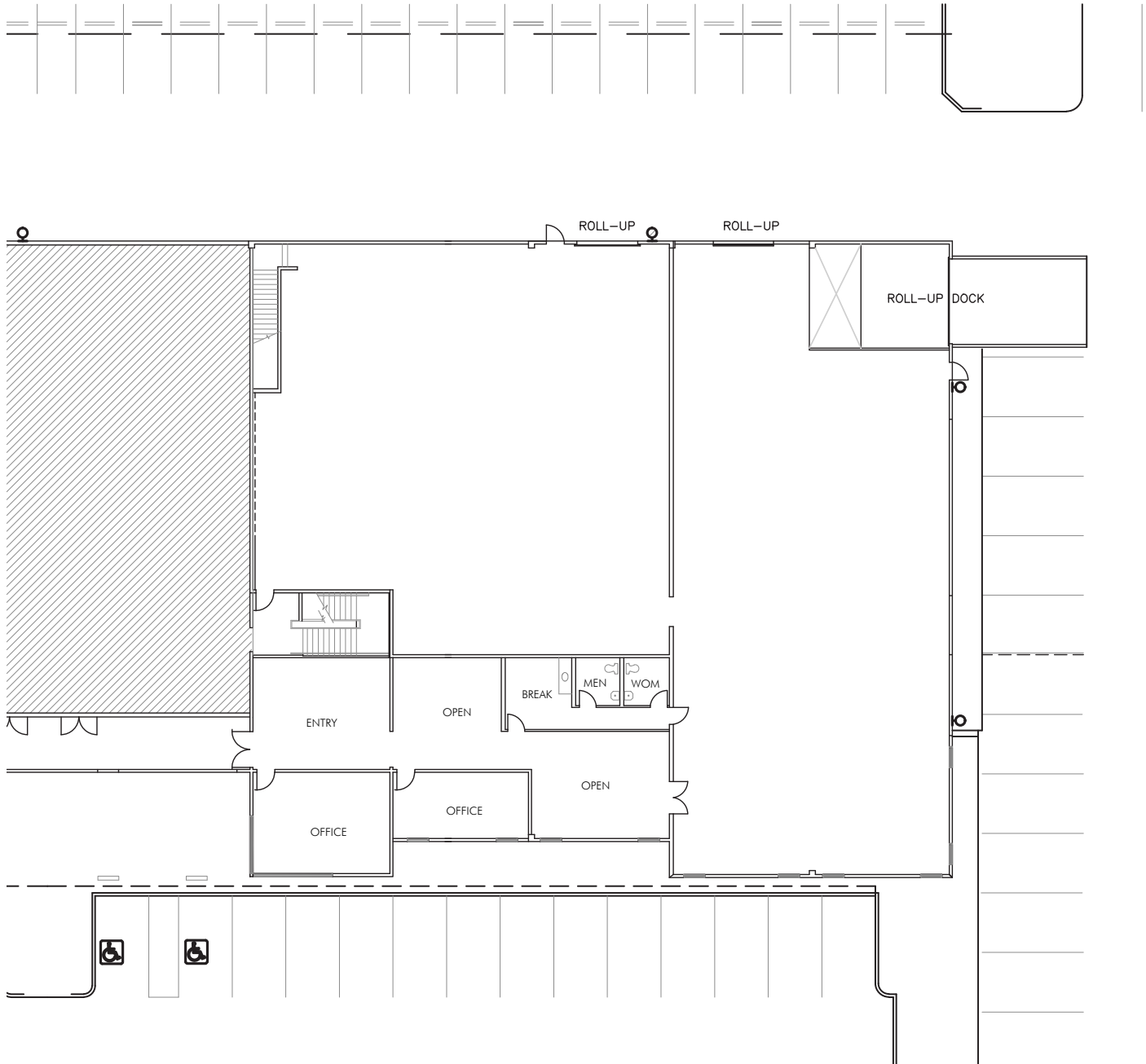
GREIG LAGOMARSINO, SIOR
+1 510 433 5809
greig.lago@colliers.com
CA License No. 01063817

COLLIERS INTERNATIONAL
1999 Harrison Street, Suite 1750
Oakland, CA 94612
www.colliers.com/oakland

FOR LEASE > LIGHT INDUSTRIAL

3430 Arden Road

HAYWARD, CA

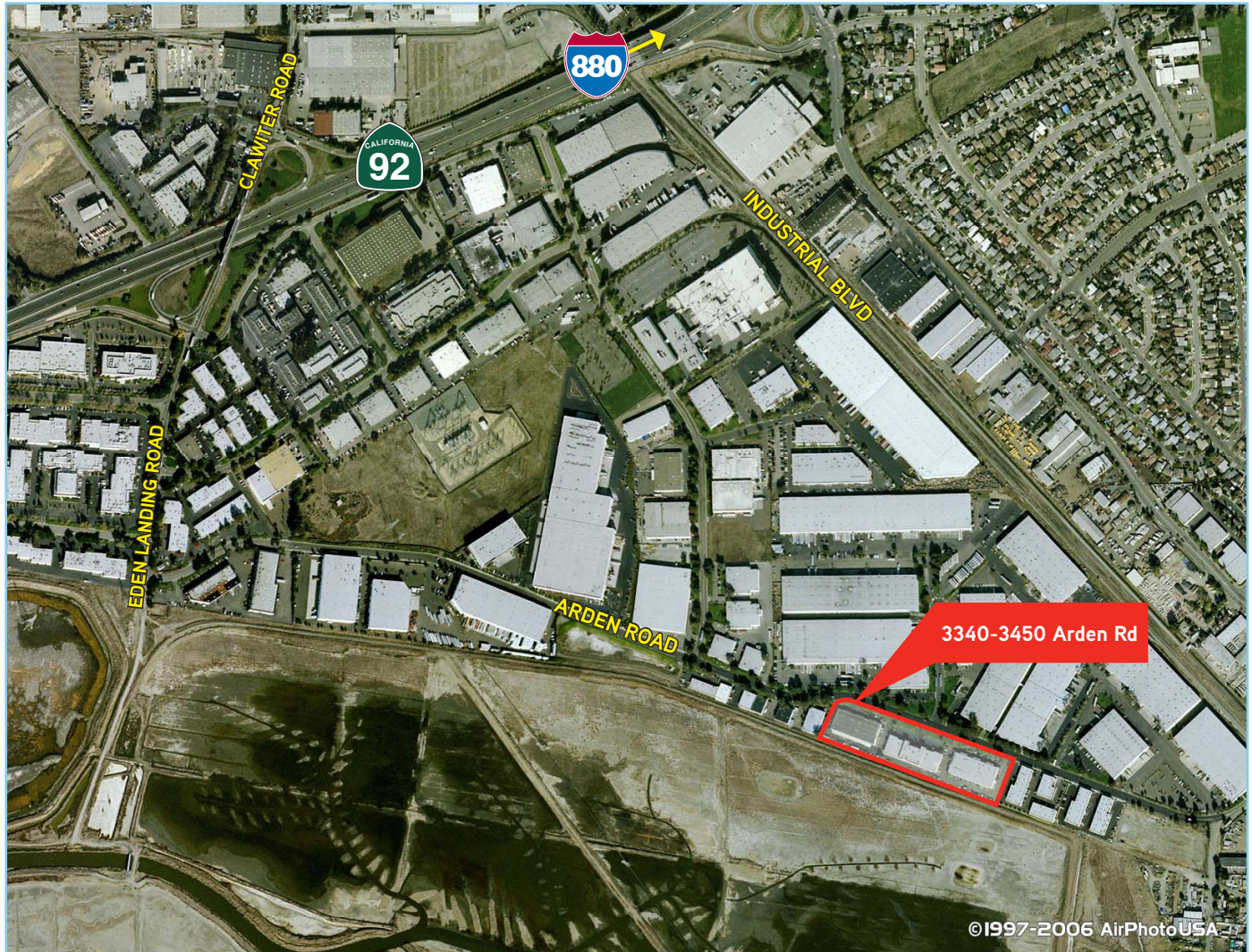


3430 Arden Road 
±10,387 SF

FOR LEASE > LIGHT INDUSTRIAL

3430 Arden Road

HAYWARD, CA



Contact Us

NICK OUSMAN

+1 510 433 5820

nick.ousman@colliers.com

CA License No. 01908981

GREIG LAGOMARSINO, SIOR

+1 510 433 5809

greig.lago@colliers.com

CA License No. 01063817

COLLIERS INTERNATIONAL

1999 Harrison Street, Suite 1750

Oakland, CA 94612

www.colliers.com/oakland

The information furnished has been obtained from sources we deem reliable and is submitted subject to errors, omissions and changes. Although Colliers International has no reason to doubt its accuracy, we do not guarantee it. All information should be verified by the recipient prior to lease, purchase, exchange, or execution of legal documents. © 2018 Colliers International