

FOR LEASE OR SALE > OFFICE SPACE

Millcreek Suites

4465 SOUTH 900 EAST SUITES 200-225 SALT LAKE CITY, UTAH



Property Information

- > Sales Price: 1,200,000
- > Lease Rate to \$14 NNN
- > 11 exam rooms, 5 offices, 4 bathrooms, Laboratory, Large Reception Area and Procedure Room.
- > Demisable into 2 Units:
Suite 200 4,318 SF and Suite 225 1,173 SF

DEMOGRAPHICS	1 MILE	3 MILE	5 MILE
Population			
2017 Estimated	21,445	146,885	347,147
2022 Projected	22,595	154,572	363,461
Households			
2017 Estimated	9,377	58,285	133,935
2022 Projected	9,881	61,377	140,317
Income			
2017 Median HHI	\$50,927	\$52,285	\$56,460
2017 Average HHI	\$64,623	\$71,391	\$77,237
2017 Per Capita	\$29,013	\$28,964	\$30,165

Information provided by ESRI Business Analyst

David Runnells
+1 801 427 1511
david.runnells@colliers.com

Colliers International
2100 Pleasant Grove Blvd. | Suite 200
Pleasant Grove, UT 84062
P: +1 801 610 1300

FOR LEASE OR SALE > OFFICE SPACE

Millcreek Suites

4465 SOUTH 900 EAST SUITES 200-225 SALT LAKE CITY, UTAH



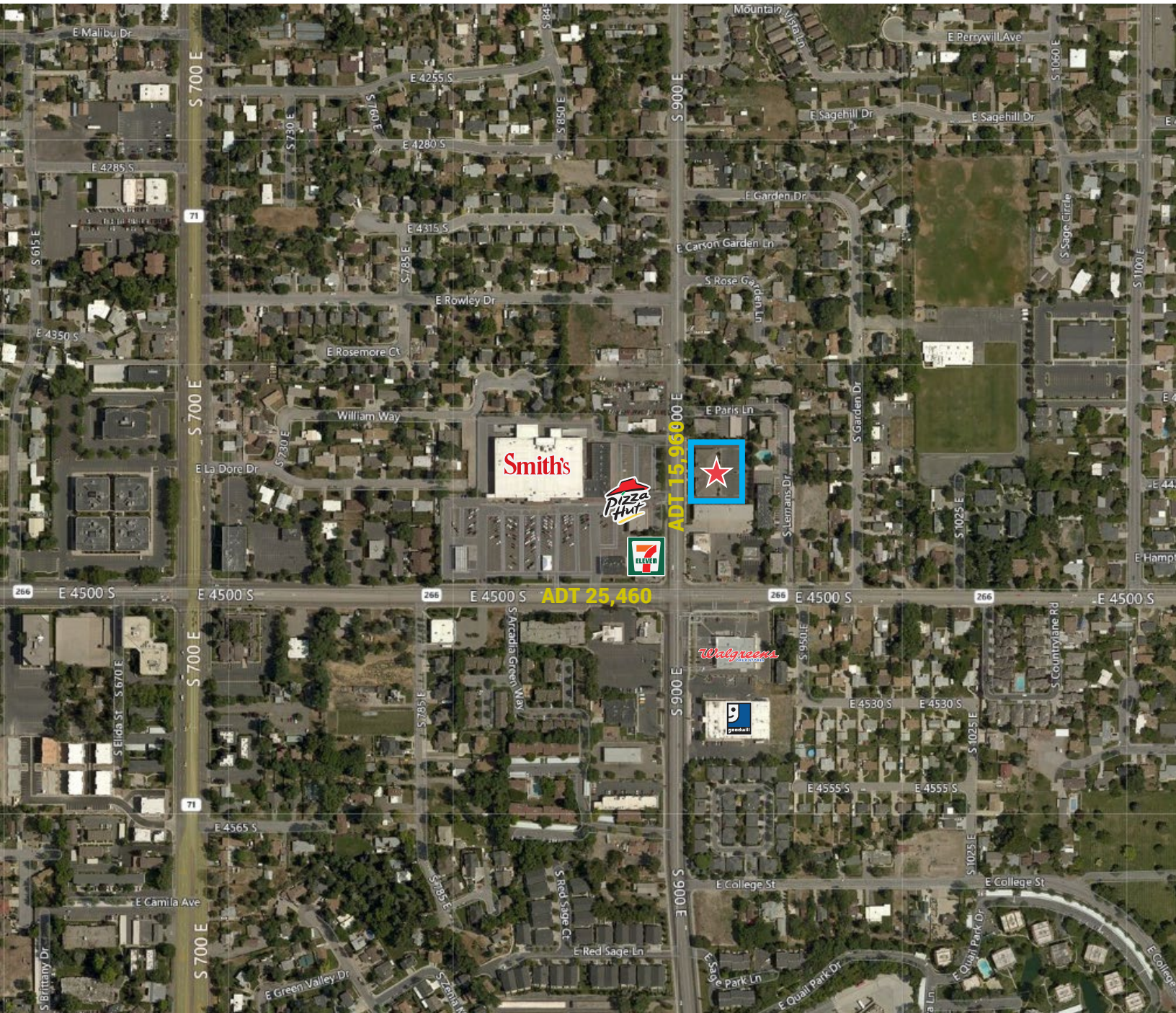
Colliers International
2100 Pleasant Grove Blvd. | Suite 200
Pleasant Grove, UT 84062
P: +1 801 610 1300



FOR LEASE OR SALE > OFFICE SPACE

Millcreek Suites

4465 SOUTH 900 EAST SUITES 200-225 SALT LAKE CITY, UTAH



This document has been prepared by Colliers International for advertising and general information only. Colliers International makes no guarantees, representations or warranties of any kind, expressed or implied, regarding the information including, but not limited to, warranties of content, accuracy and reliability. Any interested party should undertake their own inquiries as to the accuracy of the information. Colliers International excludes unequivocally all inferred or implied terms, conditions and warranties arising out of this document and excludes all liability for loss and damages arising there from. This publication is the copyrighted property of Colliers International and/or its licensor(s). ©2017. All rights reserved.

Colliers International
2100 Pleasant Grove Blvd. | Suite 200
Pleasant Grove, UT 84062
P: +1 801 610 1300

