

FOR SALE > 5,250 +/- SF



# 588 S Cooper Street

MEMPHIS, TENNESSEE 38104



Fantastic opportunity in the heart of Midtown Memphis! The subject property is 5,250 SF in size and has great frontage on Cooper Street near the intersection with Vinton Avenue. Zoning allows for many different uses, including restaurant or retail. Features include tall ceiling heights in half the building and some highly sought after off-street parking. Located adjacent to the new Hattie B's restaurant development, and nearby various other new office, restaurant, and entertainment concepts. Subject Property is situated directly in between the Overton Square and Cooper Young entertainment districts, less than 2 minutes from each.

## Property Features

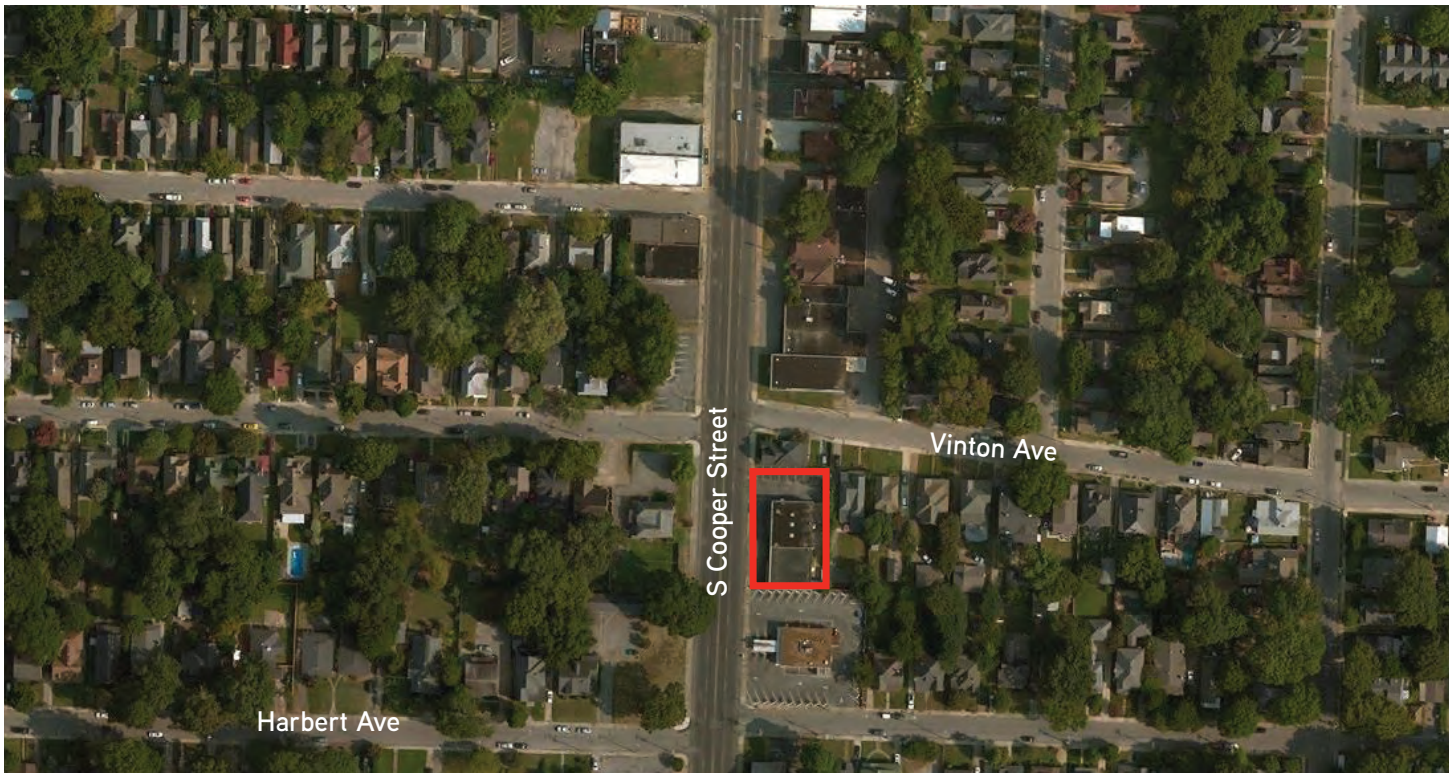
- > 5,250 +/- SF
- > 0.31 Acres
- > 147' of frontage on Cooper
- > Three private offices
- > Three restrooms
- > 13 parking spaces
- > Ceiling Heights 9.5' to 14.5'
- > Two rollup doors (10' x 12)(8' x 7')
- > Large retail counter
- > 1,800 +/- SF of gated storage area
- > Zoned CMU-3

AGENT: BEN RICKETTS  
901 375 4800 | EXT. 4909  
MEMPHIS, TN  
ben.ricketts@colliers.com

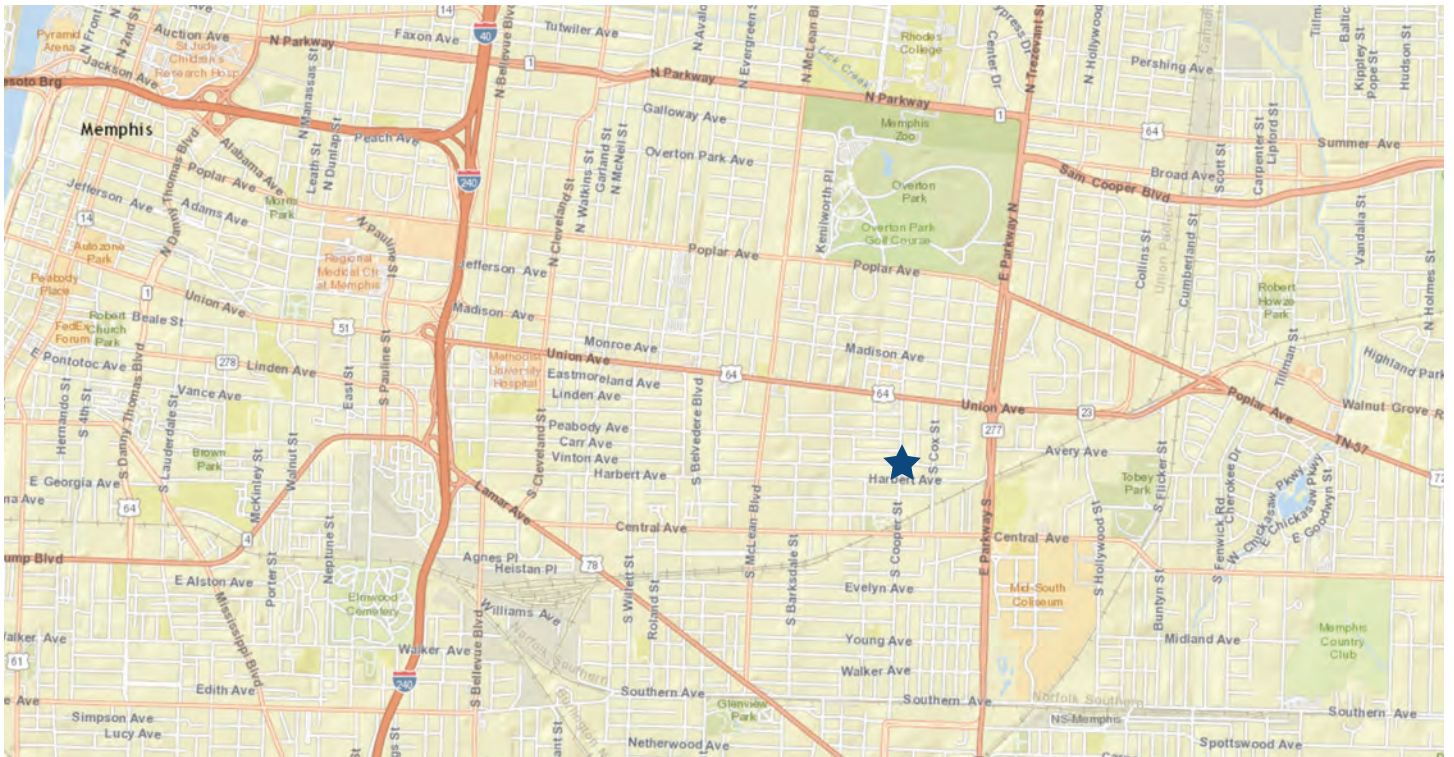
COLLIERS INTERNATIONAL  
6000 Poplar Avenue, Suite 201  
Memphis, TN 38119

[www.Colliers.com/memphis](http://www.Colliers.com/memphis)

## 588 S Cooper > Aerial View



## 588 S Cooper > Location Map



AGENT: BEN RICKETTS  
901 375 4800 | EXT. 4909  
MEMPHIS, TN  
ben.ricketts@colliers.com



Copyright © 2017 Colliers International.  
Information herein has been obtained from sources deemed reliable, however its accuracy cannot be guaranteed. The user is required to conduct their own due diligence and verification.