

# 1201 BROADWAY

Southwest corner of West 29<sup>th</sup> Street and Broadway

PREMIUM CORNER RETAIL OPPORTUNITY IN THE HEART OF NOMAD





# 1201 BROADWAY

Southwest corner of West 29<sup>th</sup> Street and Broadway

## PREMIUM CORNER RETAIL OPPORTUNITY IN THE HEART OF NOMAD



### SPACE SPECS

- Ground Floor: 9,125 SF
- Second Floor: 9,851 SF
- Lower Level: 6,666 SF
- Total: 25,642

### FRONTAGE

- Broadway: +/- 93'
- 29th Street: +/- 79'

### CEILING HEIGHTS

- Second: 13' - 4" slab-to-slab
- Ground: 12' - 6" slab-to-slab
- Lower Level: 11' - 8" slab-to-slab

### POSSESSION:

- Arranged

### LEASE TYPE:

- Direct

### ASKING RENT:

- Upon Request

### COMMENTS:

- Multi-level retail opportunity in the heart of NoMad
- Landlord to deliver all new glass storefronts
- Multiple divisions considered
- Food uses accepted
- Close to the 1, B, D, F, M, N, Q, R and W Trains

### NEIGHBORING TENANTS:

- Sweetgreen, The NoMad Hotel, The Ace Hotel, Little Beet, Opening Ceremony, Lady M, Vin Sur Vingt, The Smith, Quality Eats (coming), No. 7 Sandwich Shop, Maison Kitsune, Dr. Smood, Maxwell's Chop House and more

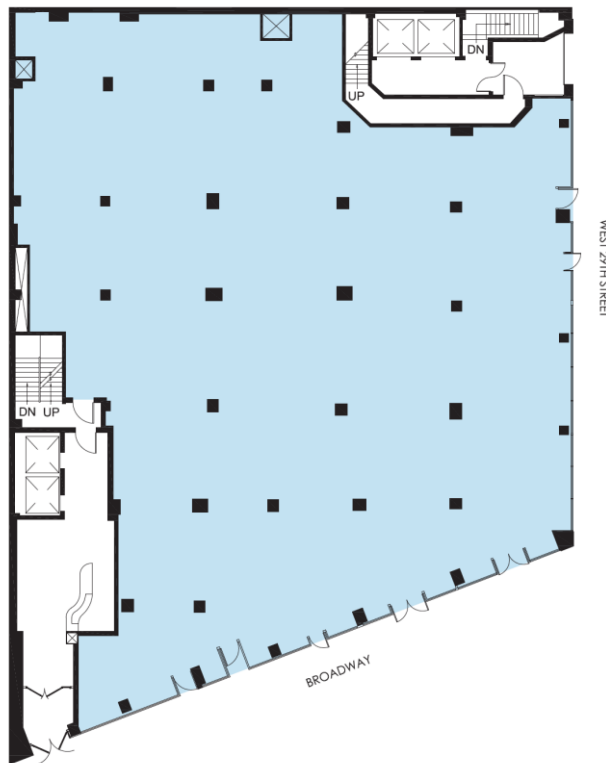


# 1201 BROADWAY

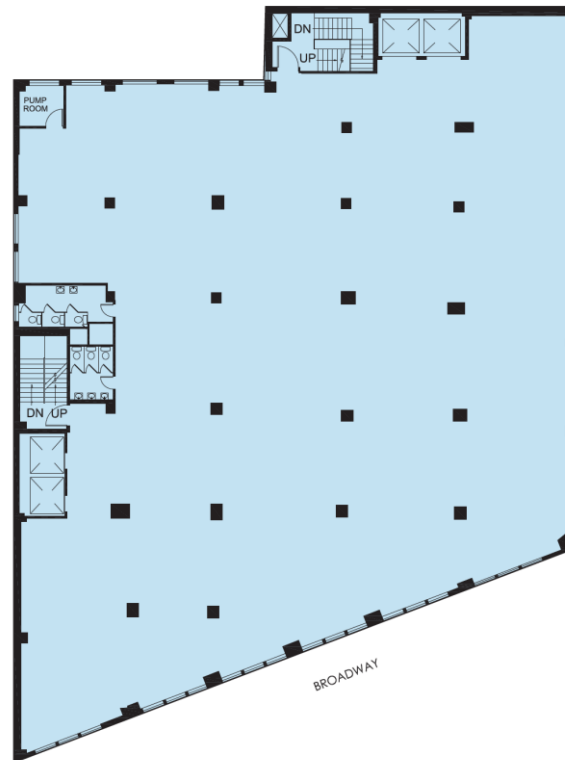
Southwest corner of West 29<sup>th</sup> Street and Broadway

FLOOR PLANS | TOTAL AVAILABLE SPACE: 25,642 SF

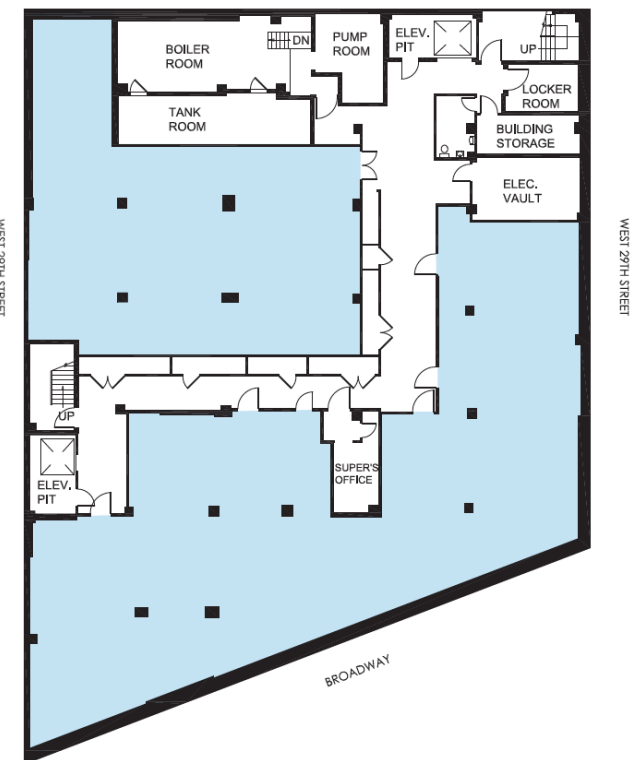
GROUND – 9,125 SF



SECOND FLOOR – 9,851 SF



LOWER LEVEL – 6,666 SF

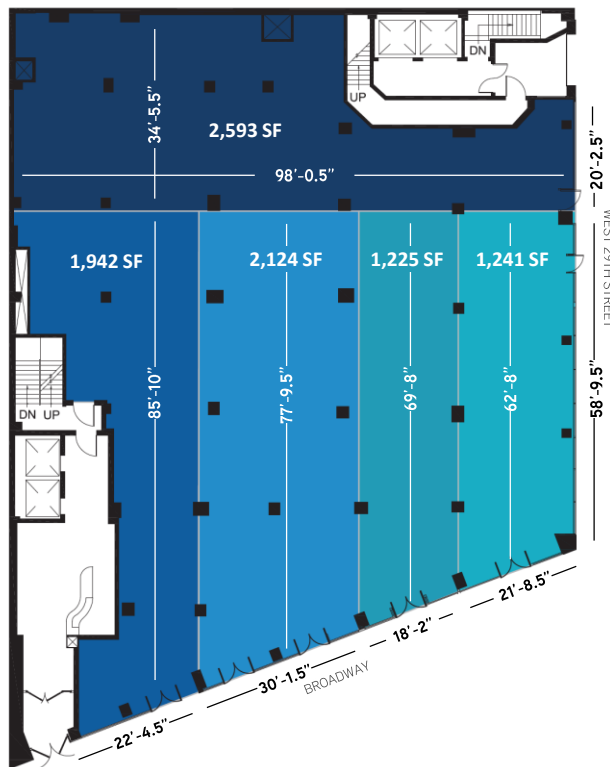


# 1201 BROADWAY

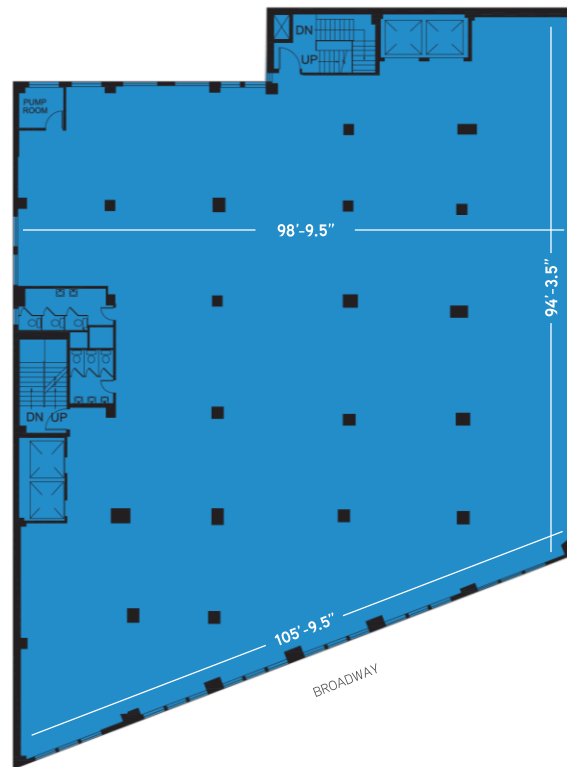
Southwest corner of West 29<sup>th</sup> Street and Broadway

POTENTIAL DIVISION PLANS | TOTAL AVAILABLE SPACE: 25,642 SF

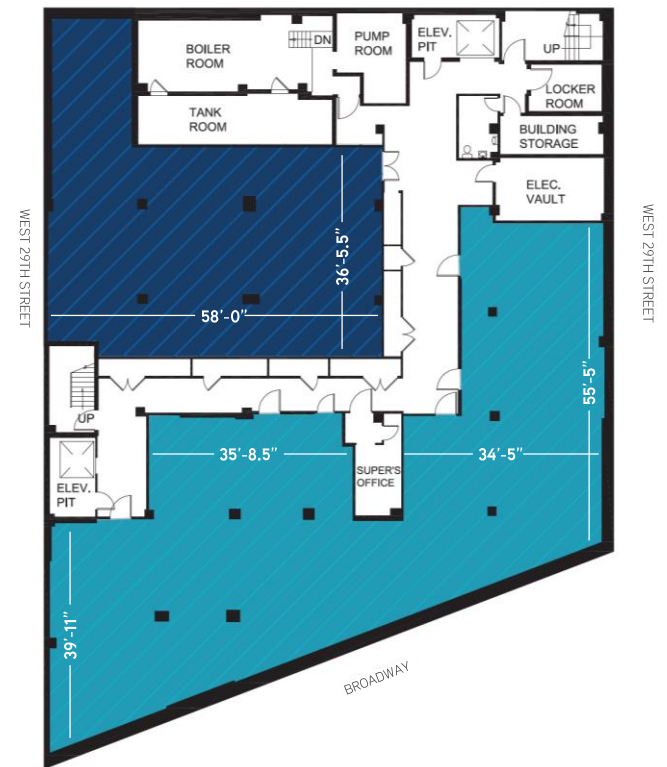
GROUND – 9,125 SF



SECOND FLOOR – 9,851 SF



LOWER LEVEL – 6,666 SF





# 1201 BROADWAY

Southwest corner of West 29<sup>th</sup> Street and Broadway

## AREA RETAIL

- 1 **THE ARLO**  
11-13 EAST 31<sup>ST</sup> STREET  
Hotel – 31 stories, 248 keys
- 2 **J.D. CARLISLE**  
15 EAST 30<sup>TH</sup> STREET  
70 stories, 76 ft tall, 370 sf, 88 apartments
- 3 **VICTOR HOMES**  
281 FIFTH AVENUE  
270,000 sf, 52 stories
- 4 **VIRGIN HOTEL**  
1205 BROADWAY  
Lam Group – 300 rooms
- 5 **FIVE POINTS DEVELOPMENT**  
260-264 FIFTH AVENUE  
150,018 sf, 54 stories, 928 ft tall, 41 apartments



- 6 **KAHEN PROPERTIES**  
143-145 MADISON AVENUE  
21 stories, 210 ft tall, 71 apartments
- 7 **16-18 EAST 30<sup>TH</sup> STREET, LLC**  
16-18 EAST 30<sup>TH</sup> STREET  
Hotel – 21 stories, 204 ft tall
- 8 **CASTELLAN REAL ESTATE PARTNERS**  
9 EAST 30<sup>TH</sup> STREET  
Residential building – 21 stories
- 9 **MCSAM HOTEL GROUP**  
292-296 FIFTH AVENUE  
Hotel – 20 stories, building just changed hands, plans not yet clear

# 1201 BROADWAY

Southwest corner of West 29<sup>th</sup> Street and Broadway

## NOMAD NEIGHBORHOOD

### DEMOGRAPHICS



106,040

DAYTIME  
POPULATION



62,400

RESIDENTS  
with an average household income of  
\$143,300

### SUBWAY LINES



15 MM+

ANNUAL RIDERSHIP  
on 3 nearby subway stations

6

OVER

7.1 MM

R W

OVER

4.2 MM

1

OVER

4.5 MM

B D F M  
R N Q W

OVER

39 MM

Rides annually @ 34<sup>th</sup>  
Street Herald Square

COLLIERS INTERNATIONAL, NY LLC

666 Fifth Avenue

New York, NY 10103

[www.colliers.com](http://www.colliers.com)

Nicole Mendelson  
[nicole.mendelson@colliers.com](mailto:nicole.mendelson@colliers.com)  
+1 212 716 3602

David. A Green  
[david.a.green@colliers.com](mailto:david.a.green@colliers.com)  
+1 212 716 3599

C. Bradley Mendelson  
[brad.mendelson@colliers.com](mailto:brad.mendelson@colliers.com)  
+1 212 716 3596

No representation is made as to the accuracy of the information furnished herein and same is submitted subject to errors, omissions, change of prices, rental, or other conditions, prior sale, lease, sublease, and/or withdrawal without notice. The furnishing of this information shall not be deemed a hiring. A commission in accordance with our principal's schedule of rates and conditions will be paid to the procuring Broker who executes our or our principal's brokerage agreement, subject to a fully consummated transaction upon terms and conditions acceptable to our principal.

