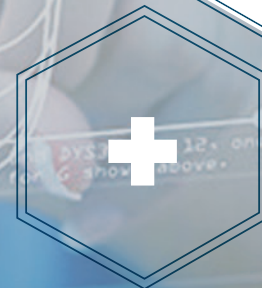


LMG

MEDICAL  
COMPLEX



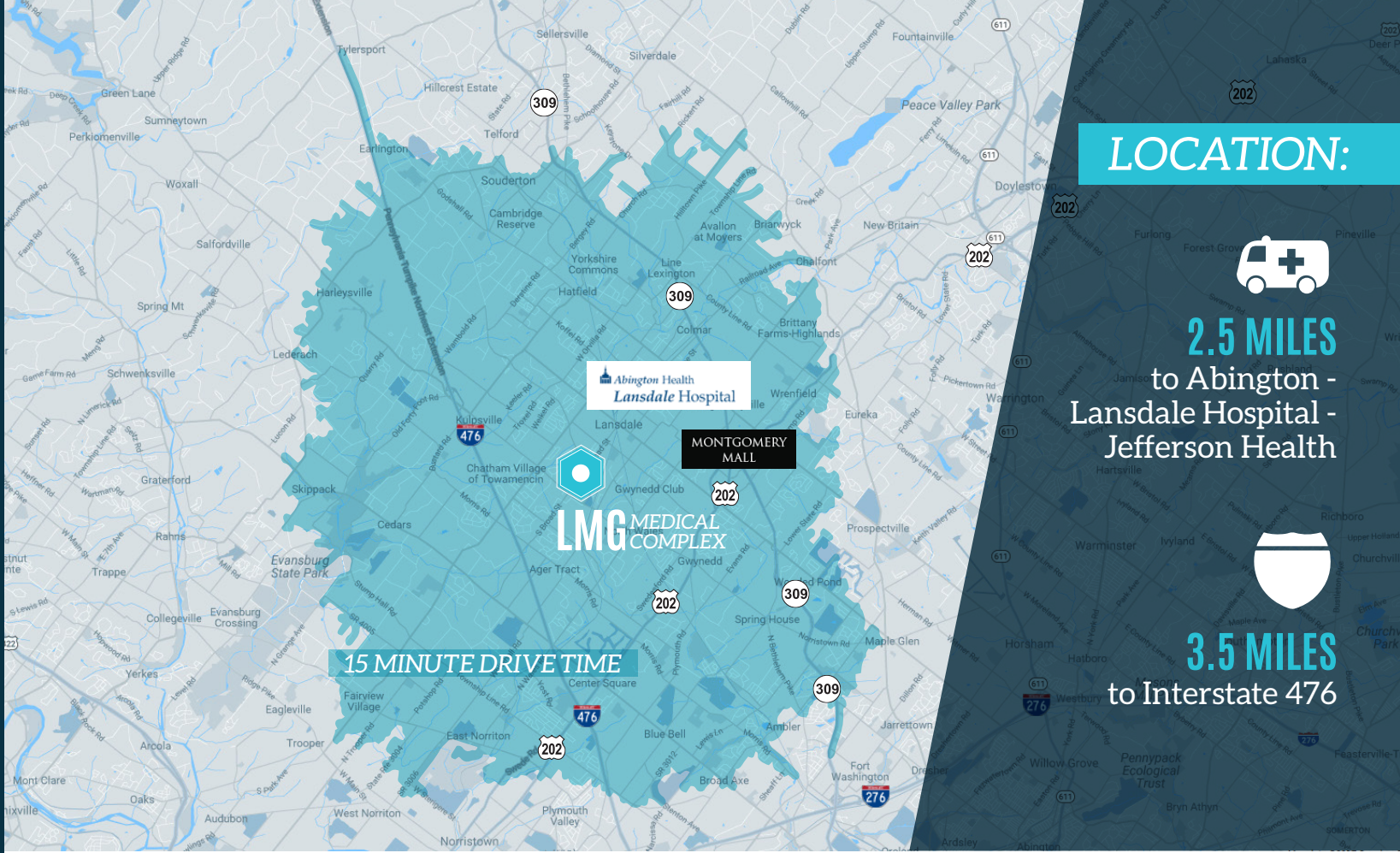
1001 S. BROAD STREET  
LANSDALE, PA



# LMG MEDICAL COMPLEX

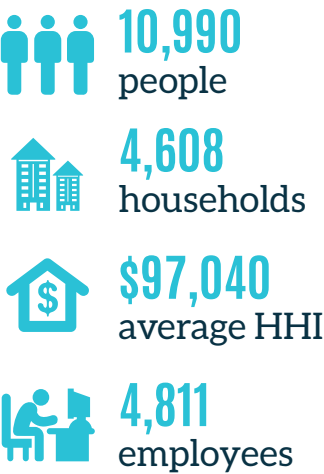
## PROPERTY FEATURES:

- 42,250+/- SF, six building complex on 9.56 acres
- Highly accessible and sought after medical complex in Upper Gwynedd
- Medical infrastructure in place – 2nd generation space available
- Flexible floor plans and layouts
- Abundant parking throughout
- Strong ownership on-site
- Ability to co-habitat in a strong medical and patient base
- Within 2.5 miles of Abington - Lansdale Hospital – Jefferson Health
- Proximity to the Northeast Extension, I-476, and major roadways

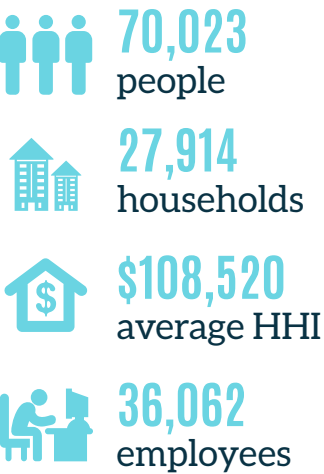


## DEMOGRAPHICS:

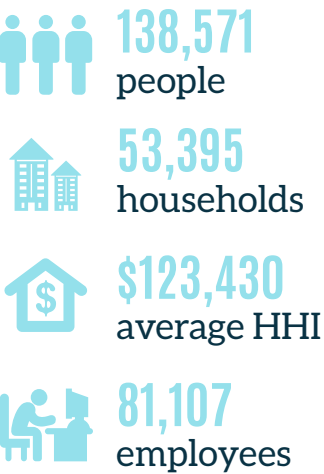
### WITHIN 1 MILE



### WITHIN 3 MILES



### WITHIN 5 MILES





*PLEASE CONTACT US:*

**JOHN SUSANIN**

Senior Vice President

+1 610 684 1860

[john.susanin@colliers.com](mailto:john.susanin@colliers.com)

**KYLE HILBERT**

Vice President

+1 610 615 1836

[kyle.hilbert@colliers.com](mailto:kyle.hilbert@colliers.com)

COLLIERS INTERNATIONAL  
161 Washington Street, Suite 1090  
Conshohocken, PA 19428  
[www.colliers.com/philadelphia](http://www.colliers.com/philadelphia)

