

FOR LEASE

# The Annex Building

470 SECOND STREET LAKE OSWEGO, OR 97034

Colliers  
INTERNATIONAL



## BUILDING HIGHLIGHTS

- 2,456 SF available.
- Seven private offices.
- Reception/waiting area.
- Conference room.
- Main level suite with loft-like views.
- Downtown Lake Oswego location.
- First time it has been available since initial construction!
- Walking distance to numerous retail and amenities in downtown Lake Oswego.
- Convenient access to Highway 43.

**RATE: \$28.00/SF + NNN** (NNN estimate: \$2,143.82/month)

JENNIFER MEDAK  
503 542 5899  
PORTLAND, OR  
jennifer.medak@colliers.com

COLLIERS INTERNATIONAL  
851 SW Sixth Avenue, Suite 1200  
Portland, Oregon 97204  
www.colliers.com

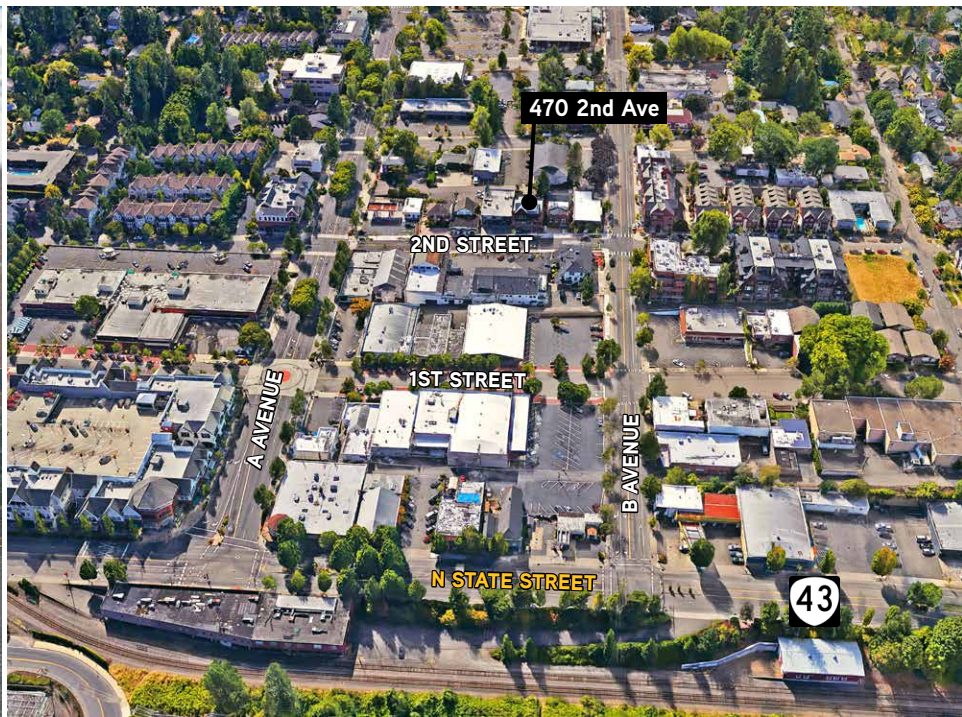
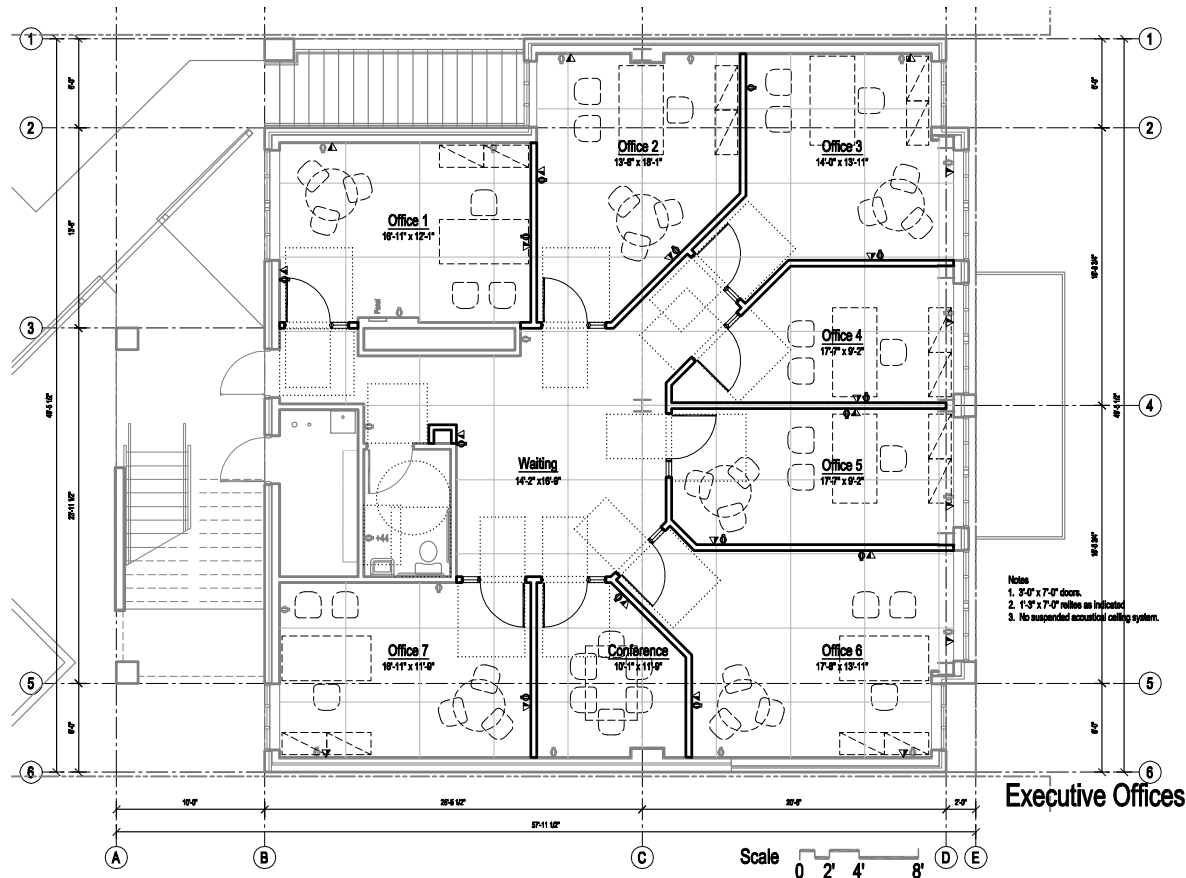


FOR LEASE

# The Annex Building

470 SECOND STREET LAKE OSWEGO, OR 97034

Floor Plan  
2,456 RSF



This document has been prepared by Colliers International for advertising and general information only. Colliers International makes no guarantees, representations or warranties of any kind, expressed or implied, regarding the information including, but not limited to, warranties of content, accuracy and reliability. Any interested party should undertake their own inquiries as to the accuracy of the information. Colliers International excludes unequivocally all inferred or implied terms, conditions and warranties arising out of this document and excludes all liability for loss and damages arising there from. This publication is the copyrighted property of Colliers International and/or its licensor(s). ©2017. All rights reserved. 12/4/17

