

2690 Snelling Ave N

For Lease



Nick Leviton, SIOR
Senior Vice President
+1 952 897 7843
nick.leviton@colliers.com

Claire Roberts, SIOR
Vice President
+1 952 897 7763
claire.roberts@colliers.com

1600 Utica Ave S, Suite 300
Minneapolis, MN 55416
+1 952 897 7700
colliers.com



Property Overview

- 2690 Snelling Ave N, Roseville, MN
- 17,193 square foot building
- Prime corner location at Snelling Ave and County Road C - a prominent intersection with high traffic visibility
- Situated within a vibrant commercial corridor featuring a strong mix of retail, office, industrial and residential development
- The immediate area includes Rosedale Center and major national retails such as Walmart, Target and more
- Easy access to I-35, Hwy 36 and County Road C

Available

Floor 1

Suite 100

4,654 SF Office

Floor 2

Suite 220

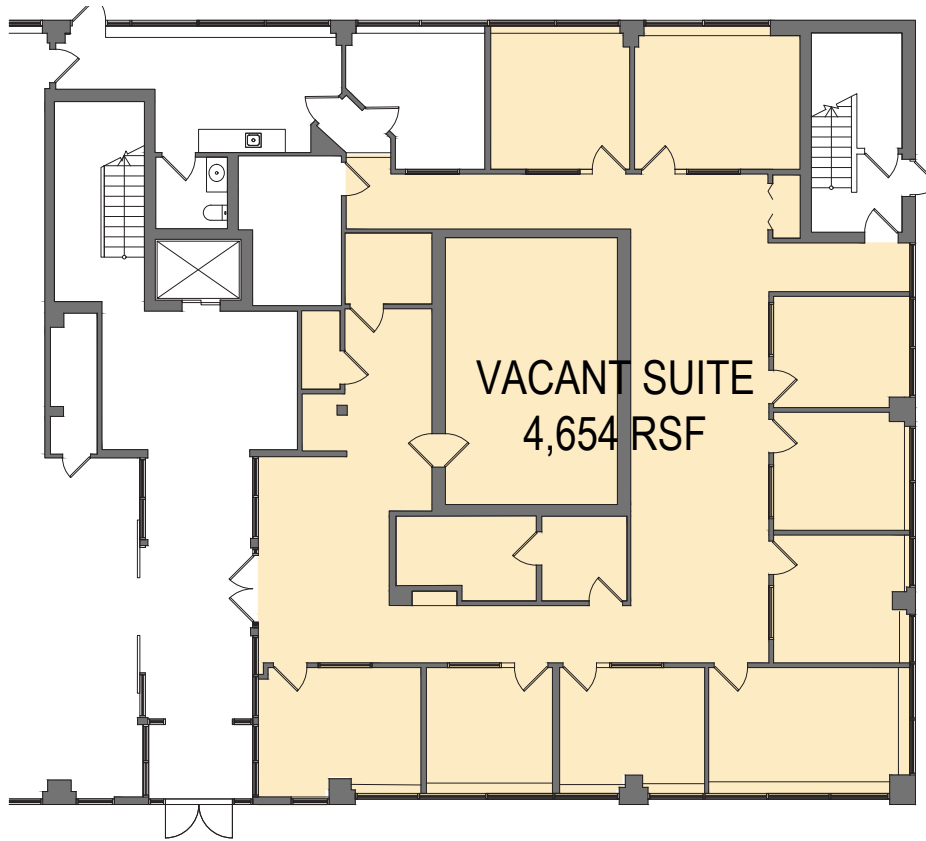
2,557 SF Office

Suite 250

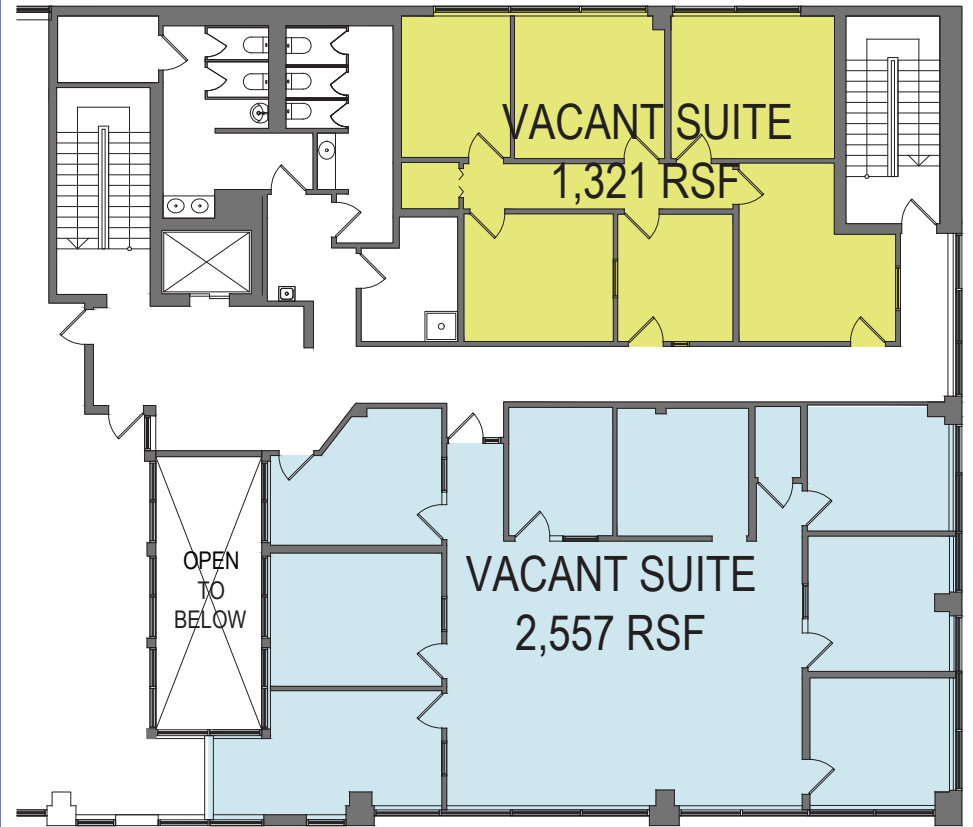
1,321 SF Office



Floor Plans



Floor 1
Suite 100
4,654 SF Office



Floor 2
Suite 220
2,557 SF Office
Suite 250
1,321 SF Office



1600 Utica Ave S, Suite 300
 Minneapolis, MN 55416
 +1 952 897 7700
 colliers.com

Nick Leviton, sior
 Senior Vice President
 +1 952 897 7843
 nick.leviton@colliers.com

Claire Roberts, sior
 Vice President
 +1 952 897 7763
 claire.roberts@colliers.com

This document has been prepared by Colliers International for advertising and general information only. Colliers International makes no guarantees, representations or warranties of any kind, expressed or implied, regarding the information including, but not limited to, warranties of content, accuracy and reliability. Any interested party should undertake their own inquiries as to the accuracy of the information. Colliers International excludes unequivocally all inferred or implied terms, conditions and warranties arising out of this document and excludes all liability for loss and damages arising there from. This publication is the copyrighted property of Colliers International and/or its licensor(s). ©2021. All rights reserved.