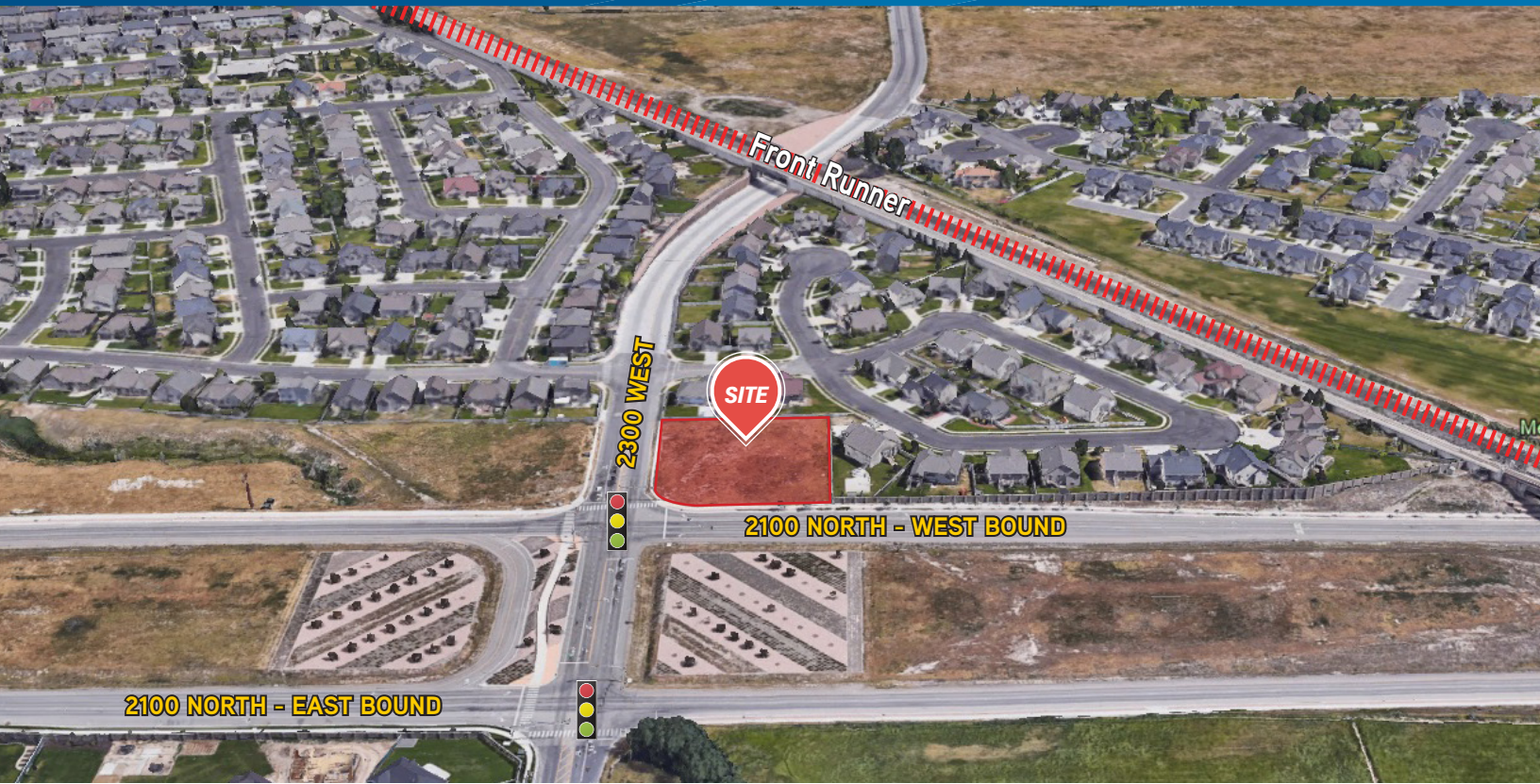


FOR SALE > COMMERCIAL LAND

# Hard Corner Commercial Land

2300 WEST 2100 NORTH LEHI, UTAH 84043



## Property Information

- > 0.92 Acres
- > Highly visible signalized corner
- > 370 feet of frontage road
- > All utilities available
- > Zoning: C-Zone (Commercial Development)
- > Permitted uses are general commercial, retail, and professional office
- > **Priced at \$841,579** (\$21.00 PSF)

DEMOGRAPHICS	1 MILE	3 MILE	5 MILE
Population			
2017 Estimated	5,704	62,589	109,441
2022 Projected	6,261	71,267	126,478
Households			
2017 Estimated	1,408	15,974	28,045
2022 Projected	1,543	18,102	32,350
Income			
2017 Median HHI	\$72,773	\$75,331	\$80,070
2017 Average HHI	\$87,902	\$89,972	\$98,387
2017 Per Capita	\$21,917	\$23,076	\$25,229

*Information provided by ESRI Business Analyst*

**Mary Street**  
+1 801 702 4693  
mary.street@colliers.com

**Bill Street**  
+1 801 666 4252  
bill.street@colliers.com

**Colliers International**  
2100 Pleasant Grove Blvd. | Suite 200  
Pleasant Grove, UT 84062  
P: +1 801 610 1300



# Hard Corner Commercial Land

