

FOR LEASE

CLASS A OFFICE SPACE

441 Industrial Drive
Lexington, SC 29072

MARY WINTER TEASTER | 803 401 4308 | mary.teaster@colliers.com





441 Industrial Drive, Lexington, SC

FOR LEASE

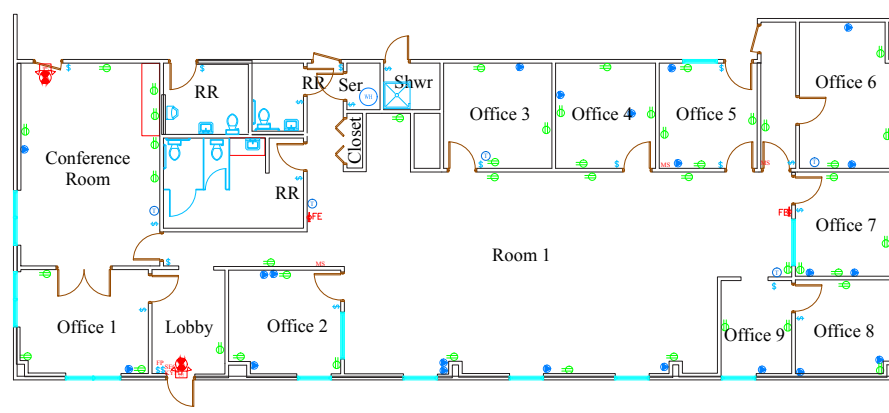


About

This is a Class A building fully heated and air-conditioned. It contains $\pm 3,500$ SF of finished office space. The property is located in Lexington County near I-20. Neighbors include Pirelli Cable Corp and Michelin Tire Corp.

Building Amenities

- > $\pm 3,500$ SF with 9 Offices
- > Conference room, central collaborative space, reception area & coffee/break bar
- > Over 35 parking spaces with outdoor landscaped patio
- > Quick and easy access off Interstate 20 at Exit 55
- > Move-in ready with excellent signage



Lease Rate

\$14.50 PSF/FS

Contact Us

MARY WINTER TEASTER

803 401 4308

mary.teaster@colliers.com

This document/email has been prepared by Colliers International for advertising and general information only. Colliers International makes no guarantees, representations or warranties of any kind, expressed or implied, regarding the information including, but not limited to, warranties of content, accuracy and reliability. Any interested party should undertake their own inquiries as to the accuracy of the information. Colliers International excludes unequivocally all inferred or implied terms, conditions and warranties arising out of this document and excludes all liability for loss and damages arising there from. This publication is the copyrighted property of Colliers International and/or its licensor(s). © 2016. All rights reserved. This communication is not intended to cause or induce breach of an existing listing agreement.



Colliers International
1301 Gervais Street, Suite 600
Columbia, South Carolina 29201
803 254 2300
www.colliers.com