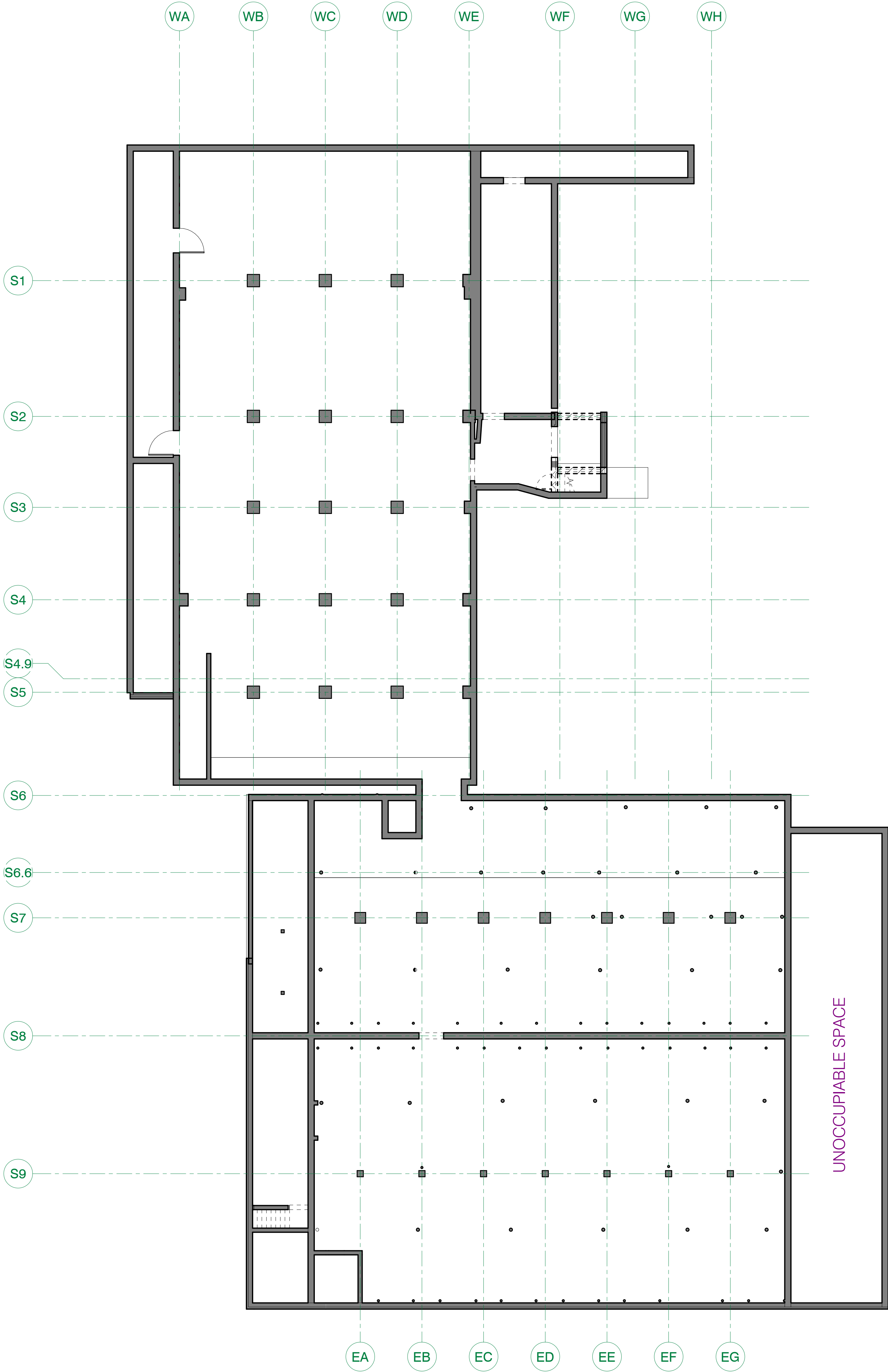


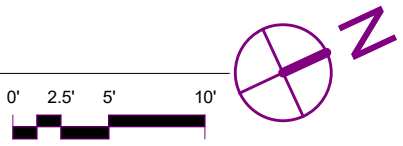
3/2/2018 12:43:38 PM C:\Itext\Project Files\16-0023 A18 Central\_Jeppanen@urban-works.com.rvt



UNOCCUPIABLE SPACE

UNOCCUPIABLE SPACE

**1** SUBLEVEL - DEMO PLAN  
D001 1" = 10'-0"



GENERAL DEMOLITION NOTES:

- |   |  |
|---|--|
| 1. PROTECT ADJACENT AREAS OF DEMOLITION WORK FROM DAMAGE  | 8. SEE ELEVATIONS FOR NOTES REGARDING WINDOW REPAIR AND REMOVAL.   |
| 2. COORDINATE DEMOLITION EFFORTS WITH NEW CONSTRUCTION  | 9. CONTRACTOR TO VISIT SITE AND FAMILIARIZE HIMSELF WITH THE CONDITIONS. INCLUDE REMOVAL OF ALL ITEMS REQUIRED TO DO THE WORK.   |
| 3. IF SALVAGING MATERIAL, STORE SAFELY ON SITE TO AVOID DAMAGE  | 10. AT CONCRETE COLUMNS, PREPARE SURFACE FOR PAINTING FOLLOWING HAZARDOUS MATERIAL ABATEMENT; MUST OBTAIN APPROVAL PRIOR TO PROCEEDING.  |
| 4. REMOVE ALL UNUSED EQUIPMENT & PLUMBING UNLESS NOTED OTHERWISE.   | 11. AT WOOD BEAMS, COLUMNS, AND JOISTS, CLEAN WOOD, ASSOCIATED METAL STRAPPING, AND PREPARE FOR NEW PAINTED FINISH FOLLOWING HAZARDOUS MATERIAL ABATEMENT AS INDICATED IN HAZARDOUS MATERIAL REPORT. |
| 5. GENERAL CLEANING OF ALL DEBRIS & LOOSE ITEMS TO BE PART OF DEMOLITION IN PREPARATION OF NEW CONSTRUCTION   | 12. AT ALL EXISTING PORTIONS TO REMAIN, REMOVE MOLD, MILDEW, ALGAE THROUGHOUT PRIOR TO CONSTRUCTING NEW WORK.  |
| 6. CLEAN EXISTING EXPOSED EXTERIOR & INTERIOR BRICK AND TILE WALLS OF ALL PAINT AND GRAFFITI. USE METHODS ACCEPTABLE TO DEPARTMENT OF INTERIORS STANDARDS FOR HISTORIC RENOVATION; SEE ALTERNATE FOR DESCRIPTION OF OPTIONS; NOTE BASE BID IS TO USE CHEMICAL CLEANER, BUT LIGHTER METHODS SHOULD BE EVALUATED AND CREDIT GIVEN SHOULD GENTLER MEANS BE ADEQUATE. | 13. AT EXISTING DAMAGED WOOD FLOOR OPENINGS UP TO 8' X 8" - (VISIBLE FROM UNDERSIDE) PROVIDE SHEET METAL PLATE SET IN SEALANT PRIOR TO POURING, ANYTHING LARGER PROVIDE REPLACEMENT DECKING          |
| 7. IF CONTRACTOR HAS QUESTION REGARDING DEMOLITION SCOPE OF WORK, CONTACT ARCHITECT / OWNER PRIOR TO PROCEEDING   |  |

HBG

PAK PROPERTIES



Superior

2103 Wabash Avenue  
Saint Paul, MN 55114

URBANWORKS

© URBANWORKS ARCHITECTURE LLC, 2017  
901 NORTH THIRD STREET, SUITE 145, MINNEAPOLIS, MN 55401

CONSULTANT

NOT FOR  
CONSTRUCTION

PRICING SET  
03.21.2018

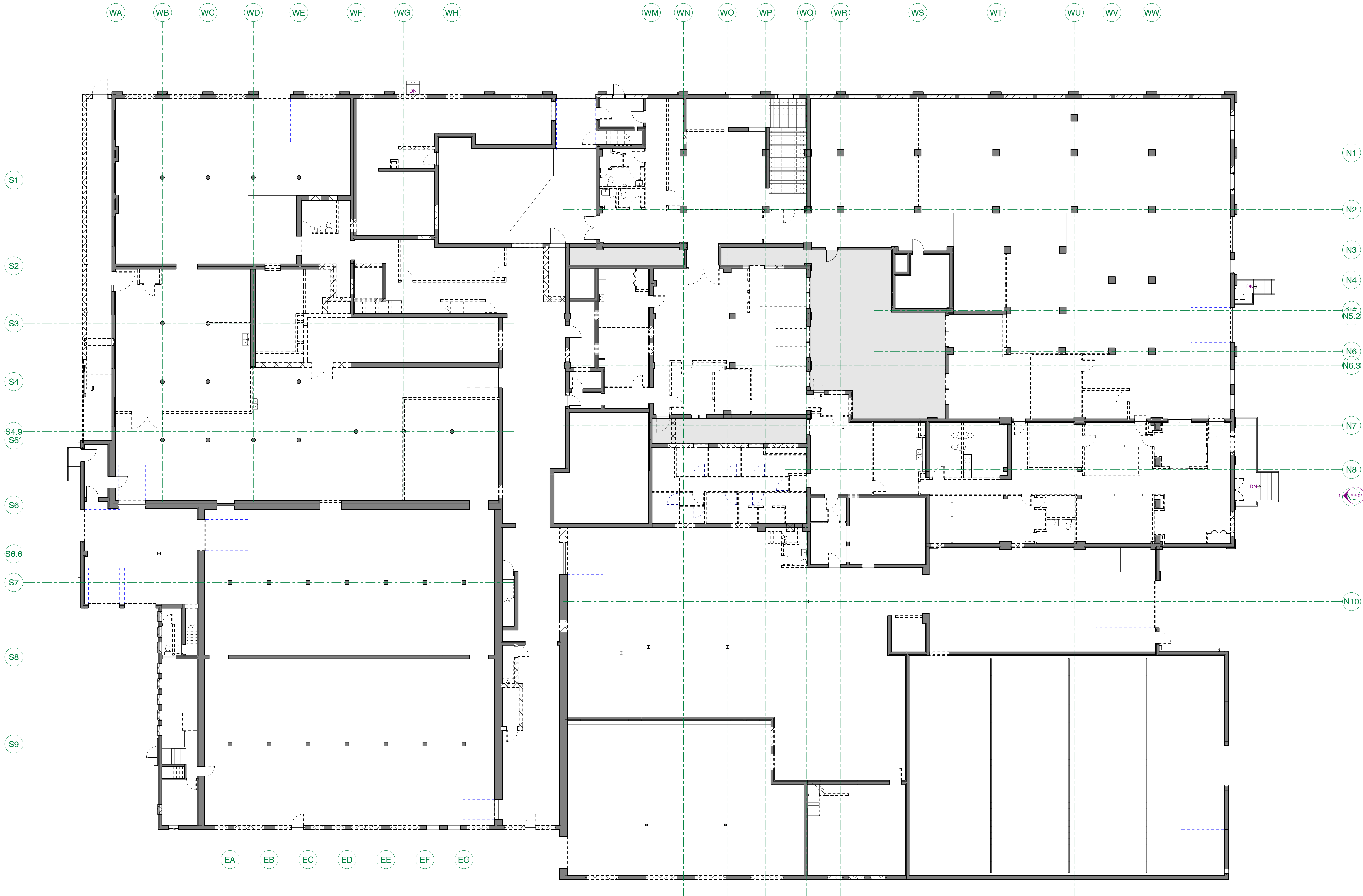
REVISIONS

DATE 2/6/2018  
PROJECT # 16-0023  
PHASE SD  
DRAWN BY Author  
CHECKED BY Checker

SUBLEVEL DEMO  
PLAN - OVERALL

D001

C:\text\Project Files\16-0023 A18 Central\_Jeppanen@urban-works.com.rvt 3/2/2018 12:41 PM



**1** LEVEL 1 - DEMO PLAN  
D101 1" = 10'-0"

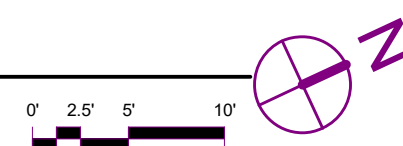
### DEMOLITION KEYNOTES

- D01 REMOVE EXISTING MASONRY TO HISTORIC OPENING. PREPARE FOR INSTALLATION OF NEW WINDOW  
D02 REMOVE DOOR AND FRAME TO HISTORIC OPENING. PREPARE FOR INSTALLATION OF NEW DOOR  
D03 CREATE NEW OPENING IN EXISTING MASONRY FOR NEW WINDOW / DOOR  
D04 REMOVE EXISTING MASONRY / WINDOW TO HISTORIC OPENING. PREPARE FOR NEW WINDOW  
D05 REMOVE OVERHEAD GARAGE DOOR  
D06 REMOVE INFILL PANEL FOR NEW WINDOW  
D07 REMOVE CORNER GUARD, REPAIR BRICK AS NEEDED  
D08 REMOVE VINES ON BRICK MASONRY  
D09 REMOVE LIGHT FIXTURE  
D10 REMOVE DOWNSPOUT  
D11 REMOVE SIGNAGE AND / OR AWNING  
D12 REMOVE BLOCK STRUCTURE, REMOVE ALL MATERIALS FROM BRICK MASONRY WALL BEYOND, PREPARE FOR TUCK POINT  
D16 REMOVE LOADING DOCK HOOD AND PADS

- D17 REMOVE DOOR AND FRAME  
D19 REMOVE EXISTING WINDOW, INSTALL NEW WINDOW TO MATCH HISTORIC OPENING  
D20 REMOVE MASONRY INFILL, PREPARE ROUGH OPENING FOR NEW MASONRY TO MATCH  
D21 REMOVE GLAZING, STRUCTURE TO REMAIN  
D22 REMOVE EXISTING WOODEN PLANTER  
D23 REMOVE EXISTING MASONRY TO HISTORIC OPENING. PREPARE FOR INSTALLATION OF NEW INFILL WALL  
D24 REMOVE DOOR AND FRAME TO HISTORIC OPENING. PREPARE FOR INSTALLATION OF NEW INFILL WALL  
D26 REMOVE EXISTING DOWNSPOUT  
D27 REMOVE EXISTING PLYWOOD OVER WINDOW, INSTALL NEW WINDOW TO RESTORE LIGHT MONITOR

### GENERAL DEMOLITION NOTES:

- PROTECT ADJACENT AREAS OF DEMOLITION WORK FROM DAMAGE
- COORDINATE DEMOLITION EFFORTS WITH NEW CONSTRUCTION
- IF SALVAGING MATERIAL, STORE SAFELY ON SITE TO AVOID DAMAGE
- REMOVE ALL UNUSED EQUIPMENT & PLUMBING UNLESS NOTED OTHERWISE.
- GENERAL CLEANING OF ALL DEBRIS & LOOSE ITEMS TO BE PART OF DEMOLITION IN PREPARATION OF NEW CONSTRUCTION
- CLEAN EXISTING EXPOSED EXTERIOR & INTERIOR BRICK AND TILE WALLS OF ALL PAINT AND GRAFFITI. USE METHODS ACCEPTABLE TO DEPARTMENT OF INTERIORS STANDARDS FOR HISTORIC RENOVATION; SEE ALTERNATE FOR DESCRIPTION OF OPTIONS. NOTE BASE BID IS TO USE CHEMICAL CLEANER, BUT LIGHTER METHODS SHOULD BE EVALUATED AND CREDIT GIVEN SHOULD GENTLER MEANS BE ADEQUATE.
- IF CONTRACTOR HAS QUESTION REGARDING DEMOLITION SCOPE OF WORK, CONTACT ARCHITECT / OWNER PRIOR TO PROCEEDING
- SEE ELEVATIONS FOR NOTES REGARDING WINDOW REPAIR AND REMOVAL.
- CONTRACTOR TO VISIT SITE AND FAMILIARIZE HIMSELF WITH THE CONDITIONS; INCLUDE REMOVAL OF ALL ITEMS REQUIRED TO DO THE WORK
- AT CONCRETE COLUMNS, PREPARE SURFACE FOR PAINTING FOLLOWING HAZARDOUS MATERIAL ABATEMENT. MUST OBTAIN APPROVAL PRIOR TO PROCEEDING.
- AT WOOD BEAMS, COLUMNS, AND JOISTS, CLEAN WOOD, ASSOCIATED METAL STRAPPING, AND PREPARE FOR NEW PAINTED FINISH FOLLOWING HAZARDOUS MATERIAL ABATEMENT AS INDICATED IN HAZARDOUS MATERIAL REPORT.
- AT ALL EXISTING PORTIONS TO REMAIN, REMOVE MOLD, MILDEW, ALGAE THROUGHOUT PRIOR TO CONSTRUCTING NEW WORK.
- AT EXISTING DAMAGED WOOD FLOOR OPENINGS UP TO 8" X 8" (VISIBLE FROM UNDERSIDE) PROVIDE SHEET METAL PLATE SET IN SEALANT PRIOR TO POURING; ANYTHING LARGER PROVIDE REPLACEMENT DECKING



**HBG**

PAK PROPERTIES



Superior

2103 Wabash Avenue  
Saint Paul, MN 55114

URBANWORKS

CONSULTANT

NOT FOR  
CONSTRUCTION

PRICING SET  
03.21.2018

REVISIONS

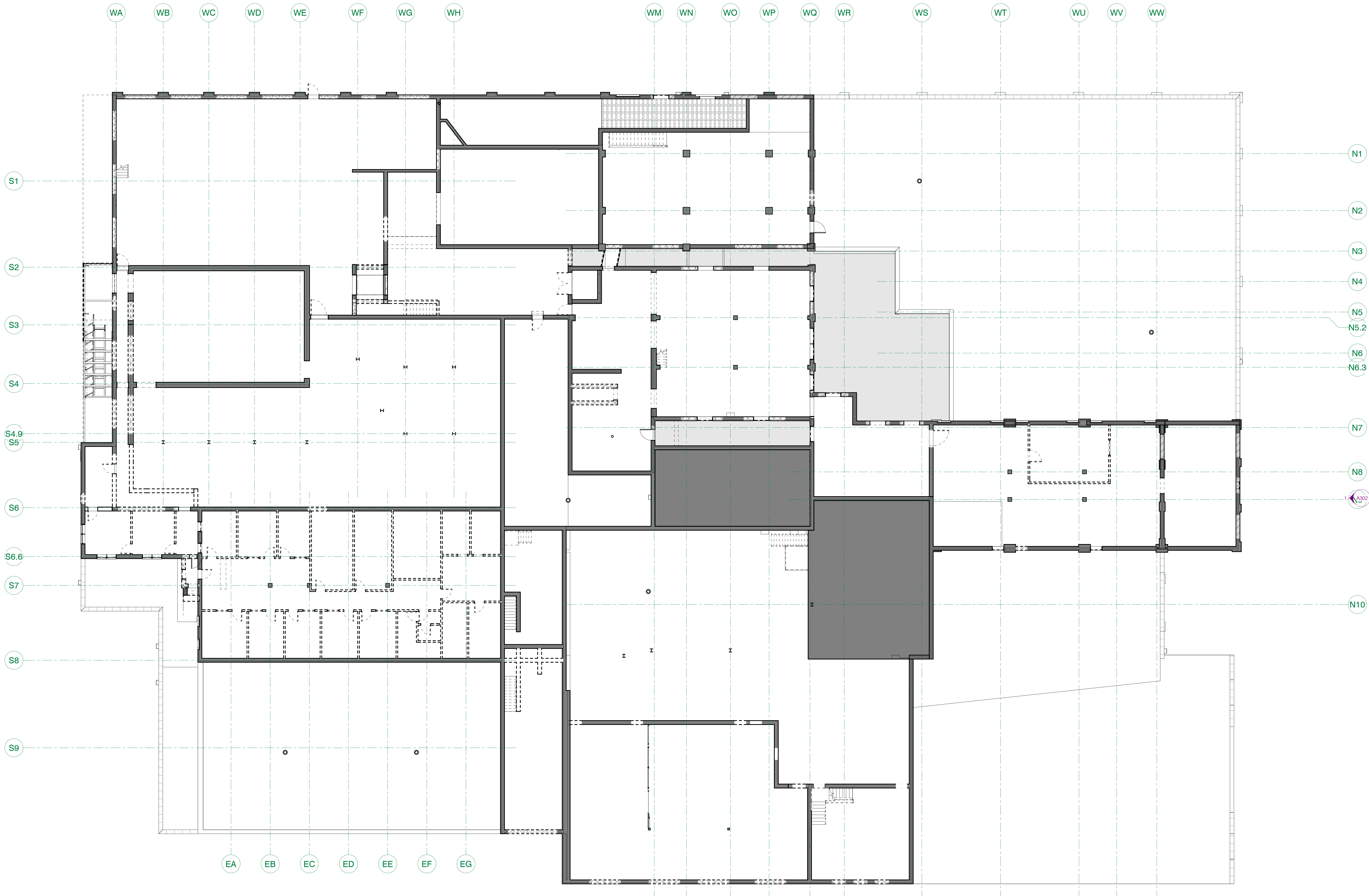
DATE 2/6/2018  
PROJECT # 16-0023  
PHASE SD  
DRAWN BY Author  
CHECKED BY Checker

LEVEL 1 DEMO  
PLAN - OVERALL

D101



C:\I\ext\Project Files\16-0023 A18 Central\_Jeppanen@urban-works.com.rvt 3/2/2018 1:24:44 PM



**1** LEVEL 2 - DEMO PLAN  
D102 1" = 10'-0"

### DEMOLITION KEYNOTES

- D01 REMOVE EXISTING MASONRY TO HISTORIC OPENING. PREPARE FOR INSTALLATION OF NEW WINDOW  
D02 REMOVE DOOR AND FRAME TO HISTORIC OPENING. PREPARE FOR INSTALLATION OF NEW DOOR  
D03 CREATE NEW OPENING IN EXISTING MASONRY FOR NEW WINDOW / DOOR  
D04 REMOVE EXISTING MASONRY / WINDOW TO HISTORIC OPENING. PREPARE FOR NEW WINDOW  
D05 REMOVE OVERHEAD GARAGE DOOR  
D06 REMOVE INFILL PANEL FOR NEW WINDOW  
D07 REMOVE CORNER GUARD, REPAIR BRICK AS NEEDED  
D08 REMOVE VINES ON BRICK MASONRY  
D09 REMOVE LIGHT FIXTURE  
D10 REMOVE DOWNSPOUT  
D11 REMOVE SIGNAGE AND / OR AWNING  
D12 REMOVE BLOCK STRUCTURE, REMOVE ALL MATERIALS FROM BRICK MASONRY WALL BEYOND, PREPARE FOR TUCK POINT  
D15 REMOVE BLOCK STRUCTURE, REMOVE ALL MATERIALS FROM BRICK MASONRY WALL BEYOND, PREPARE FOR TUCK POINT  
D16 REMOVE LOADING DOCK HOOD AND PADS

- D17 REMOVE DOOR AND FRAME  
D19 REMOVE EXISTING WINDOW. INSTALL NEW WINDOW TO MATCH HISTORIC OPENING  
D20 REMOVE MASONRY INFILL. PREPARE ROUGH OPENING FOR NEW MASONRY TO MATCH  
D21 REMOVE CLADDING. STRUCTURE TO REMAIN  
D22 REMOVE EXISTING WOODEN PLANTER  
D23 REMOVE EXISTING MASONRY TO HISTORIC OPENING. PREPARE FOR INSTALLATION OF NEW INFILL WALL  
D24 REMOVE DOOR AND FRAME TO HISTORIC OPENING. PREPARE FOR INSTALLATION OF NEW INFILL WALL  
D26 REMOVE EXISTING DOWNSPOUT  
D27 REMOVE EXISTING PLYWOOD OVER WINDOW. INSTALL NEW WINDOW TO RESTORE LIGHT MONITOR

### GENERAL DEMOLITION NOTES:

1. PROTECT ADJACENT AREAS OF DEMOLITION WORK FROM DAMAGE
2. COORDINATE DEMOLITION EFFORTS WITH NEW CONSTRUCTION
3. IF SALVAGING MATERIAL, STORE SAFELY ON SITE TO AVOID DAMAGE
4. REMOVE ALL UNUSED EQUIPMENT & PLUMBING UNLESS NOTED OTHERWISE.
5. GENERAL CLEANING OF ALL DEBRIS & LOOSE ITEMS TO BE PART OF DEMOLITION IN PREPARATION OF NEW CONSTRUCTION
6. CLEAN EXISTING EXPOSED EXTERIOR & INTERIOR BRICK AND TILE WALLS OF ALL PAINT AND GRAFFITI. USE METHODS ACCEPTABLE TO DEPARTMENT OF INTERIORS STANDARDS FOR HISTORIC RENOVATION; SEE ALTERNATE FOR DESCRIPTION OF OPTIONS. NOTE BASE BID IS TO USE CHEMICAL CLEANER, BUT LIGHTER METHODS SHOULD BE EVALUATED AND CREDIT GIVEN SHOULD GENTLER MEANS BE ADEQUATE.
7. IF CONTRACTOR HAS QUESTION REGARDING DEMOLITION SCOPE OF WORK, CONTACT ARCHITECT / OWNER PRIOR TO PROCEEDING
8. SEE ELEVATIONS FOR NOTES REGARDING WINDOW REPAIR AND REMOVAL.
9. CONTRACTOR TO VISIT SITE AND FAMILIARIZE HIMSELF WITH THE CONDITIONS; INCLUDE REMOVAL OF ALL ITEMS REQUIRED TO DO THE WORK
10. AT CONCRETE COLUMNS, PREPARE SURFACE FOR PAINTING FOLLOWING HAZARDOUS MATERIAL ABATEMENT; MUST OBTAIN APPROVAL PRIOR TO PROCEEDING.
11. AT WOOD BEAMS, COLUMNS, AND JOISTS, CLEAN WOOD, ASSOCIATED METAL STRAPPING, AND PREPARE FOR NEW PAINTED FINISH FOLLOWING HAZARDOUS MATERIAL ABATEMENT AS INDICATED IN HAZARDOUS MATERIAL REPORT.
12. AT ALL EXISTING PORTIONS TO REMAIN, REMOVE MOLD, MILDEW, ALGAE THROUGHOUT PRIOR TO CONSTRUCTING NEW WORK.
13. AT EXISTING DAMAGED WOOD FLOOR OPENINGS UP TO 8" X 8" - (VISIBLE FROM UNDERSIDE) PROVIDE SHEET METAL PLATE SET IN SEALANT PRIOR TO POURING; ANYTHING LARGER PROVIDE REPLACEMENT DECKING

**HGB**

PAK PROPERTIES



Superior

2103 Wabash Avenue  
Saint Paul, MN 55114

URBANWORKS

© URBANWORKS ARCHITECTURE LLC, 2017  
901 NORTH THIRD STREET, SUITE 145, MINNEAPOLIS, MN 55401

CONSULTANT

NOT FOR  
CONSTRUCTION

PRICING SET  
03.21.2018

REVISIONS

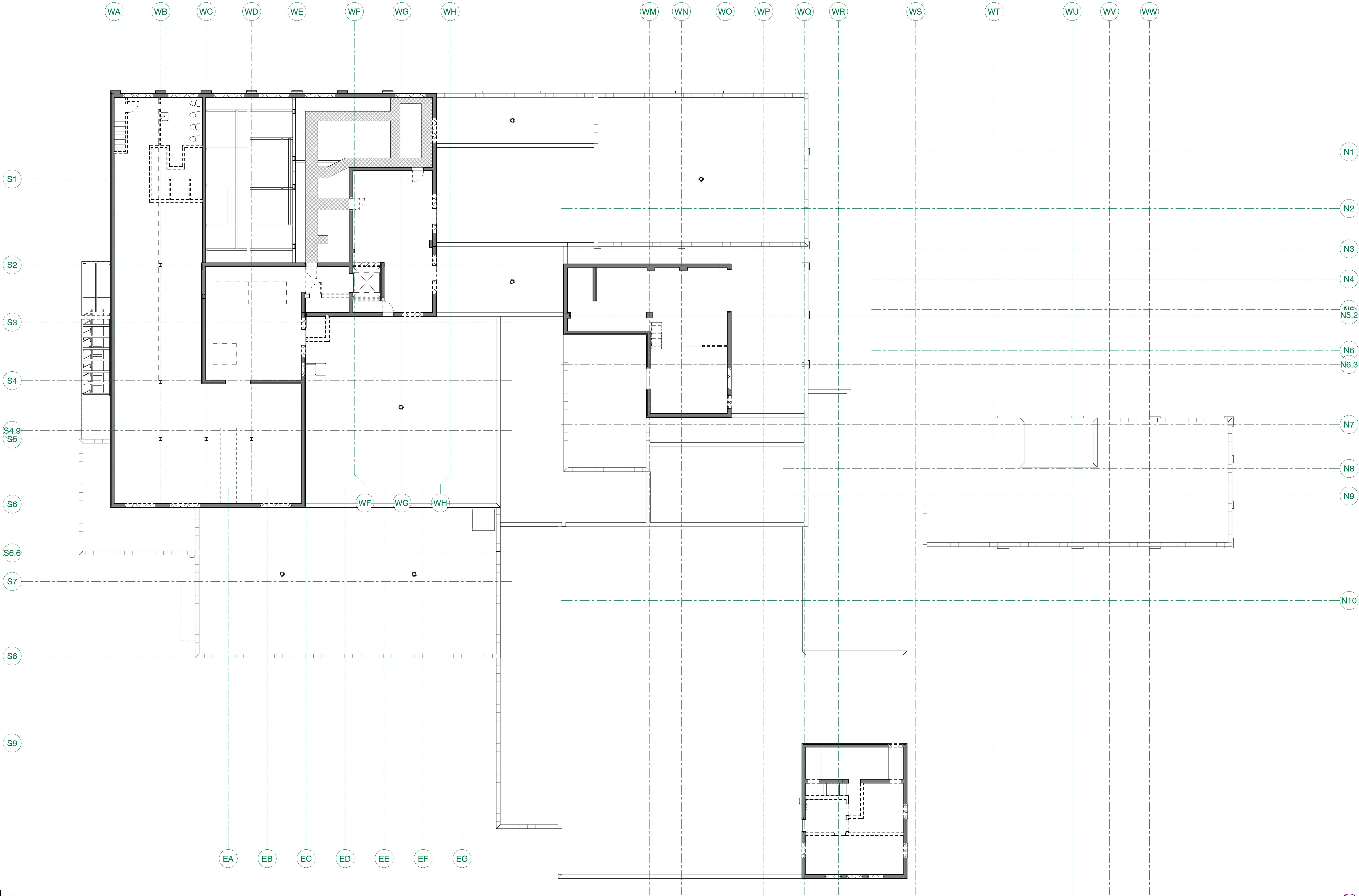
DATE  
PROJECT #  
PHASE  
DRAWN BY  
CHECKED BY

2/6/2018  
16-0023  
SD  
Author  
Checker

LEVEL 2 DEMO  
PLAN - OVERALL

D102

3/2/2018 12:45 PM C:\In\ext Project Files\16-0023 A18 Central\_Jeppanen@urban-works.com.rvt



**1** LEVEL 3 - DEMO PLAN  
D103 1" = 10'-0"

### DEMOLITION KEYNOTES

- D01 REMOVE EXISTING MASONRY TO HISTORIC OPENING. PREPARE FOR INSTALLATION OF NEW WINDOW  
D02 REMOVE DOOR AND FRAME TO HISTORIC OPENING. PREPARE FOR INSTALLATION OF NEW DOOR  
D03 CREATE NEW OPENING IN EXISTING MASONRY FOR NEW WINDOW / DOOR  
D04 REMOVE EXISTING MASONRY / WINDOW TO HISTORIC OPENING. PREPARE FOR NEW WINDOW  
D05 REMOVE OVERHEAD GARAGE DOOR  
D06 REMOVE INFILL PANEL FOR NEW WINDOW  
D07 REMOVE CORNER GUARD, REPAIR BRICK AS NEEDED  
D08 REMOVE VINES ON BRICK MASONRY  
D09 REMOVE LIGHT FIXTURE  
D10 REMOVE DOWNSPOUT  
D11 REMOVE SIGNAGE AND / OR AWNING  
D12 REMOVE BLOCK STRUCTURE, REMOVE ALL MATERIALS FROM BRICK MASONRY WALL BEYOND, PREPARE FOR TUCK POINT  
D15 REMOVE BLOCK STRUCTURE, REMOVE ALL MATERIALS FROM BRICK MASONRY WALL BEYOND, PREPARE FOR TUCK POINT  
D16 REMOVE LOADING DOCK HOOD AND PADS

- D17 REMOVE DOOR AND FRAME  
D19 REMOVE EXISTING WINDOW. INSTALL NEW WINDOW TO MATCH HISTORIC OPENING  
D20 REMOVE MASONRY INFILL. PREPARE ROUGH OPENING FOR NEW MASONRY TO MATCH  
D21 REMOVE CLADDING, STRUCTURE TO REMAIN  
D22 REMOVE EXISTING WOODEN PLANTER  
D23 REMOVE EXISTING MASONRY TO HISTORIC OPENING. PREPARE FOR INSTALLATION OF NEW INFILL WALL  
D24 REMOVE DOOR AND FRAME TO HISTORIC OPENING. PREPARE FOR INSTALLATION OF NEW INFILL WALL  
D26 REMOVE EXISTING DOWNSPOUT  
D27 REMOVE EXISTING PLYWOOD OVER WINDOW. INSTALL NEW WINDOW TO RESTORE LIGHT MONITOR

### GENERAL DEMOLITION NOTES:

1. PROTECT ADJACENT AREAS OF DEMOLITION WORK FROM DAMAGE
2. COORDINATE DEMOLITION EFFORTS WITH NEW CONSTRUCTION
3. IF SALVAGING MATERIAL, STORE SAFELY ON SITE TO AVOID DAMAGE
4. REMOVE ALL UNUSED EQUIPMENT & PLUMBING UNLESS NOTED OTHERWISE.
5. GENERAL CLEANING OF ALL DEBRIS & LOOSE ITEMS TO BE PART OF DEMOLITION IN PREPARATION OF NEW CONSTRUCTION.
6. CLEAN EXISTING EXPOSED EXTERIOR & INTERIOR BRICK AND TILE WALLS OF ALL PAINT AND GRAFFITI. USE METHODS ACCEPTABLE TO DEPARTMENT OF INTERIORS STANDARDS FOR HISTORIC RENOVATION; SEE ALTERNATE FOR DESCRIPTION OF OPTIONS. NOTE BASE BID IS TO USE CHEMICAL CLEANER, BUT LIGHTER METHODS SHOULD BE EVALUATED AND CREDIT GIVEN SHOULD GENTLER MEANS BE ADEQUATE.
7. IF CONTRACTOR HAS QUESTION REGARDING DEMOLITION SCOPE OF WORK, CONTACT ARCHITECT / OWNER PRIOR TO PROCEEDING
8. SEE ELEVATIONS FOR NOTES REGARDING WINDOW REPAIR AND REMOVAL.
9. CONTRACTOR TO VISIT SITE AND FAMILIARIZE HIMSELF WITH THE CONDITIONS; INCLUDE REMOVAL OF ALL ITEMS REQUIRED TO DO THE WORK
10. AT CONCRETE COLUMNS, PREPARE SURFACE FOR PAINTING FOLLOWING HAZARDOUS MATERIAL ABATEMENT; MUST OBTAIN APPROVAL PRIOR TO PROCEEDING.
11. AT WOOD BEAMS, COLUMNS, AND JOISTS, CLEAN WOOD, ASSOCIATED METAL STRAPPING, AND PREPARE FOR NEW PAINTED FINISH FOLLOWING HAZARDOUS MATERIAL ABATEMENT AS INDICATED IN HAZARDOUS MATERIAL REPORT.
12. AT ALL EXISTING PORTIONS TO REMAIN, REMOVE MOLD, MILDEW, ALGAE THROUGHOUT PRIOR TO CONSTRUCTING NEW WORK.
13. AT EXISTING DAMAGED WOOD FLOOR OPENINGS UP TO 8" X 8" - (VISIBLE FROM UNDERSIDE) PROVIDE SHEET METAL PLATE SET IN SEALANT PRIOR TO POURING; ANYTHING LARGER PROVIDE REPLACEMENT DECKING

**HBG**

PAK PROPERTIES



Superior

2103 Wabash Avenue  
Saint Paul, MN 55114

URBANWORKS

CONSULTANT

NOT FOR  
CONSTRUCTION

PRICING SET  
03.21.2018

REVISIONS

DATE 2/6/2018  
PROJECT # 16-0023  
PHASE SD  
DRAWN BY Author  
CHECKED BY Checker

LEVEL 3 DEMO  
PLAN - OVERALL

D103