

Pima Center Sublease  
±16,938 SF Available  
\$0.95 PSF NNN

Colliers International  
2390 E Camelback Rd Ste 100  
Phoenix, AZ 85016  
[colliers.com/arizona](http://colliers.com/arizona)



MIKE KANE  
DIR +1 602 222 5013  
MOB +1 602 999 1959  
[mike.kane@colliers.com](mailto:mike.kane@colliers.com)



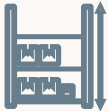
OFFICE  
±5,252 SF



WAREHOUSE  
±11,686



WAREHOUSE  
DOORS  
2 Loading 10' x 10'  
1 Grade-Level 12' x 12'



CLEAR HEIGHT  
24'

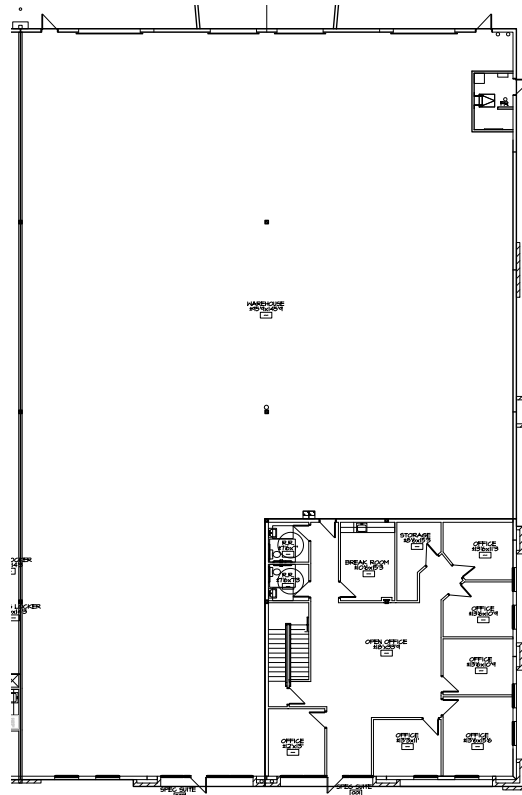


FULLY  
AIR-CONDITIONED



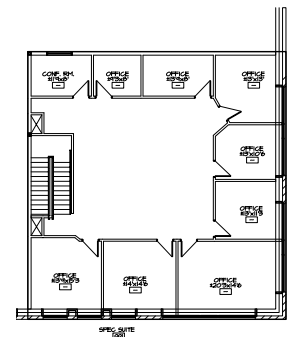
FULLY  
SPRINKLERED

8455 North 90th St  
Suite 1  
Scottsdale, AZ



First Floor Plan

±16,938 SF



Second Floor Plan

## Pima Center Sublease

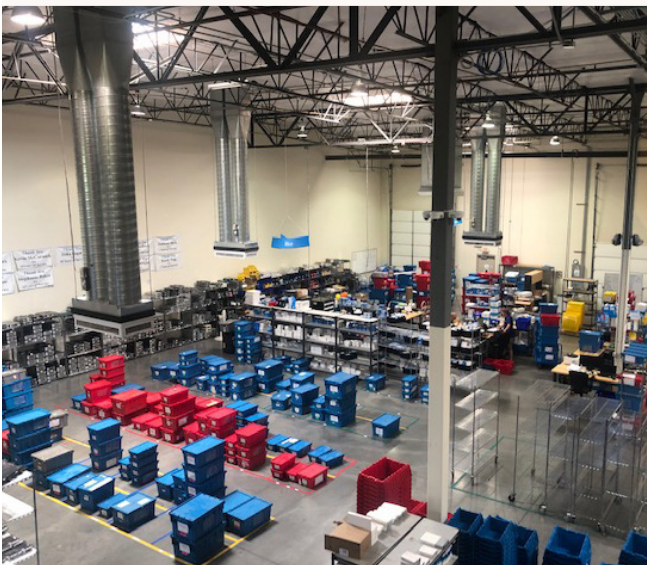
- Two full diamond interchanges along Loop 101
- Superior ingress/egress to surrounding surface streets and freeway
- Master Lease expires December 31, 2022

MIKE KANE  
DIR +1 602 222 5013  
MOB +1 602 999 1959  
mike.kane@colliers.com



# Pima Center Sublease

8455 North 90th St  
Suite 1  
Scottsdale, AZ



MIKE KANE  
DIR +1 602 222 5013  
MOB +1 602 999 1959  
mike.kane@colliers.com

Colliers International  
2390 E Camelback Rd Ste 100  
Phoenix, AZ 85016  
colliers.com/arizona

This document/email has been prepared by Colliers International for advertising and general information only. Colliers International makes no guarantees, representations or warranties of any kind, expressed or implied, regarding the information including, but not limited to, warranties of content, accuracy and reliability. Any interested party should undertake their own inquiries as to the accuracy of the information. Colliers International excludes unequivocally all inferred or implied terms, conditions and warranties arising out of this document and excludes all liability for loss and damages arising therefrom. This publication is the copyrighted property of Colliers International and/or its licensor(s). © 2019. All rights reserved.