

FOR SALE > INDUSTRIAL

815 Dinwiddie Avenue

RICHMOND, VA 23224



Property Features

- > 15,050± total SF industrial warehouse
- > 4,000± SF quonset hut
- > Situated on 0.95 acres
- > Zoned M-2
- > One (1) drive-in (10'w x 12'h) & two (2) loading docks
- > 14' -16' ceilings
- > Approximately 20 parking spaces
- > Located in the Manchester area
- > For Sale: \$950,000



AGENT: CHIP LOUTHAN, SIOR
804 591 2417
RICHMOND, VA
chip.louthan@colliers.com

COLLIERS INTERNATIONAL
7200 Glen Forest Drive, Suite 200
Richmond, VA 23226
www.colliers.com/richmond

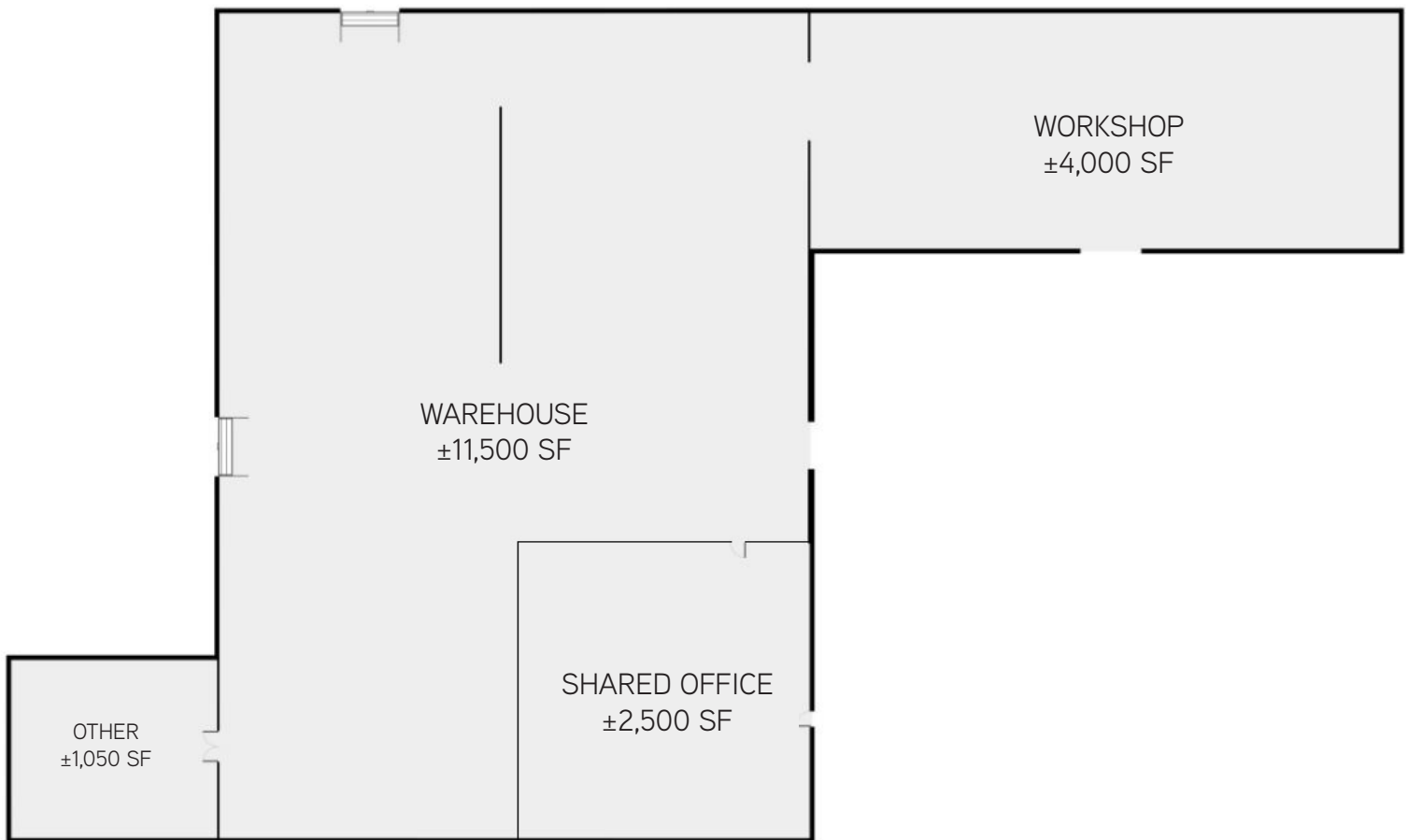
FOR SALE > INDUSTRIAL

815 Dinwiddie Avenue

RICHMOND, VA 23224



GROUND FLOOR (Drawing not to scale)



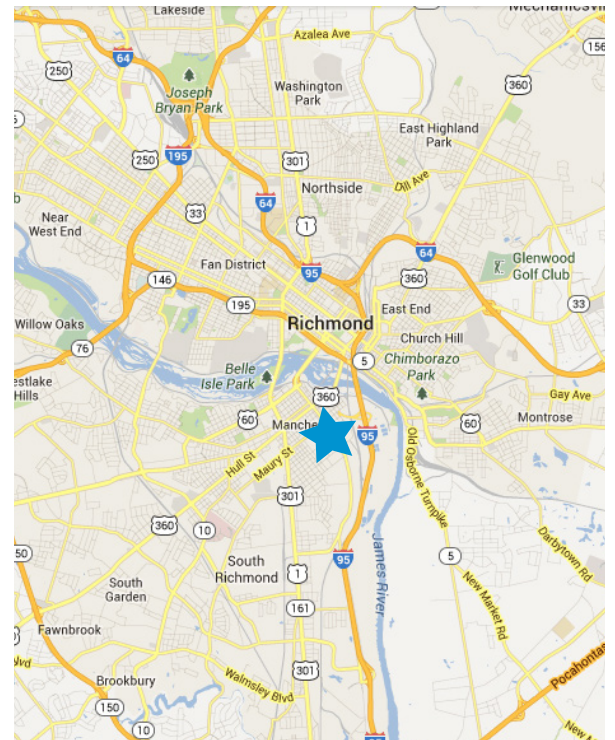
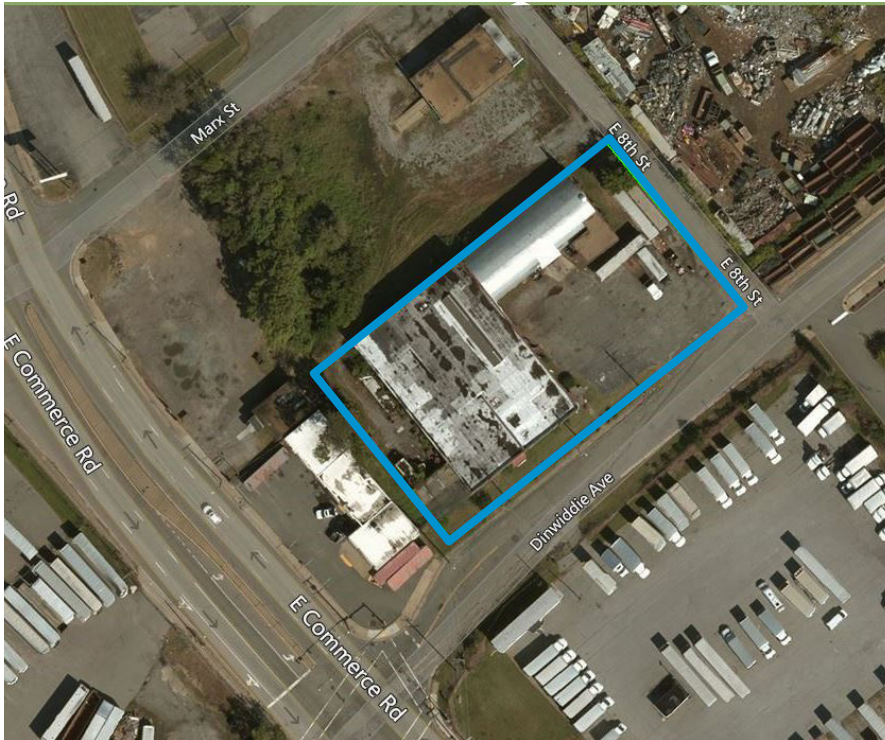
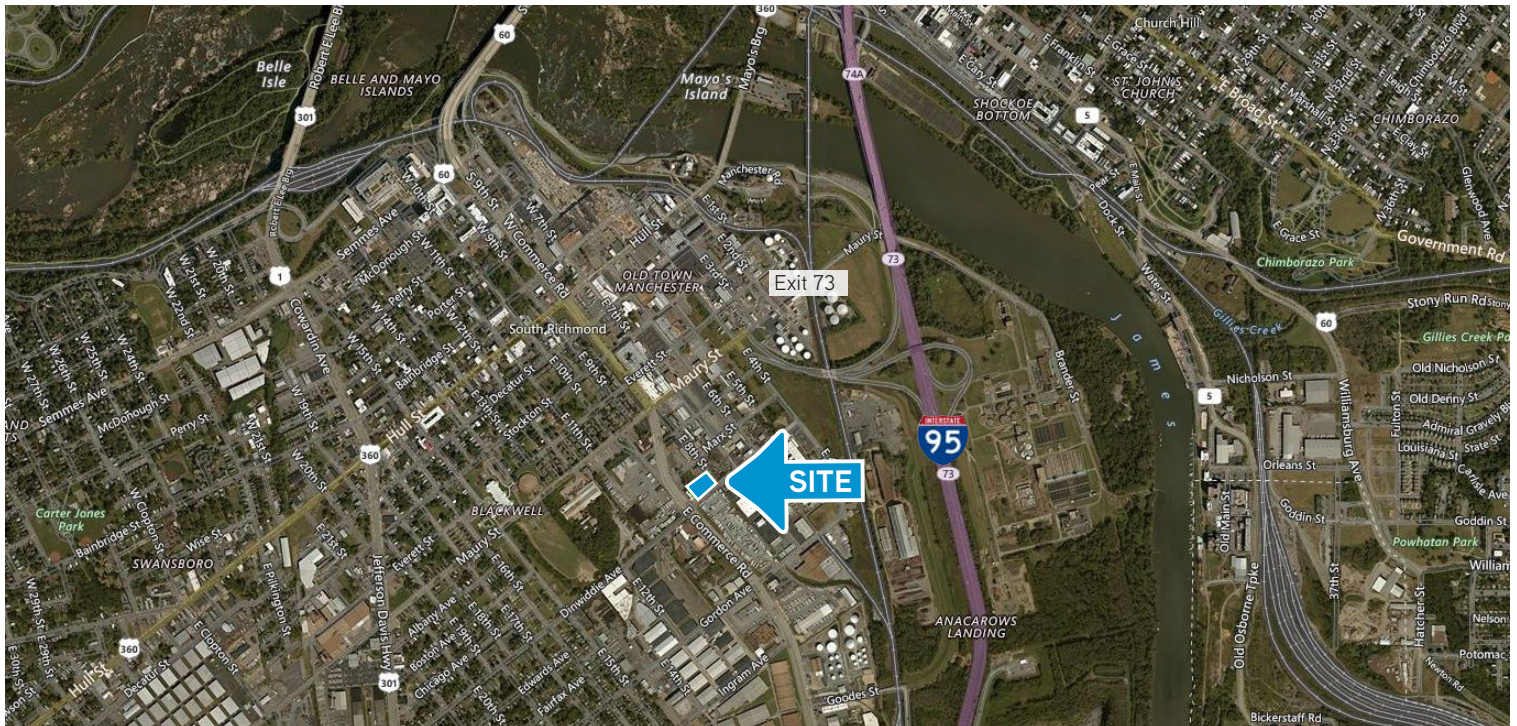
AGENT: CHIP LOUTHAN, SIOR
804 591 2417
RICHMOND, VA
chip.louthan@colliers.com

COLLIERS INTERNATIONAL
7200 Glen Forest Drive, Suite 200
Richmond, VA 23226
www.colliers.com/richmond

FOR SALE > INDUSTRIAL

815 Dinwiddie Avenue

RICHMOND, VA 23224



The information contained herein was obtained from sources, believed reliable, however, Colliers International makes no guarantees, warranties or representations as to the completeness or accuracy thereof. The presentation of this property is submitted subject to errors, omissions, change of price or conditions prior to sale or lease, or withdrawal without notice. File name:DinwiddieAve_815_Sale rev 1-12-17

COLLIERS INTERNATIONAL
7200 Glen Forest Drive, Suite 200
Richmond, VA 23226
www.colliers.com/richmond