

ATLEE STATION

Hanover County
Mechanicsville, VA 23116

FOR SALE > COMMERCIAL LAND - 1.67 ACRES

PROPERTY FEATURES

- > 1.67 acres - Chamberlayne Rd & Times Dispatch Blvd
- > Excellent access at I-295/U.S. Rt. 301 (Hanover exit)
- > Zoned M-1
- > Ideal for retail/restaurants
- > Utilities accessible at property lines:
water, sewer, gas, electricity, fiber optic and telephone
- > Frontage on Chamberlayne Road
- > **For Sale: \$1,500,000**

JOIN THESE LARGE COMPANIES



CONTACTS

SUSAN JONES

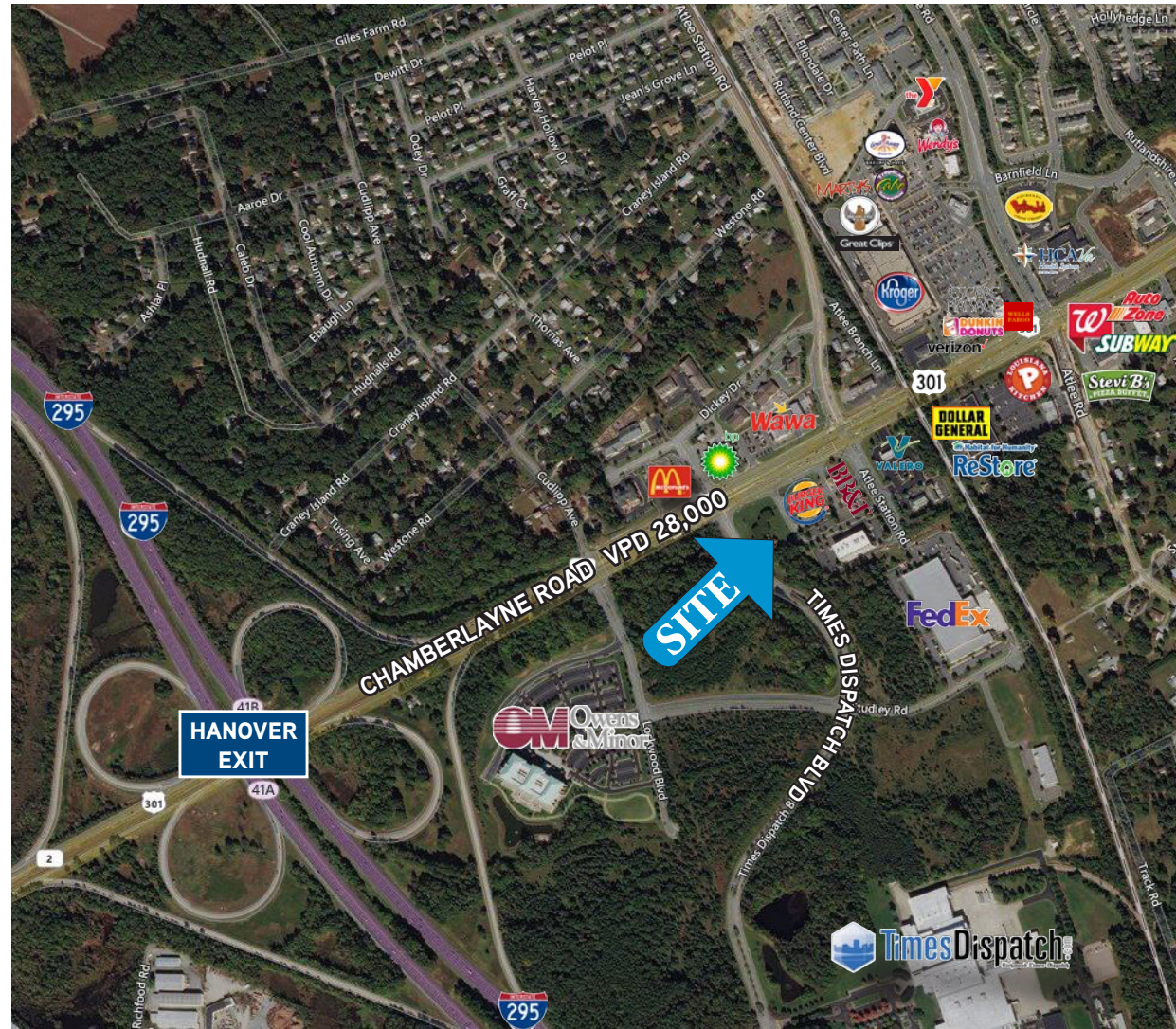
office +1 804 591 2415

susan.jones@colliers.com

KEN CAMPBELL

office +1 804 591 2437

ken.campbell@colliers.com



STATISTICAL SNAPSHOT (3 MILE)


30,350
POPULATION


\$82,282
MEDIAN HH INCOME

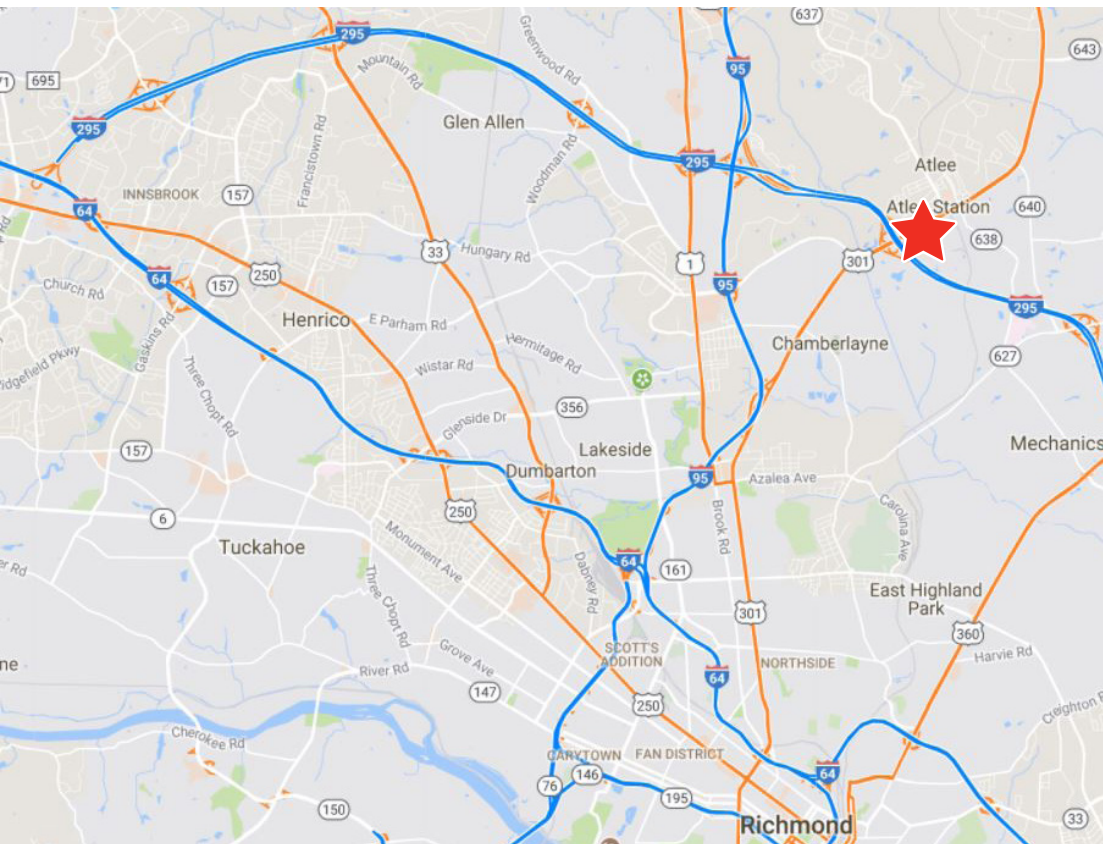

14,665
DAYTIME POPULATION



COLLIERS INTERNATIONAL
7200 Glen Forest Drive
Suite 200
Richmond, VA 23226
www.colliers.com/richmond

FOR SALE > COMMERCIAL LAND 1.67 AC

Hanover County | Mechanicsville, VA 23116



DEMOGRAPHIC FACTS	1 Mile	3 Miles	5 Miles
Population	3,740	30,350	113,857
Total Employees	4,127	14,665	54,485
Median HH Income	\$89,249	\$82,282	\$63,567

CONTACTS

SUSAN JONES
office +1 804 591 2415
susan.jones@colliers.com

KEN CAMPBELL
office +1 804 591 2437
ken.campbell@colliers.com

The information contained herein was obtained from sources, believed reliable, however, Colliers International makes no guarantees, warranties or representations as to the completeness or accuracy thereof. The presentation of this property is submitted subject to errors, omissions, change of price or conditions prior to sale or lease, or withdrawal without notice. File Name: AtleeStation_1.67AC rev 1-22-2018



Accelerating success.