

FOR LEASE

# Harbour Place Professional Park

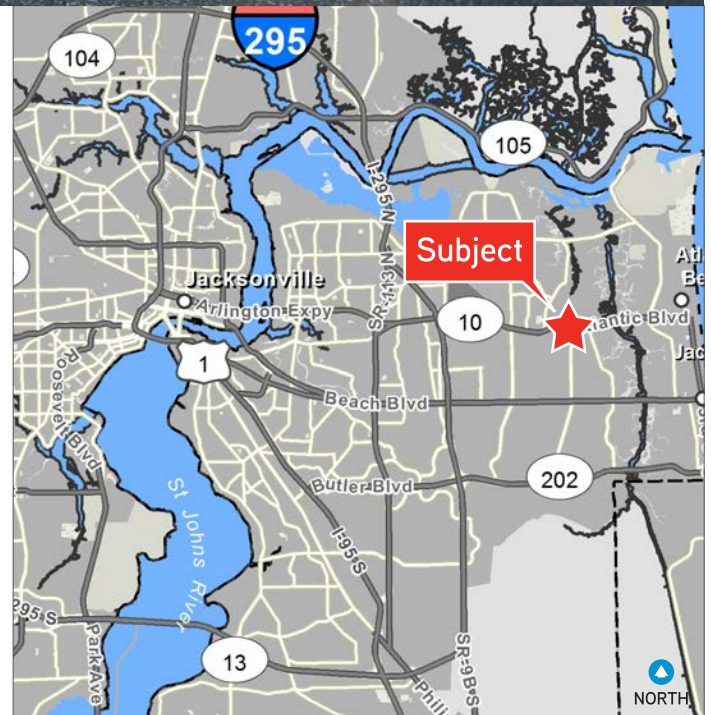
13133 Professional Dr., Suite 200  
Jacksonville, FL 32225

## Building Features

- › 1,600± SF Class A office space available
- › Located off Atlantic Blvd. near Hodges Blvd. with easy access to the beaches
- › Parking: 14 spaces
- › Zoning: PUD
- › CAM: \$4.00/SF
- › Lease rate: \$17.50/SF NNN

Demographics	1 Mile	3 Mile	5 Mile
2017 Population Estimate	13,616	76,637	180,406
2017 Est. Households	5,346	28,370	69,689
2017 Est. Avg. HH Income	\$80,520	\$91,593	\$83,554

Source: Esri Business Analyst Online



PAUL SCULL  
Senior Vice President  
+1 904 861 1120  
paul.scull@colliers.com

5400

COLLIERS INTERNATIONAL  
NORTHEAST FLORIDA  
50 N. Laura Street, Suite 1725  
Jacksonville, FL 32202  
www.colliers.com/jacksonville



FOR LEASE > OFFICE

1,600± SF Available

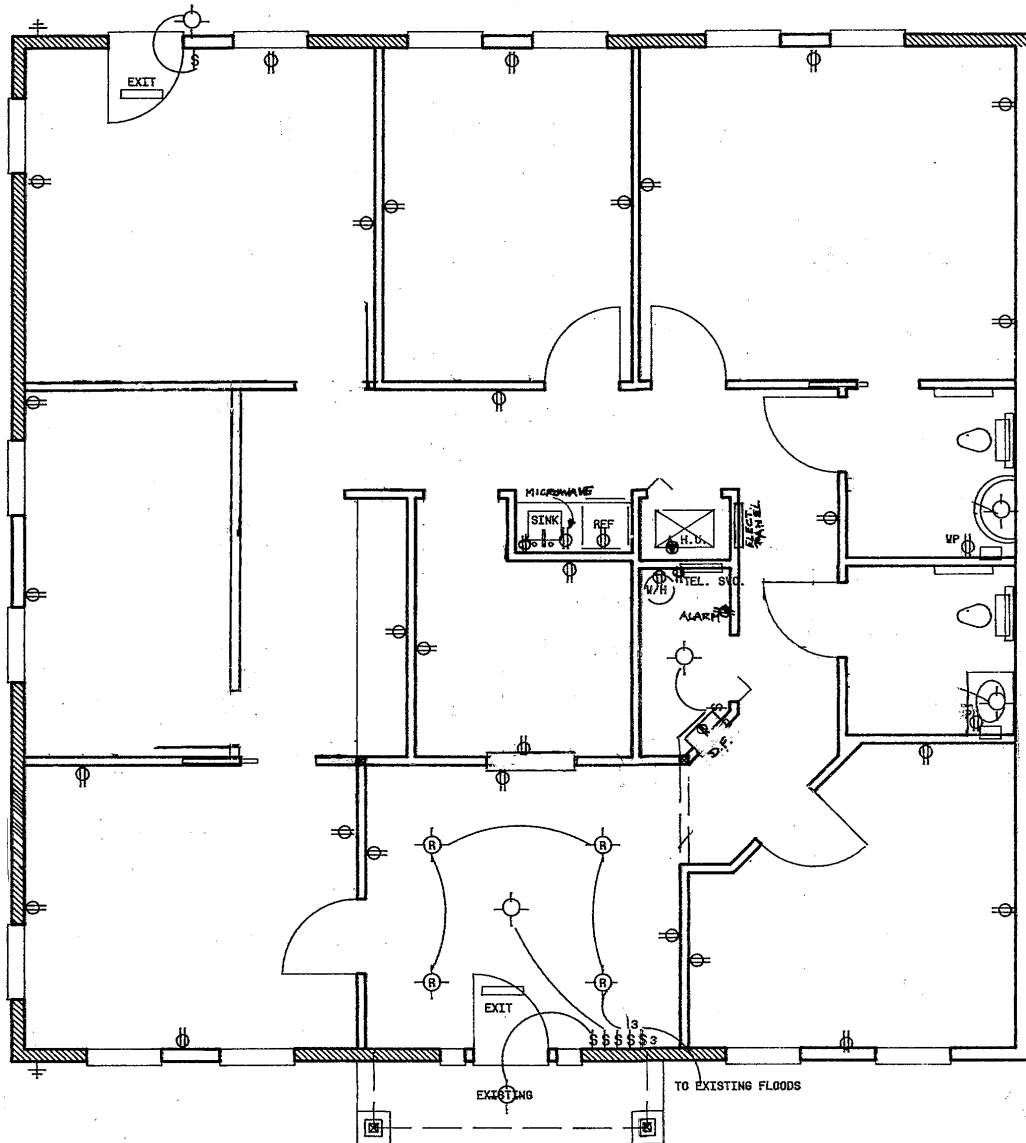
13133 PROFESSIONAL DR., SUITE 200, JACKSONVILLE, FL 32225



FOR LEASE > OFFICE

## Floor Plan

13133 PROFESSIONAL DR., SUITE 200, JACKSONVILLE, FL 32225



Contact us: PAUL SCULL  
Senior Vice President  
+1 904 861 1120  
paul.scull@colliers.com

This document has been prepared by Colliers International for advertising and general information only. Colliers International makes no guarantees, representations or warranties of any kind, expressed or implied, regarding the information including, but not limited to, warranties of content, accuracy and reliability. Any interested party should undertake their own inquiries as to the accuracy of the information. Colliers International excludes unequivocally all inferred or implied terms, conditions and warranties arising out of this document and excludes all liability for loss and damages arising there from. This publication is the copyrighted property of Colliers International and/or its licensor(s). ©2018. All rights reserved.

