

FOR SUBLEASE > INDUSTRIAL

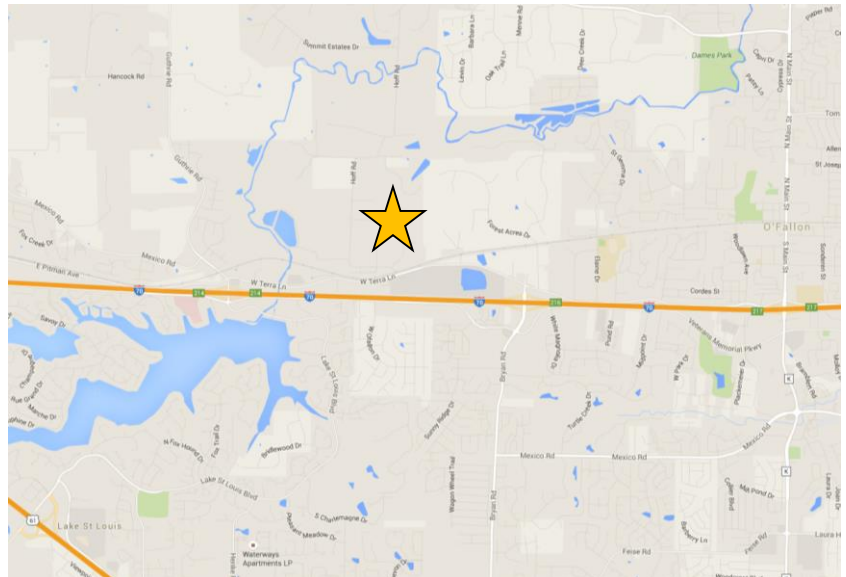
923 LONE STAR DRIVE

O'FALLON, MO 63366



Property Features

- > 54,048 SF building (5,844 SF office)
- > 7 truck-high loading doors; 5 with pit levelers, all have seals and dock locks
- > 2 drive-in doors (10' x 10' and 12' x 14')
- > 800 amps, 480 volt, 3-phase electrical service
- > 21' to 25' ceilings
- > 60 car parking spots; 10 trailer parking spots
- > 130' all concrete loading court
- > Food Grade Improvements existing
- > Fenced outside storage
- > Liner panel throughout
- > Very clean functional space
- > Expandable to 73,000 SF
- > Sublease term through August 31, 2020
- > **SUBLEASE RATE:** \$3.45/SF, NNN



Contact Us

GEOFFREY R. ORF
DIR +1 314 584 6255
MOB +1 314 503 0146
geoff.orf@colliers.com

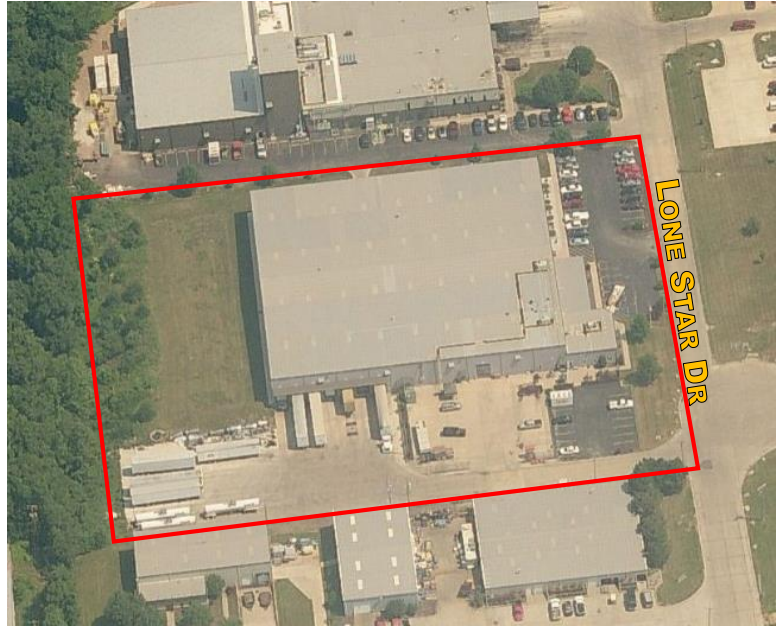
ANDREW H. PORT, SIOR
DIR +1 314 584 6254
MOB +1 314 973 0454
andy.port@colliers.com

COLLIERS | ST. LOUIS
101 South Hanley Road, Suite 1400
St. Louis, MO 63105
www.colliers.com

Although all information furnished regarding property for sale, rental or financing is from sources deemed reliable, such information has not been verified, and no express representation is made nor is any to be implied as to the accuracy thereof, and it is submitted subject to errors, omissions, change of price, rental or other conditions, prior sale, lease or financing, or withdrawal without notice.

923 LONE STAR DRIVE

O'FALLON, MO 63366



Although all information furnished regarding property for sale, rental or financing is from sources deemed reliable, such information has not been verified, and no express representation is made nor is any to be implied as to the accuracy thereof, and it is submitted subject to errors, omissions, change of price, rental or other conditions, prior sale, lease or financing, or withdrawal without notice.